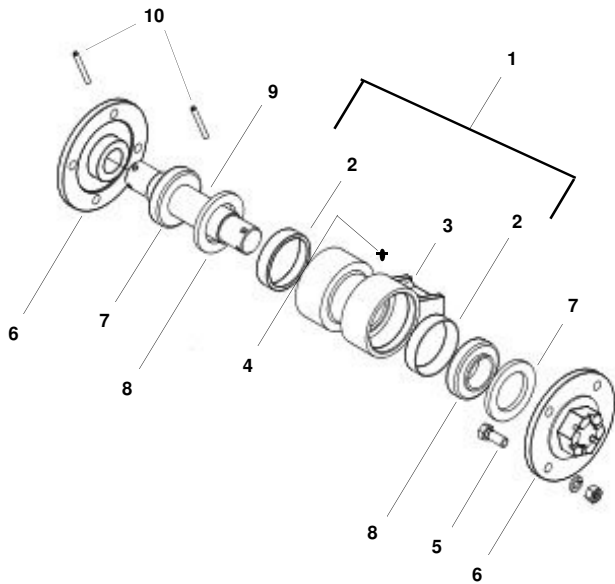


VTA (First Hub Assembly)

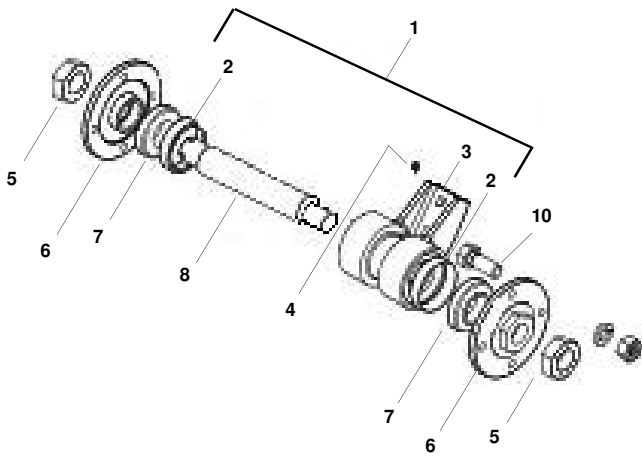
YEAR Spring 2005



ITEM	ORDER NUMBER	DESCRIPTION	YEAR	STATUS
1	235815	Hub with Cups – Front	2005	
1	239027	Hub with Cups – Rear (Shown)	2005	NA
2	12104	Cups (3.265 OD)	2005	
3	234008	Hub – Front	2005	NA
3	238621	Hub – Rear (Shown)	2005	NA
4	P88263	Grease Fitting	2005	
5	P88554	Bolt 1/2 x 1-1/4 NC 5Z	2005	
	P88303	Lock Washer 1/2	2005	
	P88104	Nut 1/2 Hex NC	2005	
6	234077	Hub, Disk Blade	2005	NA
7	P26120	Seal (CR 22563)	2005	NA
8	239032	Bearing, Cone 1-3/4 ID (Peer)	2005	NA
9	234056	Shaft	2005	NA
10	P88767	Pin Roll 1/4 DIA X 2-1/2 Z	2005	
Hub Assembly (Less Item 5)				
	P235813	Hub, Front Mounted	2005	NA
	P239028	Hub, Rear Mounted	2005	NA

VTA (Second Hub Assembly)

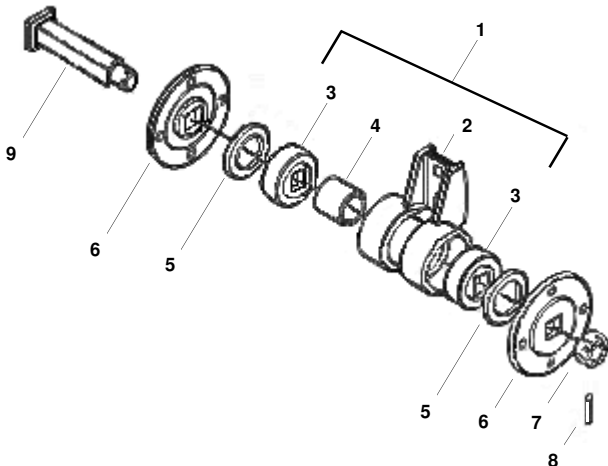
YEAR Fall 2005



ITEM	ORDER NUMBER	DESCRIPTION	YEAR	STATUS
1	235815	Hub with Cups – Front	2005	
1	239027	Hub with Cups – Rear (Shown)	2005	NA
2	12104	Cups (3.265 OD)	2005	
3	234008	Hub – Front	2005	NA
3	238621	Hub – Rear (Shown)	2005	NA
4	P88263	Grease Fitting	2005	
5	P89095	Nut, Jam 1-1/2 NF 5Z	2005	
6	234077MOD	Hub, Disk Blade	2005	
7	P26120	Seal (CR 22563)	2005	NA
8	234056	Shaft	2005	
9	239032	Bearing, Cone 1-3/4 ID (Peer)	2005	
10	P88554	Bolt 1/2 x 1-1/4 NC 5Z	2005	NA
	P88303	Lock Washer 1/2	2005	
	P88104	Nut 1/2 Hex NC	2005	
Hub Assembly (Less Item 5)				
	235813MOD	Hub, Front Mounted	2005	
	239028MOD	Hub, Rear Mounted	2005	NA

VTA (Third Hub Assembly)

YEAR 2006



ITEM	ORDER NUMBER	DESCRIPTION	YEAR	STATUS
1	P238662	Hub with Brg – Front (Shown)	2006	
1	P238661	Hub with Brg – Rear	2006	
2	P238649	Hub – Front	2006	
2	P238659	Hub – Rear (Shown)	2006	
3	P238660	Bearing, 1-1/8 Sq (W208PPB12)	2006	
4	P238646	Spacer, Bushing	2006	
5	P89428	Bushing Mach 1-1/2 x 2-1/4 18 Ga	2006	
6	P238648	Hub, Disk Blade	2006	
7	P88524	Nut, Slotted 1-1/8 NC Z	2006	
8	P88628	Pin Roll 1/4 DIA X 1-3/4 Z	2006	
9	P238644	Shaft, Sq. (Replaced by 239933)	2006	NA
	P239933	Shaft, Sq.	2006	
Hub Assembly				
	P238664	Hub, Front Mounted	2006	
	P238663	Hub, Rear Mounted	2006	