

ASSEMBLY INSTRUCTIONS

WIL-RICH 4411 CUTTER CHISEL

PRINTED IN USA (74062) JM-100 6/95

WIL-RICH
P.O. BOX 1030 WAHPETON, ND 58074
(701) 642-2621

PERSONAL SAFETY IS IMPORTANT !!

**ALL PERSONNEL INVOLVED WITH THE ASSEMBLY
AND/OR OPERATION OF THIS EQUIPMENT MUST BE**

INFORMED OF PROPER SAFETY PROCEDURES.

**OPERATOR'S AND ASSEMBLY MANUALS PROVIDE
THE NECESSARY INFORMATION.**

**IF A MANUAL IS LOST FOR A PARTICULAR IMPLEMENT,
ORDER A REPLACEMENT AT ONCE.**

**OPERATOR'S AND ASSEMBLY MANUALS ARE
AVAILABLE AT NO CHARGE UPON REQUEST.**

ADDRESS INQUIRIES TO:

HUTCHINSON WIL-RICH MANUFACTURING COMPANY

P.O. BOX 1030

WAHPETON, ND 58074

(701) 642-2621

ASSEMBLY INFORMATION

Remove all wires and arrange the parts conveniently.

NOTE: Always wear safety glasses or goggles and be careful when cutting wires and steel bands as they are under tension and will spring back when cut.

Whenever the terms "left" and "right" are used, it should be understood to mean from a position behind and facing the machine.

Lubricate all bearings and moving parts as you proceed and make sure they work freely.

Loosely install all bolts connecting mating parts before final tightening.

When tightening bolts, they should be torqued to the proper number of foot-pounds as indicated in the table unless specified. It is important that all bolts be kept tight.

On new machines, all nuts and bolts should be rechecked after a few hours of operation.

When replacing a bolt, use only a bolt of the same grade or higher. Except in shear bolt locations.

Bolts with no markings are grade 2.

Grade 5 bolts furnished with the machine are identified by three radial lines on the head.

Grade 8 bolts furnished with the machine are identified by six radial lines on the head.

All U-Bolts are grade 5.

GRADE 8



GRADE 5



GRADE 2



TORQUE IN FOOT POUNDS

BOLT DIA	3/8	1/2	5/8	3/4	7/8	1
HEX HEAD	9/16	3/4	15/16	1-1/8	1-5/16	1-1/2
UNC GRADE	2	18	45	89	160	320
	5	30	68	140	240	544
	8	40	100	196	340	792
UNF GRADE	2	21	51	102	178	368
	5	32	70	168	264	572
	8	48	112	216	368	840

CI-75623



THIS SYMBOL IS USED TO CALL YOUR ATTENTION TO INSTRUCTIONS CONCERNING YOUR PERSONAL SAFETY. BE SURE TO OBSERVE AND FOLLOW THESE INSTRUCTIONS.

CI-77637



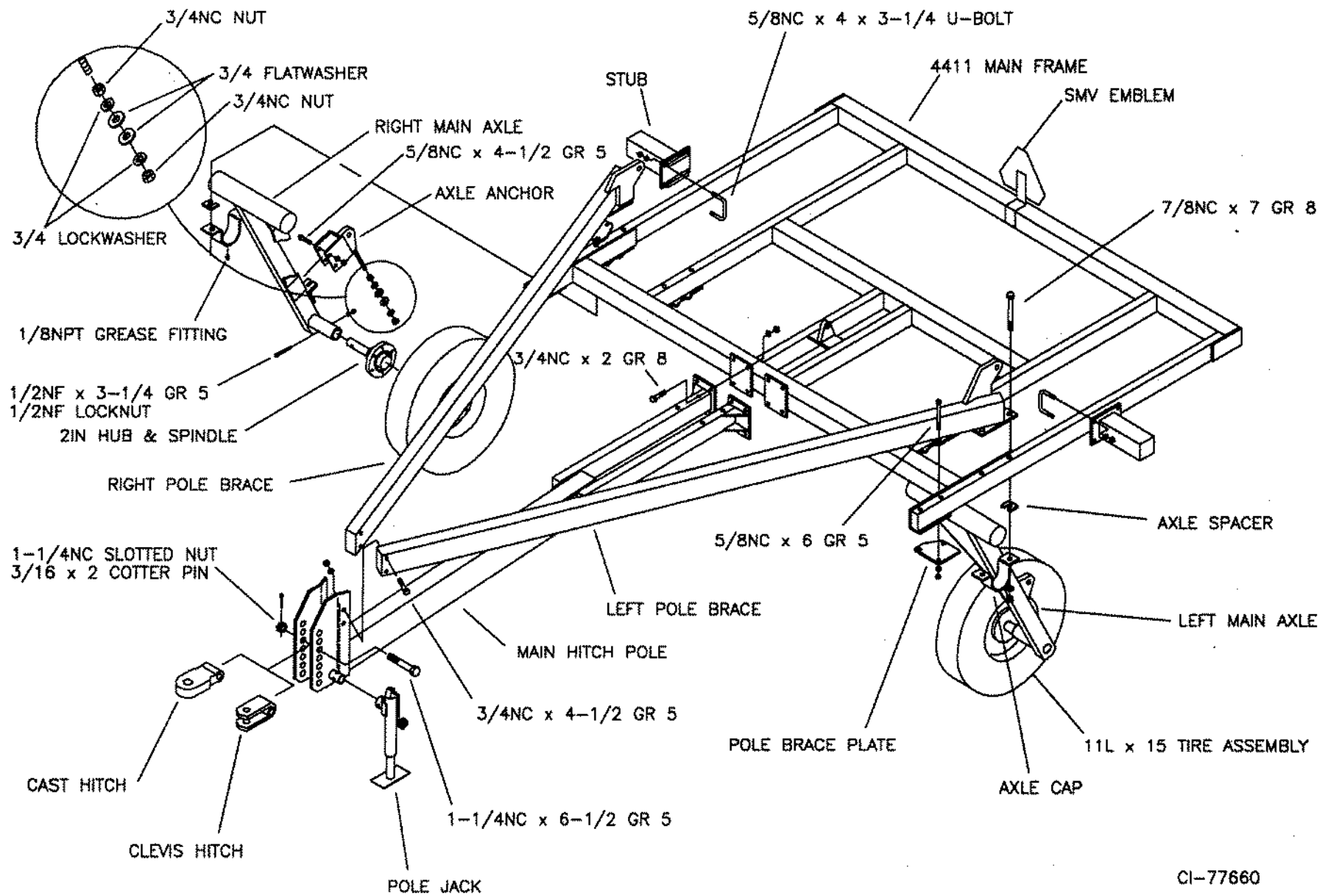
CAUTION

Read the Operator's Manual. Learn to operate this machine safely. NO RIDERS.

For road travel, use flashing lights and an SMV sign as required. Observe highway traffic regulations.

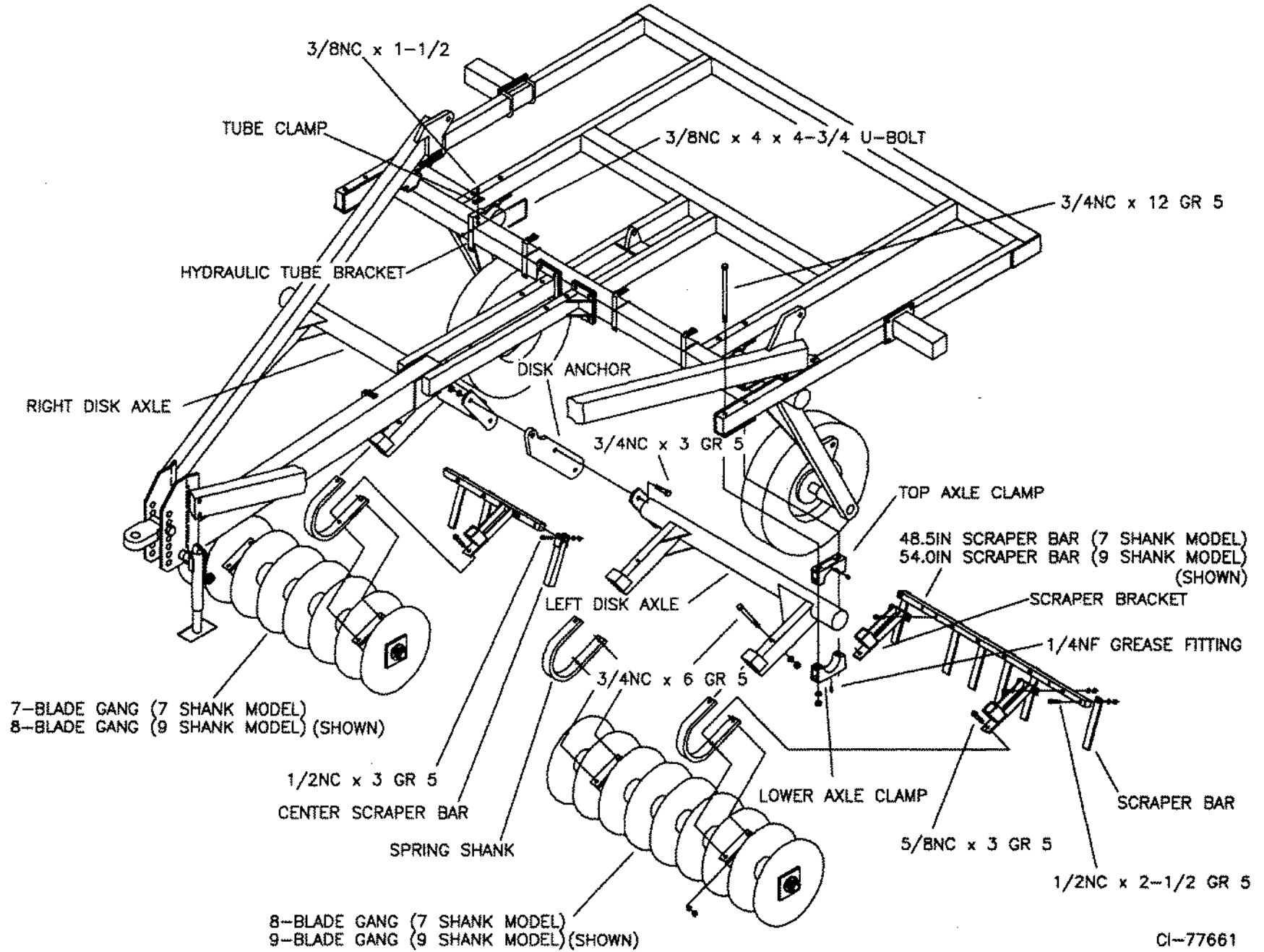
23325

7 & 7-9 SHANK MAIN FRAME



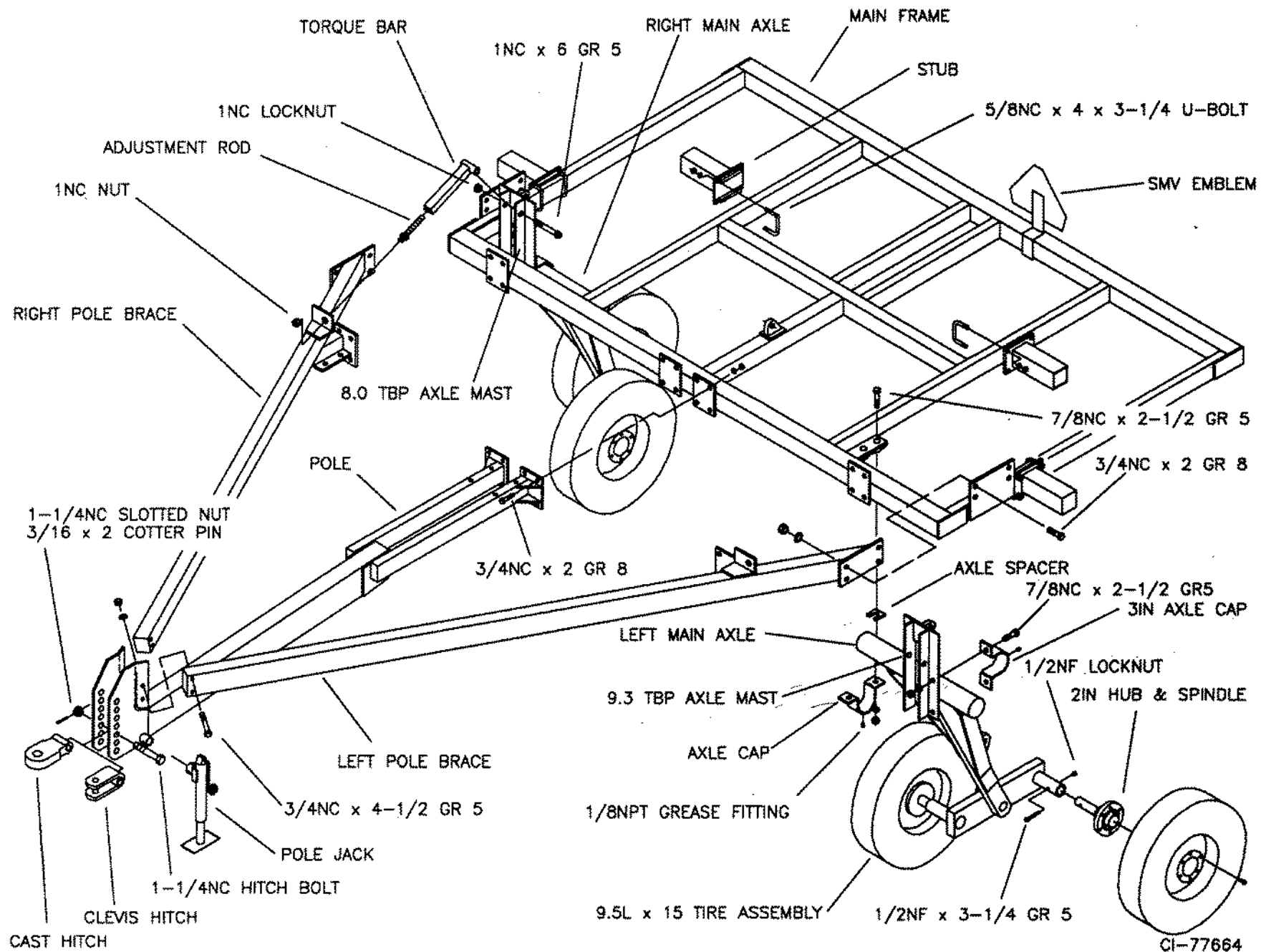
CI-77660

7 & 7-9 SHANK GANG INSTALLATION

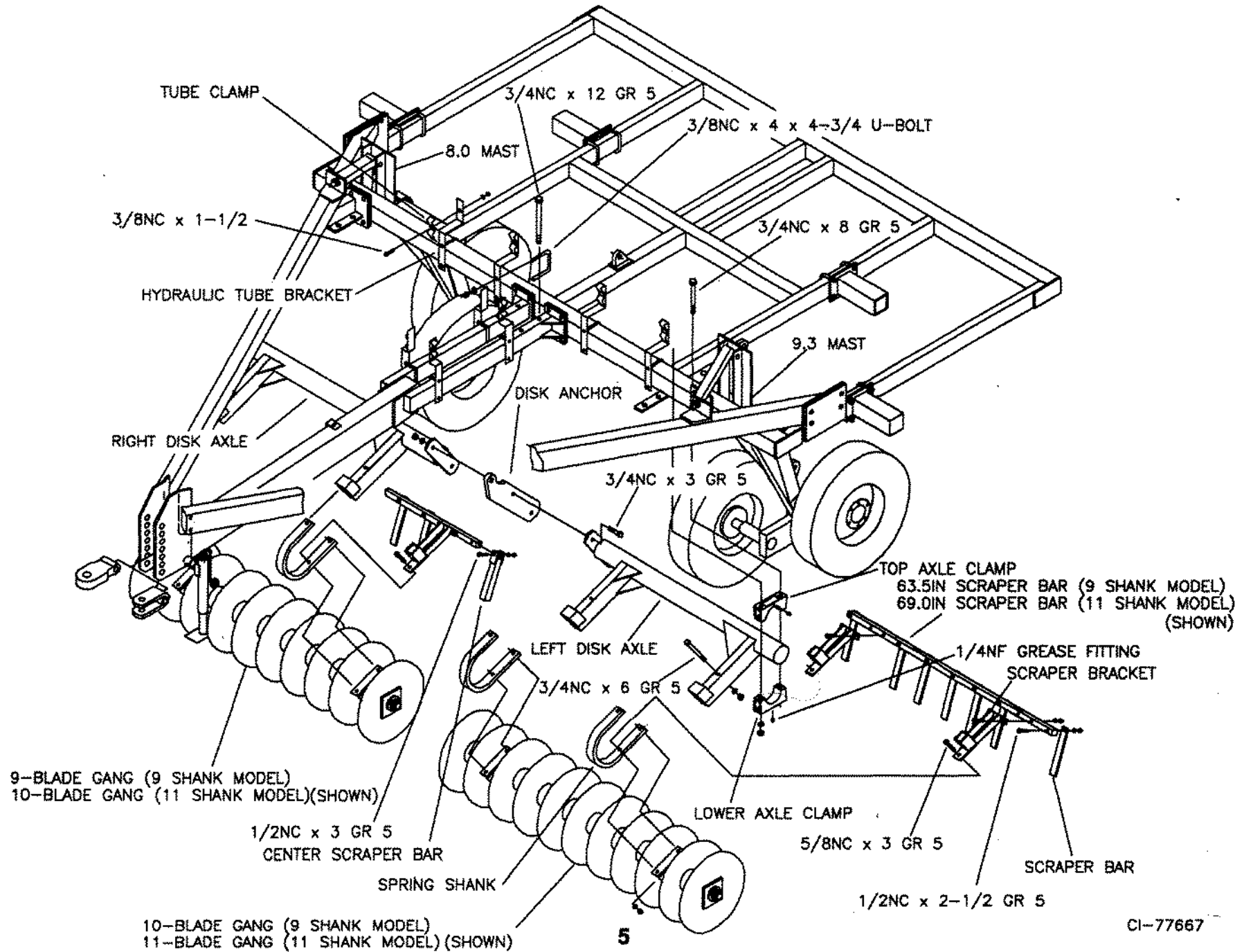


CI-77661

9 & 9-11 SHANK MAIN FRAME

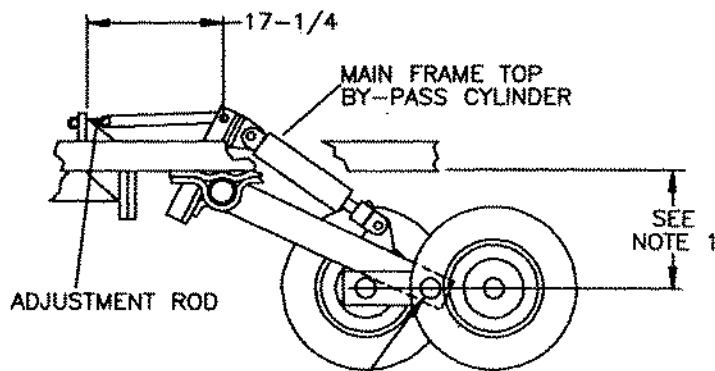


9 & 9-11 SHANK GANG INSTALLATION



MAIN AXLE ADJUSTMENT

1. To set the left and right main axles the same, fully extend the main frame cylinders and hold hydraulically. From a common point on each side of the main frame, measure down to the center pivot.
2. On 9-11 units lengthen or shorten the adjustment rods until the left and right axles measure the same. On 7-9 units lengthen or shorten the adjustment rod on the right axle until left and right axles measure the same.
3. Use the 17-1/4 locating dimension as a guide to start from on the 9-11. (See Fig. 1) Use the 1-3/4 locating dimension as a guide to start from on the 7-9. (See Fig. 2)



WALKING TANDEM CENTER PIVOT
Fig. 1 9-11 Main Axle
CI-77665

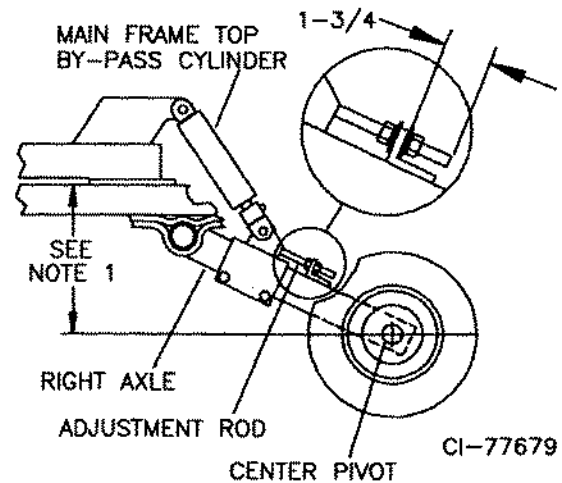


Fig. 2 7-9 Main Axle
CI-77679

SHANK INSTALLATION

3/4NC x 2 GR 8

NOTE: TIGHTEN BOLT SEVENLY, TOP AND BOTTOM GAP IN MOUNTING PLATE SHOULD BE EQUAL.

SHANK MOUNTING PLATE

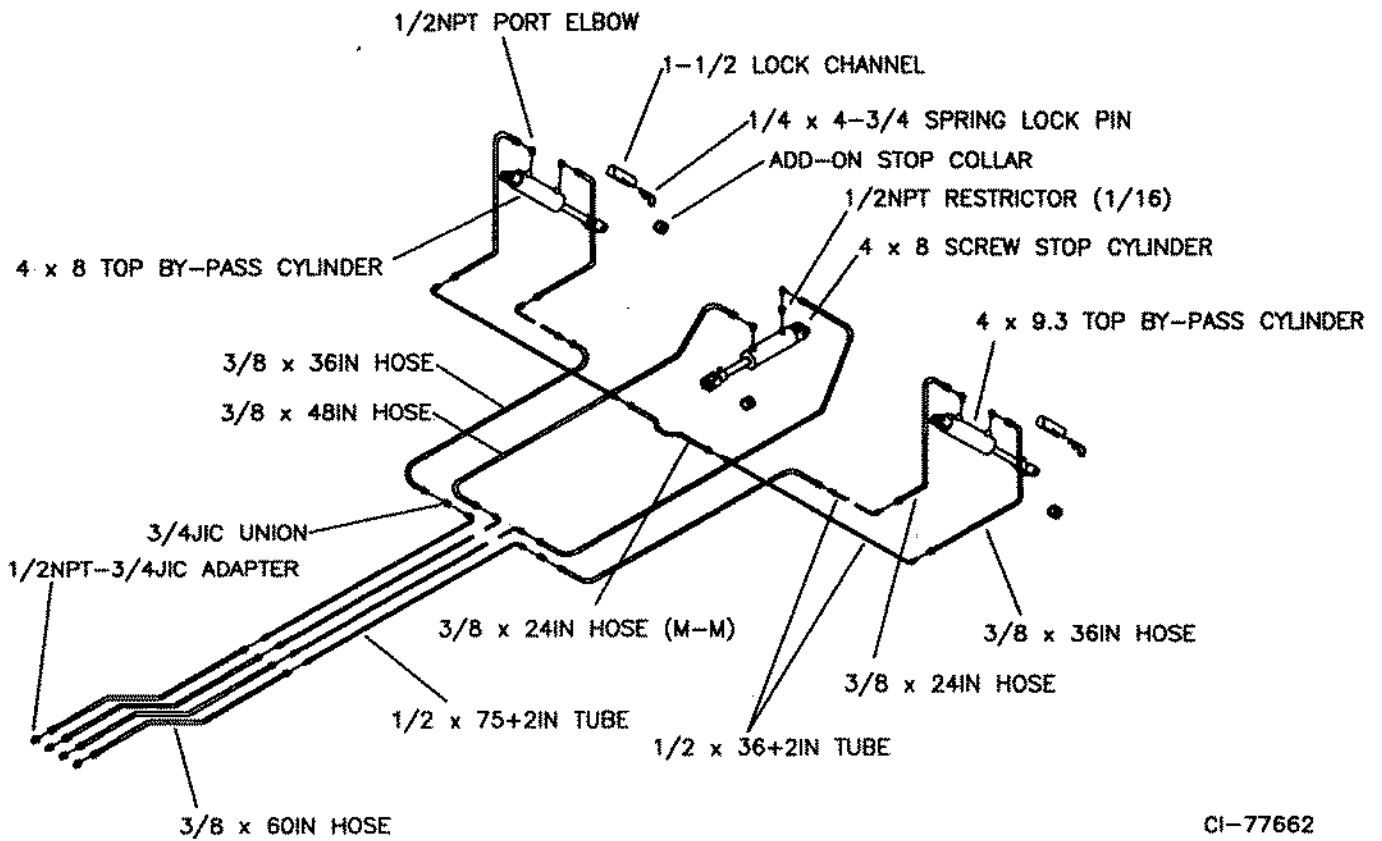
NOTE: TO ALLOW FOR TRIPPING THE SHANK ASSEMBLY MUST HAVE A MINIMUM OF 5-1/2 INCHES OF SIDE CLEARANCE MEASURED FROM THE CENTER OF THE SHANK ASSEMBLY.

5-1/2 MINIMUM

CI-77666

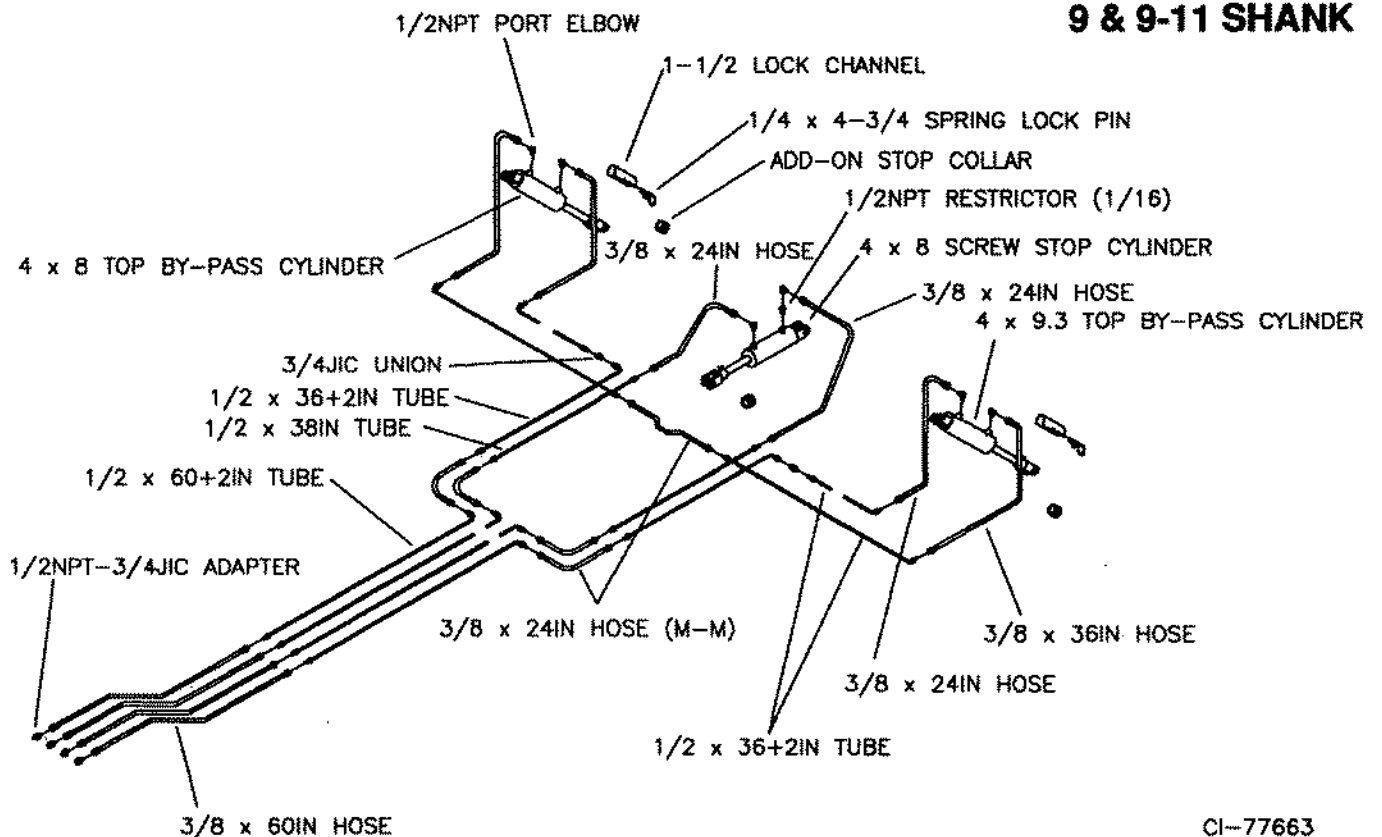
HYDRAULICS

7 & 7-9 SHANK



CI-77662

9 & 9-11 SHANK

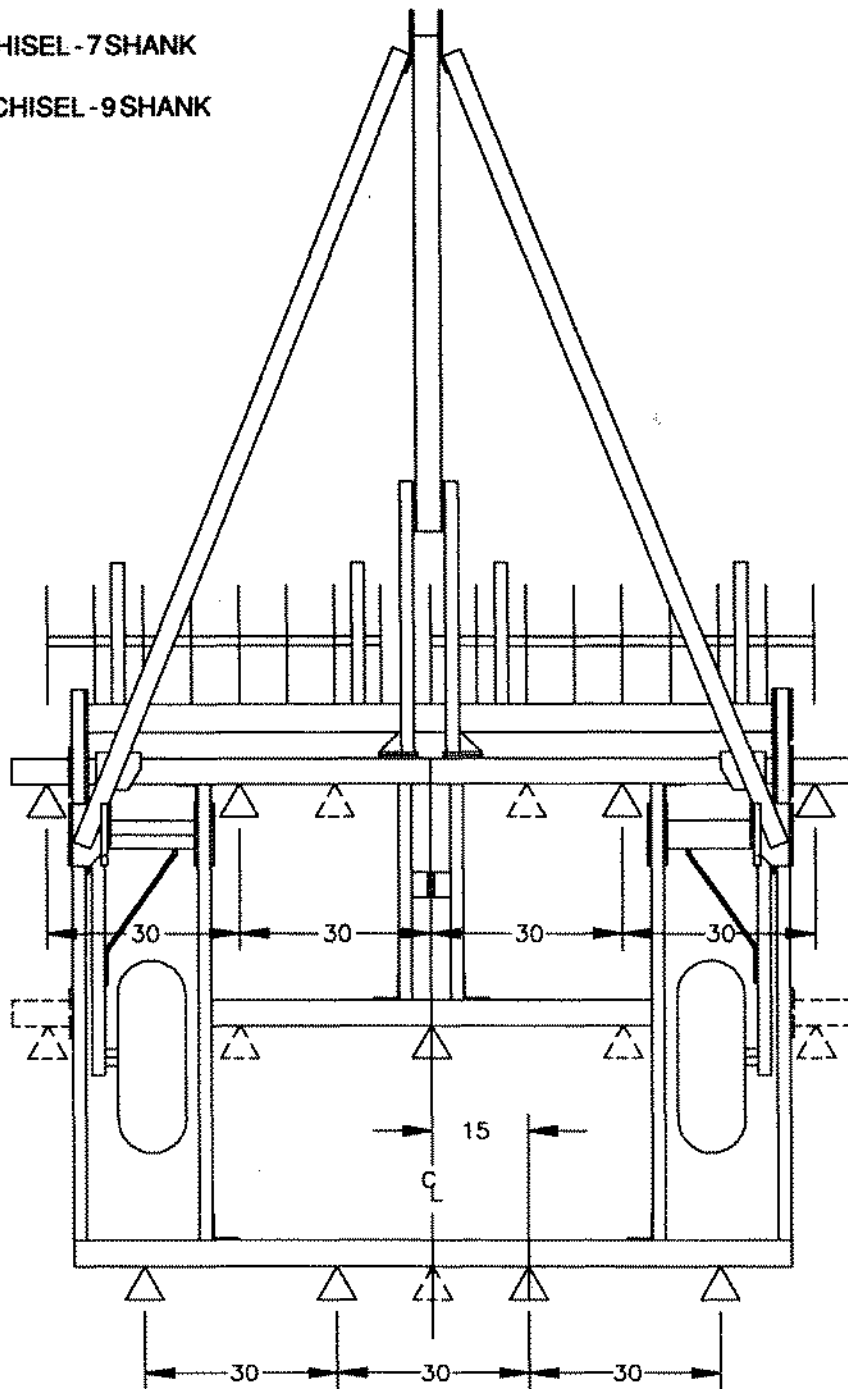


CI-77663

SHANK PLACEMENTS

9FT CUTTER CHISEL - 7 SHANK

11FT CUTTER CHISEL - 9 SHANK



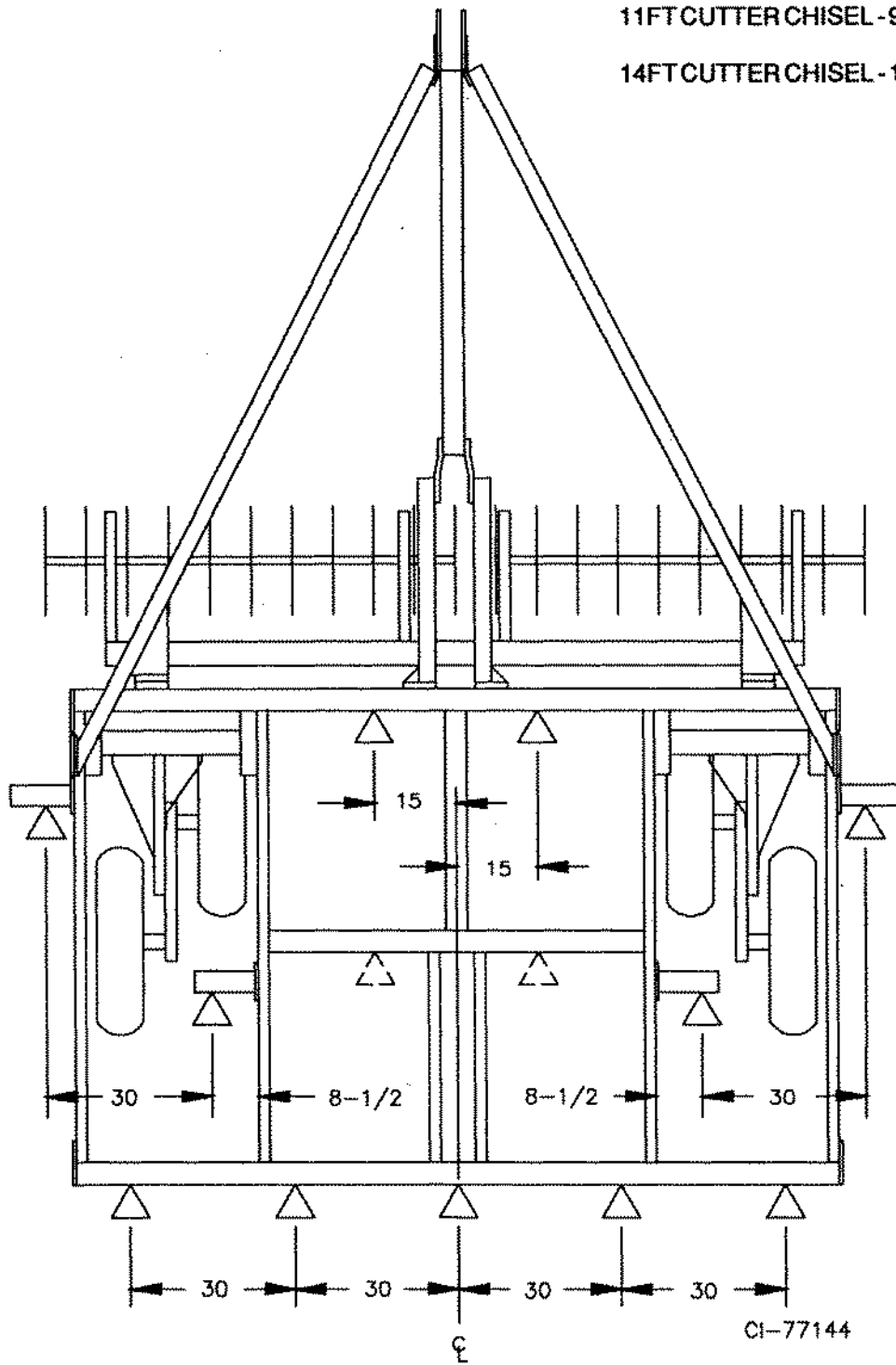
- △ - STANDARD SHANK LOCATION
- △△ - ALTERNATE SHANK LOCATION

CI-77668

SHANK PLACEMENTS

11FT CUTTER CHISEL - 9 SHANK

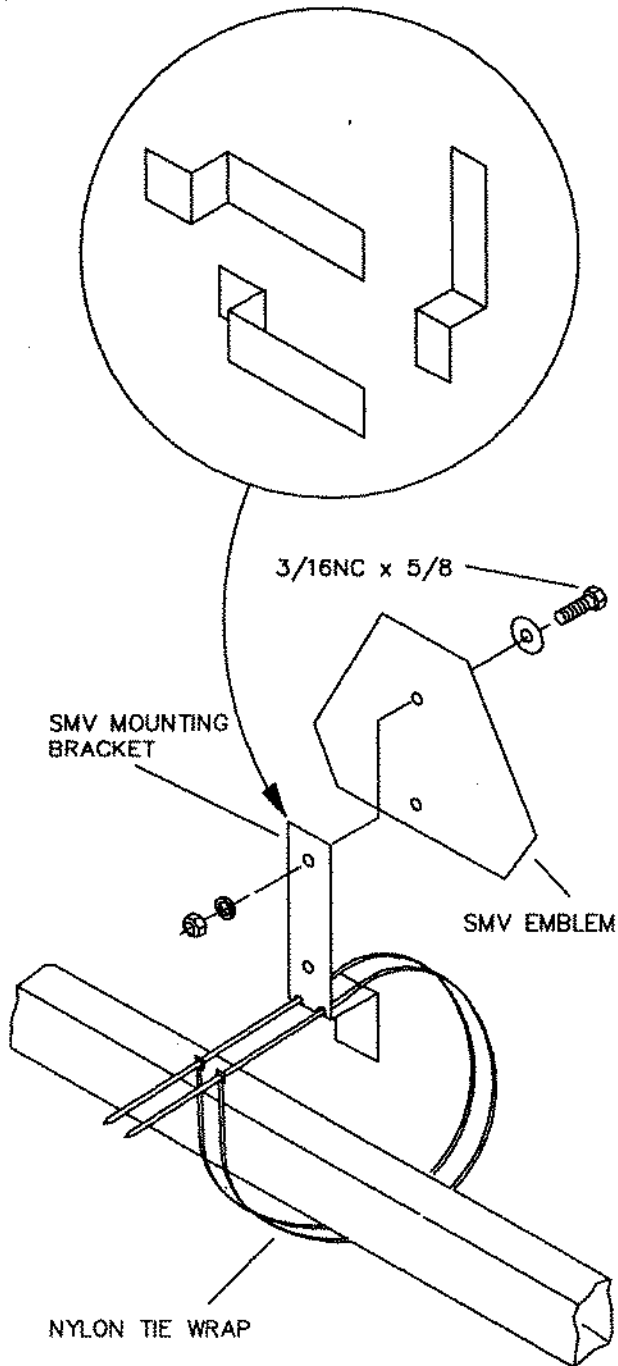
14FT CUTTER CHISEL - 11 SHANK



△ — STANDARD SHANK LOCATION

△ — ALTERNATE SHANK LOCATION

SAFETY



CI-77643

The bracket provided is designed to mount to numerous frame sizes and be orientated in numerous positions to avoid interference with implement components.

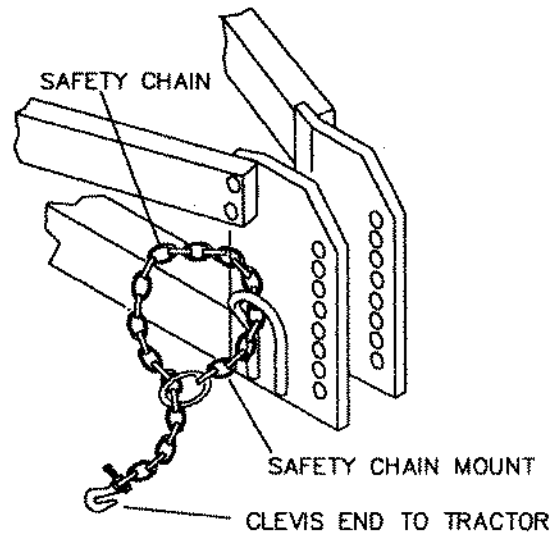
The SMV emblem is to be secured as near to the rear and centered, or as near to the left of center of the implement as practicable.

Emblem is to be 2 to 6 feet above the ground measured from the lower edge of the emblem.

Keep safety decals clean. Replace any safety decals that are damaged, destroyed, missing, painted over or can no longer be read. Replacement safety decals are available through your dealer.

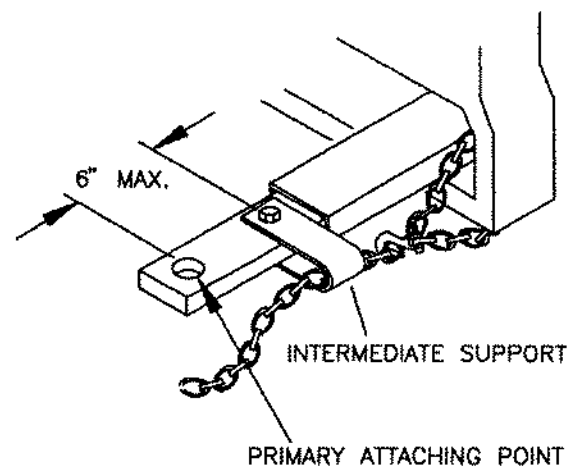
The purpose of the safety chain is to provide an auxiliary attaching system to retain the connection between towing and towed machine in the event of separation of the primary attaching system.

The safety chain should be hooked long enough to permit full turns. Unnecessary slack should be taken up.



The intermediate support is to be used if there is more than 6" of unsupported chain on either side of the primary attaching point.

The intermediate support should not be mounted more than 6" from the primary attaching point. (See figure below.)



CI-77669

