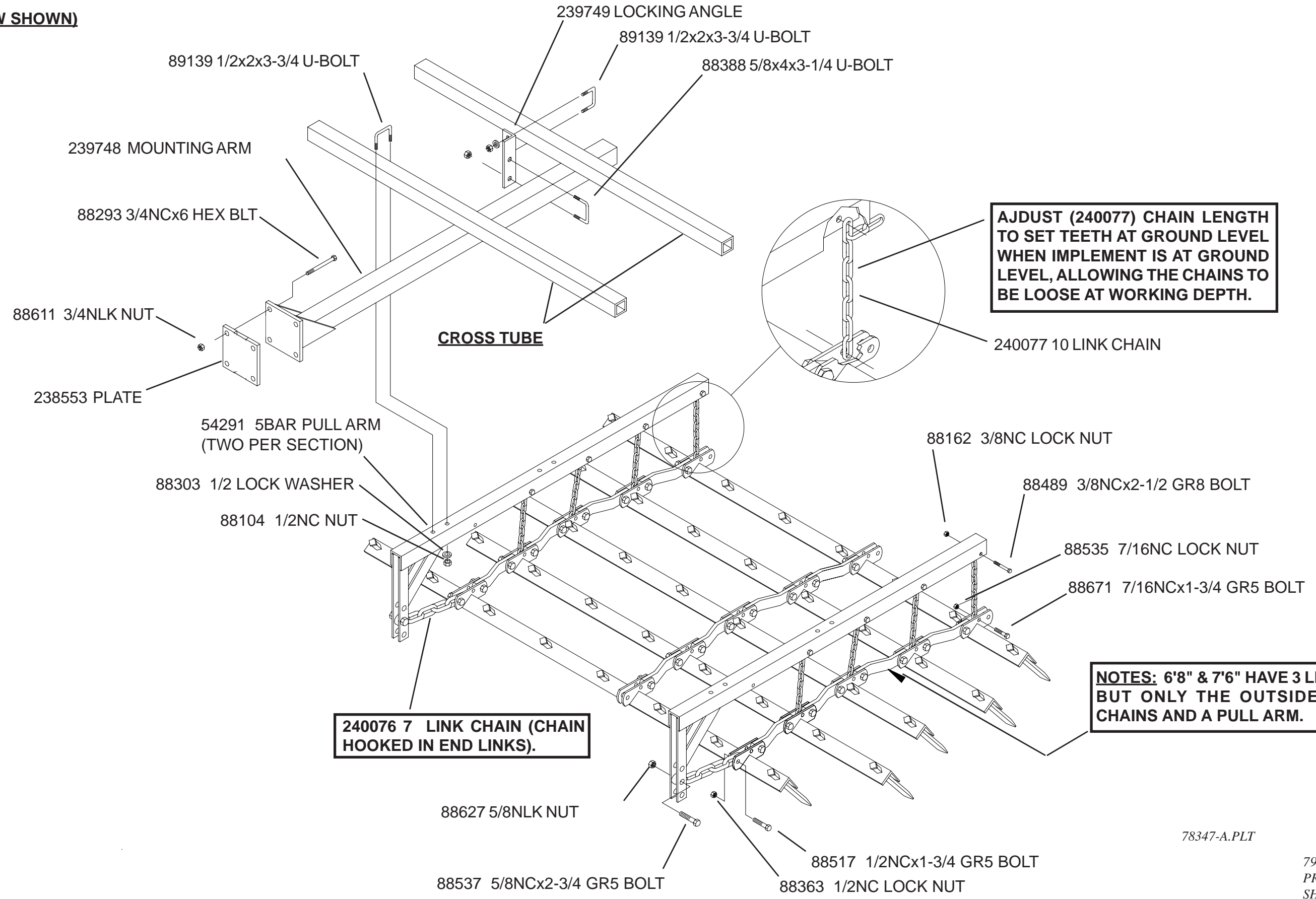


SOILPRO 513 SPIKE TOOTH HARROW ASSY INSTRUCTIONS

(6'8" HARROW SHOWN)

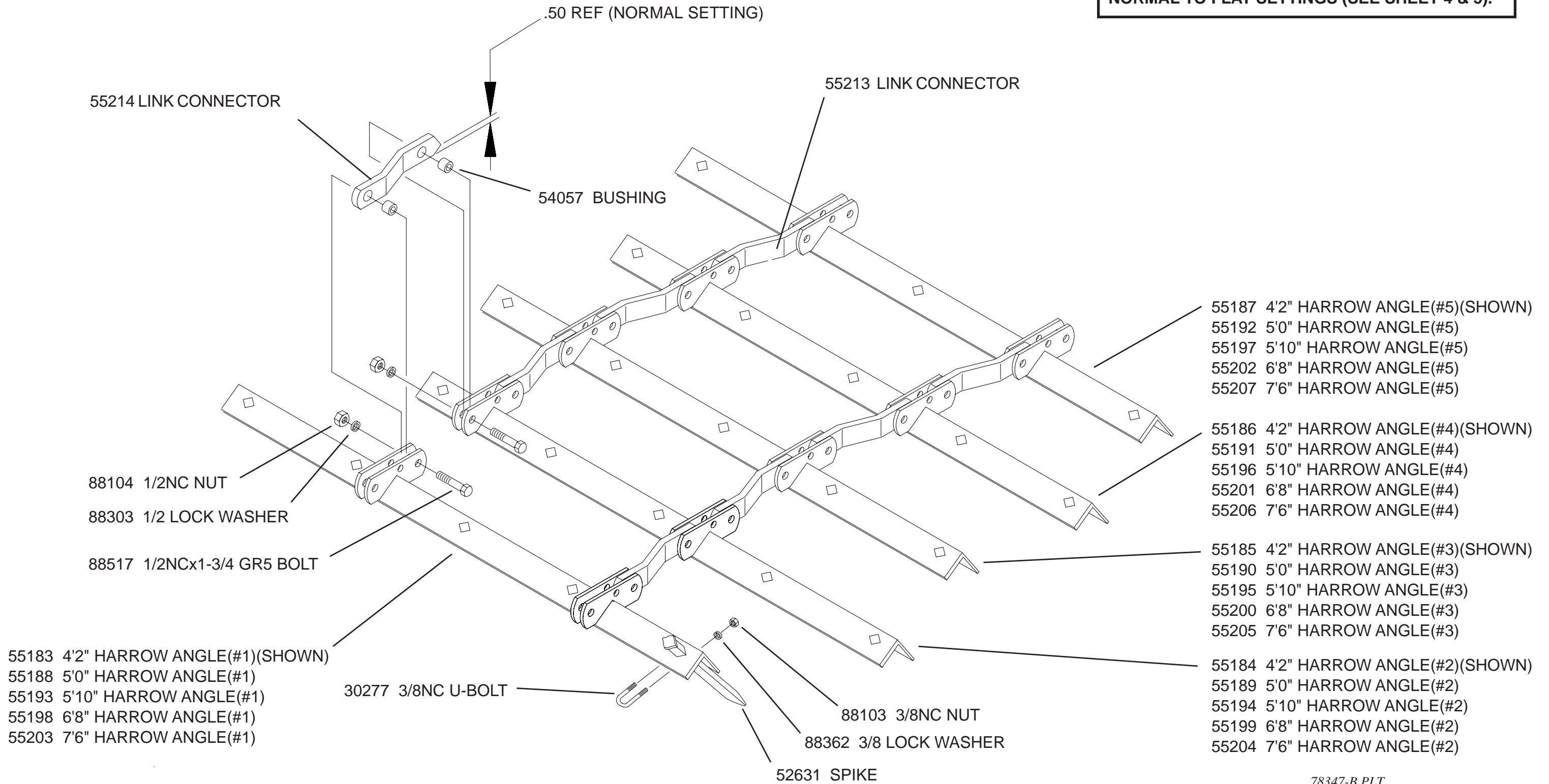


78347-A.PLT

SECTION ASSEMBLY

(4'2" HARROW SHOWN)

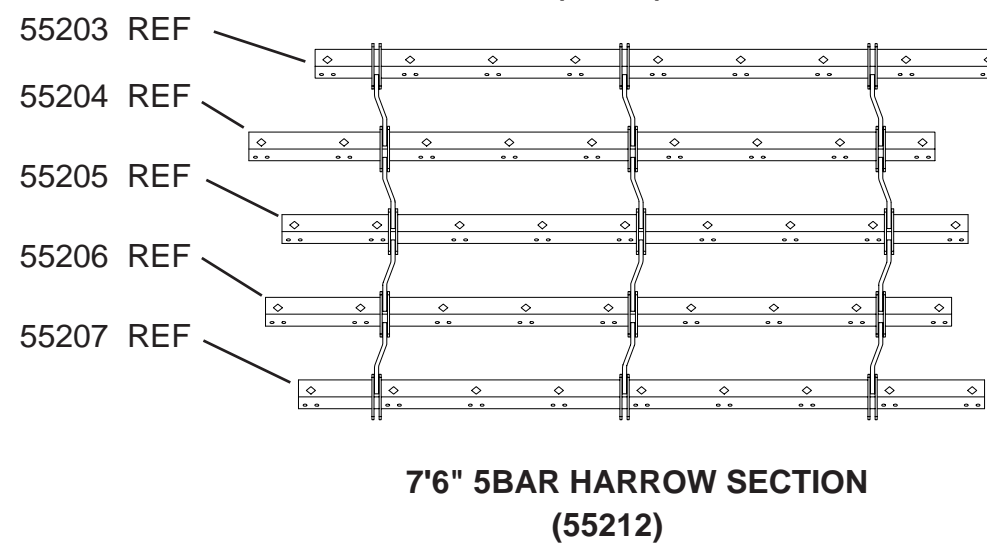
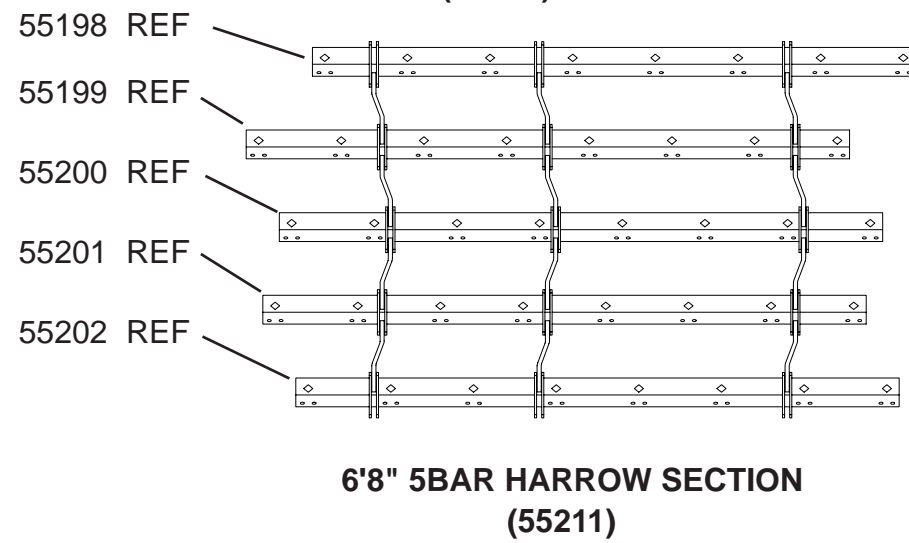
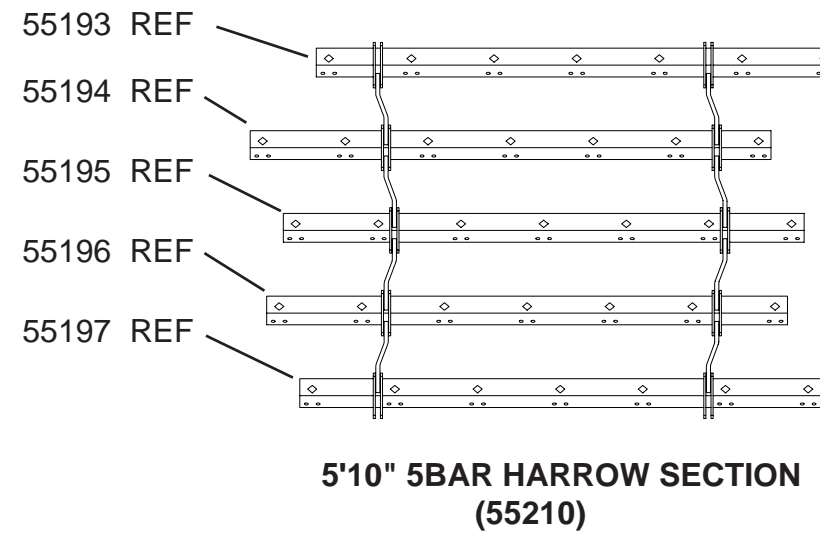
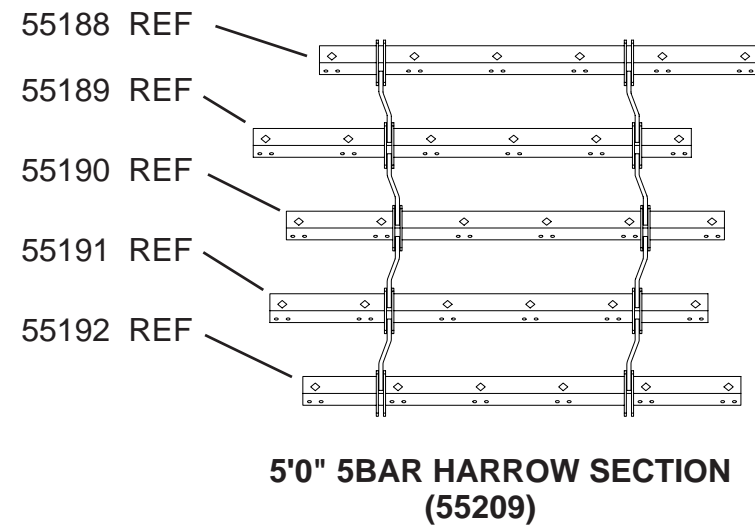
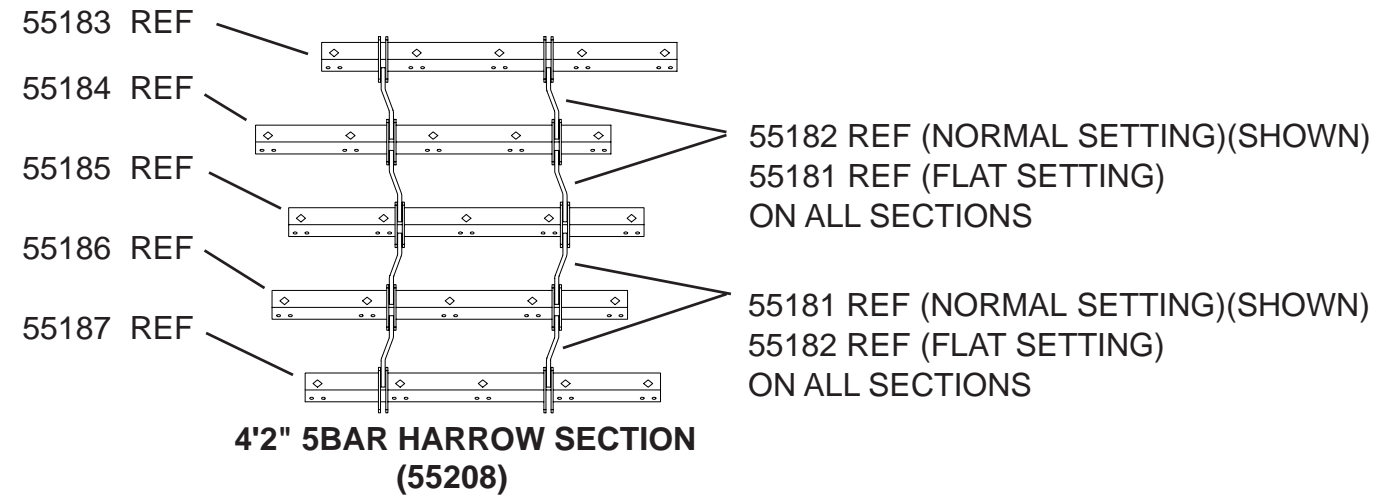
NOTE: 55181 AND 55182 LINKS CAN BE FLIPPED OVER TO CHANGE SPIKE TOOTH ANGLE FROM NORMAL TO FLAT SETTINGS (SEE SHEET 4 & 5).



78347-B.PLT

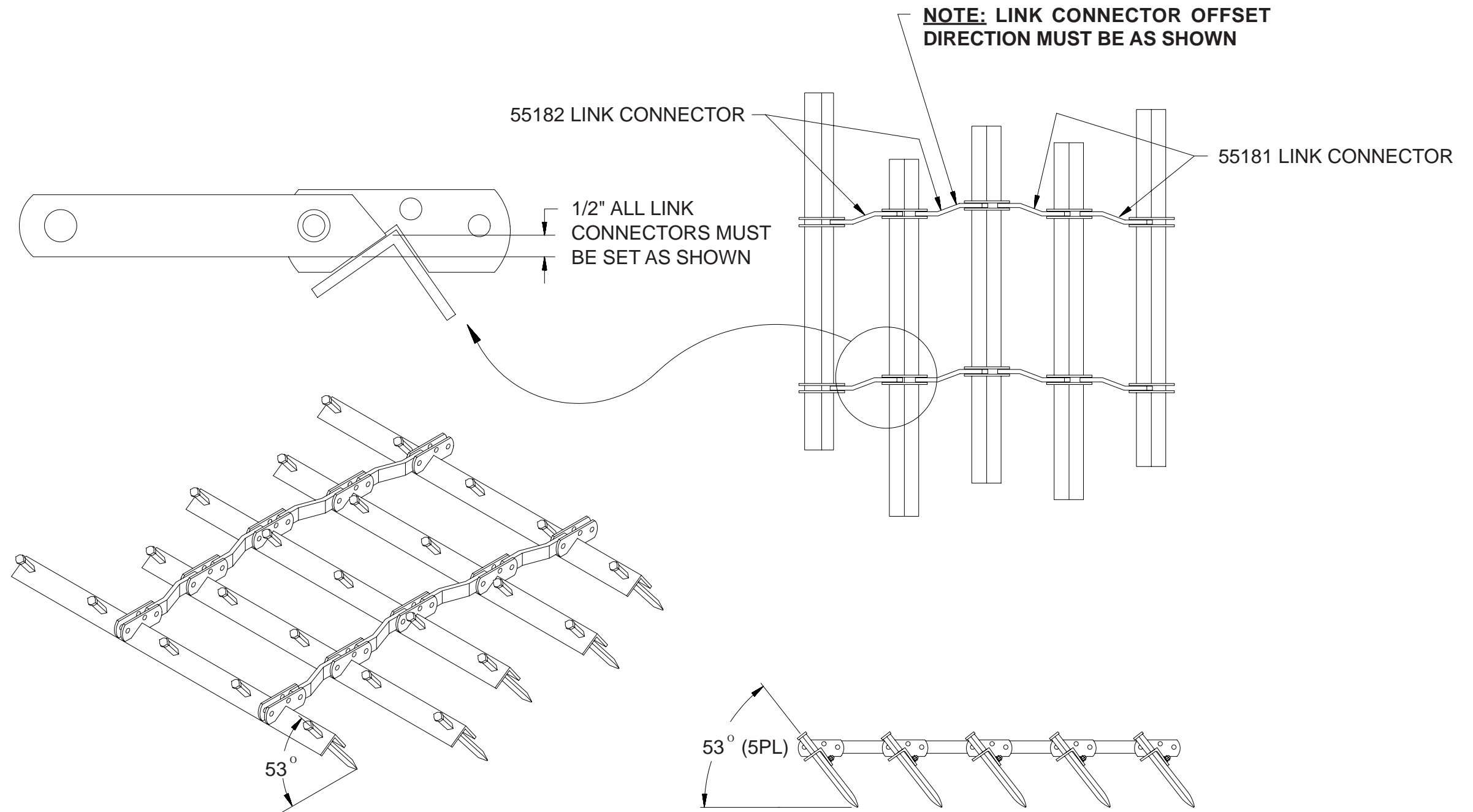
SECTION LAYOUT REFERENCE SHEET

NORMAL LINK CONNECTION (SHOWN)



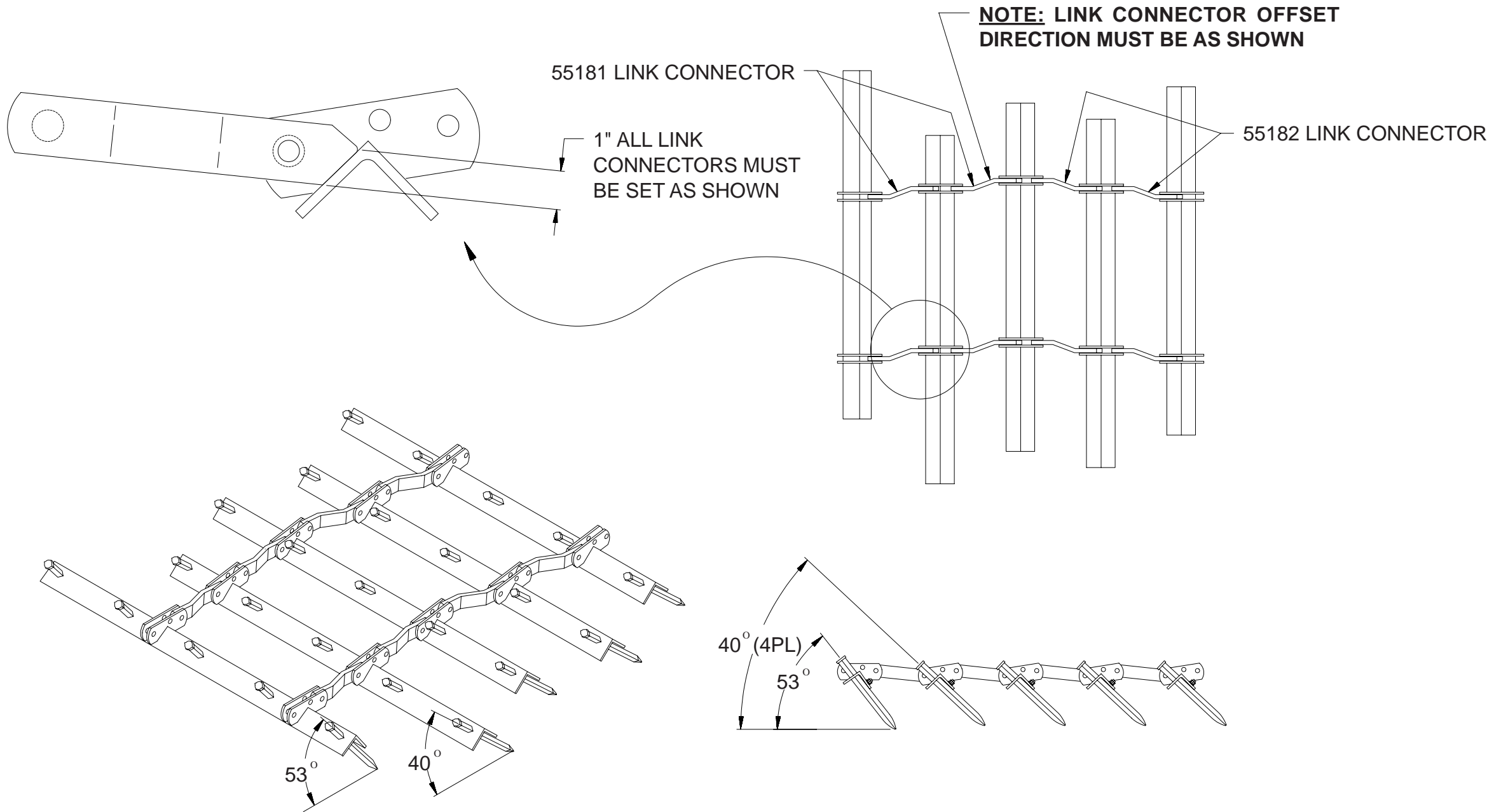
78347-C.PLT

LINK CONNECTOR ASSEMBLY ILLUSTRATION - NORMAL SETTING



78347-D.PLT

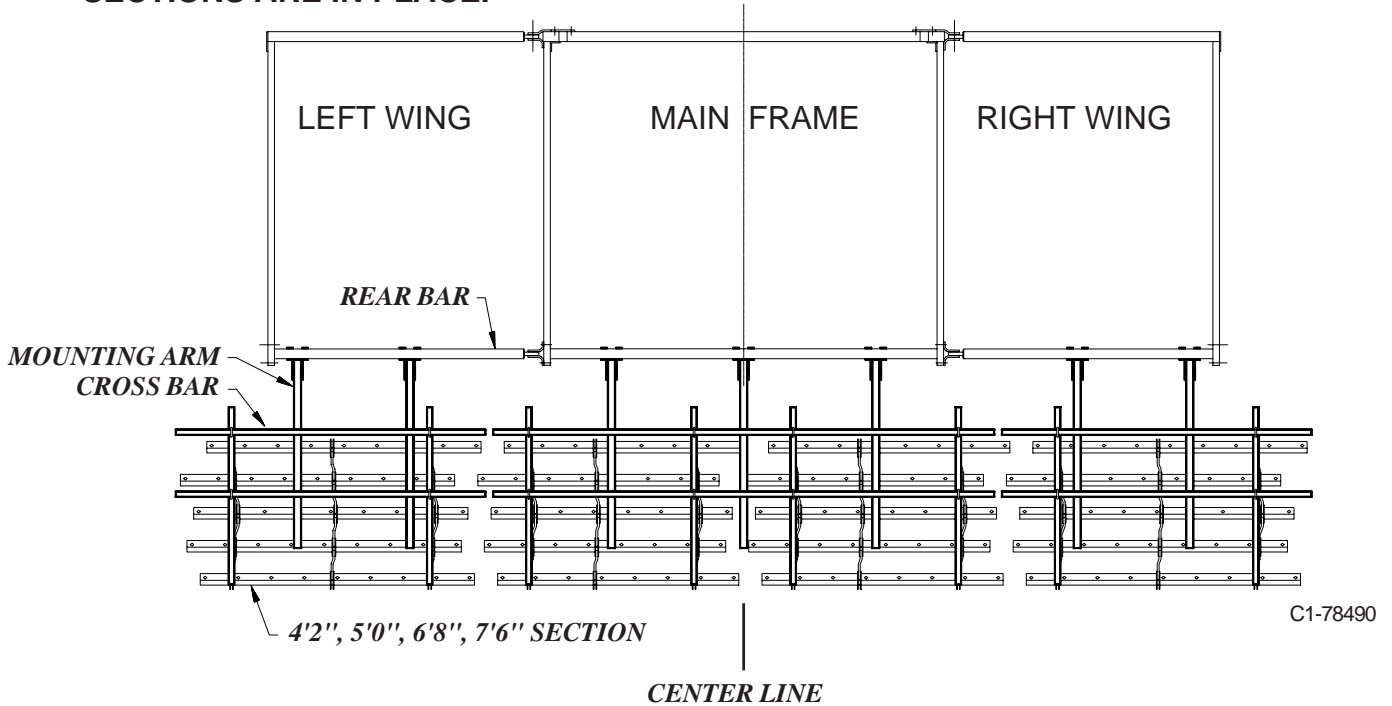
LINK CONNECTOR ASSEMBLY ILLUSTRATION - FLAT SETTING



78347-E.PLT

SOILPRO 513 SPIKE TOOTH HARROW MOUNTING CHART

NOTE: EXACT ARM LOCATION COULD VARY 2"-3" EITHER DIRECTION, DEPENDENT ON IMPLEMENT ACCESSORIES. DO NOT TIGHTEN ARMS COMPLETELY UNTIL ALL SECTIONS ARE IN PLACE.



**NOTE: 5 BAR SECTION SHOWN.
3 BAR SECTION MOUNT THE SAME.**

124	-	CROSS BAR
50 2 50	-	ARM LOCATION (INCH FROM CENTER LINE)
5'10" 5'10"	-	SECTION

	LEFT WING	MAIN FRAME		RIGHT WING
SoilPro 513 5/30-7/24		50	5 5 50	
		7'6"	7'6"	
SoilPro 513 7/30-9/24		50	0 50	
		5'10"	7'6" 5'10"	
SoilPro 513 11/24	70 140 98	50	5 5 50	70 98 140
	6'8"	5'10"	5'10"	6'8"
SoilPro 513 13/24	94 140 98	50	5 5 50	94 98 140
	7'6"	7'6"	6'8"	7'6"

