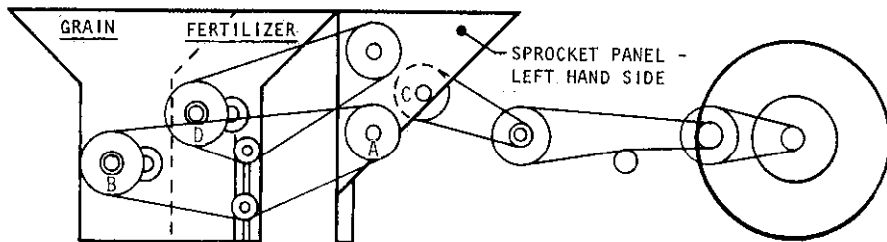
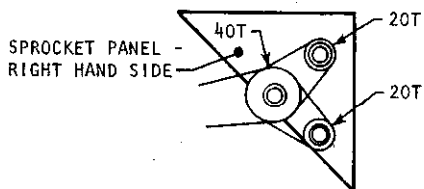


WIL-RICH AIR-SEEDER APPLICATION CHART

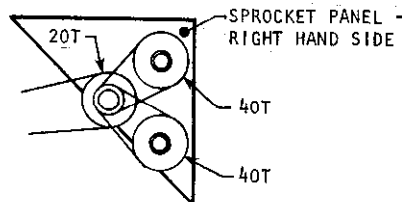


SPROCKET CHANGE DIAGRAM



HIGH RANGE DIAGRAM

NOTE: EXCHANGE 20T WITH 40T SPROCKET TO CHANGE FROM LOW TO HIGH RANGE



LOW RANGE DIAGRAM

WIL-RICH AIR-SEEDER APPLICATION RATES

*GRAIN APPLICATION RATES		NUMBER OF TEETH																					
*SPROCKET (A)		20	20	20	26	26	20	32	32	39	40	39	36	39	40	26	36	39	40	32	36	39	40
*SPROCKET (B)		40	36	32	40	36	26	40	36	40	39	36	32	32	32	20	26	26	26	20	20	20	20
CROP	#RANGE	POUNDS PER ACRE																					
WHEAT	HIGH	35	39	44	46	51	55	57	63	69	72	77	79	86	89	92	98	106	109	113	127	138	142
	LOW	9	10	11	12	13	14	14	16	17	18	19	20	22	22	23	24	27	27	28	32	35	35
BARLEY	HIGH	38	41	45	48	53	56	59	65	71	75	79	82	89	91	95	101	110	113	120	132	143	146
	LOW	9	10	12	12	14	14	15	17	18	19	20	21	23	24	24	26	28	29	30	34	37	38
RYE	HIGH	35	39	44	46	51	55	57	63	69	72	77	79	86	89	92	98	106	109	113	127	138	142
	LOW	9	10	11	12	13	14	14	16	17	18	19	20	22	22	23	24	27	27	28	32	35	35
OATS	HIGH	27	30	33	35	39	41	43	48	52	55	58	60	66	67	70	74	81	83	86	97	105	108
	LOW	7	7	8	9	10	10	11	12	13	14	15	15	16	17	18	19	20	21	22	24	26	27
FLAX	HIGH	18	20	23	24	27	28	30	33	36	38	40	41	45	46	48	51	55	57	59	66	72	74
	LOW	5	5	6	6	7	7	7	8	9	9	10	10	11	12	12	13	14	14	15	17	18	18
SOYBEANS	HIGH	31	34	39	41	45	48	50	56	60	64	67	70	76	78	81	86	94	96	100	112	122	125
	LOW	8	9	10	10	11	12	13	14	15	16	17	17	19	20	20	22	23	24	25	28	30	30
MILLET	HIGH	16	18	20	21	23	25	26	28	31	33	34	36	39	40	41	44	48	49	51	57	62	64
	LOW	4	4	5	5	6	6	6	7	8	8	9	9	10	10	10	11	12	12	13	14	16	16
RAPE	HIGH	13	14	16	17	18	20	20	23	25	26	28	29	31	32	33	35	38	39	41	46	50	51
	LOW	3	4	4	4	5	5	5	6	6	7	7	8	8	8	9	10	10	10	10	12	12	13
SORGHUM	HIGH	16	18	20	21	23	25	26	28	31	33	34	36	39	40	41	44	48	49	51	57	62	64
	LOW	4	4	5	5	6	6	6	7	8	8	9	9	10	10	10	11	12	12	13	14	16	16
ALFALFA	HIGH	19	21	24	25	28	29	31	34	37	39	41	43	47	48	50	53	57	59	61	69	75	77
	LOW	5	5	6	6	7	7	8	9	9	10	10	11	12	12	12	13	14	15	15	17	19	19
SWEET CLOVER	HIGH	23	25	28	29	33	35	36	40	44	46	49	51	55	57	59	63	68	70	73	82	82	91
	LOW	6	6	7	7	8	9	9	10	11	12	12	13	14	14	15	16	17	17	18	20	22	23
BLUE GRASS	HIGH	17	19	21	22	25	27	28	31	33	35	37	39	42	43	45	47	52	53	55	62	67	69
	LOW	4	5	5	6	6	7	7	8	8	9	9	10	10	11	11	12	13	13	14	15	17	17

NOTE: CLEAN SEED OF AVERAGE WEIGHT AND SIZE WAS USED IN PREPARING THIS CHART.

* REFER TO SPROCKET DIAGRAM # REFER TO RANGE DIAGRAM

*DRY FERTILIZER		NUMBER OF TEETH																					
*SPROCKET (C)		20	20	20	26	26	20	32	32	39	40	39	36	39	40	26	36	39	40	32	36	39	40
*SPROCKET (D)		40	36	32	40	36	26	40	36	40	39	36	32	32	32	20	26	26	26	20	20	20	20
	#RANGE	POUNDS PER ACRE																					
GRANULATED FERTILIZER	HIGH	31	35	39	41	45	48	50	56	61	64	68	72	77	79	82	87	94	97	100	113	122	125
	LOW	8	9	10	10	11	12	13	14	15	16	17	18	19	20	21	22	23	24	25	28	30	31

THE ABOVE CHART IS BASED ON DRY PELLET TYPE FREE RUNNING FERTILIZER, WEIGHING 80 LBS PER BUSHEL. DUE TO DIFFERENT TYPES OF FERTILIZER, THE RATES MAY VARY, SO THE RATE SHOULD BE CHECKED AND ADJUSTMENT MADE IF NECESSARY.

* REFER TO SPROCKET DIAGRAM # REFER TO RANGE DIAGRAM