



PARTS MANUAL

5850 - 3 SECTION CHISEL PLOW

2012 PRODUCTION - SERIAL # 460470 & UP

 **WIL-RICH**

PO Box 1030
Wahpeton, ND 58074
PH (701) 642-2621
Fax (701) 642-3372

Orientation

Any reference to left (L) or right (R) sides or components is to be understood as being viewed from behind the implement and looking forward.

Serial Number Break

Every implement has a serial number located on the frame. These serial numbers are consecutively assigned to the implements as they are manufactured. To aid in part ordering, we reference to the serial number at the point the change occurred to provide an accurate means of determining the proper parts. See contents graphic, page 3, for location.

Modifications

It is the policy of WIL-RICH Operations to improve its products whenever possible and practical to do so. We reserve the right to make changes, improvements, and modifications at any time without incurring the obligation to make such changes, improvements and modifications on any equipment sold previously.

Abbreviations

| | |
|------|------------------------|
| ACT | Actual |
| ASSY | Assembly |
| BLD | Blade |
| BRKT | Bracket |
| CTR | Center |
| CP | Cup Point |
| (FF) | Female Female |
| GR | Grade of Bolt |
| HD | Heavy Duty |
| HDWE | Hardware |
| LH | Left Hand |
| (MF) | Male Female |
| MF | Main Frame |
| MTG | Mounting |
| NC | National Course Thread |
| NF | National Fine Thread |
| NPT | National Pipe Thread |
| RH | Right Hand |
| SS | Screw Stop |
| SST | Stainless Steel |
| TA | Tandem |
| TBP | Top Bypass |
| W/ | With |
| W/O | Without |

CONTENTS

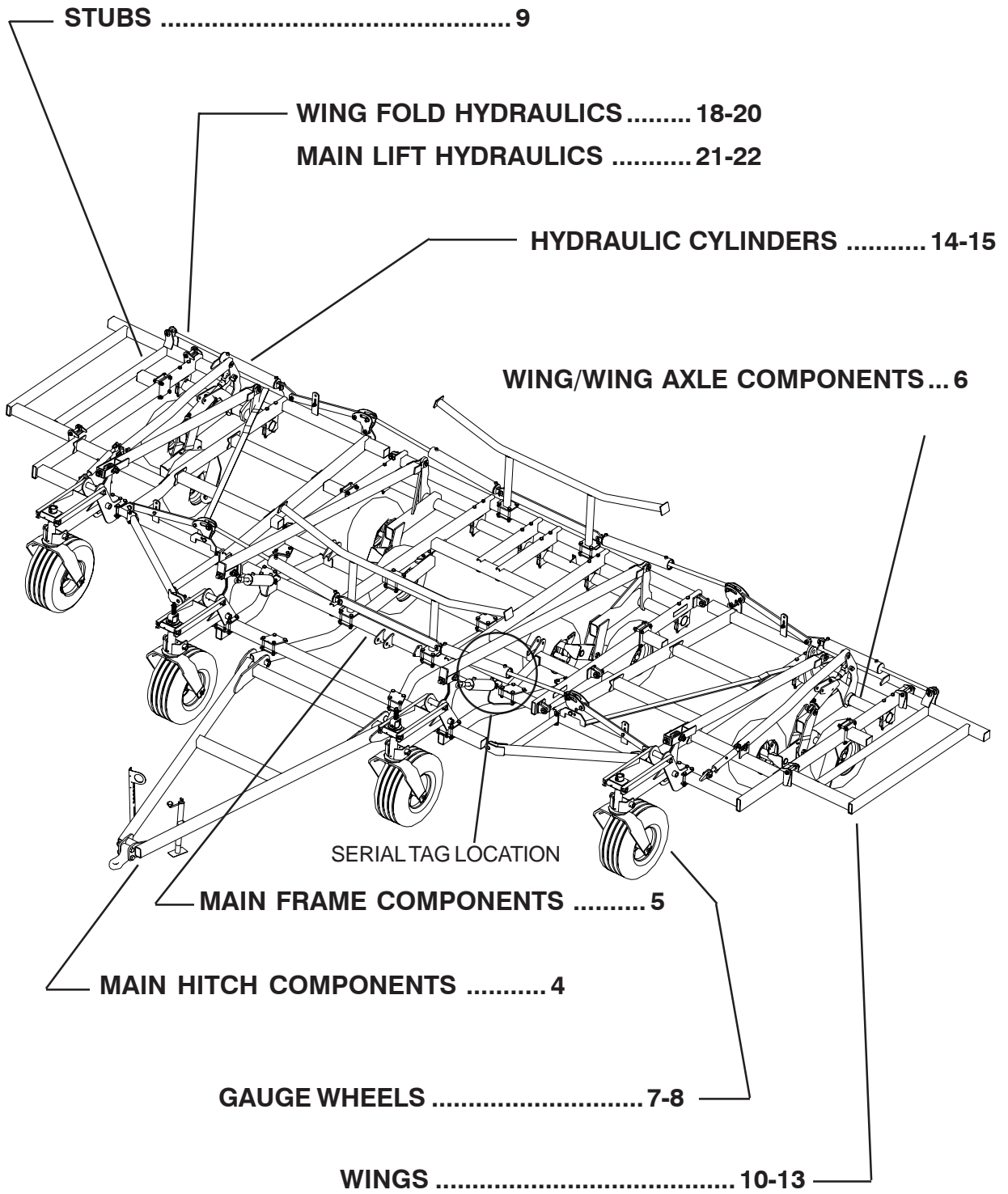
| | |
|--------------------------------------|-------|
| FRONT HITCH/FRAME | 4 |
| MAIN FRAME | 5 |
| MAIN/WING LIFT AXLE | 6 |
| MAIN FRONT LIFT AXLE | 7 |
| WING FRONT LIFT AXLE | 8 |
| 1' & 2' STUB ATTACHMENTS | 9 |
| 9 FT WING COMPONENTS | 10 |
| 12 FT WING COMPONENTS | 11 |
| WING AXLE COMPONENTS | 12 |
| 3 FT OUTER WING | 13 |
| WING FOLD CYLINDERS | 14 |
| MAIN LIFT TOP BYPASS CYLINDER | 15 |
| SINGLE POINT DEPTH CONTROL | 16-17 |
| BASE WING FOLD HYDRAULICS | 18 |
| 9 FT W/3FT OUTER WING FOLD HYD | 19 |
| 12 FT W/3FT OUTER WING FOLD HYD | 20 |
| MAIN LIFT HYDRAULICS - 31 FT BASE | 21 |
| MAIN LIFT HYDRAULICS - 37 FT BASE | 22 |
| 1000 LB CP SHANK ASSY | 23 |
| 650 LB SHANK ASSEMBLY | 24 |
| 6 BOLT HUB - 2" SPINDLE ASSY | 25 |
| GAUGE WHEEL HUB & SPINDLE | 26 |
| FRONT GAGE WHEEL | 27 |
| TIRES, ASSEMBLIES, RIMS, VALVE STEMS | 28 |
| SPIKES | 29 |
| REAR HITCH W/HINGED TONGUE | 30 |
| HEAVY DUTY REAR HITCH | 31 |
| LIGHTS | 32 |
| DECALS | 33 |
| WARRANTY | 34 |

Standard Nuts and Lock Washers

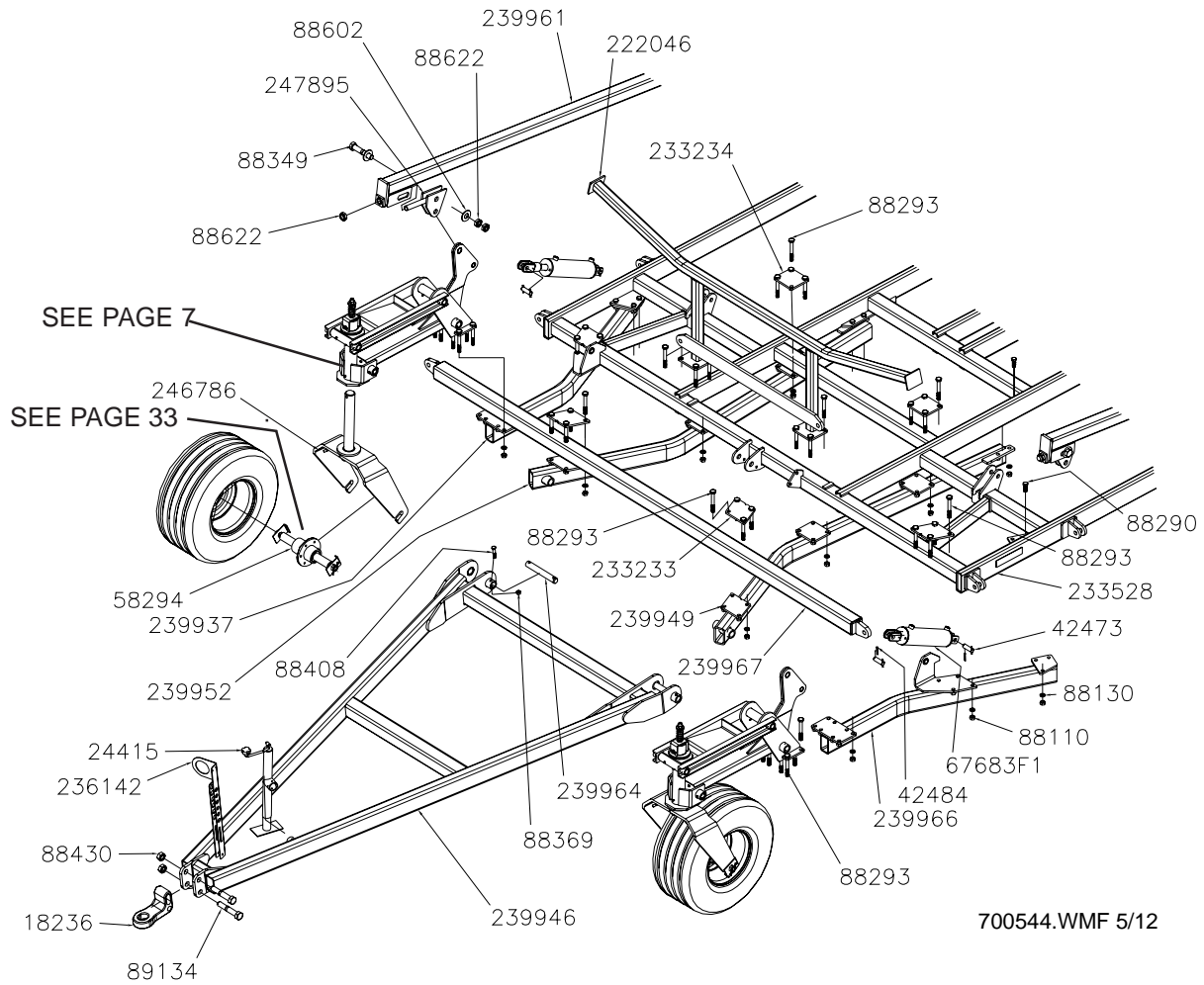
| | | | |
|-------|-----------|-------|-----------------|
| 88172 | 1/4NC Nut | 88262 | 1/4 Lock Washer |
| 88103 | 3/8NC Nut | 88362 | 3/8 Lock Washer |
| 88104 | 1/2NC Nut | 88303 | 1/2 Lock Washer |
| 88126 | 5/8NC Nut | 88129 | 5/8 Lock Washer |
| 88110 | 3/4NC Nut | 88130 | 3/4 Lock Washer |
| 88371 | 7/8NC Nut | 88341 | 7/8 Lock Washer |

Note: Standard nuts and lock washers mat not be called out. Anything other than standard will be called out.

CONTENTS

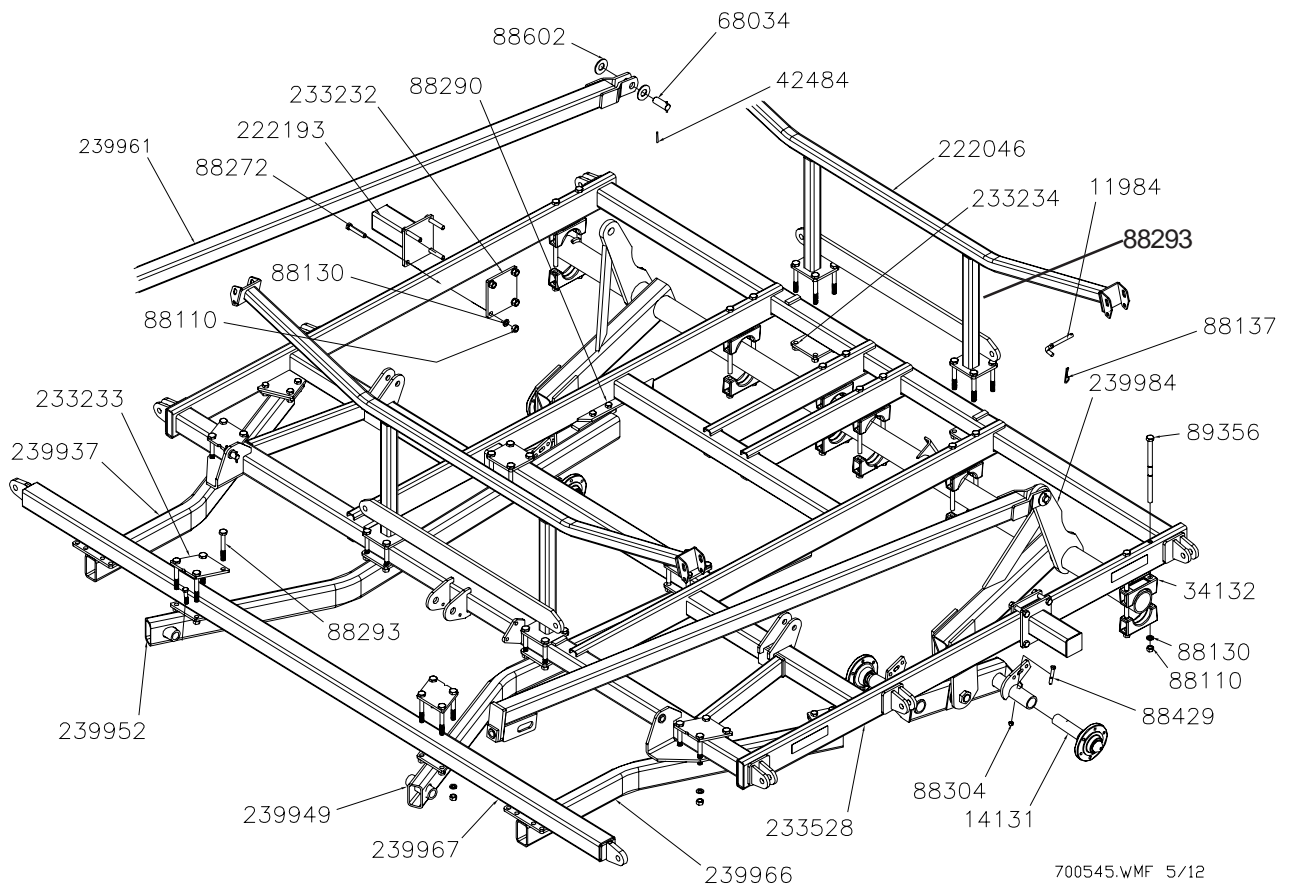


FRONT HITCH/FRAME COMPONENTS



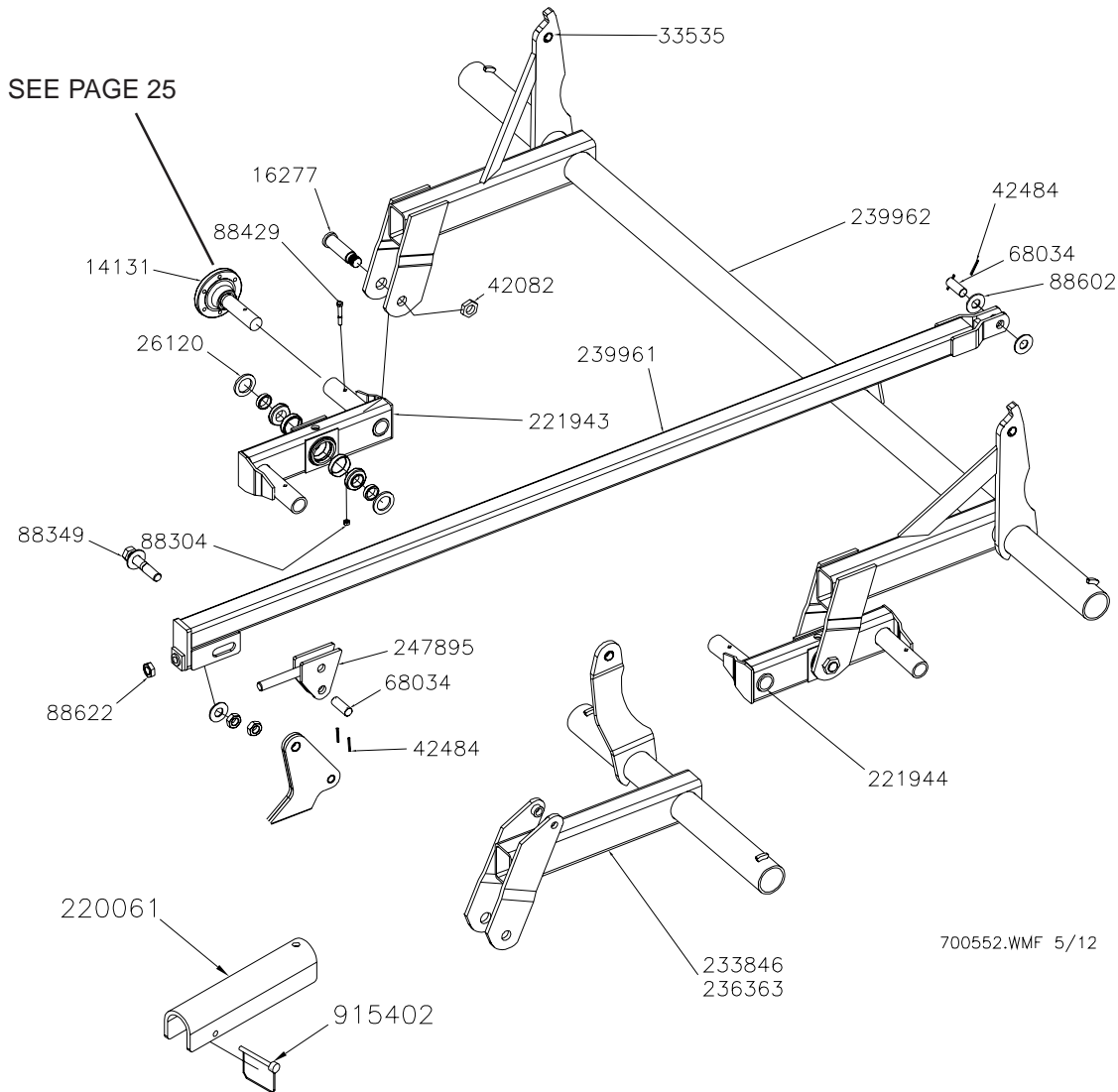
| PART NO. | DESCRIPTION | PART NO. | DESCRIPTION |
|----------|------------------------------|----------|---------------------------------------|
| 18236 | CAST DUAL HITCH | 24415 | JACK |
| 222046 | 5830 WING REST | 42473 | HEADLESS PIN (H) (2) 1X2-3/8 |
| 233233 | MOUNT PLATE PAINTED | 42484 | 1/4 X 2-1/4 ROLL PIN |
| 233234 | MOUNT PLATE PAINTED | 58294 | YOKE HUB ASSEMBLY (22" SPINDLE) |
| 233528 | 13FT MAIN FRAME-5800 CP | 67683F1 | HYD CYL 4X12.56 TBP ILP FGS #A519CY24 |
| 236142 | FORMED CHANNEL-HYD HOSE BRKT | 88110 | NUT HEX 3/4-10NC 5Z |
| 239937 | RIGHT HITCH FRAME TUBE | 88130 | WSHR HLK 3/4ID(13/16ACT) Z |
| 239946 | MAIN HITCH 5850 | 88290 | BLT HEX 3/4-10NCX2 8YZ |
| 239949 | RIGHT HITCH TUBE - 5850 | 88293 | BLT HEX 3/4-10NCX6 5Z |
| 239952 | LEFT HITCH TUBE - 5850 | 88349 | BLT HEX 1-1/4-7NCX6-1/2 5Z |
| 239961 | MAIN FRAME MAST TUBE - LONG | 88369 | NUT 2POSLK 5/8-11NC 5Z |
| 239964 | PIVOT PIN | 88408 | BLT HEX 5/8-11NCX3 5Z |
| 239966 | LEFT HITCH FRAME TUBE | 88430 | NUT 2POSLK 1-1/4-7NC 5Z |
| 239967 | FRONT CROSS TUBE | 88602 | WSHR FLAT 1-1/4(1-3/8X3ACT) Z |
| 246786 | 5850 GAGE WHEEL YOKE | 88622 | NUT JAM 1-1/4-7NC 5Z |
| 247895 | ADJUST LINK - HIGH (ZINC) | 89134 | BLT HEX 1-1/4-7NCX7 5Z |

MAIN FRAME COMPONENTS



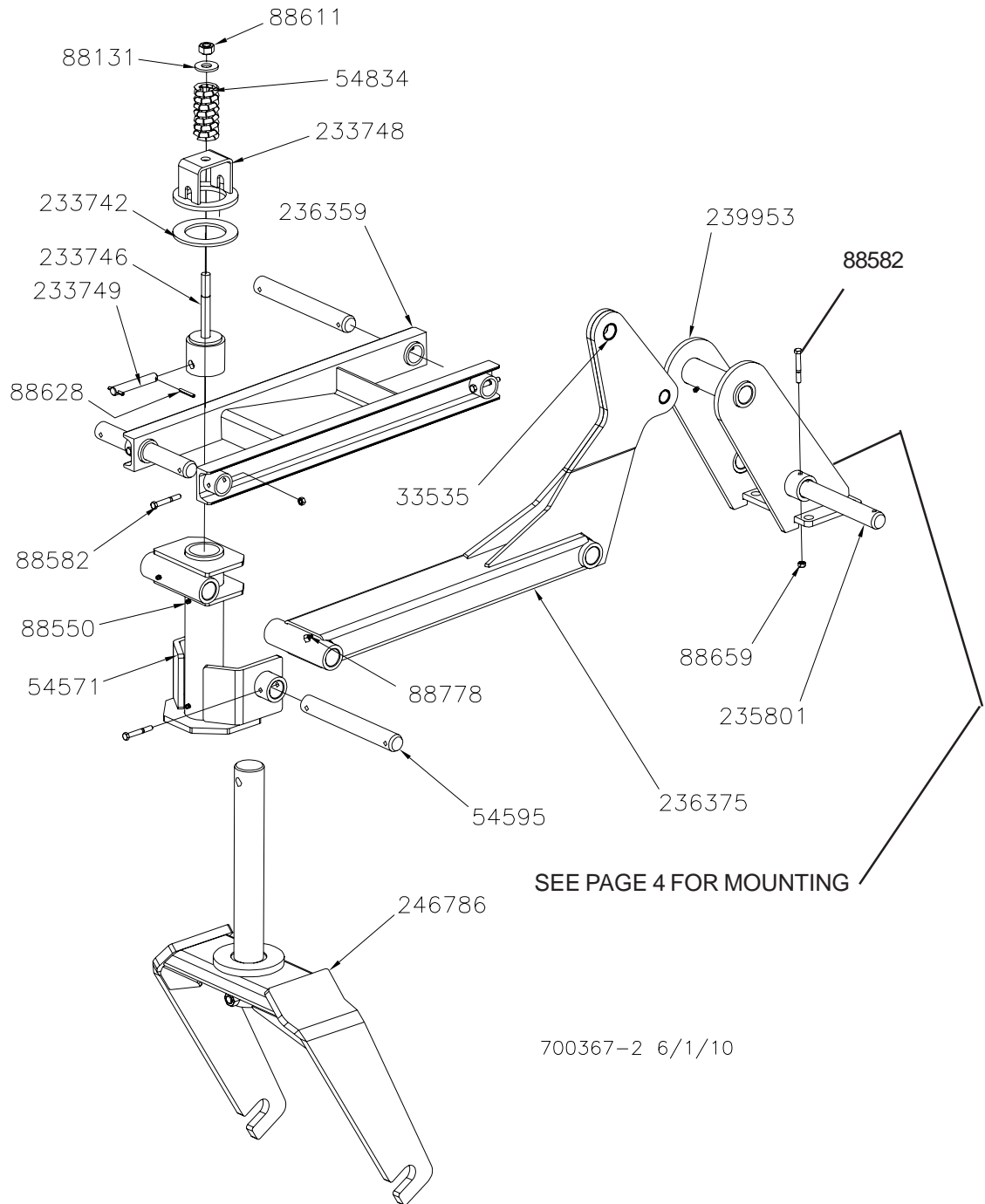
| PART NO. | DESCRIPTION | PART NO. | DESCRIPTION |
|----------|--------------------------------|----------|-------------------------------|
| 11984 | WING LOCK PIN 5/8X4-15/16 | 239967 | FRONT CROSS TUBE |
| 88137 | PIN SPRLK 3/16 X 3-3/4 PRLS8 Z | 239984 | MAIN AXLE ASSY 5850 |
| 14131 | 2IN HUB & SPINDLE (LG7830015) | 34132 | AXLE CLAMP ASSEMBLY (RED) |
| 222046 | 5830 WING REST | 42484 | 1/4 X 2-1/4 ROLL PIN |
| 222193 | CP SHANK STUB | 68034 | HEADLESS PIN(2) 1-1/4X3.38 |
| 233232 | STUB PLATE PAINTED | 88110 | NUT HEX 3/4-10NC 5Z |
| 233233 | MOUNT PLATE PAINTED | 88130 | WSHR HLK 3/4ID(13/16ACT) Z |
| 233234 | MOUNT PLATE PAINTED | 88272 | BLT HEX 3/4-10NCX4 5Z |
| 233528 | 13FT MAIN FRAME-5800 CP | 88290 | BLT HEX 3/4-10NCX2 8YZ |
| 239937 | RIGHT HITCH FRAME TUBE | 88293 | BLT HEX 3/4-10NCX6 5Z |
| 239949 | RIGHT HITCH TUBE - 5850 | 88304 | NUT 2POSLK 1/2-20NF 5P |
| 239952 | LEFT HITCH TUBE - 5850 | 88429 | BLT HEX 1/2-20NFX3-1/4 5Z |
| 239961 | MAIN FRAME MAST TUBE - LONG | 88602 | WSHR FLAT 1-1/4(1-3/8X3ACT) Z |
| 239966 | LEFT HITCH FRAME TUBE | 89356 | BLT HEX 3/4-10NC X 14 5Z |

MAIN/WING LIFT AXLE COMPONENTS



| PART NO. | DESCRIPTION | PART NO. | DESCRIPTION |
|----------|-------------------------------|----------|---------------------------------|
| 12103 | BEARING CONE 1-3/4ID (25580) | 247895 | ADJUST LINK - HIGH (ZINC) |
| 12104 | BEARING CUP 3.265OD (25520) | 26120 | SEAL |
| 14131 | 2IN HUB & SPINDLE (LG7830015) | 33535 | SPRING TENSION BUSHING (1-1/4") |
| 16277 | TANDEM SHAFT | 42082 | 1-1/2NF HYDRA JAM LOCK NUT |
| 16278 | BEARING BUSHING | 42484 | 1/4 X 2-1/4 ROLL PIN |
| 220061 | 1-1/2" CHNL LOCK 10" (BLK) | 68034 | HEADLESS PIN(2) 1-1/4X3.38 |
| 221943 | RIGHT 3X20 WALKING TANDEM | 88304 | NUT 2POSLK 1/2-20NF 5P |
| 221944 | LEFT 3X20 WALKING TANDEM | 88349 | BLT HEX 1-1/4-7NCX6-1/2 5Z |
| 233846 | WING AXLE - RIGHT INNER | 88429 | BLT HEX 1/2-20NFX3-1/4 5Z |
| 236363 | WING AXLE - LEFT INNER | 88602 | WSHR FLAT 1-1/4(1-3/8X3ACT) Z |
| 239961 | MAIN FRAME MAST TUBE - LONG | 88622 | NUT JAM 1-1/4-7NC 5Z |
| 239962 | MAIN AXLE 5850 | 915402 | 5/16 X 2-3/4 LYNCH PIN |

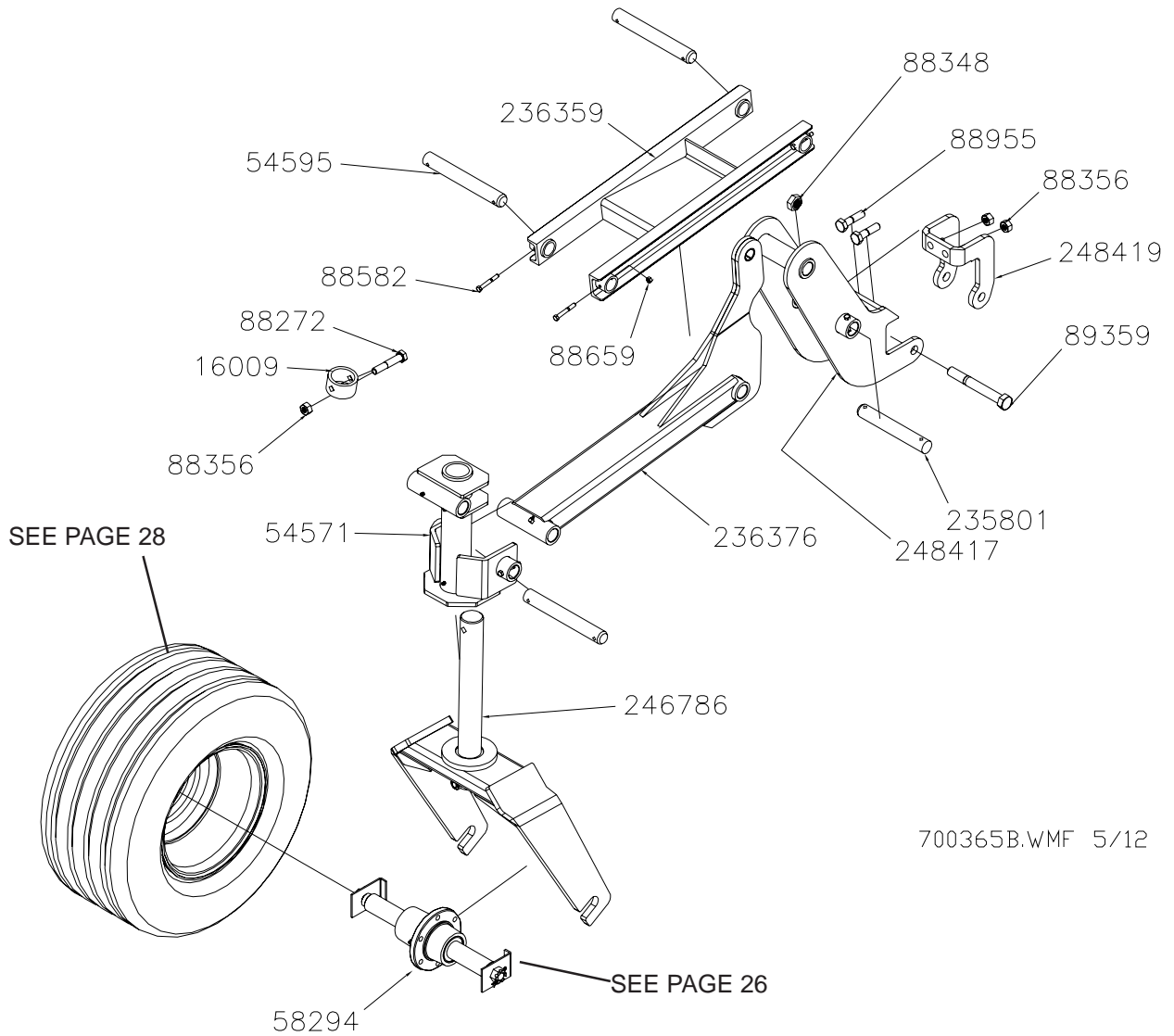
MAIN FRONT LIFT AXLE COMPONENTS



700367-2 6/1/10

| PART NO. | DESCRIPTION | PART NO. | DESCRIPTION |
|----------|---------------------------------|----------|-------------------------------|
| 233742 | DAMPER BRAKE PAD | 54571 | GAUGE WHEEL PIVOT |
| 233746 | DAMPER CAP | 54595 | HEADLESS PIN(2) 1-1/2X9-19/32 |
| 233748 | TOP DAMPER BRACKET | 54834 | RED 4-1/2" COMPRESSION SPRING |
| 233749 | PIN (ZINC) | 88131 | WSHR FLAT 3/4(13/16X2ACT) Z |
| 235801 | PIVOT PIN (1-1/2 X 10) | 88550 | FTG GRS 1/4-28 3038-B |
| 236359 | TOP LINK ARM | 88582 | BLT HEX 3/8-16NCX2-3/4 5Z |
| 236375 | MAIN LOWER GAGE ARM | 88611 | NUT NLK 3/4-10NC 5Z |
| 239953 | CENTER LIFT MAST | 88628 | PIN ROLL 1/4DIAX1-3/4 Z |
| 236370 | 5850 GAGE WHEEL YOKE | 88659 | NUT TOP LK 3/8-16NC 5Z |
| 33535 | SPRING TENSION BUSHING (1-1/4") | 88778 | FTG GRS 1/4-28NF 45DEG 3053-B |

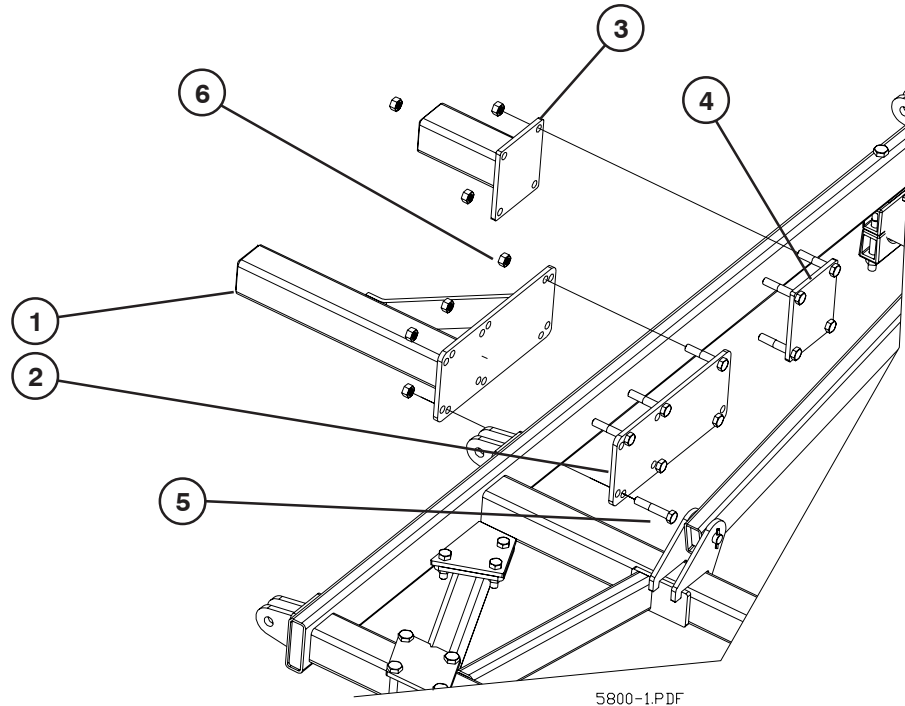
WING FRONT LIFT AXLE COMPONENTS



700365B.WMF 5/12

| PART NO. | DESCRIPTION | PART NO. | DESCRIPTION |
|----------|---------------------------------|----------|----------------------------------|
| 16009 | COLLAR | 88955 | BLT HEX 3/4 X 10NC X 3 8YZ |
| 54571 | GAUGE WHEEL PIVOT | 89359 | BLT HEX 1-8NC X 8 8YZ |
| 54595 | HEADLESS PIN(2) 1-1/2 X 9-19/32 | 222087 | WHL ASSY 31X13.5 6B 10" 12P GRAY |
| 58294 | YOKE HUB ASSEMBLY (22"SPINDLE) | 235801 | PIVOT PIN (1-1/2 X 10) |
| 88272 | BLT HEX 3/4-10NC X 4 5Z | 236359 | TOP LINK ARM |
| 88348 | NUT 2POSLK 1-8NC 5Z | 236376 | OUTER FRONT MAST ARM |
| 88356 | NUT 2POSLK 3/4-10NC 5Z | 246786 | 5850 GAGE WHEEL YOKE |
| 88582 | BLT HEX 3/8-16NC X 2-3/4 5Z | 248417 | FRONT LIFT MAST |
| 88659 | NUT TOP LK 3/8-16NC 5Z | 248419 | LIFT MAST LOCK PLATE |

1' & 2' STUB ATTACHEMENTS - FITS 2X5 & 2X6 FRAME TUBES



**233265 2' STUB GRP W/MTG HDW
FITS 2X5 & 2X6 FRAME TUBES**

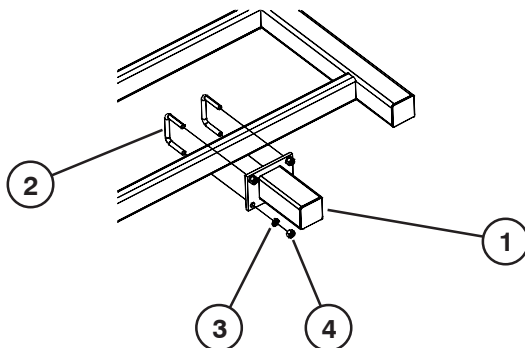
**233267 BOP 1' STUB GRP W/MTG HDW
FITS 2X5 & 2X6 FRAME TUBES**

| ITEM | PART NO. | DESCRIPTION |
|------|----------|------------------------------|
| 1 | 233263 | 2FT CHISEL PLOW STUB (2x5/6) |
| 2 | 233264 | STUB PLATE |
| 3 | 222193 | CP SHANK STUB |
| 4 | 233232 | STUB PLATE PAINTED |
| 5 | 88272 | 3/4NCx4 GR5 BOLT |
| 6 | 88356 | NUT 2POSLK 3/4-10NC 5Z |

1' STUB ATTACHMENT - FITS 2x4 FRAME TUBES

65123 1' STUB GRP L/MTG HDWE (2x4)

**STUB GROUPS CONTAIN PAIRS OF STUBS WITH
HARDWARE**

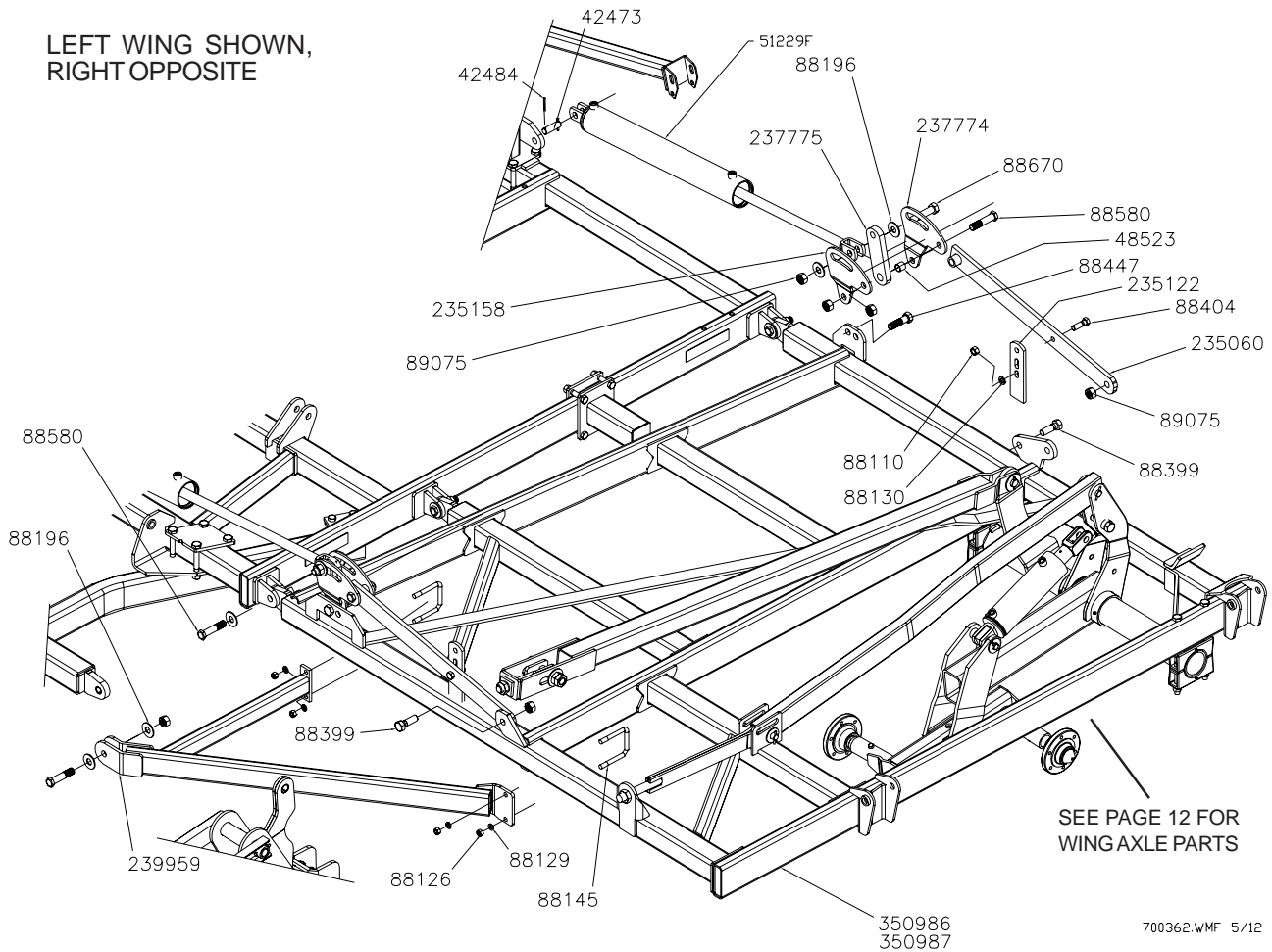


| ITEM | PART NO. | DESCRIPTION |
|------|----------|--------------------------|
| 1 | 13963 | MAIN FRAME 1FT STUB |
| 2 | 88388 | 5/8NCx4x3-1/4 U-BOLT |
| 3 | 88129 | WSHR HLK 5/8ID(11/16ACT) |
| 4 | 88126 | NUT HEX 5/8NC |

233279_C.PLT

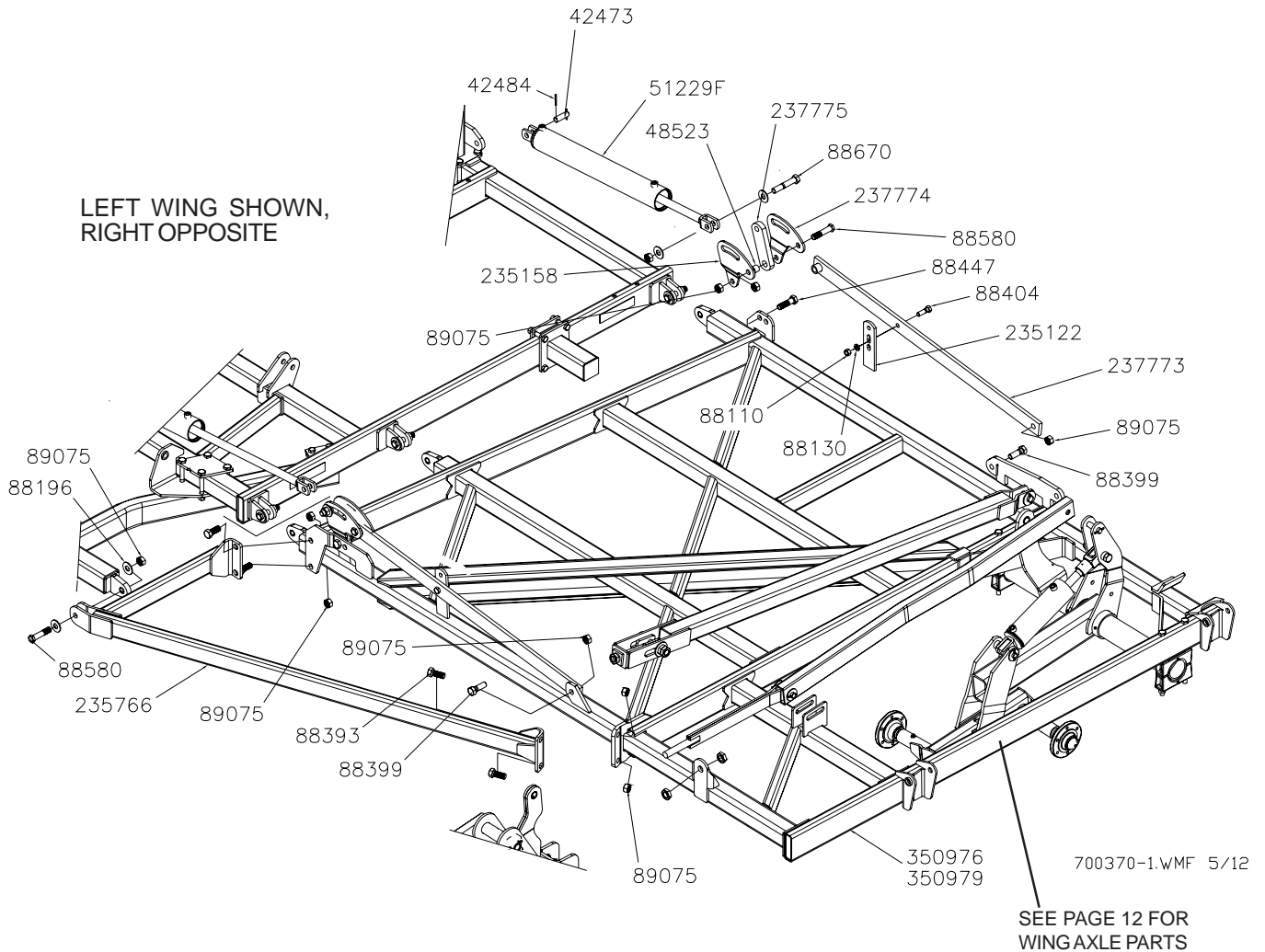
9 FT WING COMPONENTS

LEFT WING SHOWN,
RIGHT OPPOSITE



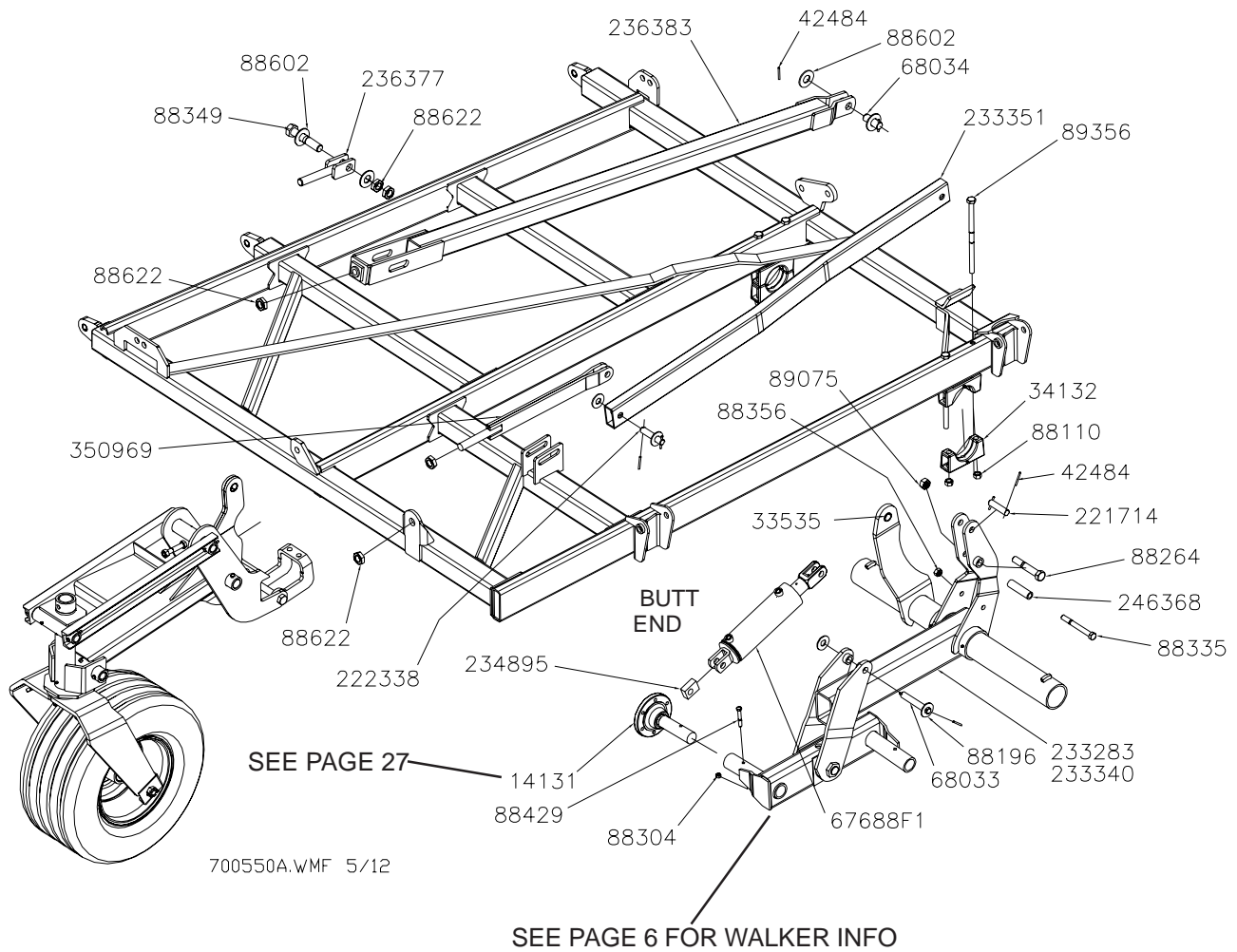
| PART NO. | DESCRIPTION | PART NO. | DESCRIPTION |
|----------|------------------------------|----------|-----------------------------|
| 42473 | HEADLESS PIN (H) (2) 1X2-3/8 | 88580 | BLT HEX 1-8NCX4-1/2 5Z |
| 42484 | 1/4 X 2-1/4 ROLL PIN | 88670 | BLT HEX 1-8NCX5-1/2 5Z |
| 48523 | WING LIFT BUSHING | 89075 | NUT NYLON LOCK 1-8NC 5Z |
| 88110 | NUT HEX 3/4-10NC 5Z | 235060 | SHORT WING LIFT STRAP |
| 88126 | NUT HEX 5/8-11NC 5Z | 235122 | WING REST FLAT |
| 88129 | WSHR HLK 5/8ID(11/16ACT) Z | 235158 | LIFT BRACKET - LEFT |
| 88130 | WSHR HLK 3/4ID(13/16ACT) Z | 237774 | LIFT BRACKET - RIGHT |
| 88145 | BLT-U 5/8-11NCX4X5-1/4 Z | 237775 | CP LIFT LINK |
| 88196 | WSHR FLAT 1(1-1/16X2-1/2ACT) | 239959 | 9FT WING BRACE 5850 |
| 88399 | BLT HEX 1-8NCX3 5Z | 350986 | 9FT 5800 CP WING-LEFT-2012 |
| 88404 | BLT HEX 3/4-10NCX2-1/2 5Z | 350987 | 9FT 5800 CP WING-RIGHT-2012 |
| 88447 | BLT HEX 1-8NCX3-1/2 5Z | 51229F | CYL HYD 4X30 FGS #A519CY02 |

12FT WING COMPONENTS



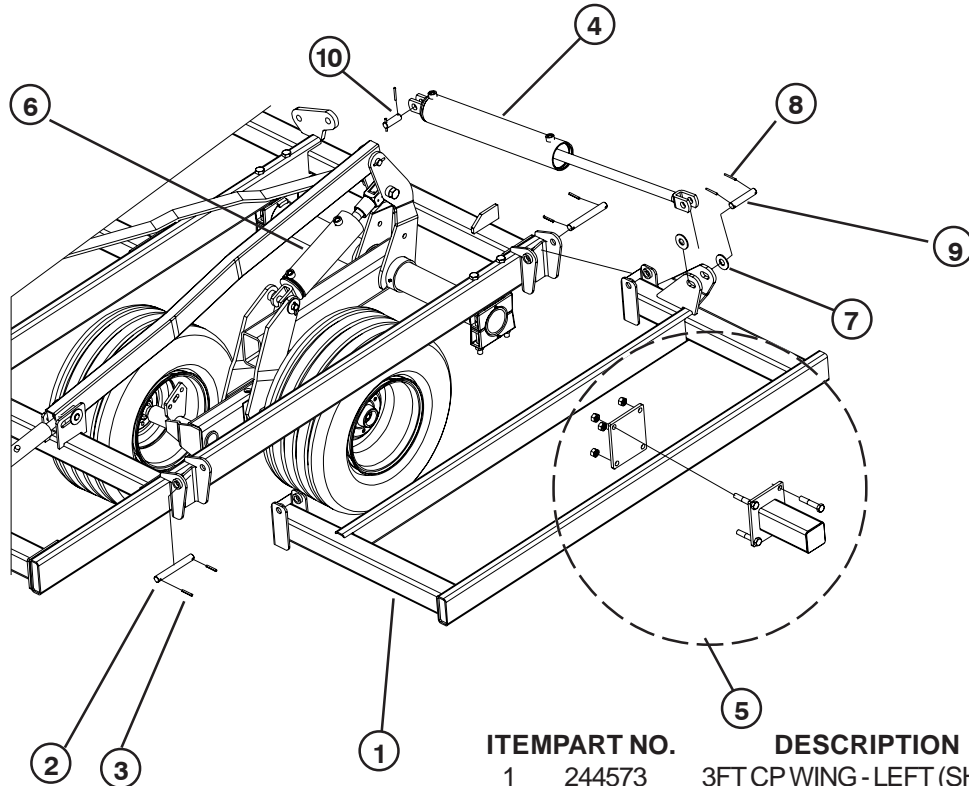
| PART NO. | DESCRIPTION | PART NO. | DESCRIPTION |
|----------|--------------------------------|----------|------------------------------|
| 42473 | HEADLESS PIN (H) (2) 1X2-3/8 | 88670 | BLT HEX 1-8NCX5-1/2 5Z |
| 42484 | 1/4 X 2-1/4 ROLL PIN | 89075 | NUT NYLON LOCK 1-8NC 5Z |
| 48523 | WING LIFT BUSHING | 235122 | WING REST FLAT |
| 88110 | NUT HEX 3/4-10NC 5Z | 235158 | LIFT BRACKET - LEFT |
| 88130 | WSHR HLK 3/4ID(13/16ACT) Z | 235766 | 5800 CP 4TH HINGE |
| 88196 | WSHR FLAT 1(1-1/16X2-1/2ACT) Z | 237773 | LONG WING LIFT STRAP 5800 |
| 88393 | BLT HEX 1-8NCX2-1/2 5Z | 237774 | LIFT BRACKET - RIGHT |
| 88399 | BLT HEX 1-8NCX3 5Z | 237775 | CP LIFT LINK |
| 88404 | BLT HEX 3/4-10NCX2-1/2 5Z | 350976 | 12FT 5800 CP WING-LEFT-2012 |
| 88447 | BLT HEX 1-8NCX3-1/2 5Z | 350979 | 12FT 5800 CP WING-RIGHT-2012 |
| 88580 | BLT HEX 1-8NCX4-1/2 5Z | 51229F | CYL HYD 4X30 FGS #A519CY02 |

WING AXLE COMPONENTS



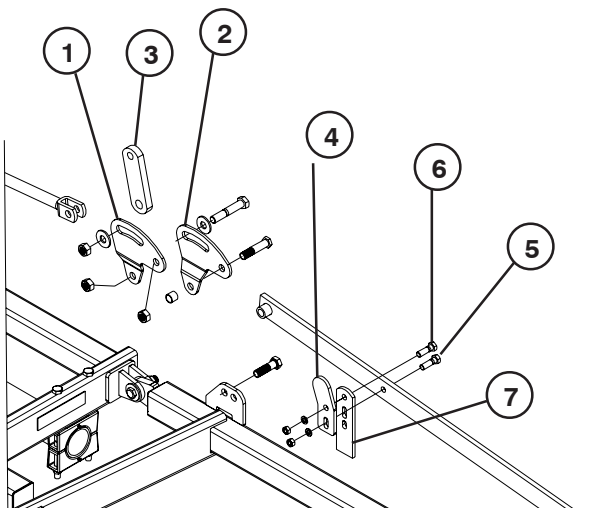
| PART NO. | DESCRIPTION | PART NO. | DESCRIPTION |
|----------|-----------------------------------|----------|--------------------------------------|
| 14131 | 2IN HUB & SPINDLE (LG7830026) BLK | 88602 | WSHR FLAT 1-1/4(1-3/8 X 3ACT) Z |
| 34132 | AXLE CLAMP ASSEMBLY (RED) | 88622 | NUT JAM 1-1/4-7NC 5Z |
| 42484 | PIN ROLL 1/4 X 2-1/4 Z | 89075 | NUT NLK 1-8NC 5Z |
| 68033 | HEADLESS PIN(2) 1X6.38 | 89356 | BLT HEX 3/4-10NC X 14 5Z |
| 68034 | HEADLESS PIN(2) 1-1/4X3.38 | 221714 | HEADLESS PIN(2) 1X4.00 |
| 88110 | NUT HEX 3/4-10NC 5Z | 222338 | HEADLESS PIN(2) 1X4-1/8 |
| 88130 | WSHR HLK 3/4ID(13/16ACT) Z | 233283 | LEFT INNER WING AXLE ASSY - 5850 |
| 88196 | WSHR FLAT 1(1-1/16 X 2-1/2ACT) Z | 233340 | RIGHT OUTER WING AXLE ASSY - 5850 |
| 88264 | BLT HEX 1-8NC X 6 5Z | 233351 | WING MAST TUBE 5800 |
| 88272 | BLT HEX 3/4-10NC X 4 5Z | 234895 | CYLINDER END PLATE |
| 88304 | NUT 2POSLK 1/2-20NF 5Z | 236377 | ADJUST LINK |
| 88335 | BLT HEX 3/4-10NC X 7 5Z | 236383 | WING ADJUST TUBE 5SEC / 5850 |
| 88349 | BLT HEX 1-1/4-7NC X 6-1/2 5Z | 246368 | BUSHING (ZINC) |
| 88356 | NUT 2POSLK 3/4-10NC 5Z | 350969 | WING ADJUST STRAP |
| 88429 | BLT HEX 1/2-20NF X 3-1/4 5Z | 67388F1 | HYD CYL 4X10.8 TBP ILP FGS #A519CY25 |
| 88447 | BLT HEX 1-8NC X 3-1/2 5Z | | |

3' OUTER WING



| ITEM | PART NO. | DESCRIPTION |
|------|----------|--------------------------------|
| 1 | 244573 | 3FT CP WING - LEFT (SHOWN) |
| | 244566 | 3FT CP WING - RIGHT |
| 2 | 14408 | HEADLESS PIN 1x6-13/16 |
| 3 | 88432 | PIN ROLL 5/16DIAx2 |
| 4 | 51241F | HYD CYL 3x24 (SEE PAGE 23) |
| 5 | 233267 | 1' STUB GRP W/MTG HDW |
| 6 | 67688F1 | 4x10.8 HYD CYL (SEE PAGE 25) |
| 7 | 88196 | WSHR FLAT 1(1-1/16X2-1/2ACT) Z |
| 8 | 42484 | 1/4 X 2-1/4 ROLL PIN |
| 9 | 221344 | HEADLESS PIN 1X5.12 |
| 10 | 42473 | HEADLESS PIN 1X2-3/8 |

NOTE: DETAILS TO ITEM 5 (233267) SHOWN ON PAGE 10.

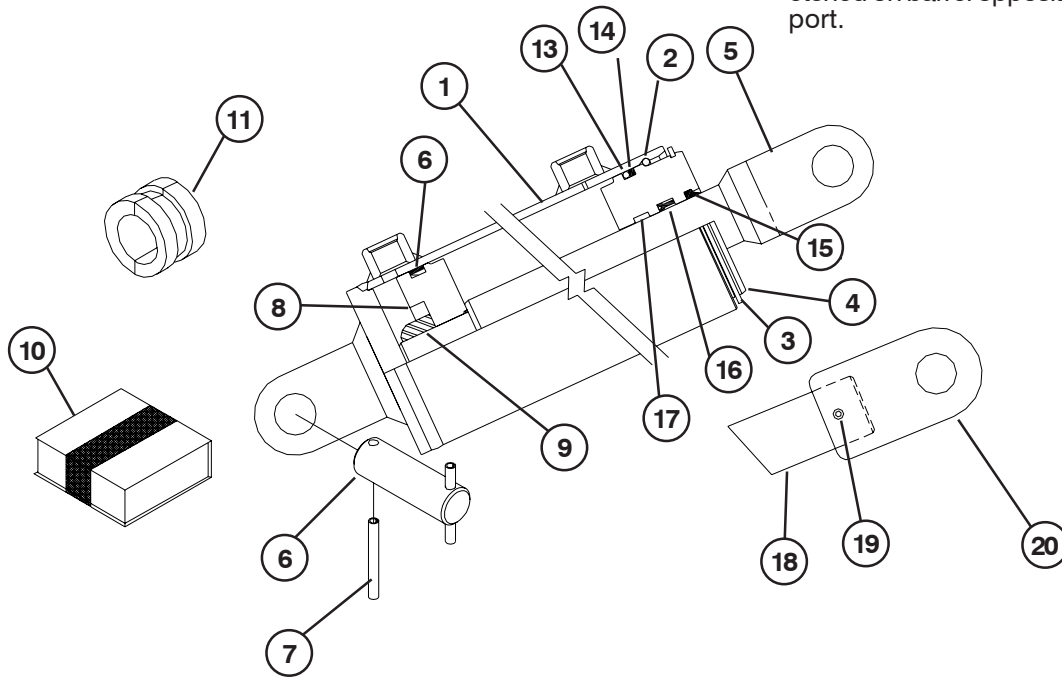


ITEMS 1-5 ARE REQUIRED FOR 3FT WINGS WHEN USED WITH 12FT INNER WINGS. PARTS ARE INCLUDED WITH THE 3FT ADD-ON KITS FOR 12FT INNER WINGS.

| ITEM | PART NO. | DESCRIPTION |
|------|----------|---------------------------|
| 1 | 240586 | LIFT BRACKET - LEFT |
| 2 | 240585 | LIFT BRACKET - RIGHT |
| 3 | 48522 | WING LIFT LINK |
| 4 | 240583 | RESTRICTED FOLD LINK |
| 5 | 88841 | BLT HEX 3/4-10NCX2-3/4 5Z |
| 6 | 88404 | BLT HEX 3/4-10NCX2-1/2 5Z |
| 7 | 235122 | WING REST FLAT |

WING FOLD CYLINDERS

Vendor/WIL-RICH P/N Info is laser etched on barrel opposite the base port.



ITEMS NOTED AS "NS" ARE NOT AVAILABLE, CHECK WITH WIL-RICH SERVICE PARTS FOR OTHER PART AVAILABILITY.

| COLUMN | WIL-RICH PART NO. | SIZE | ROD DIA. | PIN DIA. |
|--------|-------------------|----------|----------|----------|
| A | 51242F | 3 x 30 | 1-1/2" | 1" |
| B | 51235F | 3.5 x 24 | 1-1/2" | 1" |
| C | 51226F | 4 x 24 | 1-1/2" | 1" |
| D | 51229F | 4 x 30 | 1-1/2" | 1" |
| E | 12062F | 5 x 24 | 2" | 1" |
| F | 20966F | 5 x 30 | 2" | 1" |
| G | 51241F | 3 x 24 | 1-1/2" | 1" |

| ITEM | DESCRIPTION | REQ. | A | B | C | D | E | F | G |
|------|---------------------------------|------|------------------|--------|--------|--------|--------|--------|--------|
| 1 | Barrel | NS | 233709 | 233812 | 233818 | 233716 | 233817 | 233723 | 233803 |
| 2 | Retainer Ring | 1 | 233711 | 233814 | 233718 | 233718 | 233724 | 233724 | 233711 |
| 3 | Ext. Snap Ring | 1 | 233712 | 233816 | 233720 | 233720 | 233727 | 233727 | 233712 |
| 4 | Snap Ring Head | NS | 233713 | 233815 | 233719 | 233719 | 233726 | 233726 | 233713 |
| 5 | Rod | 1 | 233710 | 233813 | 233813 | 233717 | 233819 | 233725 | |
| 6 | Clevis Pin | 2 | 42473 | 42473 | 42473 | 42473 | 42473 | 42473 | 42473 |
| 7 | Roll Pin 1/4x2-1/4 | 2 | 42484 | 42484 | 42484 | 42484 | 42484 | 42484 | 42488 |
| 8 | Piston | NS | 33714 | 233811 | 233715 | 233715 | 233722 | 233722 | 233714 |
| 9 | Lock Nut | 1 | 233700 | 233700 | 233700 | 233700 | 233721 | 233721 | 233700 |
| 10 | Seal kit (Includes items 12-17) | 1 | 233729 | 233810 | 233730 | 233730 | 233731 | 233731 | 233729 |
| 11 | Stop collar | 1 | 15113 | 15113 | 15113 | 15113 | 15116 | 15116 | 15113 |
| 12 | Piston Seal | 1 | In seal kit only | | | | | | |
| 13 | Head O-Ring | 1 | In seal kit only | | | | | | |
| 14 | Head Backup Ring | 1 | In seal kit only | | | | | | |
| 15 | Rod Wiper | 1 | In seal kit only | | | | | | |
| 16 | Rod Cup Seal | 1 | In seal kit only | | | | | | |
| 17 | Wear Ring | 1 | In seal kit only | | | | | | |
| 18 | Rod (51241F) | 1 | | | | | | | 233804 |
| 19 | Set Screw (51241F) | 1 | | | | | | | 88706 |
| 20 | Clevis (51241F) | 1 | | | | | | | 55661 |

CHECK THE WIL-RICH PART NO. ON THE CYLINDER WHEN ORDERING REQUIRED PARTS

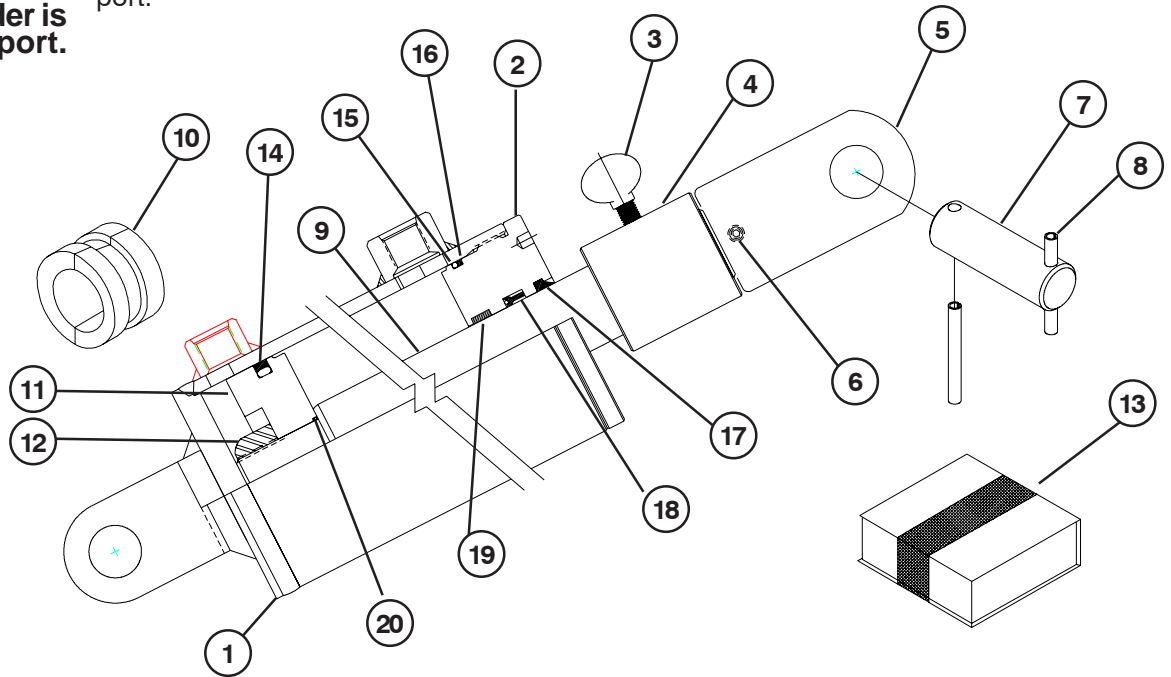
F & F1 SERIES CYLINDERS

MAIN LIFT TOP BYPASS CYLINDER

Vendor/WIL-RICH P/N Info is laser etched on barrel opposite the base port.

SIDE PORT AND IN LINE PORT (SHOWN) CYLINDERS REQUIRE THE SAME SERVICEABLE COMPONENTS. ITEMS NOTED AS "NS" ARE NOT AVAILABLE.

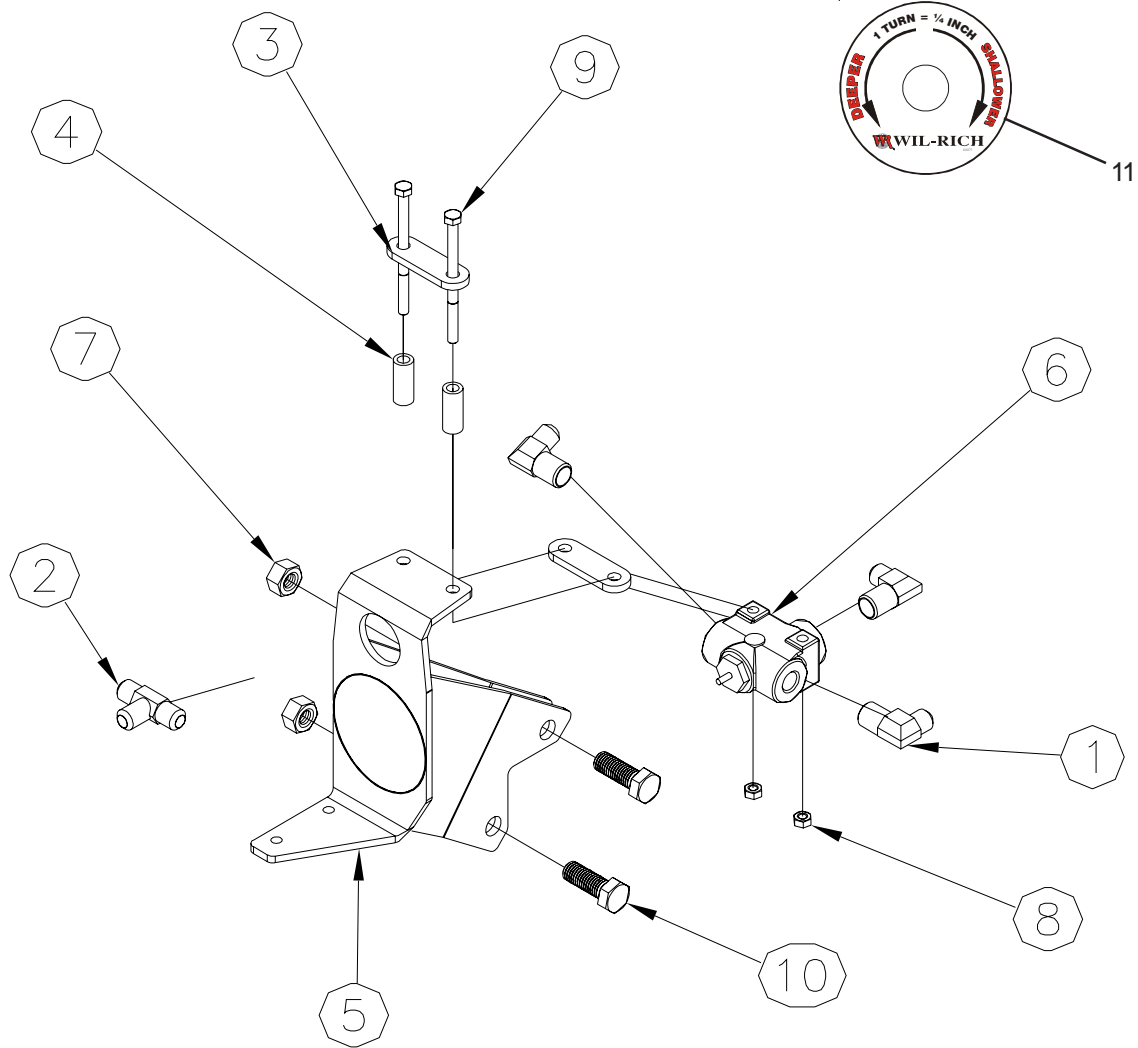
Ask if cylinder is side or top port.



| COLUMN | PART #/DESC | SIZE-PORTS | ROD DIA. | PIN DIA. |
|--------|-------------|----------------|----------|----------|
| A | 67687F1 | 4x9.3-SIDE | 1-1/2" | 1" |
| B | 240433F | 4x10.8-SIDE | 1-1/2" | 1" |
| C | 240432F | 4x12.6-SIDE | 1-1/2" | 1" |
| A | 220761F | 4x9.3-IN LINE | 1-1/2" | 1" |
| B | 67688F1 | 4x10.8-IN LINE | 1-1/2" | 1" |
| C | 67683F1 | 4x12.6-IN LINE | 1-1/2" | 1" |

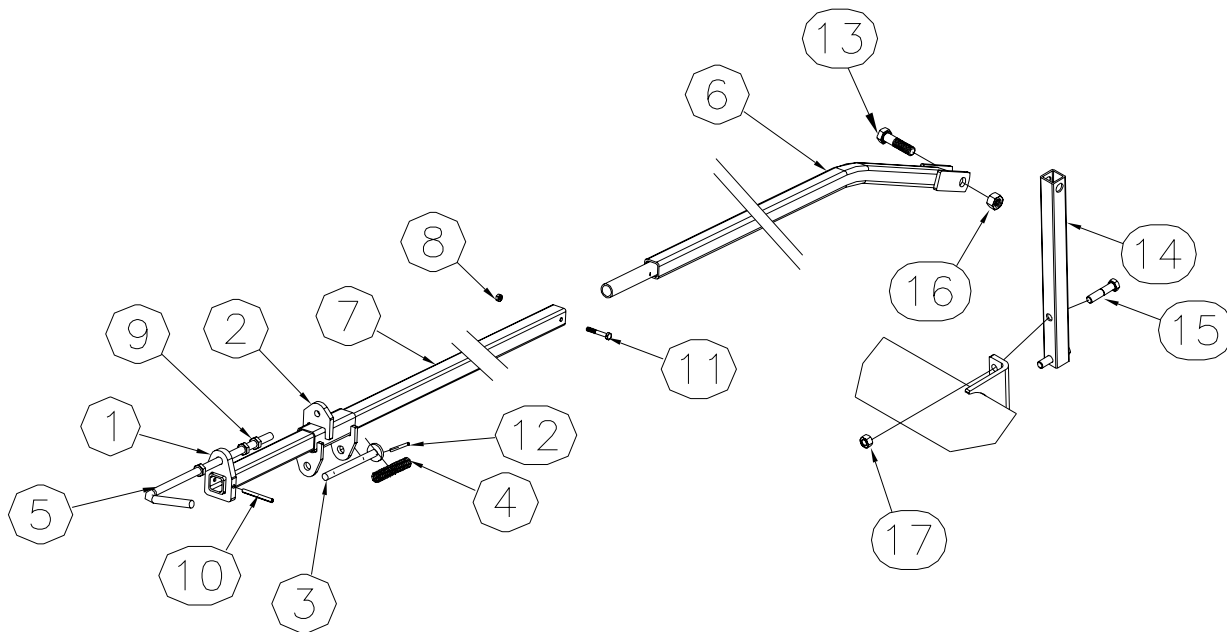
| ITEM | DESCRIPTION | REQ. | A | B | C |
|------|------------------------|------|------------------|--------|------------------|
| 1 | Barrel | NS | 239095 | 239096 | 239098 |
| 2 | Internal Head | NS | 233704 | 233704 | 233704 |
| 3 | Thumb Screw | 1 | 88387 | 88387 | 88387 |
| 4 | Screw Collar | 1 | 55665 | 55665 | 55665 |
| 5 | Rod End Clevis | 1 | 67657 | 67657 | 67657 |
| 6 | Set Screw | 1 | 88706 | 88706 | 88706 |
| 7 | HDLS Pin 1x2-3/8 | 2 | 42473 | 42473 | 42473 |
| 8 | Roll Pin 1/4x3.12 | 4 | 42484 | 42484 | 42484 |
| 9 | Cylinder Rod | 1 | 233703 | 233706 | 233708 |
| 10 | Stop Collars | 1 | 15113 | 15113 | 15113 |
| 11 | Piston | NS | 239094 | 239094 | 239094 |
| 12 | Rod Nut | 1 | 233700 | 233700 | 233700 |
| 13 | Seal Kit | 1 | 239904 | 239904 | 239904 |
| | (INCLUDES ITEMS 14-20) | | | | |
| 14 | CHEM-CAST SEAL | 1 | IN SEAL KIT ONLY | | |
| 15 | HEAD O-RING | 1 | IN SEAL KIT ONLY | | |
| 16 | HEAD BACK-UP RING | 1 | IN SEAL KIT ONLY | | 220061 915402 |
| 17 | ROD WIPER | 1 | IN SEAL KIT ONLY | | |
| 18 | LOADED U-CUP | 1 | IN SEAL KIT ONLY | | |
| 19 | WEAR RING | 1 | IN SEAL KIT ONLY | | |
| 20 | PISTON O-RING | 1 | IN SEAL KIT ONLY | | |

SINGLE POINT VALVE ASSEMBLY



| ITEM | PART NO. | DESCRIPTION | QTY |
|------|----------|----------------------------|-----|
| 1 | 13236 | ELB 8MJ X 8MPT | 3 |
| 2 | 13238 | TEE 8MJ X 8MJ X 8MJ | 1 |
| 3 | 238636 | VALVE SPACER (ZINC) | 2 |
| 4 | 238637 | SPACER TUBE (ZINC) | 2 |
| 5 | 238638 | SINGLE POINT BRACKET | 1 |
| 6 | 51975 | DCV ASSEMBLY | 1 |
| 7 | 88369 | NUT 2POSLK 5/8-11NC 5Z | 2 |
| 8 | 88540 | NUT 2POSLK 5/16-18NC 5 | 2 |
| 9 | 88812 | BLT HEX 5/16-18NCX4-1/2 2Z | 2 |
| 10 | 88838 | BLT HEX 5/8-11NCX1-3/4 5Z | 2 |
| 11 | 69077 | DEPTH ADJUSTMENT DECAL | 1 |

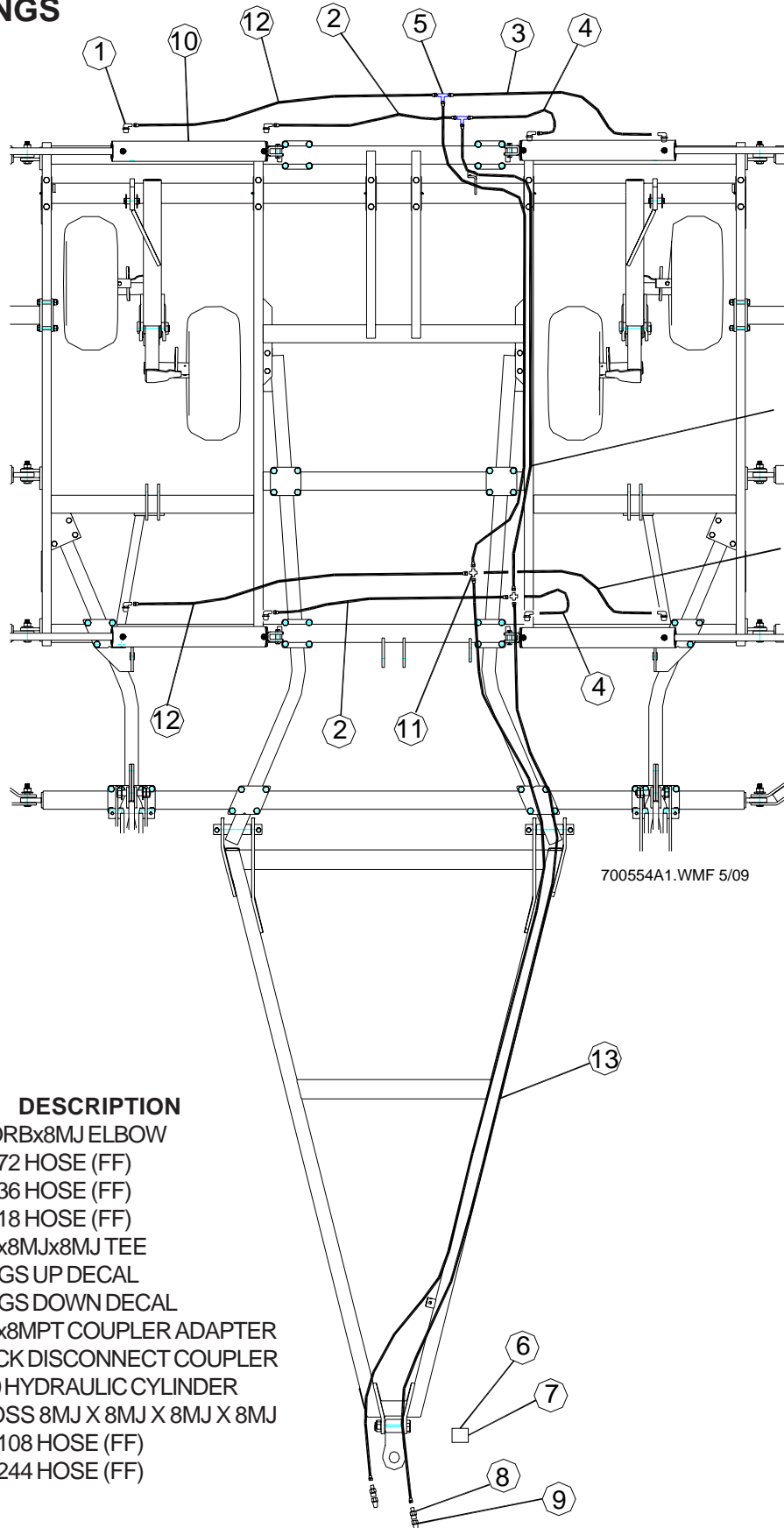
SINGLE POINT TUBE ASSEMBLY



| ITEM | PART NO. | DESCRIPTION | QTY |
|------|----------|-----------------------------|-----|
| 1 | 222107 | ADJUST EAR | 1 |
| 2 | 222111 | SLIDE ADJUST | 1 |
| 3 | 222180 | SPRING PIN (ZINC) | 1 |
| 4 | 23200 | SPRING | 1 |
| 5 | 238657 | ADJUST CRANK - LONG | 1 |
| 6 | 243062 | CP SINGLE POINT TUBE | 1 |
| 7 | 243063 | SINGLE POINT TUBE | 1 |
| 8 | 88237 | NUT 2POSLK 1/4-20NC 5Z | 1 |
| 9 | 88561 | NUT JAM 1/2-13NC 5Z | 3 |
| 10 | 88767 | PIN ROLL 1/4DIA X 2-1/2 Z | 1 |
| 11 | 88997 | BLT HEX 1/4-20NC X 1-3/4 5Z | 1 |
| 12 | 89078 | PIN ROLL 3/16 X 1-3/4 Z | 1 |
| 13 | 88409 | BLT HEX 5/8-11NC X 2-1/2 5Z | 1 |
| 14 | 239038 | SINGLE POINT TUBE | 1 |
| 15 | 88825 | BLT HEX 1/2-13NC X 2-1/4 5Z | 2 |
| 16 | 88369 | NUT 2POSLK 5/8-11NC 5Z | 1 |
| 17 | 88363 | NUT 2POSLK 1/2-13NC 5Z | 2 |

5850 WING FOLD HYDRAULICS

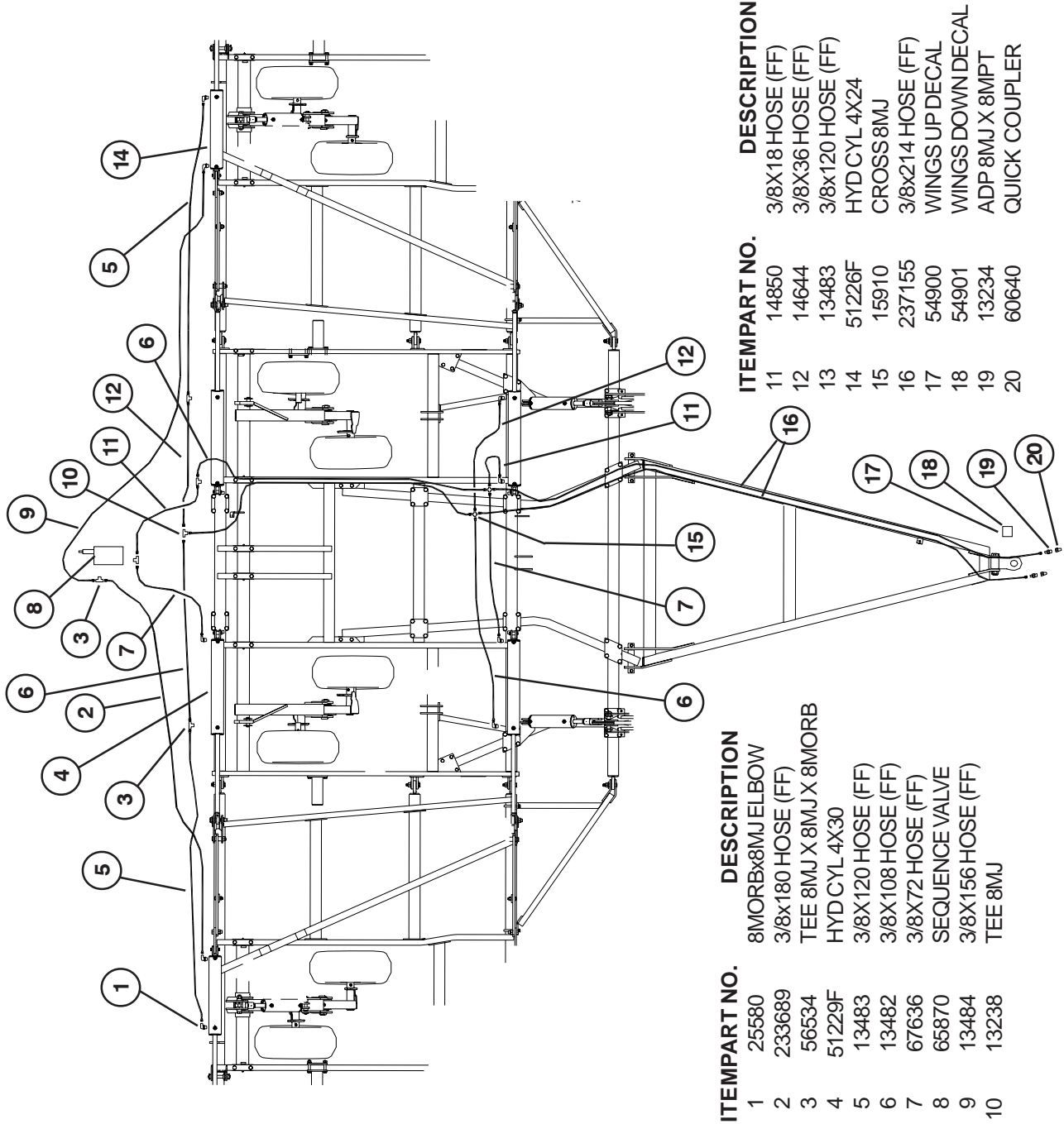
9FT & 12 FT INNER WINGS
NO OUTER WINGS



| ITEM | PART NO. | DESCRIPTION |
|------|----------|-----------------------------|
| 1 | 25580 | 8MORBx8MJ ELBOW |
| 2 | 67636 | 3/8x72 HOSE (FF) |
| 3 | 14644 | 3/8x36 HOSE (FF) |
| 4 | 14850 | 3/8x18 HOSE (FF) |
| 5 | 13238 | 8MJx8MJx8MJ TEE |
| 6 | 54900 | WINGS UP DECAL |
| 7 | 54901 | WINGS DOWN DECAL |
| 8 | 13234 | 8MJx8MPT COUPLER ADAPTER |
| 9 | 60640 | QUICK DISCONNECT COUPLER |
| 10 | 51229F | 4x30 HYDRAULIC CYLINDER |
| 11 | 15910 | CROSS 8MJ X 8MJ X 8MJ X 8MJ |
| 12 | 13482 | 3/8x108 HOSE (FF) |
| 13 | 237155 | 3/8x244 HOSE (FF) |

5850 WING FOLD HYDRAULICS

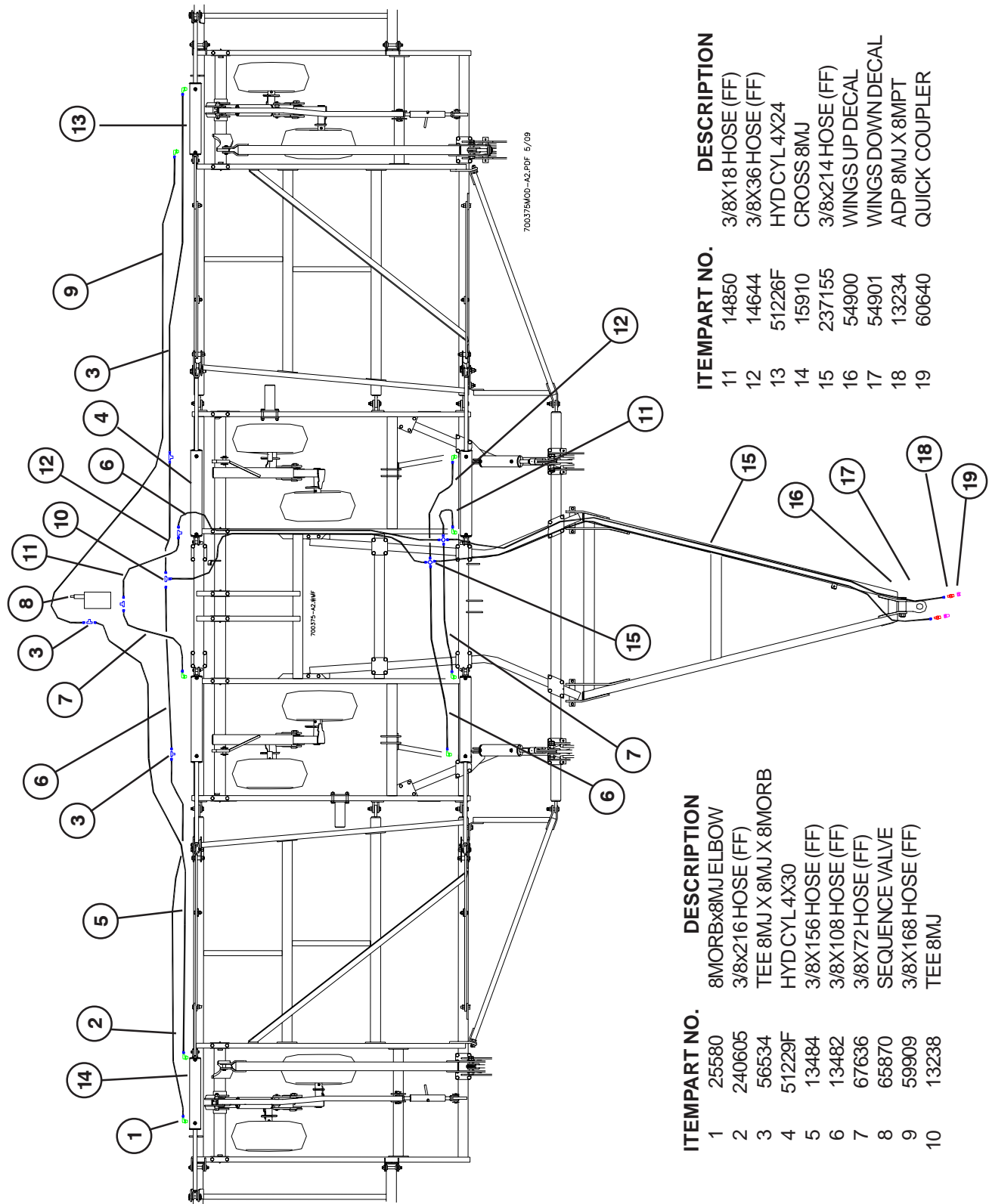
9' INNER WINGS W/3FT OUTER WING



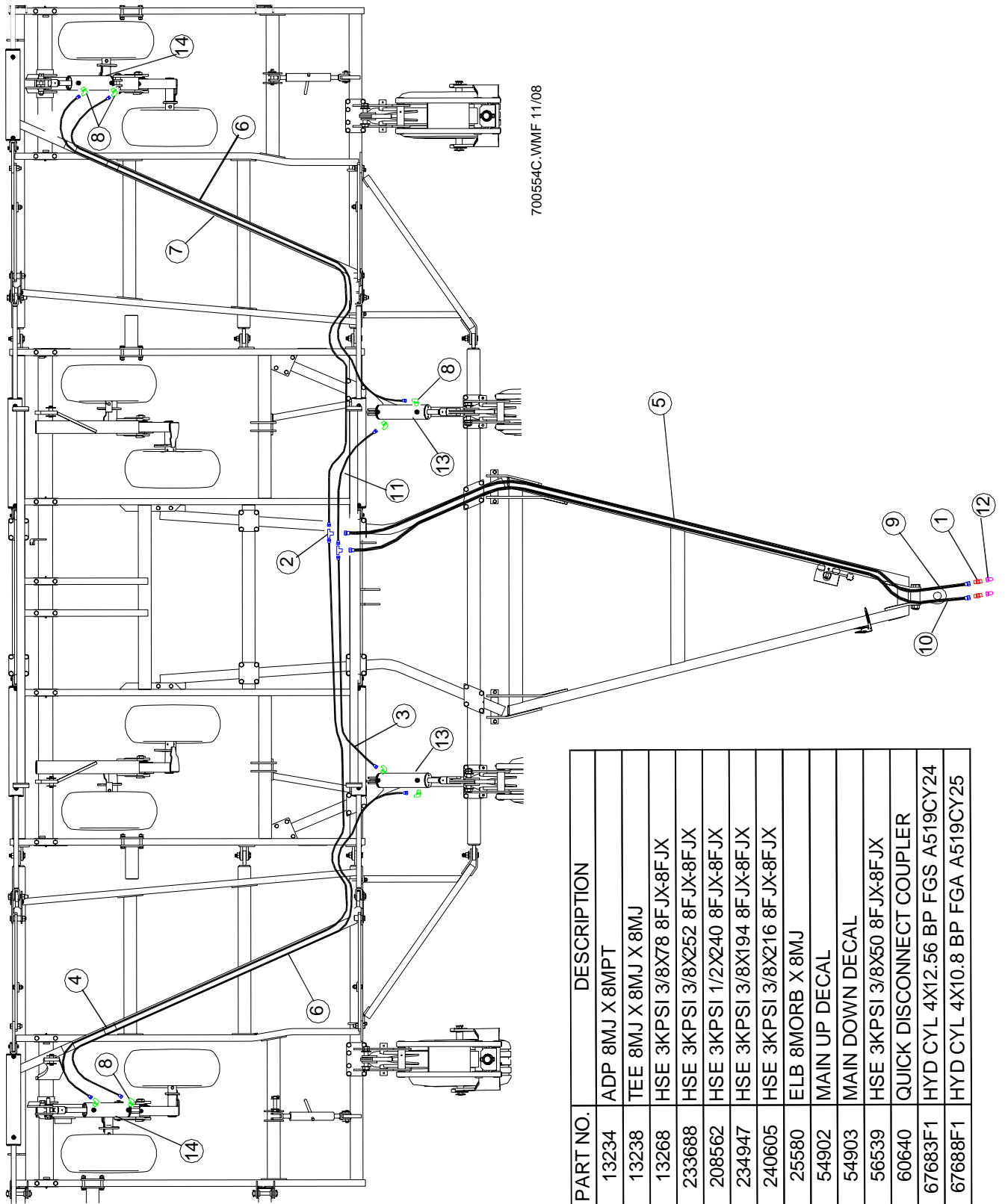
| ITEMPART NO. | DESCRIPTION | ITEMPART NO. | DESCRIPTION |
|--------------|-----------------------------|--------------|--------------------------|
| 1 | 25580 8MORBx8MJ ELBOW | 11 | 14850 3/8X18 HOSE (FF) |
| 2 | 233689 3/8x180 HOSE (FF) | 12 | 14644 3/8X36 HOSE (FF) |
| 3 | 56534 TEE 8MJ X 8MJ X 8MORB | 13 | 13483 3/8x120 HOSE (FF) |
| 4 | 51229F HYD CYL 4X30 | 14 | 51226F HYD CYL 4X24 |
| 5 | 13483 3/8X120 HOSE (FF) | 15 | 15910 CROSS 8MJ |
| 6 | 13482 3/8X108 HOSE (FF) | 16 | 237155 3/8x214 HOSE (FF) |
| 7 | 67636 3/8X72 HOSE (FF) | 17 | 54900 WINGS UP DECAL |
| 8 | 65870 SEQUENCE VALVE | 18 | 54901 WINGS DOWN DECAL |
| 9 | 13484 3/8X156 HOSE (FF) | 19 | 13234 ADP 8MJ X 8MPT |
| 10 | 13238 TEE 8MJ | 20 | 60640 QUICK COUPLER |

5850 WING FOLD HYDRAULICS

12' INNER WINGS W/3FT OUTER WING



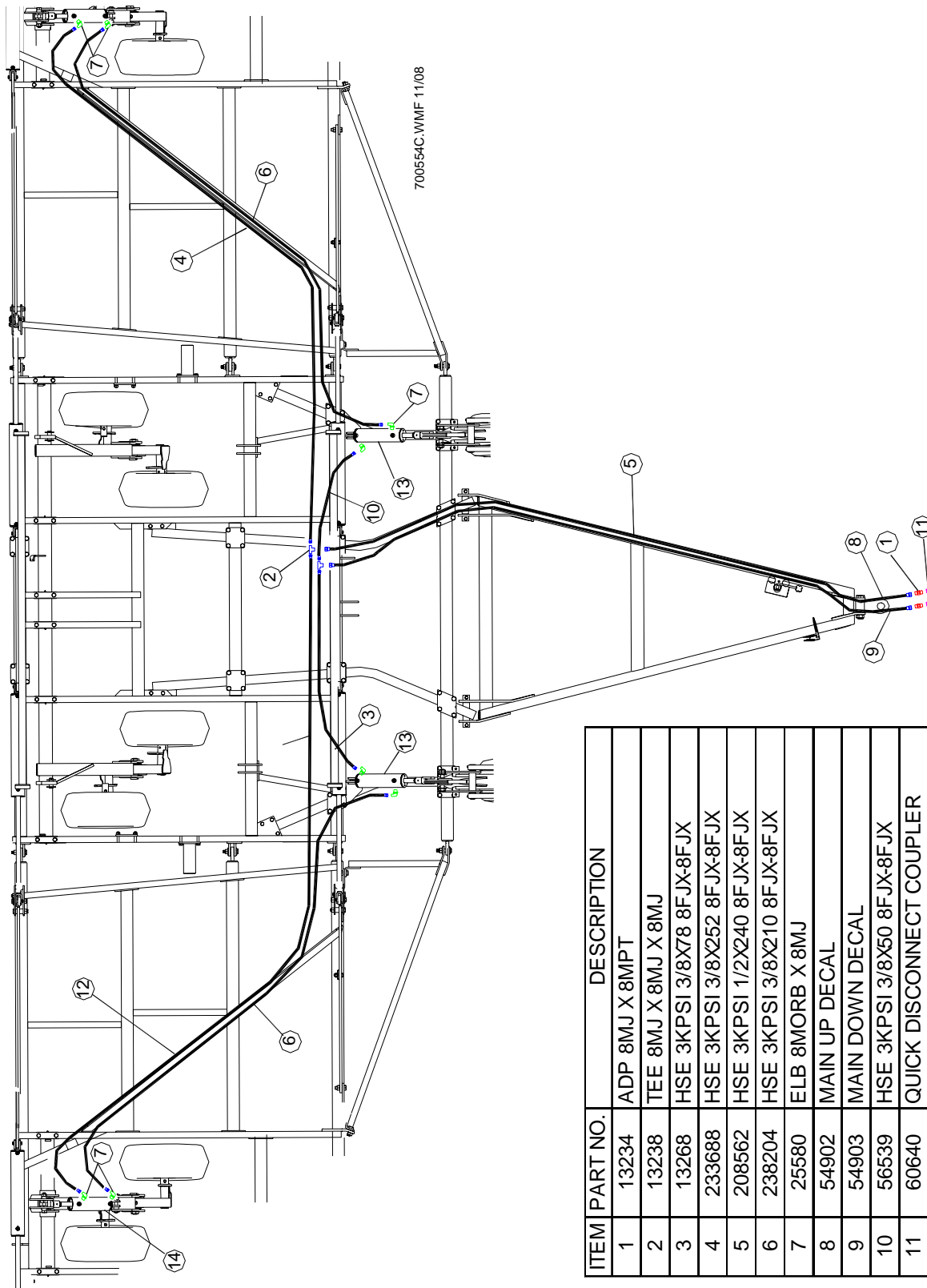
5850 MAIN LIFT HYDRAULICS - 31FT BASE



700554C.WMF 11/08

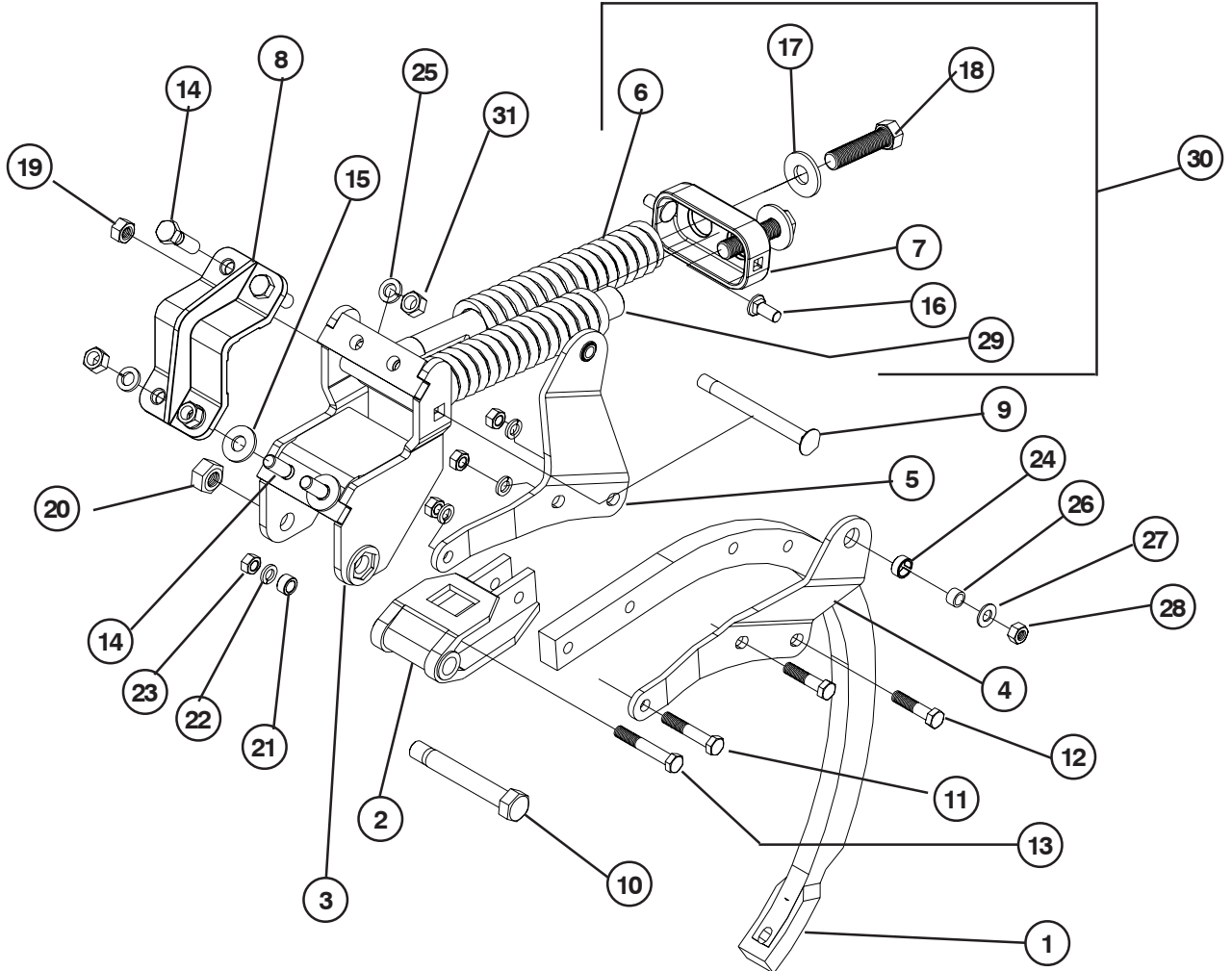
| ITEM | PART NO. | DESCRIPTION |
|------|----------|---------------------------------|
| 1 | 13234 | ADP 8MJ X 8MPT |
| 2 | 13238 | TEE 8MJ X 8MJ X 8MJ |
| 3 | 13268 | HSE 3KPSI 3/8X78 8FJX-8FJX |
| 4 | 233688 | HSE 3KPSI 3/8X252 8FJX-8FJX |
| 5 | 208562 | HSE 3KPSI 1/2X240 8FJX-8FJX |
| 6 | 234947 | HSE 3KPSI 3/8X194 8FJX-8FJX |
| 7 | 240605 | HSE 3KPSI 3/8X216 8FJX-8FJX |
| 8 | 25580 | ELB 8MORB X 8MJ |
| 9 | 54902 | MAIN UP DECAL |
| 10 | 54903 | MAIN DOWN DECAL |
| 11 | 56539 | HSE 3KPSI 3/8X50 8FJX-8FJX |
| 12 | 60640 | QUICK DISCONNECT COUPLER |
| 13 | 67683F1 | HYD CYL 4X12.56 BP FGS A519CY24 |
| 14 | 67688F1 | HYD CYL 4X10.8 BP FGA A519CY25 |

5850 MAIN LIFT HYDRAULICS - 37FT BASE



| ITEM | PART NO. | DESCRIPTION |
|------|----------|---------------------------------|
| 1 | 13234 | ADP 8MJ X 8MPT |
| 2 | 13238 | TEE 8MJ X 8MJ X 8MJ |
| 3 | 13268 | HSE 3KPSI 3/8X78 8FJX-8FJX |
| 4 | 233688 | HSE 3KPSI 3/8X252 8FJX-8FJX |
| 5 | 208562 | HSE 3KPSI 1/2X240 8FJX-8FJX |
| 6 | 238204 | HSE 3KPSI 3/8X210 8FJX-8FJX |
| 7 | 25580 | ELB 8MORB X 8MJ |
| 8 | 54902 | MAIN UP DECAL |
| 9 | 54903 | MAIN DOWN DECAL |
| 10 | 56539 | HSE 3KPSI 3/8X50 8FJX-8FJX |
| 11 | 60640 | QUICK DISCONNECT COUPLER |
| 12 | 67576 | HSE 3KPSI 3/8X276 8FJX-8FJX |
| 13 | 67683F1 | HYD CYL 4X12.56 BP FGS A519CY24 |
| 14 | 67688F1 | HYD CYL 4X10.8 BP FGA A519CY25 |

1000 LB CP SHANK ASSEMBLY - CORNER MOUNT



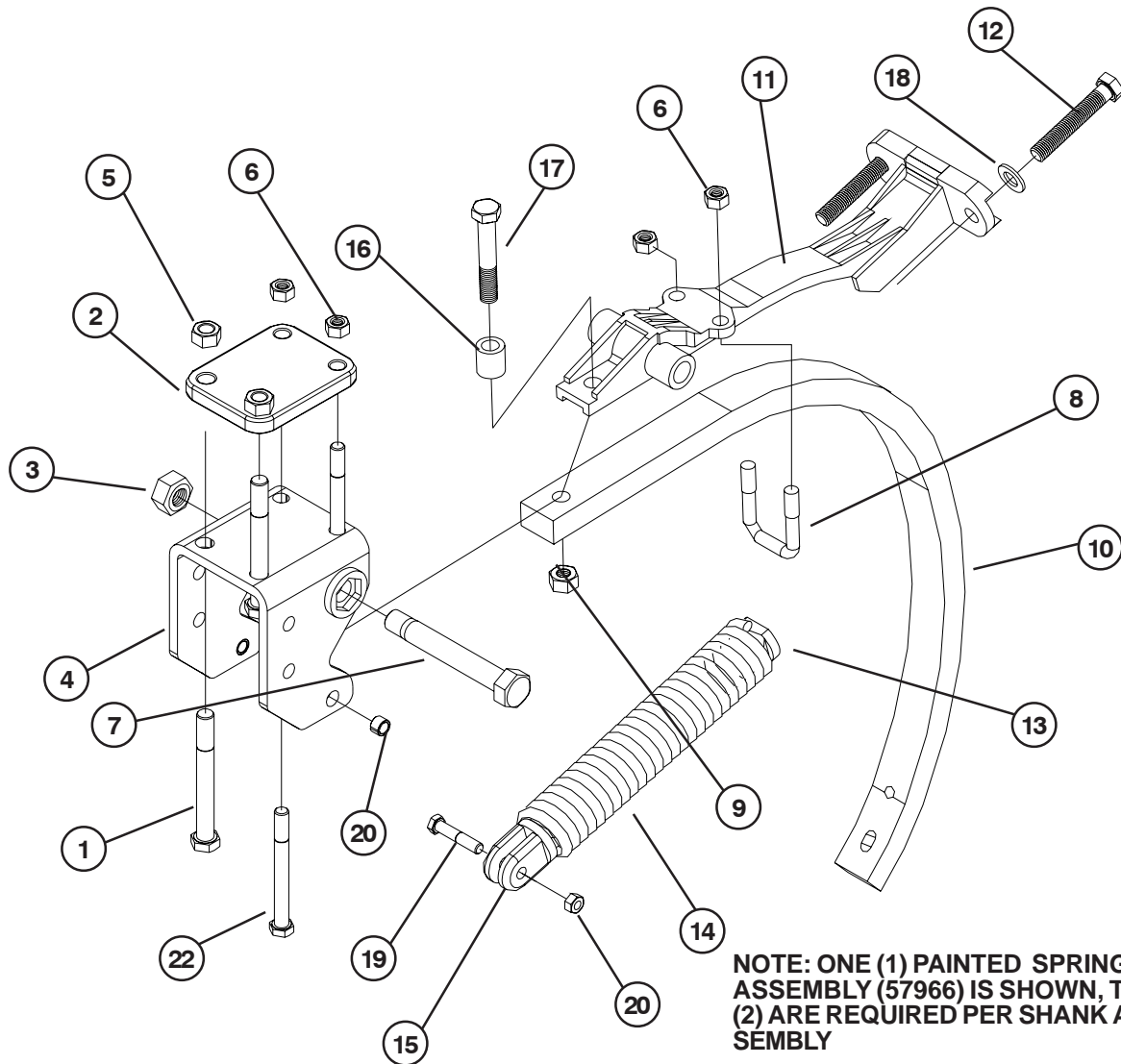
235244 - COMPLETE SHANK ASSEMBLY

221240.PLT

| ITEM PART NO. | DESCRIPTION | ITEM PART NO. | DESCRIPTION |
|---------------|-----------------------------------|---------------|---------------------------------------|
| 1 | 64977 SHANK (GRAY) | 16 | 89154 5/8NCx1-1/2SHTNCK CARRIAGE BOLT |
| 2 | 67196 CAST SHANK HOLDER | 17 | 88196 WSHR FLAT 1(1-1/16x2-1/2ACT) |
| 3 | 235773 CHISEL PLOW SHANK HOLDER | 18 | 66226 1NCx4 GR2 HVY HEX BLT W/NYLK |
| 4 | 221194 SIDE PLATE LH | 19 | 88356 NUT 2POSLK 3/4NC |
| 5 | 221195 SIDE PLATE RH | 20 | 88169 NUT 2POSLK 1NF |
| 6 | 23378 COMPRESSION SPRING (GRAY) | 21 | 56932 9/16 x 1 SPACER |
| 7 | 65373C SPRING RETAINER | 22 | 88129 WSHR HLK 5/8ID(11/16ACT) |
| 8 | 235768 CAST CORNER CAP (GRAY) | 23 | 88126 NUT HEX 5/8NC |
| 9 | 69030 3/4NC-2AGR8 CARRIAGE BOLT | 24 | 64967 SPRING TENSION BUSHING |
| 10 | 14987 PIVOT BOLT (CP SHANK) | 25 | 88130 WSHR HLK 3/4ID(13/16ACT) Z |
| 11 | 88945 5/8NCx4 GR GR8 BOLT | 26 | 64978 BUSHING |
| 12 | 88949 5/8NCx2-3/4 GR8 BOLT | 27 | 88630 WSHR FLT 5/8SAE(21/32X1-5/16) |
| 13 | 88292 5/8NCx3-1/2 GR5 BOLT | 28 | 88845 NUT TOP LK 5/8NC |
| 14 | 89433 3/4NCX2-1/4 GR5 BOLT | 29 | 222037 SPRING BRACKET |
| 15 | 88131 WSHR FLAT 3/4(13/16X2ACT) Z | 30 | 223527 COMPRESSION SPRING PACKAGE |

COMPARE THE SHANK COMPONENTS TO DEFINE SERVICE PARTS REQUIRED

650 LB CP SHANK ASSEMBLY - CURRENT

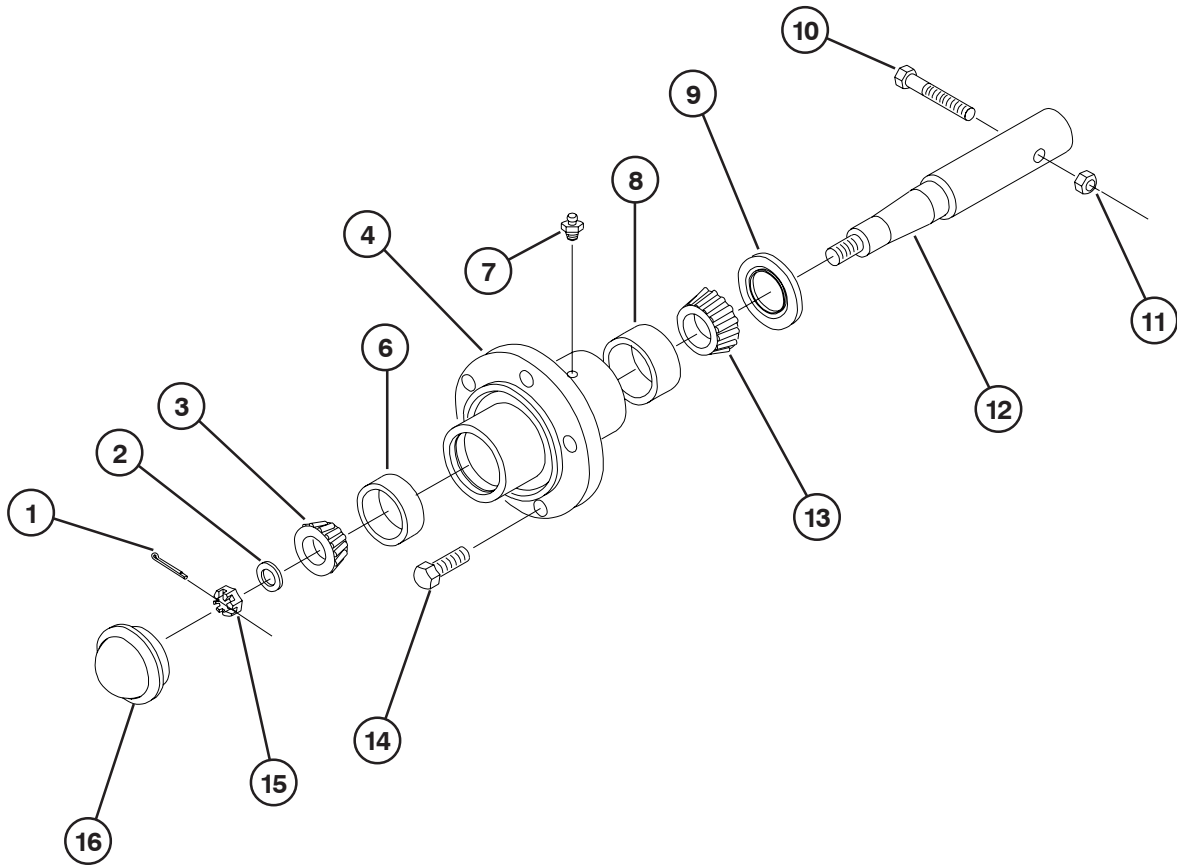


NOTE: ONE (1) PAINTED SPRING ASSEMBLY (57966) IS SHOWN, TWO (2) ARE REQUIRED PER SHANK ASSEMBLY

| ITEMPART NO | DESCRIPTION | ITEMPART NO | DESCRIPTION |
|-------------|---|-------------|--|
| 240422 | 32" 54 Degree CP Shank Assembly | 11 | 62591 Ductile Pivot Arm |
| 57966 | 16.12 Spring Assembly (32") (Includes Items 13-15) | 12 | 10210 Adjustment Bolt |
| 1 | 89385 BLT HEX 3/4-16NFX6-1/2 8YZ | 13 | 57948 Cast Spring Plug |
| 2 | 234084 CASTTOPPLATE (GRAY) | 14 | 57961 13-15/16 Extension Spring (32") |
| 3 | 88169 1NF Lock Nut | 15 | 57946 Spring Clevis |
| 4 | 240420 SHANK HOLDER FRAME BRACKET | 16 | 62639 Stop Collar |
| 5 | 89386 NUT NYL 3/4-16NF 8YZ | 17 | 88421 3/4NCx4-1/2 GR5 Bolt |
| 6 | 88369 NUT 2POSLK 5/8-11NC 5Z | 18 | 88548 3/4 SAE Flat Washer(13/16x1-1/2) |
| 7 | 14987 Pivot Bolt | 19 | 58032 1/2NCx2-1/2 HDN Bolt |
| 8 | 88441 5/8NCx2x3-1/4 U-Bolt | 20 | 88621 1/2NC Nylock Nut |
| 9 | 88356 NUT 2POSLK 3/4-10NC 5Z | 21 | 56908 1/2 Spring Tension Bushing |
| 10 | 55485 32" 54 Degree CP Shank | 22 | 88933 BLT HEX 5/8-11NCX6 8YZ |

240421 - COMPLETE SHANK ASSY W/MOUNTING PLATE & HARDWARE

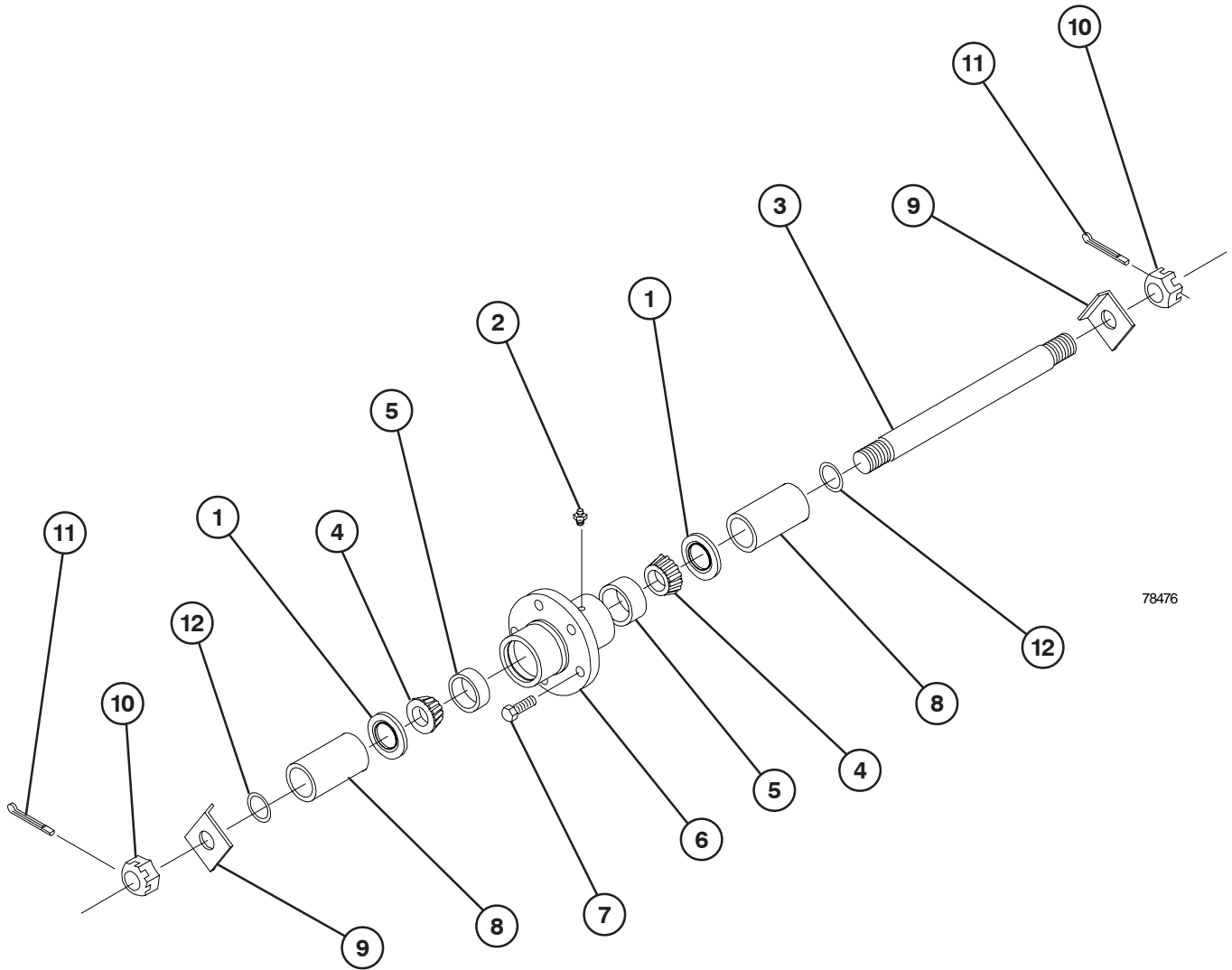
6 BOLT HUB WITH 2" SPINDLE



77836.PLT

| ITEM | PART NO. | DESCRIPTION |
|------|----------|---|
| | 14131 | 6 BOLT HUB & 2" SPINDLE ASSY (INCLUDES 1-4 & 9-16) |
| 1 | 88301 | PIN COT 3/16 DIA x 1-1/2 |
| 2 | 16094 | SPINDLE WASHER 7/8 ID |
| 3 | 10345 | BEARING CONE 1-1/4 ID (LM67048) |
| 4 | 24097 | 2 IN PRESSED HUB W/ CUPS |
| 6 | 10344 | BEARING CUP 2.328 OD (LM67010) |
| 7 | 88263 | FTG GRS 1/8 NPT 1610-BL (11/16") |
| 8 | 14249 | BEARING CUP 2.891 OD (LM501310) |
| 9 | 58546 | 2" TRIPLE LIP SEAL |
| 10 | 88429 | 1/2 NF x 3-1/4 GR5 BOLT |
| 11 | 88304 | NUT 2 POSLK 1/2 NF |
| 12 | 14251 | 2" AXLE SPINDLE |
| 13 | 14248 | BEARING CONE 1-5/8 ID (LM501349) |
| 14 | 88142 | WHEEL BOLT 1/2 NF x 1 (13/16 HEAD) |
| 15 | 88340 | NUT SLTD 7/8 NF |
| 16 | 11381 | DUST CAP |

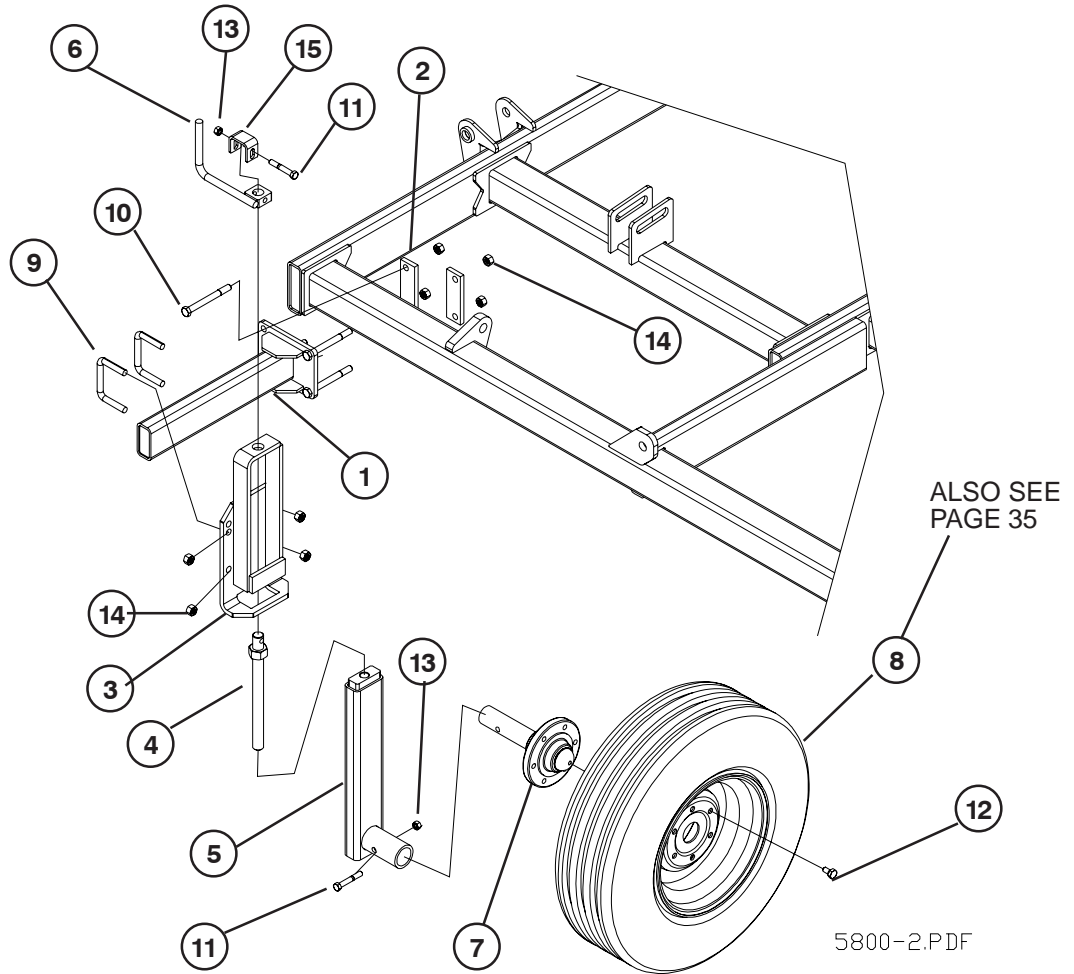
GAUGE WHEEL HUB & SPINDLE



78476

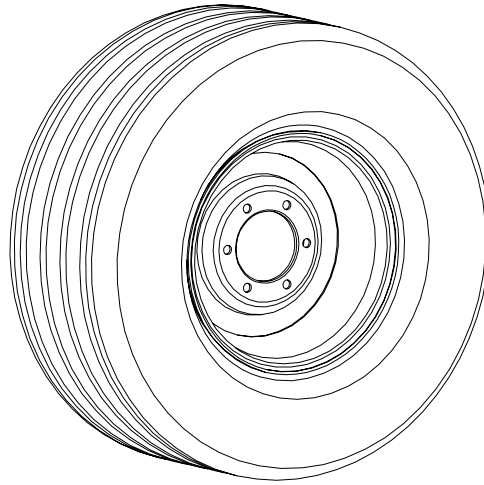
| ITEM | PART NO | DESCRIPTION | ITEM | PART NO | DESCRIPTION |
|------|---------|--|------|---------|---|
| | 55562 | YOKE HUB ASSEMBLY (22" SPINDLE) | 7 | 63831 | 9/16"NFx1-1/8" WHEEL BOLT |
| 1 | 208981 | 2" INTERNAL TRIPLE LIP SEAL | 8 | 62400 | 2"ODx6" SEALED SPINDLE TUBE MUST ORDER ITEM 12 WITH TUBE |
| 2 | 88263 | 1/8"NPT GREASE FITTING | 9 | 55150 | SPINDLE LOCK |
| 3 | 58204 | 1-1/2" DIAx22" SPINDLE | 10 | 88299 | 1"NF SLOTTED NUT |
| 4 | 54731 | BEARING CONE | 11 | 88133 | 3/16"x2" COTTER PIN |
| 5 | 16082 | BEARING CUP | 12 | 12456 | SHAFT SEAL O-RING (REQ. W/62400) |
| 6 | 62389 | 6-BOLT HUB W/CUPS (INCLUDES ITEM 5) REPLACE BY 54729 | | | |

FRONT MOUNT RIGID GAUGE WHEEL



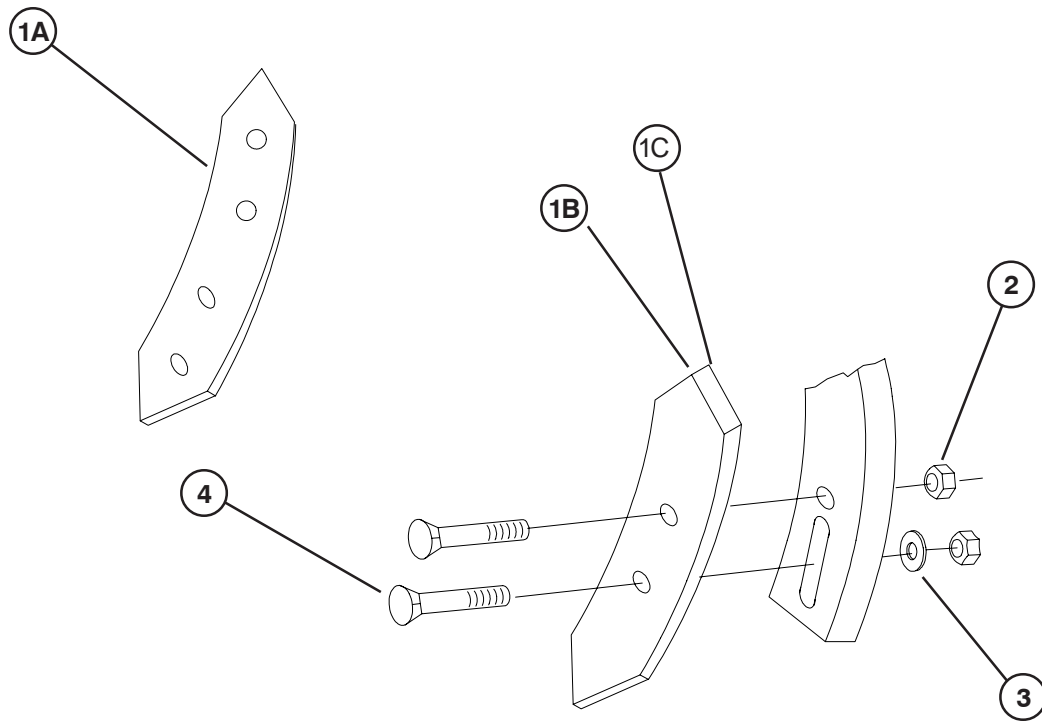
| ITEM | PART NO. | DESCRIPTION |
|------|----------|---|
| | 233256 | STABILIZER GAUGE WHEEL W/ 9:5L TIRE (PAIR) |
| 1 | 15321 | GAUGE WHEEL MOUNT |
| 2 | 15627 | HINGE PLATE |
| 3 | 233882 | GAUGE WHEEL MAST |
| 4 | 233887 | ADJUST ROD SUB ASSY-PLATED |
| 5 | 233889 | GAUGE WHEEL LEG |
| 6 | 233886 | GAUGE WHEEL CRANK |
| 7 | 14131 | HUB & 2" SPINDLE ASSY |
| 8 | 16290 | WHL ASSY 9.5L x 15 6B 8" 8P GRAY |
| 9 | 88388 | 5/8NCx4x3-1/4 U-BOLT |
| 10 | 88933 | 5/8NCx6 GR8 BOLT |
| 11 | 88680 | 1/2NCx3-1/4 GR5 BOLT |
| 12 | 88142 | 1/2NFx1 (13/16 HEAD) |
| 13 | 88363 | NUT 2POSLK 1/2NC |
| 14 | 88369 | NUT 2POSLK 5/8NC |
| 15 | 244399 | GAGE WHEEL LOCK |

TIRE ASSEMBLIES, RIMS, TIRES , VALVE STEMS



IDENTIFY WHICH TIRE ASSEMBLY YOU REQUIRE, MOST WIL-RICH IMPLEMENTS HAVE MULTIPLE TIRE/RIM OPTIONS.

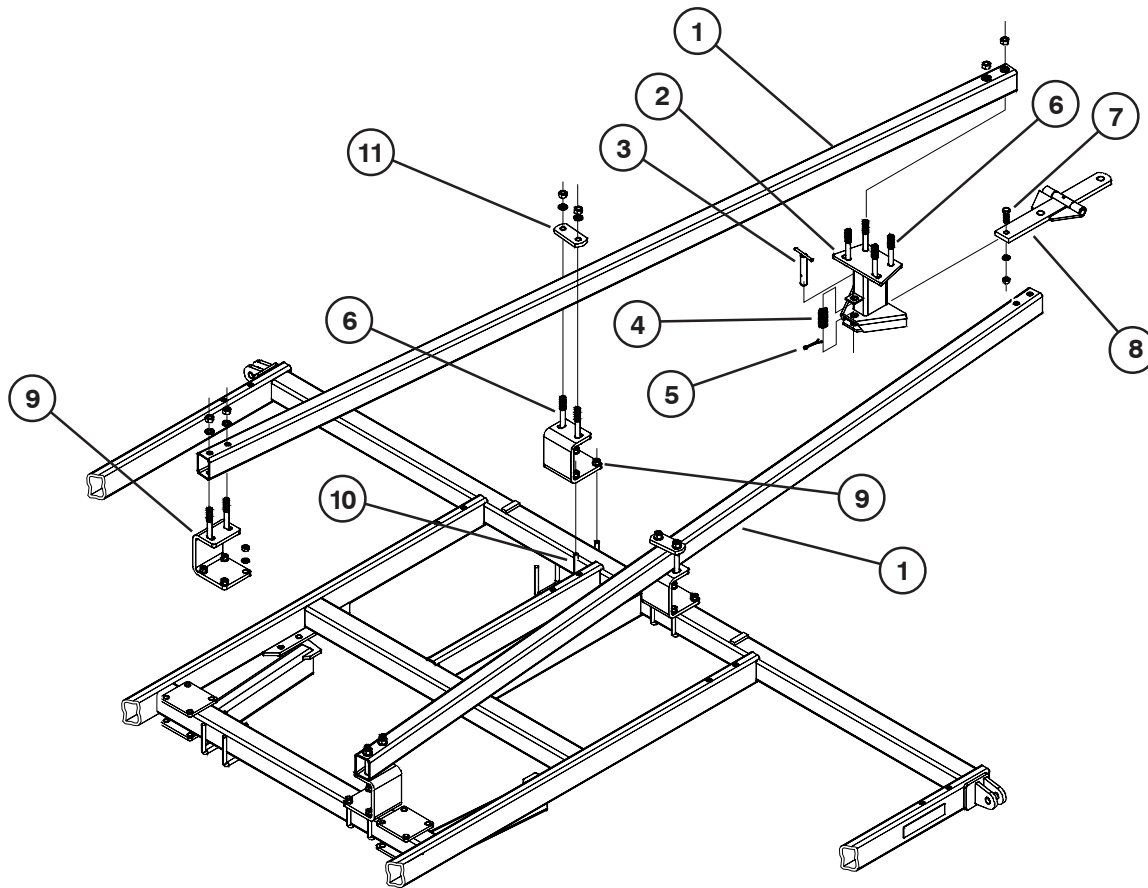
| ASSEMBLY | DESCRIPTION |
|----------|----------------------------------|
| 16290 | WHL ASSY 9.5LX15 6B 8" 8PLY |
| 10498 | RIM 15X8 6B (W511535V PO2) |
| 16287 | TIRE 95LX15 8PLY |
| 30784 | VALVE STEM ASSY TR415 |
| 24538 | WHL ASSY 11LX15 6B 8" 8P GRAY |
| 10498 | RIM 15X8 6B (W511535V PO2) |
| 29066 | TIRE 11L X 15 8PLY |
| 30784 | VALVE STEM ASSY TR415 |
| 65696 | WHL ASSY 11LX15 6B 10" 12PGRAY |
| 41279 | TIRE 11L X 15 12 PLY |
| 46714 | RIM 15X10 6B (W50534VP02) |
| 57908 | VALVE ASSEMBLY (STEEL) |
| 222087 | WHL ASSY 31X13.5 6B 10" 12P GRAY |
| 222088 | 31 X 13.50-15 12PLY TIRE |
| 46714 | RIM 15X10 6B (W50534VP02) |
| 57908 | VALVE ASSEMBLY (STEEL) |
| 246254 | WHL ASSY 13.50-15FI 8B 10IN F |
| 203196 | RIM 15 X 10 8B 8-6 (W51350V P02) |
| 246253 | 13.50-15 FI F HWY IMP TIRE |
| 57908 | VALVE ASSEMBLY (STEEL) |



77905A

| ITEM | PART NO | DESCRIPTION |
|------|---------|---|
| 1A | 222696 | 5/8x2x15 Spike w/ Hrwe Pkg |
| 1B | 240690 | 3" Twisted Concave LH Spike w/ Hrwe Pkg |
| 1C | 240691 | 3" Twisted Concave RH Spike w/ Hrwe Pkg |
| 2 | 88346 | NUT HVY 1/2-13NC 5P |
| 3 | 88347 | WSHR FLAT 1/2(9/16X1-3/8ACT) Z |
| 4 | 89468 | BLT PLW 1/2-13NCX2-1/2NO3 GRADE 8 PLAIN |

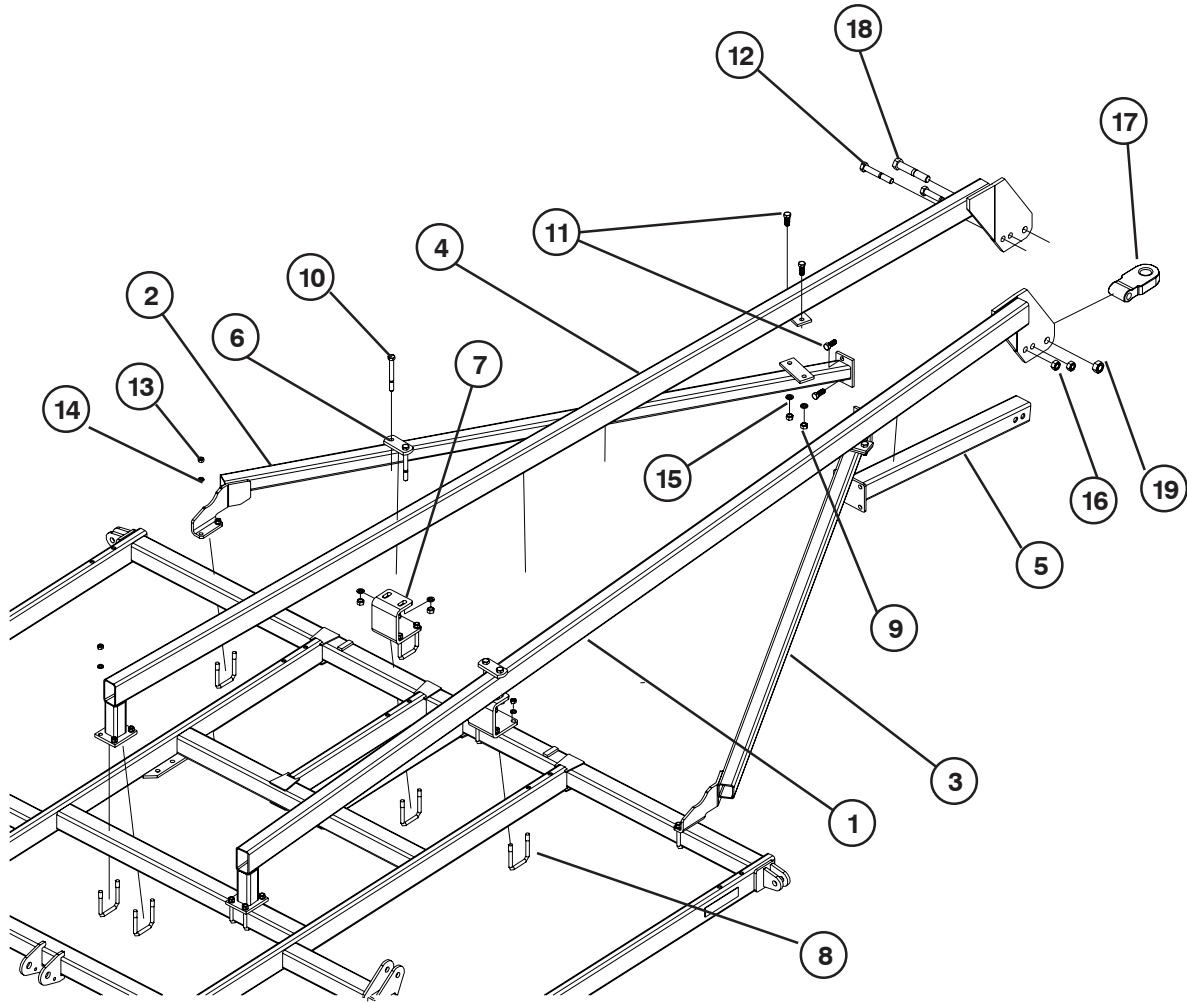
REAR HITCH W/HINGED TONGUE



| ITEM | PART NO. | DESCRIPTION |
|------|----------|------------------------|
| 1 | 233371 | REAR HITCH TUBE (164") |
| 2 | 58281 | HITCH MOUNT |
| 3 | 58284 | HITCH PIN(1x2-27/32) |
| 4 | 15940 | SPRING |
| 5 | 88101 | COTTER PIN (1/4x2-1/2) |
| 6 | 88293 | 3/4NCx6 GR5 BOLT |
| 7 | 88294 | 5/8NCx2 GR5 BOLT |
| 8 | 18443 | HINGE TONGUE ASSEMBLY |
| 9 | 233375 | HITCH TUBE MOUNT |
| 10 | 88145 | 5/8NCx4x5-1/4 U-BOLT |
| 11 | 233372 | TUBE STRAP |

**THIS HITCH FITS ONLY 5830 13FT MAIN FRAMES
AND MAY PREVENT USE OF OTHER OPTIONS.**

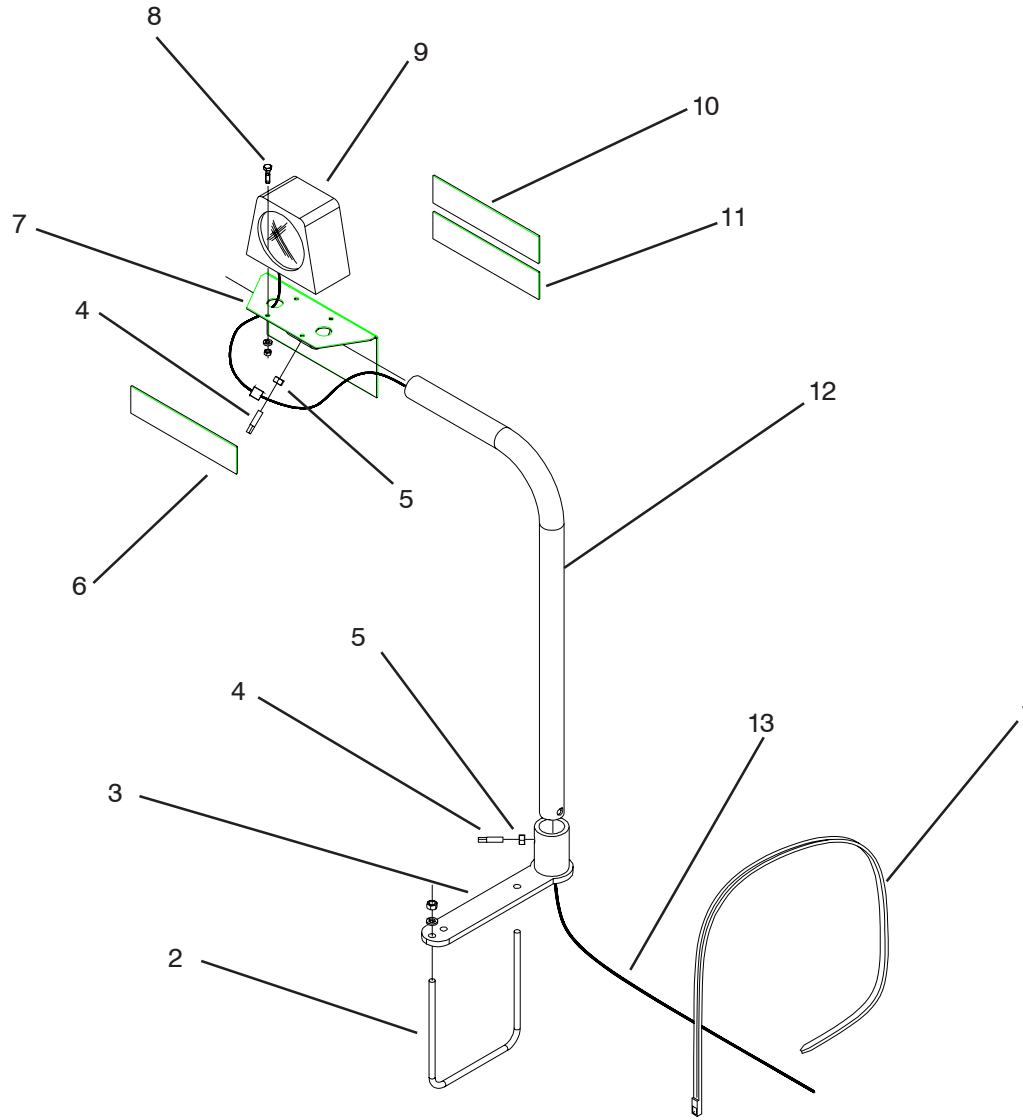
HEAVY DUTY REAR HITCH



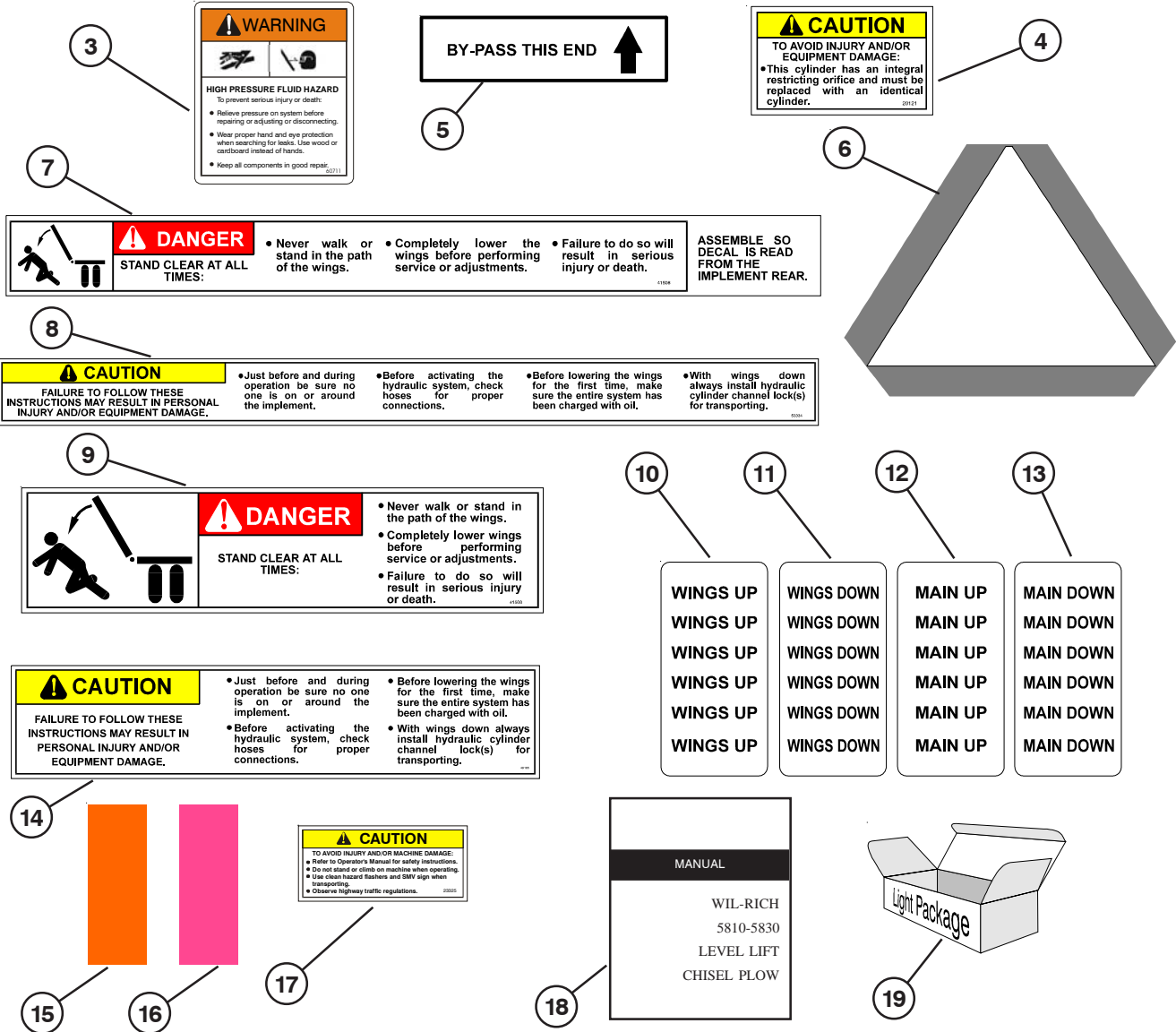
THIS HITCH FITS ONLY 5830 13FT MAIN FRAMES AND MAY PREVENT USE OF OTHER OPTIONS.

| ITEM | PART NO | DESCRIPTION | ITEM | PART NO | DESCRIPTION |
|------|---------|--------------------------|------|---------|----------------------------|
| 1 | 233398 | LEFT INNER HITCH TUBE | 11 | 88290 | BLT HEX 3/4-10NCX2 8YZ |
| 2 | 233400 | RIGHT OUTER HITCH BRACE | 12 | 88666 | BLT HEX 1-8NCX6-1/2 5Z |
| 3 | 233401 | LEFT OUTER HITCH BRACE | 13 | 88126 | NUT HEX 5/8-11NC 5Z |
| 4 | 233402 | RIGHT INNER HITCH BRACE | 14 | 88129 | WSHR HLK 5/8ID(11/16ACT) Z |
| 5 | 233408 | HITCH DOWN TUBE | 15 | 88130 | WSHR HLK 3/4ID(13/16ACT) Z |
| 6 | 233372 | TUBE STRAP | 16 | 88658 | NUT TOP LK 1-8NC 5Z |
| 7 | 233375 | HITCH MOUNT | 17 | 18237 | CAST HITCH |
| 8 | 88145 | BLT-U 5/8-11NCX4X5-1/4 Z | 18 | 89134 | BLT HEX 1-1/4-7NCX7 5Z |
| 9 | 88110 | NUT HEX 3/4-10NC 5Z | 19 | 88430 | NUT 2POSLK 1-1/4-7NC 5Z |
| 10 | 88335 | BLT HEX 3/4-10NCX7 5Z | | | |

LIGHTS



| ITEM | PART NO | DESCRIPTION | ITEM | PART NO | DESCRIPTION |
|------|---------|-----------------------------|------|---------|------------------------------|
| | 223163 | LIGHT KIT (RIDGID) | 11 | 223118 | RED/ORANGE FLUORESCENT DECAL |
| | 234606 | LIGHT KIT (4, 6 WING) | 12 | 223140 | 12x12 LIGHT ARM |
| | 223780 | LIGHT KIT (9, 12 WING) | | 223156 | 27x33 LIGHT ARM |
| 1 | 13479 | 4" SQUARE TIE LOOP | | 223121 | 48" OFFSET LIGHT ARM |
| 2 | 88385 | 3/8NCx4x4-3/4 U-BOLT | 13 | 223330 | AG LIGHT KIT |
| 3 | 223130 | SHORT BASE PIVOT | | 223145 | AG MODULE |
| 4 | 88702 | 3/8NCx3/4 SQ HEAD SET SCREW | | 223146 | WISHBONE 4 LEAD |
| 5 | 88103 | 3/8NC NUT | | 64597 | 35' HARNESS |
| 6 | 22372 | YELLOW DECAL | | | |
| 7 | 223126 | LIGHT/REFLECTOR BRACKET | | | |
| 8 | 88203 | 1/4NCx1 BOLT | | | |
| 9 | 223143 | AMBER LIGHT | | | |
| | 223144 | RED LIGHT | | | |
| 10 | 22371 | RED DECAL | | | |



| ITEM | PART NO | DESCRIPTION | ITEM | PART NO | DESCRIPTION |
|------|---------|-------------------------------|------|---------|----------------------------|
| 1 | 65342 | WIL-RICH DECAL (3-5/8X23-7/8) | 11 | 54901 | WINGS DOWN DECAL |
| 2 | 235004 | 5800 DECAL | 12 | 54902 | MAIN UP DECAL |
| 3 | 60711 | HIGH PRESSURE FLUID HAZARD | 13 | 54903 | MAIN DOWN DECAL |
| 4 | 20121 | INTEGRAL RESTRICTOR DECAL | 14 | 49165 | CAUTION DECAL |
| 5 | 20339 | BYPASS DECAL | 15 | 22372 | AMBER REFLECTOR |
| 6 | 41345 | SMV KIT | 16 | 22371 | RED REFLECTOR |
| 7 | 41508 | WING LOCK DANGER DECAL | 17 | 23325 | CAUTION DECAL - READ |
| 8 | 53334 | CAUTION DECAL | 18 | 74244 | 5810/5830 ASSEMBLY MANUAL |
| 9 | 49163 | WING LOCK DANGER DECAL | | 74245 | 5810/5830 OPERATORS MANUAL |
| 10 | 54900 | WINGS UP DECAL | 19 | 64594 | CLEARANCE LIGHT PACKAGE |

WIL-RICH, LLC

WARRANTY

Wil-Rich's products are warranted to the original non-commercial purchaser to be free from defects in material and workmanship for a minimum period of twelve (12) months from the original date of purchase.

Additional Field Cultivator Warranty: Wil-Rich warrants to the original purchaser of each new Wil-Rich Field Cultivator unit (Excel and QuadX), and Disk Field Cultivators that the product be free from defects in material and workmanship for the period of three (3) years on the main frames and shank assemblies. All other components are covered by the twelve (12) month warranty period.

Commercial Use: Warranty for commercial, rental or custom use of any Wil-Rich product is limited to 90 days, parts and labor.

We warrant products sold by us to be in accordance with our published specifications or those specifications agreed to by us in writing at time of sale. Our obligation and liability under this warranty is expressly limited to repairing, or replacing, at our option, within 12 months after date of retail delivery, any product not meeting the specifications. ***We make no other warranty, express or implied and make no warranty of merchantability or of fitness for any particular purpose.*** If requested by us, products or parts for which a warranty claim is made are to be returned transportation prepaid to our factory. Any improper use, operation beyond rated capacity, substitution of parts not approved by us, or any alteration or repair by others in such manner as in our judgment affects the product materially and adversely shall void this warranty. ***No employee or representative is authorized to change this warranty in any way or grant any other warranty.***

Wil-Rich reserves the right to make improvement changes on any of our products without notice.

When warranty limited or not applicable: Warranty on hydraulic hoses, hydraulic cylinders, hubs, spindles, engines, valves, pumps or other trade accessories are limited to the warranties made by the respective manufactures of these components. Rubber tires and tubes are warranted directly by the respective tire manufacturer only, and not by Wil-Rich.

This warranty shall not be interpreted to render Wil-Rich liable for injury or damages of any kind or nature to person or property. This warranty does not include claims for, or extend to the loss or damage of crops, loss because of delay in seeding/planting or harvesting, or any expense or loss incurred for labor, substitute machinery, rental, and transportation expense or for any other reason.

A Warranty Validation and Delivery Report Form must be filled out and received by Wil-Rich to initiate the warranty coverage.

WARRANTY CLAIMS PROCEDURE

1. The warranty form must be returned to Wil-Rich within thirty (30) working days from the repair date.
2. Parts returned to Wil-Rich without authorization will be refused. The parts must be retained at the dealership for ninety (90) days after the claim has been filed. If the Service Department would like to inspect the parts, a packing slip will be mailed to the dealer. The packing slip must be returned with the parts. The parts must be returned prepaid within thirty (30) days of receiving authorization. After the parts are inspected and warranty is verified, credit for the return freight will be issued to the dealer.
3. Parts that will be scrapped at the dealership will be inspected by a Wil-Rich Sales Representative, District Sales Manager or Service Representative within the ninety (90) day retaining period.