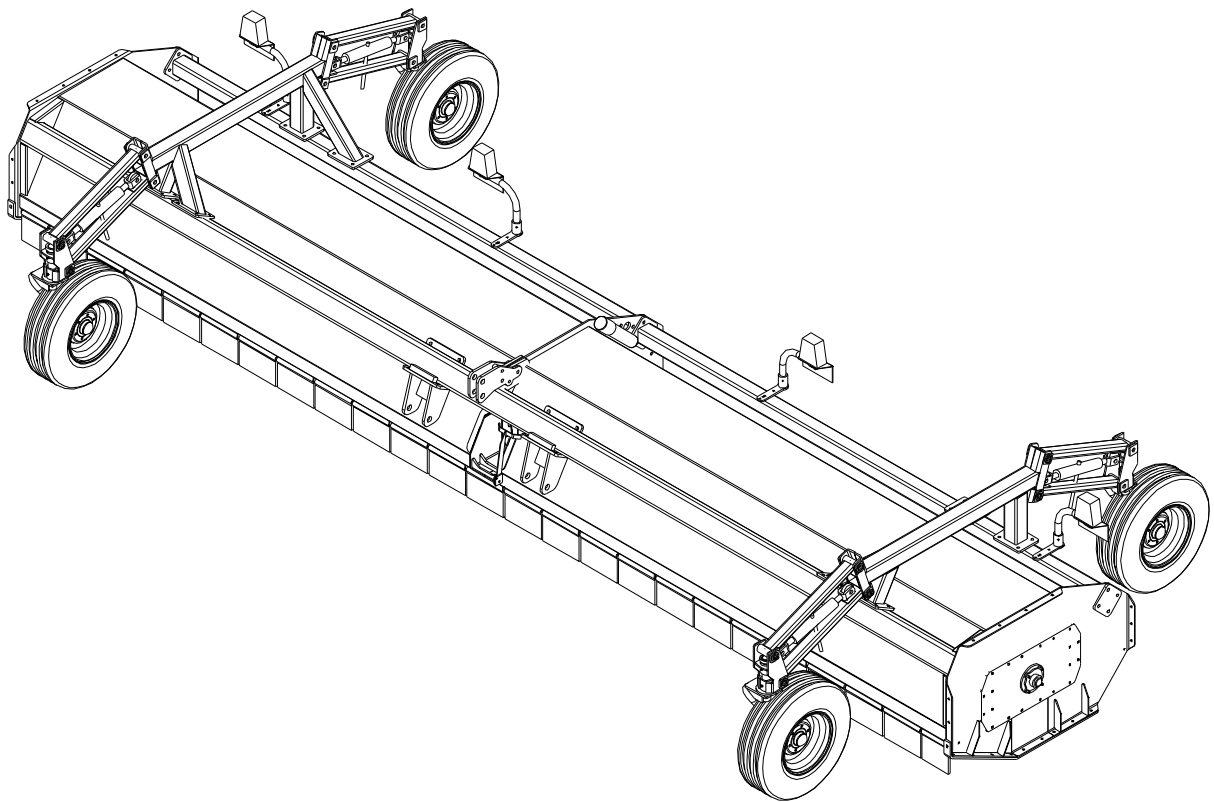




PARTS MANUAL



SHREDDER

Printed in USA (74247) 11/11

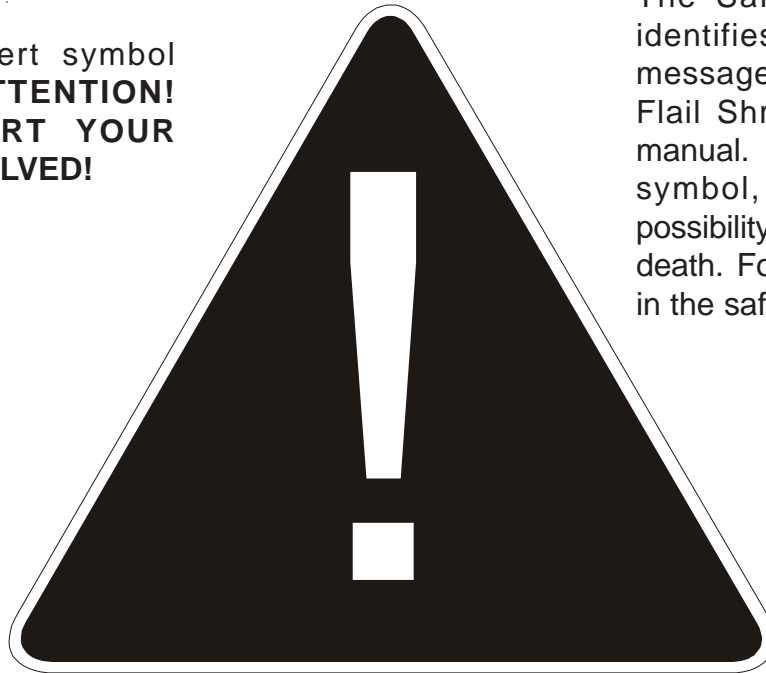
 **WIL-RICH**

PO Box 1030
Wahpeton, ND 58074
PH (701) 642-2621
Fax (701) 642-3372
www.wil-rich.com

PERSONAL SAFETY IS IMPORTANT!

ALL PERSONNEL INVOLVED WITH THE ASSEMBLY AND/OR OPERATION OF THIS EQUIPMENT MUST BE INFORMED OF PROPER SAFETY PROCEDURES. OPERATOR'S/ASSEMBLY MANUALS PROVIDE THE NECESSARY INFORMATION. IF THE MANUAL IS LOST FOR A PARTICULAR IMPLEMENT, ORDER A REPLACEMENT AT ONCE. OPERATOR'S AND ASSEMBLY MANUALS ARE AVAILABLE AT NO CHARGE UPON REQUEST.

This Safety Alert symbol means **ATTENTION!**
BECOME ALERT YOUR SAFETY IS INVOLVED!



The Safety Alert symbol identifies important safety messages on the Wil-Rich Flail Shredder and in this manual. When you see this symbol, be alert to the possibility of personal injury or death. Follow the instructions in the safety message.

Why is SAFETY important to you?

3 Big Reasons

Accidents Disable and Kill

Accidents Cost

Accidents Can Be Avoided

SIGNAL WORDS:

Note the use of the signal words **DANGER**, **WARNING** and **CAUTION** with the safety messages. The appropriate signal word for each message has been selected using the following guidelines:

DANGER

An immediate and specific hazard which **WILL** result in severe personal injury or death if the proper precautions are not taken.

WARNING

A specific hazard or unsafe practice which **COULD** result in severe personal injury or death if the proper precautions are not taken

CAUTION

Unsafe practices which **COULD** result in personal injury if proper practices are not taken, or as a reminder of good safety practices.

ADDRESS INQUIRIES TO:
WIL-RICH
PO BOX 1030
WAHPETON, ND 58074
PH (701) 642-2621 FAX (701) 642-3372

SPECIFICATIONS

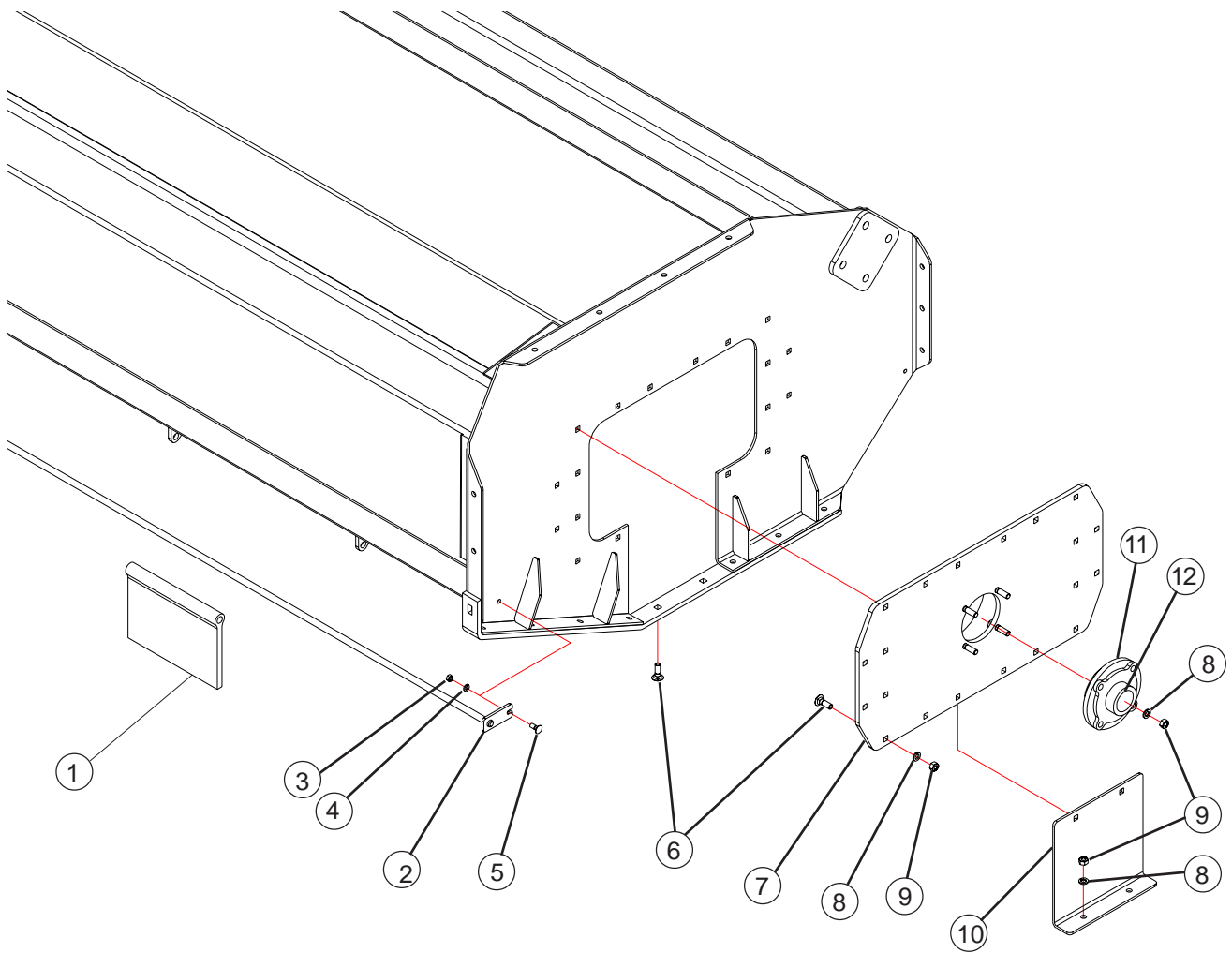
Maximum Outside Body Width:	15'	187in. (4.7m)
.....	20'	247 in. (6.3m)
.....	22'	271 in. (6.9m)
.....	25'	307 in. (7.8m)
.....	26'8"	327 in. (8.3m)
.....	30'	367 in. (9.3m)

Cutting Height..... 3 in. to 12 in. (7.62 cm to 30.5 cm)

Width of Cut	15'	178 in. (4.5m)
.....	20'	238 in. (6.0m)
.....	22'	262 in. (6.7m)
.....	25'	298 in. (7.6m)
.....	26'8"	318 in. (8.0m)
.....	30'	358 in. (9.0m)

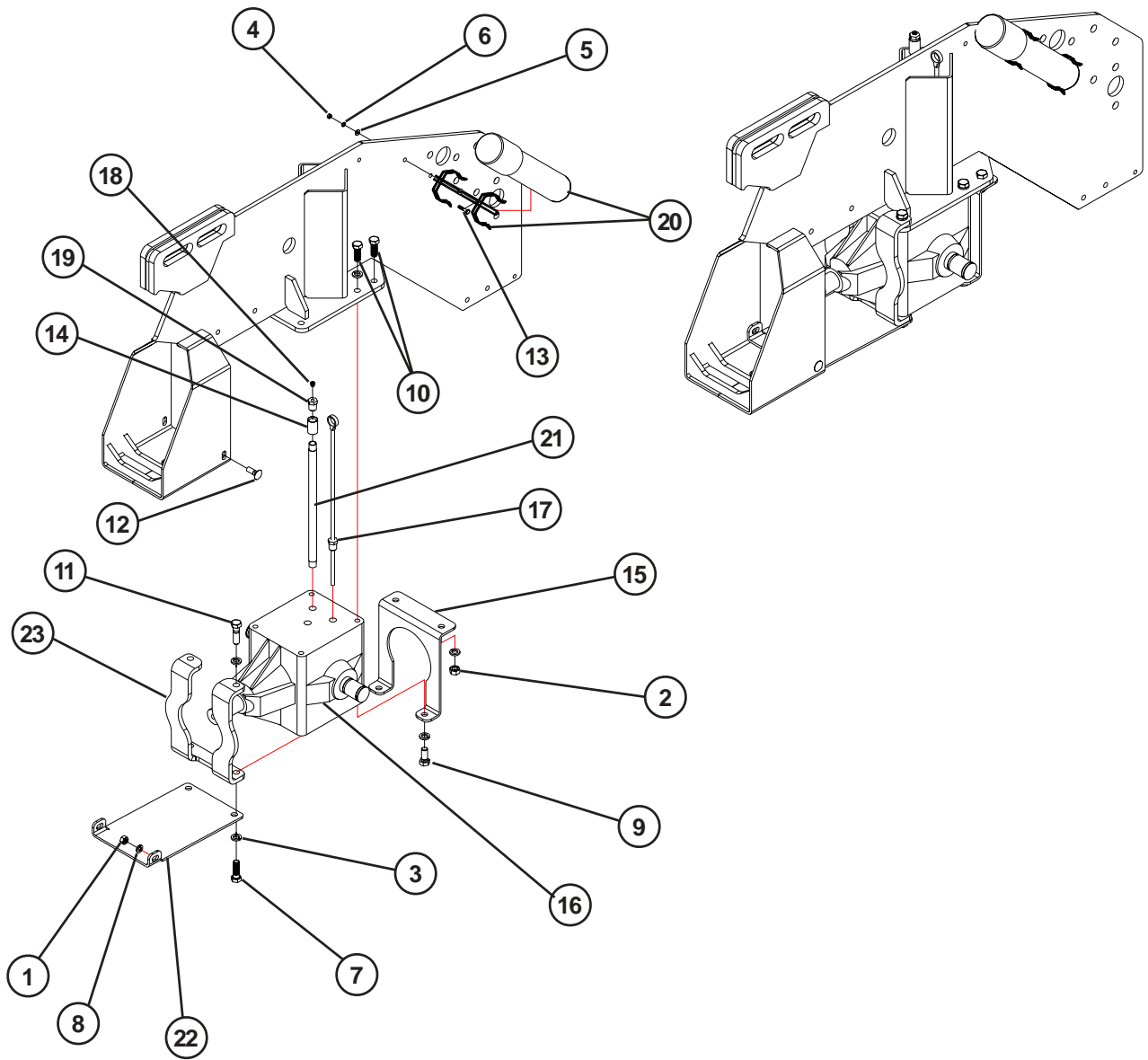
Knives	" L"
Number on 15'	168
Number on 20'	224
Number on 22'	248
Number on 25'	288
Number on 26'8"	304
Number on 30'	344

Recommended Tire Size	9.5L - 15, 8 ply rated
Tire Inflation Pressure	25 psi
Rotor Speed	1350 RPM dynamically balanced
Drive: PTO	1000 RPM
Weight of Shredder (approximate)	15' 4875 lbs. (2211 kg)
:	20' 6200 lbs. (2813 kg)
.....	22' 6750 lbs. (3062 kg)
.....	25' 7400 lbs. (3357 kg)
.....	26'8" 7625 lbs. (3458 kg)
.....	30' 9500 lbs. (4309 kg)

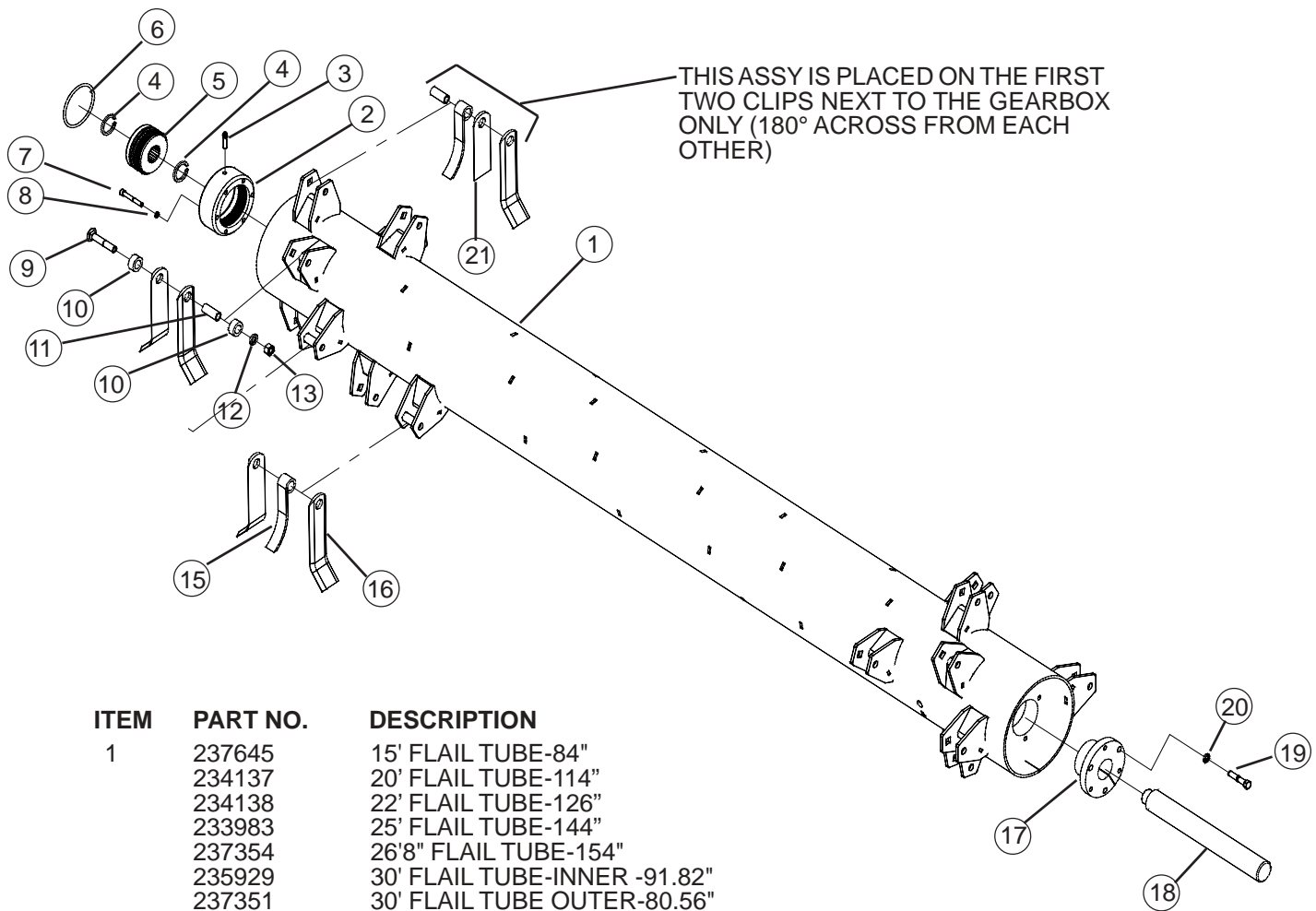


ITEM	PART NO.	DESCRIPTION
1	234103	RUBBER FLAP - QTY 15'=15, 20'=20, 22'=22, 25'=25, 26'8"=27, 30'=30
2	237656	15' FLAP ROD-90"
	234180	20' FLAP ROD-120"
	234179	22' FLAP ROD-133"
	234101	25' FLAP ROD-150"
	237891	26'8" FLAP ROD-160"
	235932	30' FLAP ROD-180"
3	88103	3/8 NC NUT
4	88362	3/8 LOCK WASHER
5	89009	3/8NCx1 CARRIAGE BOLT
6	88873	1/2" x 1-1/2" CARRIAGE BOLT
7	234009	BEARING PLATE
8	88303	1/2 LOCK WASHER
9	88104	1/2 NC NUT
10	233960	COVER END PLATE (SERIAL NO 455118 TO 455632)
	235529	COVER END PLATE (455633 - UP)
11	233984	2-3/16" PILOTED BEARING
12	239448	LOCK COLLAR

NOTE: RUBBER FLAPS LOCATED ON EACH END OF THE SHREDDER ARE CUT TO FIT.



ITEM	PART NO.	DESCRIPTION
1	88104	1/2" NC NUT
2	88126	5/8" NC NUT
3	88129	5/8" LOCK WASHER
4	88172	1/4" NC NUT
5	88261	1/4" FLAT WASHER
6	88262	1/4" LOCK WASHER
7	88294	5/8"NC x 2" HEX BOLT
8	88303	1/2" LOCK WASHER
9	88577	5/8"NC x 1-1/2" HEX BOLT
10	88838	5/8"NC x 1-3/4" HEX BOLT
11	88839	5/8"NC x 2-1/4" HEX BOLT
12	88873	1/2"NC x 1-1/2" CRG BOLT
13	89028	1/4" NC x 1-1/4" HEX BOLT
14	200800	1/2" COUPLING
15	233963	REAR PLATE-GEARBOX SUPPORT
16	233986	GEAR BOX (SEE PAGE 23)
17	234139	DIP STICK
18	234143	5 PSI BREATHER
19	234147	1/2" MPT x 1/8" FPT REDUCER
20	234313	STORAGE TUBE-OWNERS MANUAL
21	234391	OIL FILL PIPE
22	237335	PLATE-CLUTCH GUARD
23	240780	FRONT PLATE-GEARBOX SUPPORT

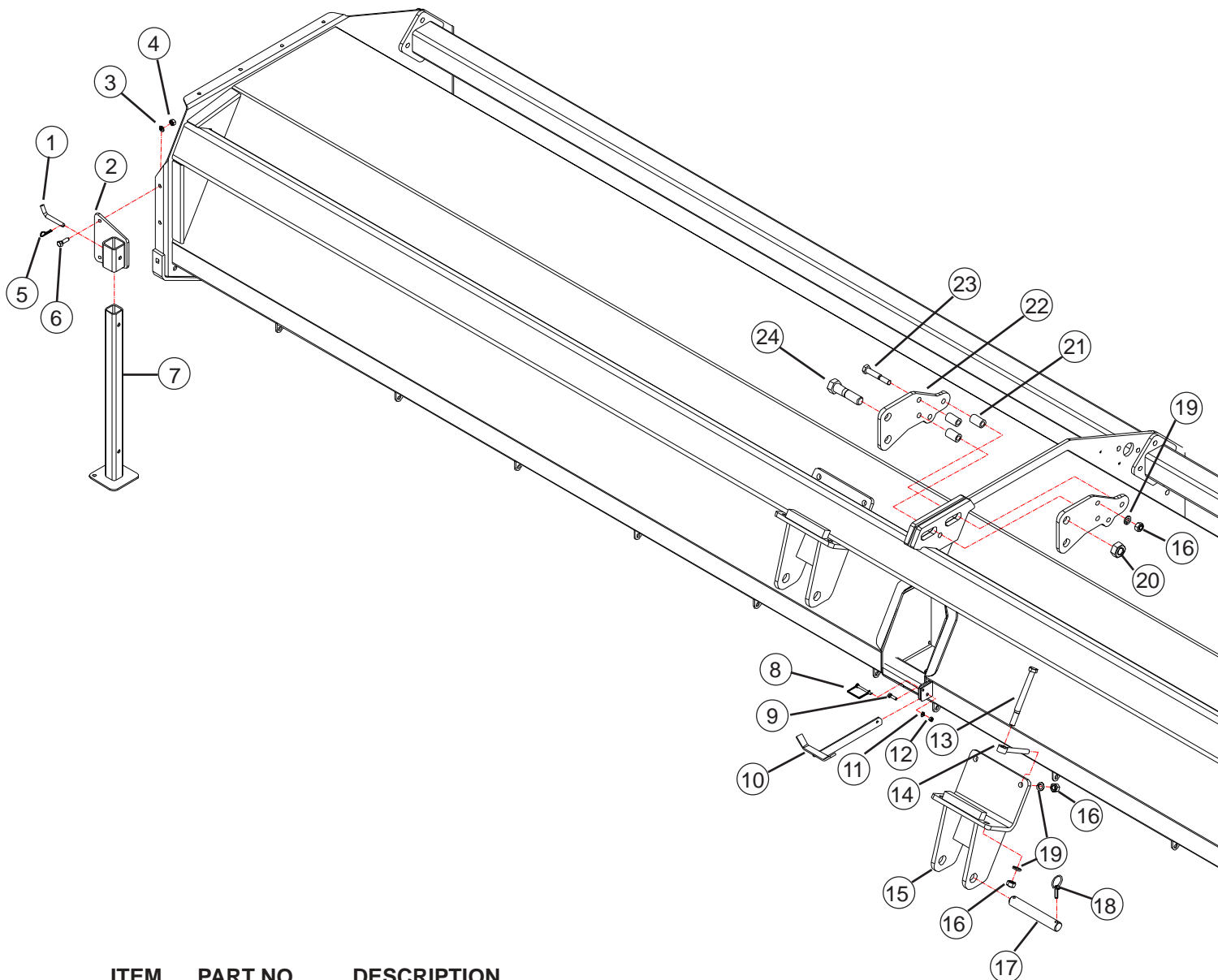


THIS ASSY IS PLACED ON THE FIRST TWO CLIPS NEXT TO THE GEARBOX ONLY (180° ACROSS FROM EACH OTHER)

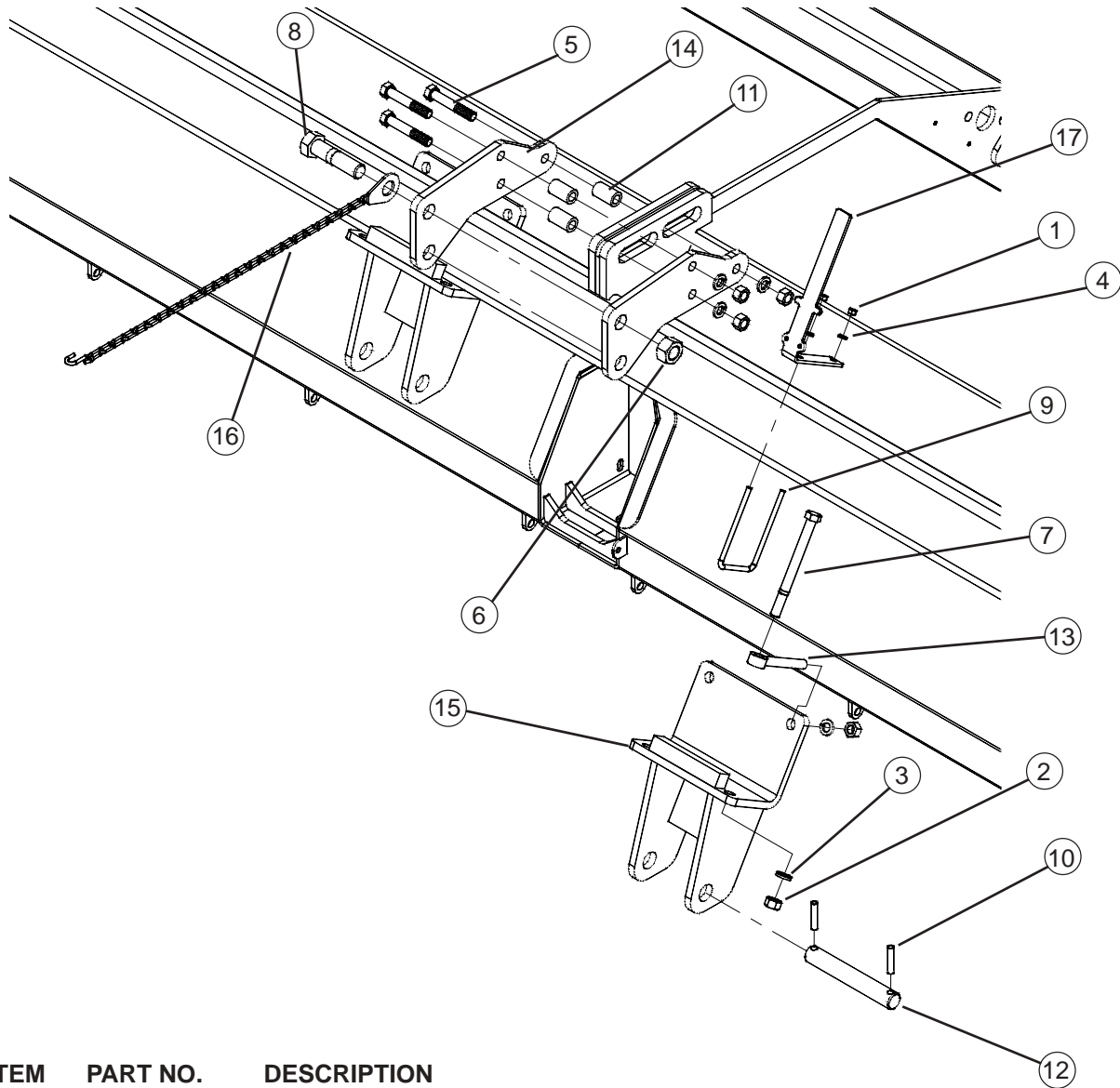
ITEM	PART NO.	DESCRIPTION	
1	237645	15' FLAIL TUBE-84"	
	234137	20' FLAIL TUBE-114"	
	234138	22' FLAIL TUBE-126"	
	233983	25' FLAIL TUBE-144"	
	237354	26'8" FLAIL TUBE-154"	
	235929	30' FLAIL TUBE-INNER -91.82"	
	237351	30' FLAIL TUBE OUTER-80.56"	
	237646	15' TUBE WITH "L" KNIVES (168 KNIVES/UNIT)	
	234132	20' TUBE WITH "L" KNIVES (224 KNIVES/UNIT)	
	234133	22' TUBE WITH "L" KNIVES (248 KNIVES/UNIT)	
	233988	25' TUBE WITH "L" KNIVES (288 KNIVES/UNIT)	
	237355	26'8" TUBE WITH "L" KNIVES (304 KNIVES/UNIT)	
	235930	30' TUBE WITH "L" KNIVES INNER (344 KNIVES/UNIT)	
	237352	30' TUBE WITH "L" KNIVES OUTER (344 KNIVES/UNIT)	
	2	233981	DRIVE SLEEVE
	3	234315	1-3/4" GREASE FITTING
	4	234142	SNAP RING
	5	233982	DRIVE HUB
	6	234141	O-RING
	7	89381	3/8NCx2.75" SOCKET HEAD BOLT
	8	234148	3/8 HIGH COLLAR LOCK WASHER
9	89138	5/8NCx3.5 CARRIAGE BOLT	
10	233968	PLASTIC SPACER	
11	233969	HARDENED BUSHING	
12	88129	5/8 LOCK WASHER	
13	88369	5/8 LOCK NUT	
15	234231	6.5" CUP KNIFE	
16	233987	9" L-KNIFE	
17	233975	2-3/16" DRIVE HUB	
18	233973	FLAIL TUBE END SHAFT	
19	234146	1/2NCx2.5" BOLT	
20	88303	1/2" LOCK WASHER	
21	238461	6-1/4" STRAIGHT KNIFE	

STANDARD KNIFE ASSY - 10, 11, & 16.

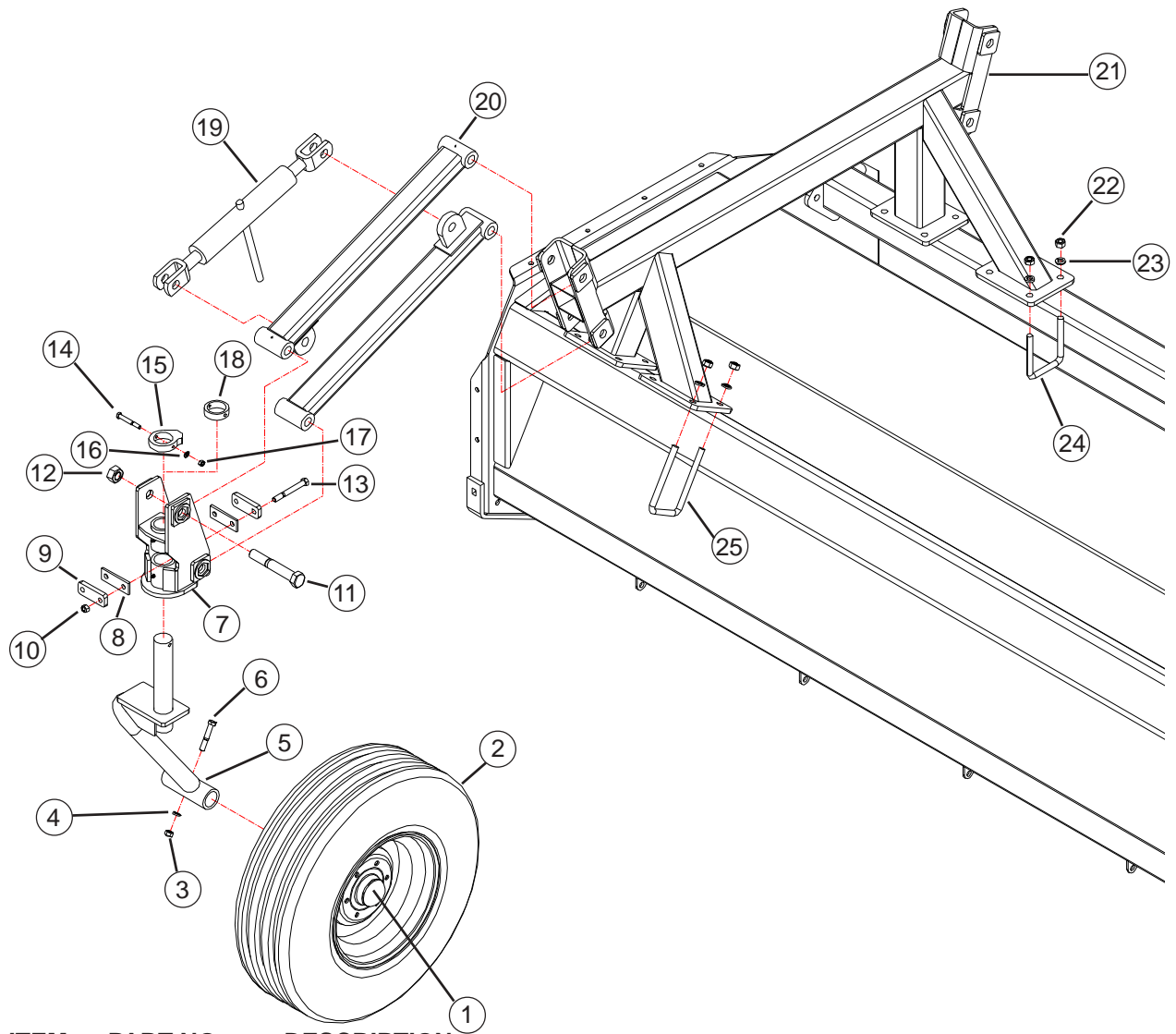
OPTIONAL KNIFE ASSY - 11, 15, & 16, THIS KNIFE ASSY CAN BE USED ACROSS THE WHOLE FLAIL TUBE.



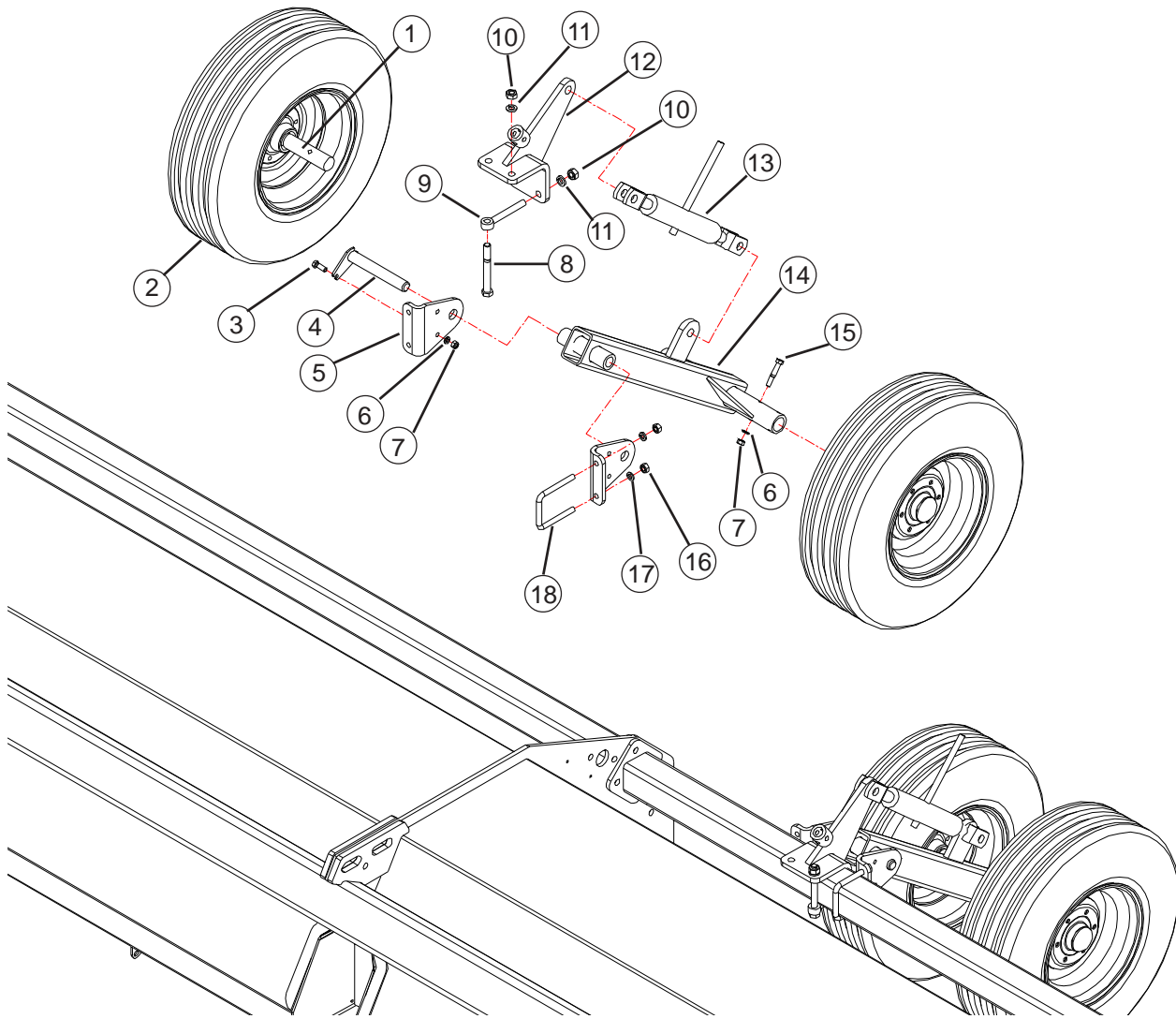
ITEM	PART NO.	DESCRIPTION
1	23048	BENT HITCH PIN 1/2x3-5/16
2	234354	STAND BRACKET
3	88303	1/2" LOCK WASHER
4	88104	1/2" NC NUT
5	88435	.14x2.56" HAIR PIN
6	88475	1/2NCx1.5 BOLT
7	234355	PARK STAND
8	915402	5/16x2.75 LYNCH PIN (SERIAL NO 455118 TO 455632)
9	88555	3/8NCx1.25" BOLT
10	234320	PTO CRADDLE (SERIAL NO 455118 TO 455632)
11	88362	3/8" LOCK WASHER
12	88103	3/8"NC NUT
13	88487	3/4NCx8.5" BOLT
14	234145	3/4NCx6 EYE BOLT
15	234144	LOWER HITCH (SERIAL NO 455118 TO 455632)
16	88110	3/4"NC NUT
17	234102	LOWER 3PT PIN
18	32990	7/16x1.5" CLICK PIN (SERIAL NO 455118 TO 455632)
19	88130	3/4" LOCK WASHER
20	88430	1-1/4"NC LOCK NUT
21	233959	UPPER MAST BUSHING .76x1-1/4ODx2.09
22	233958	UPPER MAST PLATE (SERIAL NO 455118 TO 455632)
23	88421	3/4NCx4.5" BOLT
24	89027	1.25NCx5" BOLT



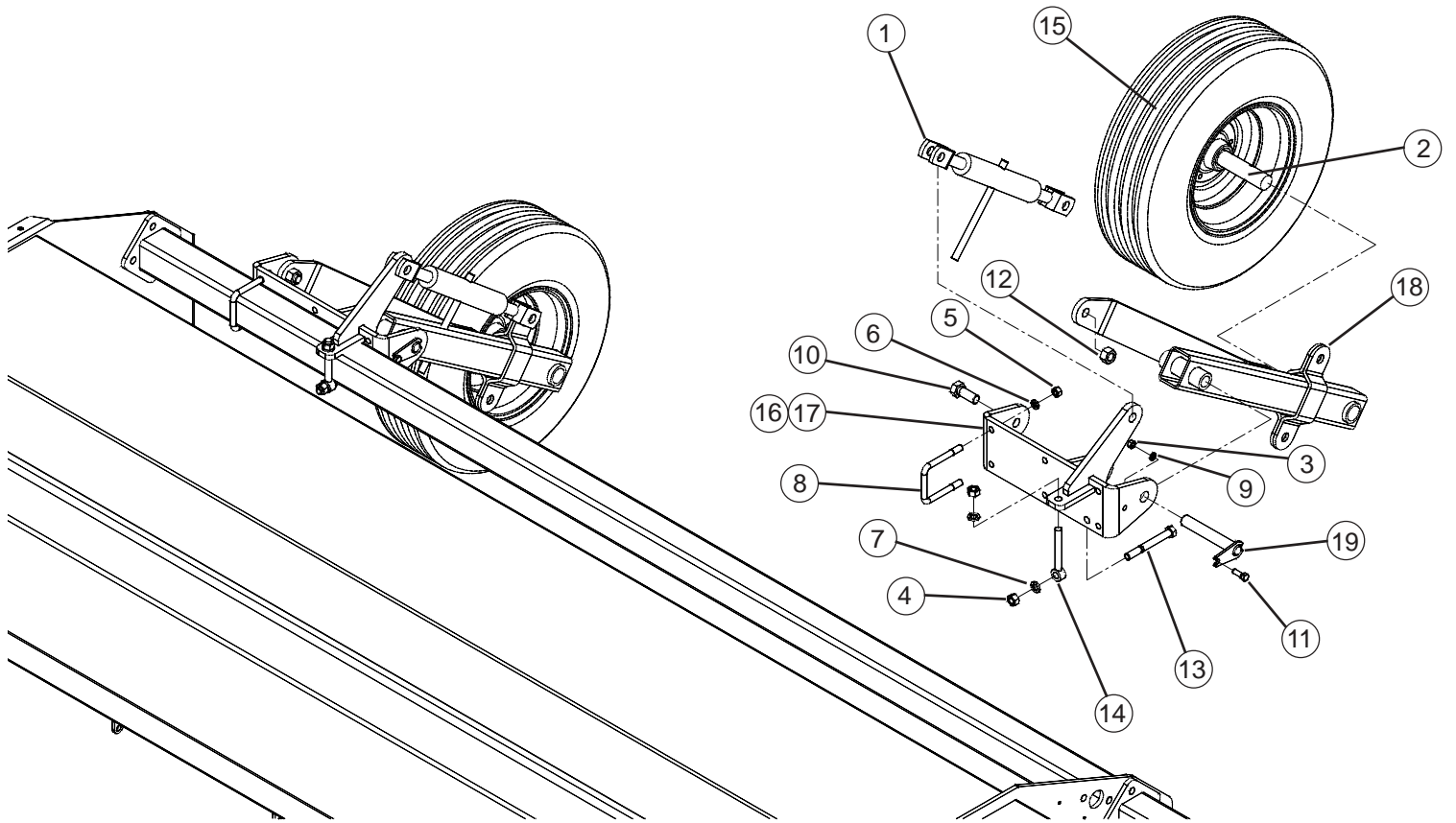
ITEM	PART NO.	DESCRIPTION
1	88103	3/8" NC HEX NUT
2	88110	3/4" NC HEX NUT
3	88130	3/4" LOCK WASHER
4	88362	3/8" LOCK WASHER
5	88421	3/4" X 4-1/2" NC HEX BOLT
6	88430	1-1/4" CENTER LOCK NUT
7	88487	3/4" X 8-1/2" NC HEX BOLT
8	89027	1-1/4" X 5" NC HEX BOLT
9	89040	3/8" X 4" X 7" NC U-BOLT
10	89059	1/2" DIA X 2-1/2" ROLL PIN
11	233959	BUSHING-UPPER MAST .76x1-1/4ODx2.09
12	234102	LOWER 2PT PIN
13	234145	3/4" X 6" NC EYE BOLT
14	235526	PLATE-FLOATING 3RD ARM
15	235527	LOWER 2PT MOUNT
16	235554	CHAIN ASSEMBLY-PTO
17	235954	COMBINATION STRAP



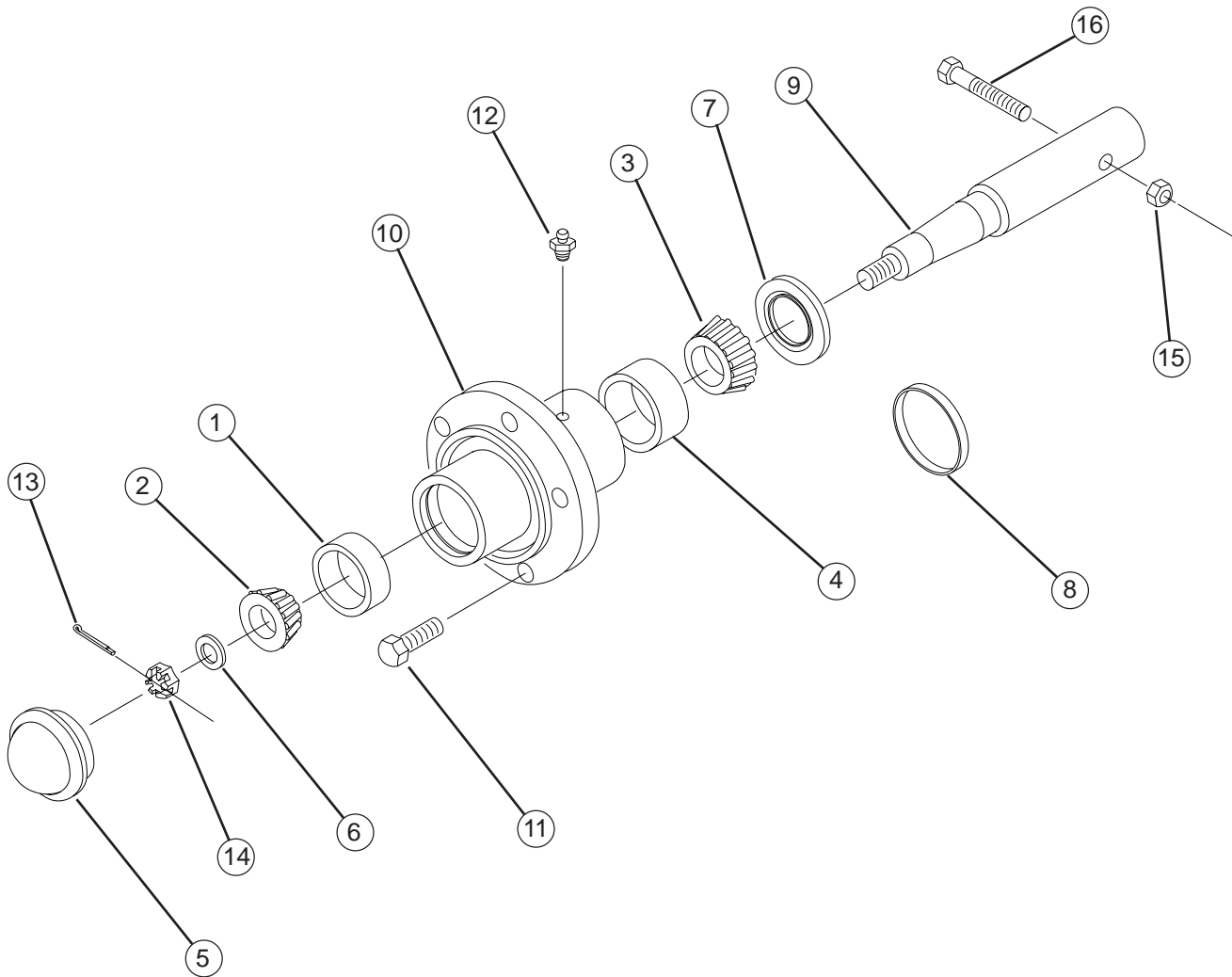
ITEM	PART NO.	DESCRIPTION
1	41233	6-BOLT HUB & 1-3/4" SPINDLE ASS'Y (SEE PAGE 12)
2	234393	TIRE W/TUBE 9.5L X 15 8-PLY & RIM 15 X 6 6-BOLT
3	88104	1/2"NC NUT
4	88303	1/2" LOCK WASHER
5	240306	CASTOR WHEEL LEG
6	88541	1/2NCx3" BOLT
7	220850	GAUGE WHEEL PIVOT
8	67790	DAMPER PAD
9	67791	DAMPER PLATE
10	88363	1/2"NC LOCK NUT
11	221336	1NCx6.5" PIVOT BOLT
12	89075	1"NC LOCK NUT
13	88382	1/2NCx4.5" BOLT
14	88531	3/8NCx3 BOLT
15	235555	CASTOR STOP COLLAR (20' MODELS ONLY, FRONT)
16	88362	3/8 LOCK WASHER
17	88103	3/8"NC NUT
18	14189	LINK ARM STOP COLLAR
19	33104	JACK, RATCHET
20	234107	CASTER ARM
21	234116	LH WHEEL MOUNT
	234117	RH WHEEL MOUNT (SHOWN)
22	88126	5/8"NC NUT
23	88129	5/8" LOCK WASHER
24	88145	5/8NCx4x5.25 U-BOLT
25	89097	5/8NCx4x7.25 U-BOLT



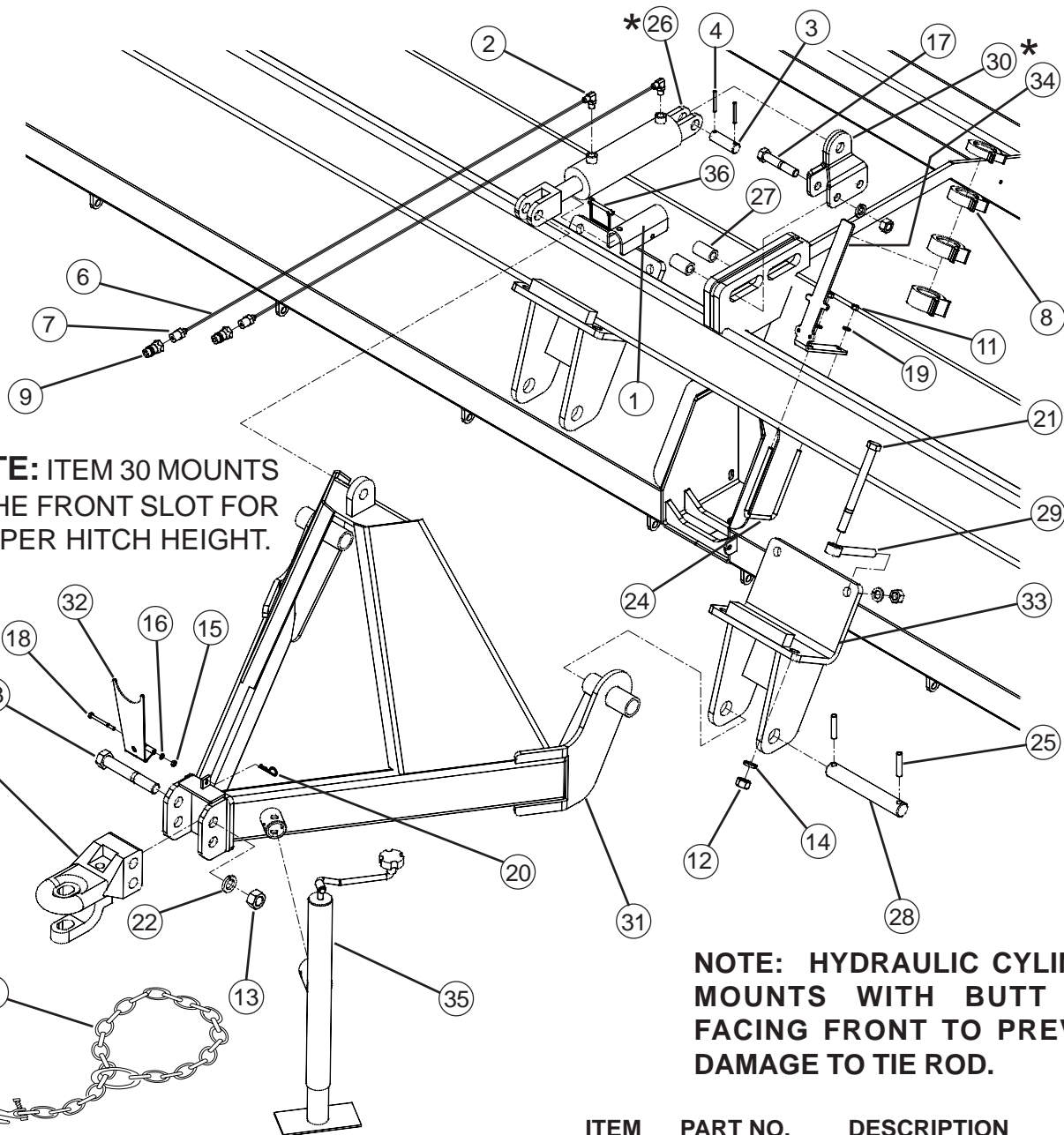
ITEM	PART NO.	DESCRIPTION
1	41233	6-BOLT HUB & 1-3/4" SPINDLE ASS'Y (SEE PAGE 12)
2	234393	TIRE W/TUBE 9.5L X 15 8-PLY & RIM 15 X 6 6-BOLT
3	88475	1/2NCx1.5" BOLT
4	233944	HINGE PIN (SERIAL NO 455118 TO 455632)
5	234345	REAR STRUT EAR (SERIAL NO 455118 TO 455632)
6	88303	1/2" LOCK WASHER
7	88104	1/2" NC NUT
8	89130	3/4NCx6.5" BOLT
9	234145	3/4NCx6" EYE BOLT
10	88110	3/4"NC NUT
11	88130	3/4" LOCK WASHER
12	234348	REAR STRUT ANCHOR (SERIAL NO 455118 TO 455632)
13	33104	JACK, RATCHET
14	234005	REAR STRUT (SERIAL NO 455118 TO 455632)
15	88541	1/2NCx3" BOLT
16	88126	5/8"NC NUT
17	88129	5/8" LOCK WASHER
18	88145	5/8NCx4x5.25 U-BOLT



ITEM	PART NO.	DESCRIPTION
1	33104	JACK, RATCHET
2	41234	6-BOLT HUB & 1-3/4" SPINDLE ASS'Y (SEE PAGE 12)
3	88104	1/2" NC HEX NUT
4	88110	3/4" NC HEX NUT
5	88126	5/8" NC HEX NUT
6	88129	5/8" LOCK WASHER
7	88130	3/4" LOCK WASHER
8	45633	5/8" X 4" X 5-1/2" NC U-BOLT
9	88303	1/2" LOCK WASHER
10	88393	1" X 2-1/2" NC HEX BOLT
11	88475	1/2" X 1-1/2" NC HEX BOLT
12	88658	1" NC TOP LOCK NUT
13	89130	3/4" X 6-1/2" NC HEX BOLT
14	234145	3/4" X 6" NC EYE BOLT
15	234393	TIRE W/TUBE 9.5L X 15 8-PLY & RIM 15 X 6 6-BOLT
16	235538	MOUNTING BRKT WELD-RH(SHOWN)
17	235546	MOUNTING BRKT WELD-LH
18	235544	REAR STRUT WELD
19	235548	1-1/4" PIN WELD



ITEM	PART NO.	DESCRIPTION
1	10344	OUTER BEARING CUP
2	10345	OUTER BEARING CONE
3	11378	INNER BEARING CONE
4	11379	INNER BEARING CUP
5	11381	DUST CAP
6	16094	7/8" SPINDLE WASHER
7	25585	TRIPLE LIP SEAL
8	25586	WEAR SLEEVE
9	41232	1-3/4" SPINDLE X 11.12" LONG
10	30405	6-BOLT MACHINED HUB
11	88142	1/2"-20NF WHEEL BOLT
12	88263	1/8" NPT GREASE FITTING
13	88301	3/16" X 1-1/2" COTTER PIN
14	88340	7/8" NF SLOTTED NUT
15	88363	1/2" NC CENTER LOCK HEX NUT
16	88541	1/2" X 3" NC HEX BOLT

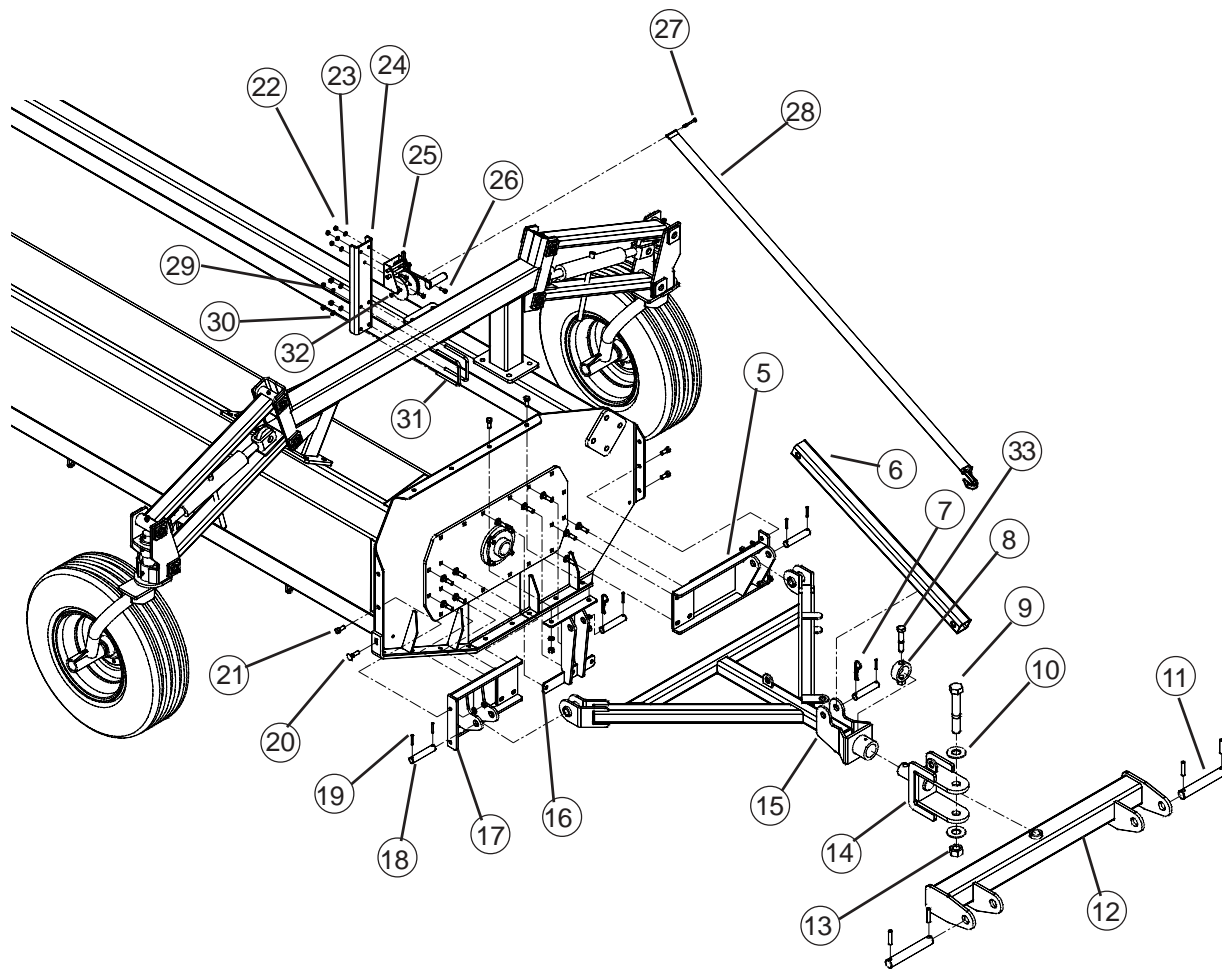
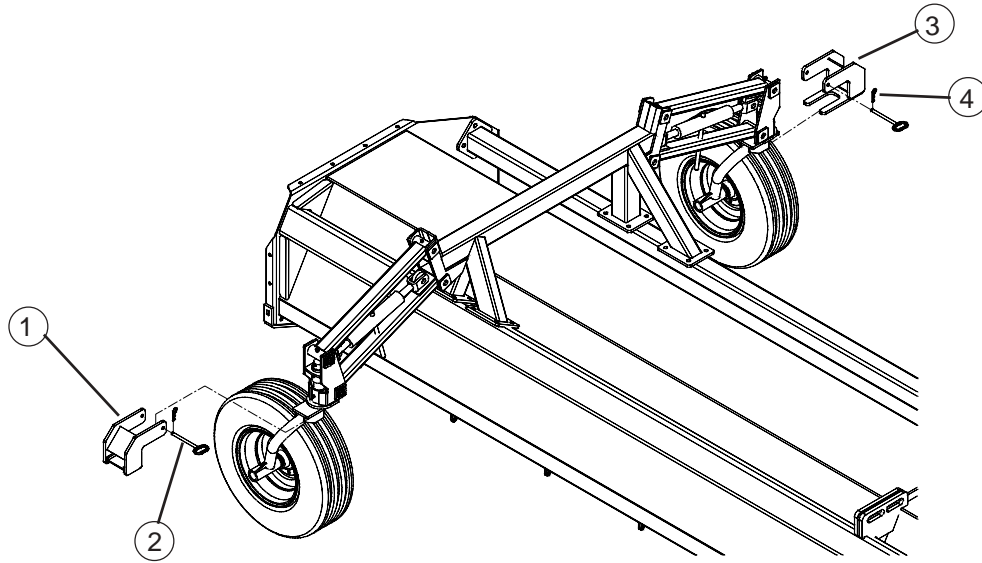


NOTE: ITEM 30 MOUNTS IN THE FRONT SLOT FOR PROPER HITCH HEIGHT.

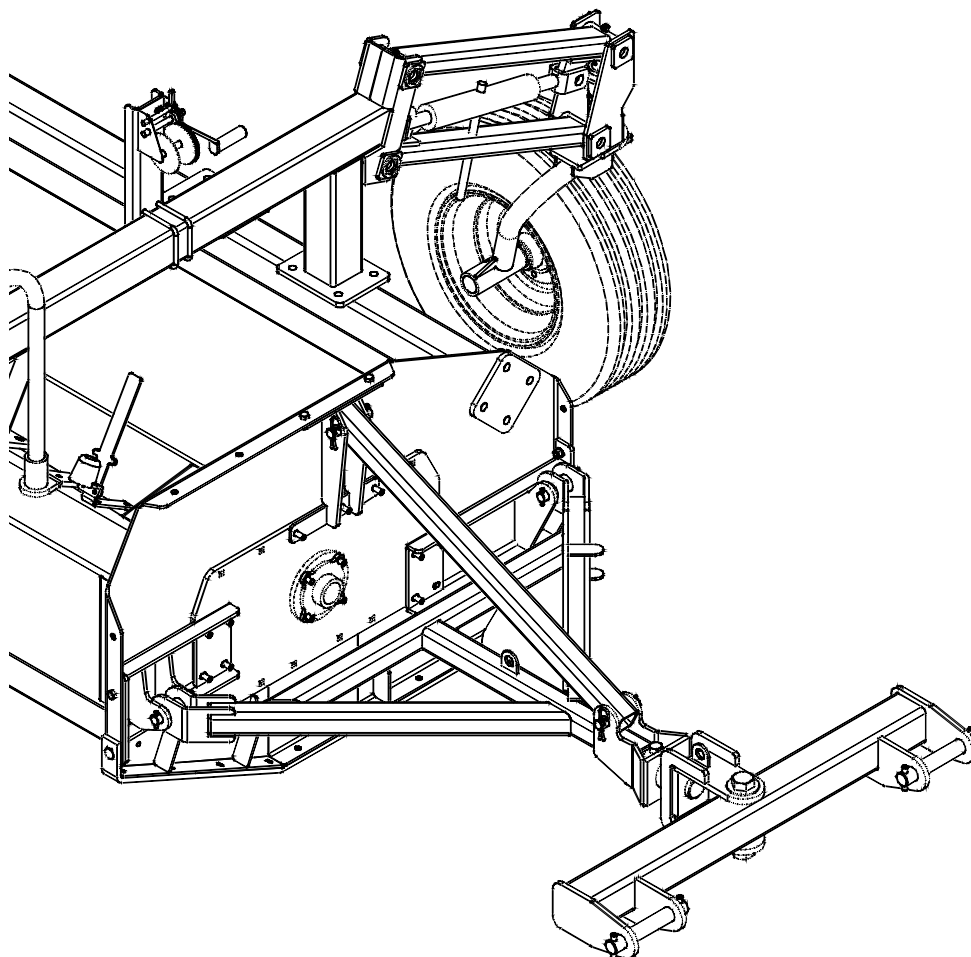
NOTE: HYDRAULIC CYLINDER MOUNTS WITH BUTT END FACING FRONT TO PREVENT DAMAGE TO TIE ROD.

ITEM	PART NO.	DESCRIPTION	ITEM	PART NO.	DESCRIPTION
1	13681	1-1/2" CYLINDER LOCK CHANNEL	22	88617	1" LOCK WASHER
2	24104	ELBOW 8MORB X 6MJ	23	88666	1" X 6-1/2" NC HEX BOLT
	61239	ELBOW 6MORB X 6MJ(SERIAL NO 455118 TO 455632)	24	89040	3/8" X 4" X 7" NC U-BOLT
3	221714	HEADLESS PIN 1" X 3.88"	25	89059	1/2" DIA X 2-1/2" ROLL PIN
4	42484	1/4" X 2-1/4" ROLL PIN	26	200958	3" DIA X 10" HYD CYLINDER SEAL KIT 236576
5	55174	10K SAFETY CHAIN		51239F	3" DIA X 8" HYD CYLINDER SEAL KIT 233842(SERIAL NO 455118 TO 455632)
6	58538	HOSE 1/4" X 84" 6FJX-6FJX	27	233959	BUSHING-UPPER MAST .76x1-1/4ODx2.09
7	58690	ADAPTOR 6MJ X 8MPT	28	234102	1-7/16" DIA LOWER 2PT PIN
8	59185	HYD CYLINDER STOP PACKAGE	29	234145	3/4" X 6" NC EYE BOLT
9	60640	QUICK DISCONNECT COUPLER	30	234325	ANCHOR-FRONT HITCH
10	68057	CAT 1 CLEVIS HITCH	31	234331	HITCH
11	88103	3/8" NC HEX NUT	32	234344	BRACKET WELD-PTO
12	88110	3/4" NC HEX NUT	33	235527	LOWER 2PT MOUNT
13	88125	1" NC HEX NUT		234144	LOWER 2PT MOUNT (SERIAL NO 455118 TO 455632)
14	88130	3/4" LOCK WASHER	34	235954	COMBINATION STRAP
15	88172	1/4" HEX NUT	35	808026	JACK 3000#
16	88262	1/4" LOCK WASHER		24415	JACK 2000#(SERIAL NO 455118 TO 455632)
17	88272	3/4" X 4" NC HEX BOLT	36	915402	5/16" DIA X 2-3/4" LYNCH PIN
18	88285	1/4" X 3" NC HEX BOLT			
19	88362	3/8" LOCK WASHER			
20	88435	1/8" HAIR PIN			
21	88487	3/4" X 8-1/2" NC HEX BOLT			

END TRANSPORT HITCH

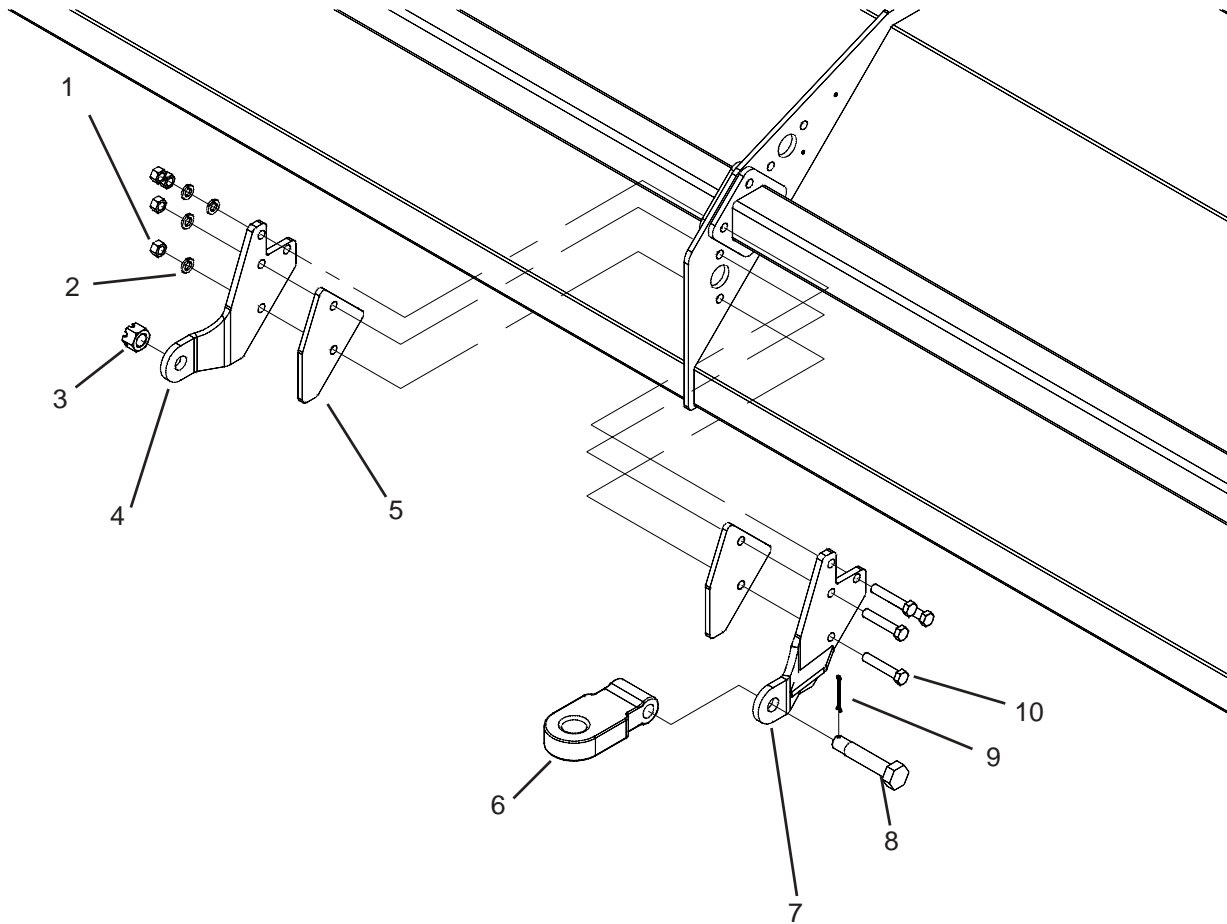


ITEM	PART NO.	DESCRIPTION	ITEM	PART NO.	DESCRIPTION
1	235959	CASTER LOCK FRONT	17	235577	FRONT HITCH MOUNT
2	236543	PIN 1/2x6-1/4	18	221344	HEADLESS PIN 1x5.12
3	235952	CASTER LOCK BACK	19	88628	ROLL PIN 1/4x1-3/4
4	23039	HAIR PIN .14x2.69	20	88714	CARRIAGE BOLT 1/2NCx2
5	235575	REAR HITCH MOUNT	21	88554	1/2NCx1-1/4 BOLT
6	235947	UPPER ARM	22	88127	5/16NC NUT
7	88137	SPRING LOCK PIN 3/16x3-3/4	23	88358	5/16 LOCK WASHER
8	236557	BUSHING 3-1/4ODx2.275IDx1.25	24	236560	WINCH MOUNT
9	88427	BOLT 1-1/4NCx8	25	236566	TRAILER WINCH
10	88602	1-1/4 FLAT WASHER	26	88478	5/16NCx1
11	234102	LOWER 3PT PIN	27	88171	1/4NCx2-1/2
12	235567	LOWER HITCH PIVOT	28	236565	WINCH STRAP 2x12'
13	89050	1-1/4NC LOCK NUT	29	88103	3/8NC NUT
14	236563	PULL HITCH CLEVIS	30	88362	3/8NC LOCK WASHER
15	235937	END TRANSPORT HITCH	31	88385	3/8NCx4x5 U-BOLT
16	235946	UPPER ANCHOR MOUNT	32	88237	1/4NC LOCK NUT
			33	88275	3/4 X 4NC HEX BOLT GR8



REAR PULL HITCH

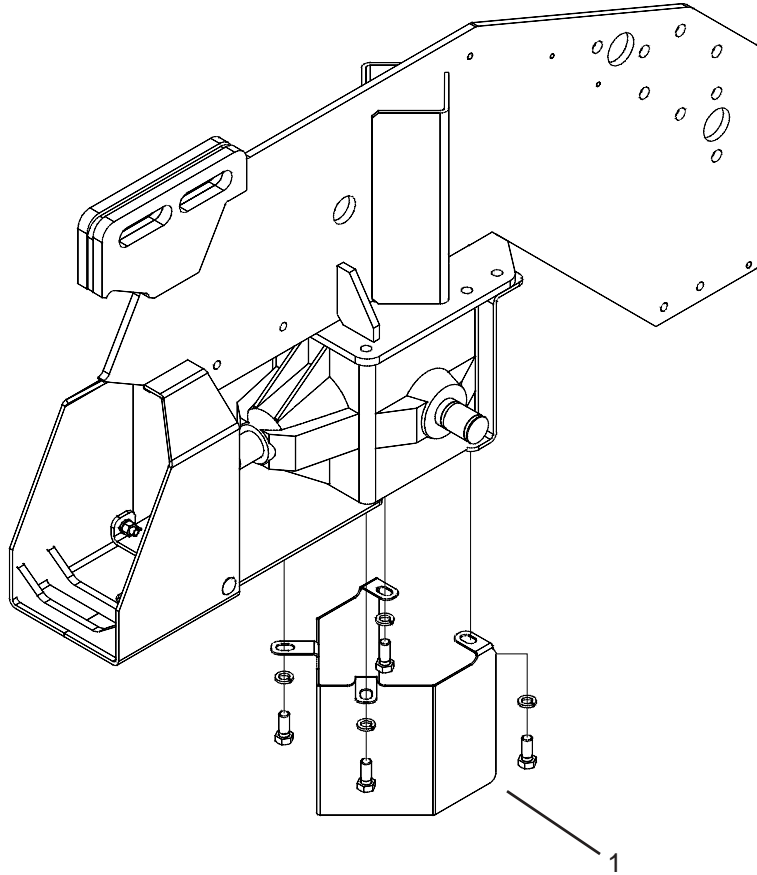
OPTIONAL



ITEM	PART NO.	DESCRIPTION
1	88110	3/4NC NUT
2	88130	3/4 LOCK WASHER
3	88350	1-1/4NC SLOTTED NUT
4	236745	LEFT REAR HITCH
5	236740	SPACER PLATE
6	18237	CAST HITCH
7	236744	RIGHT REAR HITCH
8	11638	HITCH BOLT
9	88133	3/16x2 COTTER PIN
10	88272	3/4NCx4 GR5 BOLT

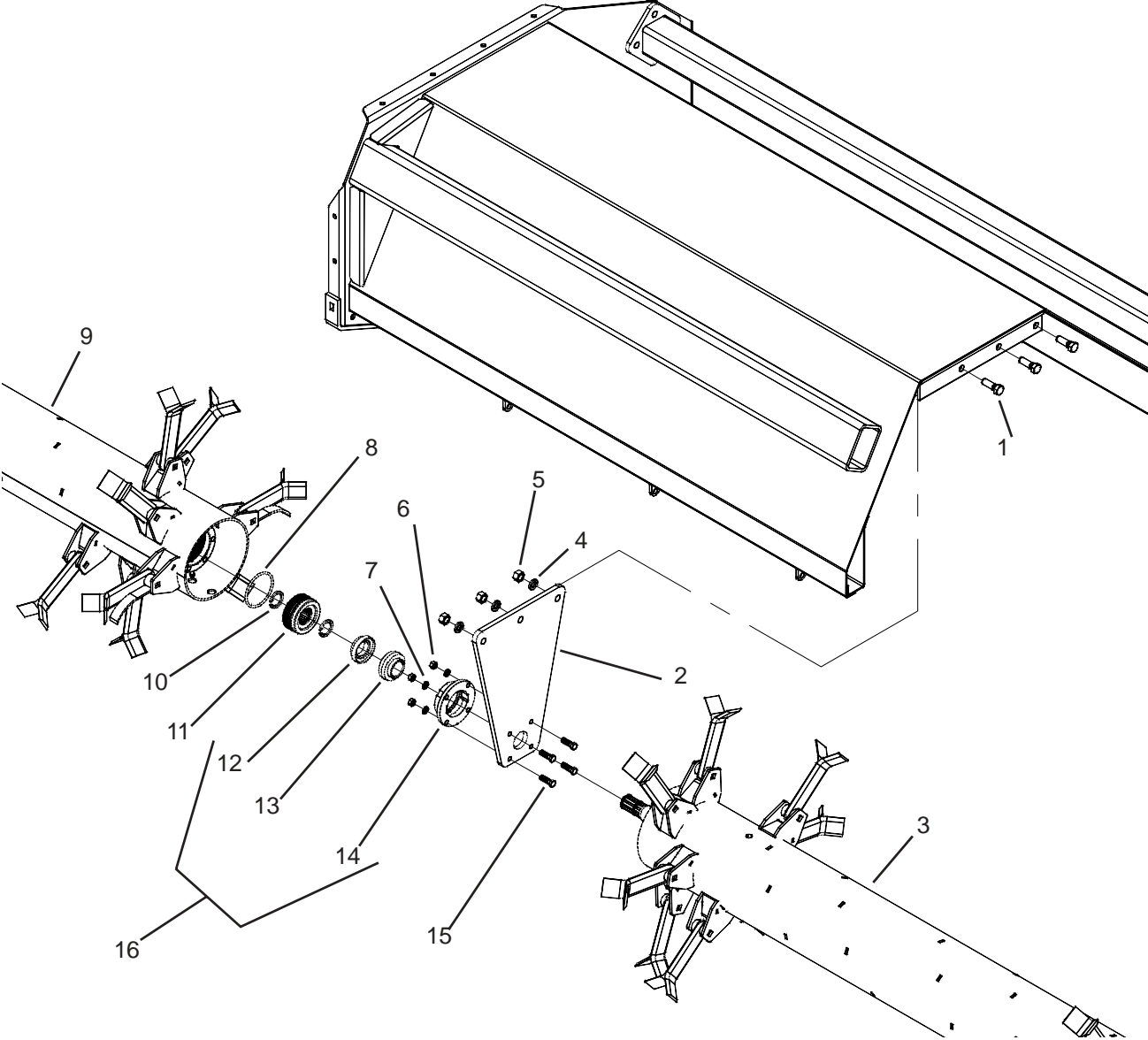
CENTER DIVIDER

OPTIONAL

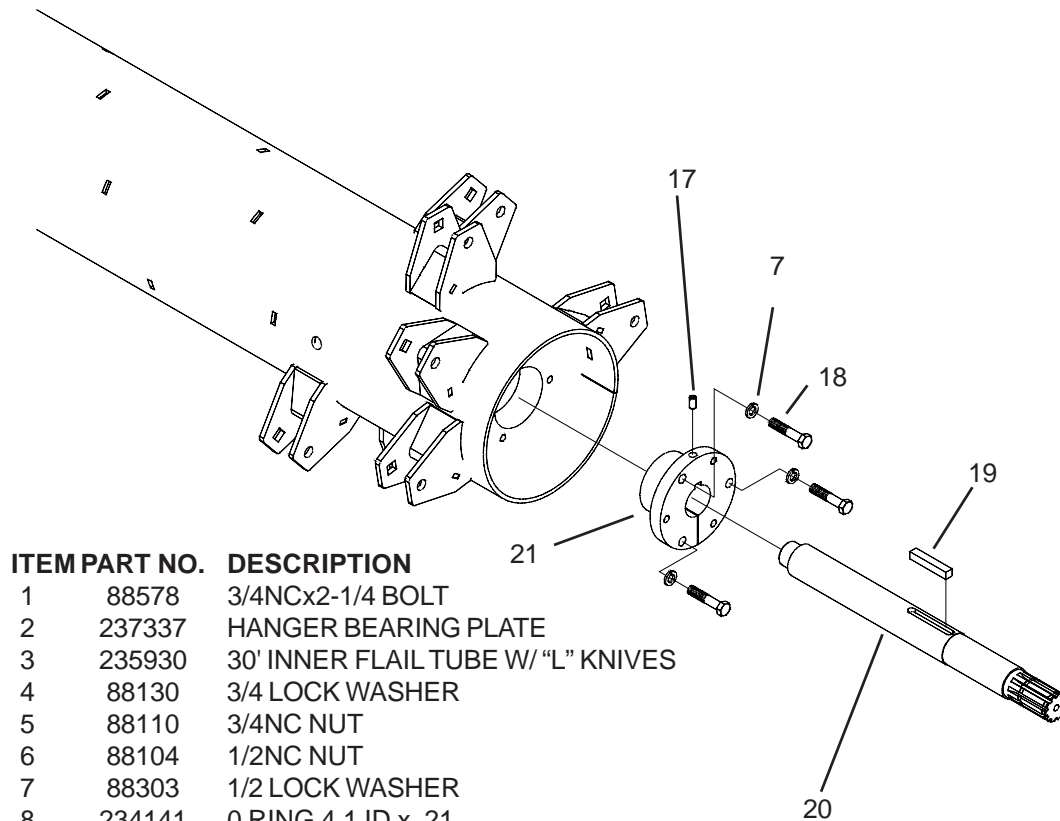


ITEM PART NO.	DESCRIPTION
1 234782	CENTER DIVIDER

30' HANGER BEARING



INTERMEDIATE DRIVE SHAFT

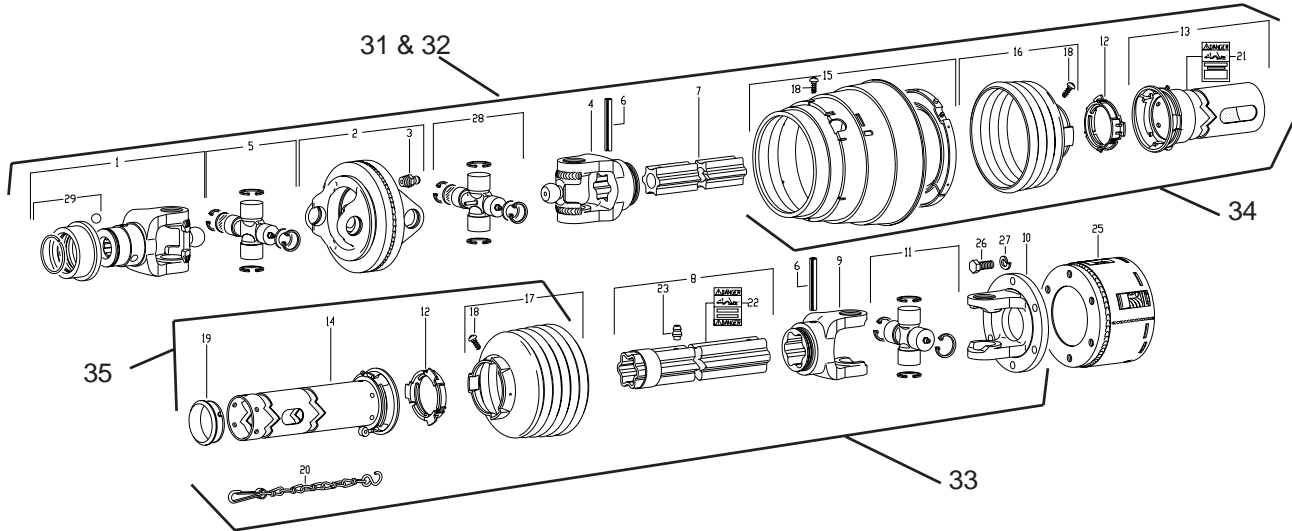


ITEM	PART NO.	DESCRIPTION
1	88578	3/4NCx2-1/4 BOLT
2	237337	HANGER BEARING PLATE
3	235930	30' INNER FLAIL TUBE W/ "L" KNIVES
4	88130	3/4 LOCK WASHER
5	88110	3/4NC NUT
6	88104	1/2NC NUT
7	88303	1/2 LOCK WASHER
8	234141	O RING 4.1 ID x .21
9	237352	30' OUTER FLAIL TUBE W/ "L" KNIVES
10	234142	SNAP RING
11	233982	DRIVE HUB
12	237342	LOCK COLLAR
13	237339	1-15/16 DIA BEARING
14	237341	BEARING HOUSING
15	88517	1/2NCx1-3/4 BOLT
16	237343	BEARING ASSEMBLY (INCLUDES, 12,13,14)
17	89367	3/8NCx3/4 CUP POINT SET SCREW
18	234146	1/2NCx2-1/2 FULL THREAD BOLT
19	237349	1/2x3 SQUARE KEY
20	237338	INTERMEDIATE DRIVE SHAFT
21	237347	2" DRIVE HUB

ASSEMBLY:

- 1.) SLIDE INNER FLAIL TUBE ASSEMBLY ONTO DRIVE HUB - LOCATED ON GEARBOX SHAFT
- 2.) MOUNT BEARING ASSEMBLY TO BEARING PLATE USING 1/2NCx1-3/4 BOLTS, LOCK WASHERS, AND NUTS.
- 3.) SLIDE BEARING ASSEMBLY AND BEARING PLATE ONTO INTERMEDIATE DRIVE SHAFT AND MOUNT BEARING PLATE TO SHREDDER BODY USING 3/4NCx2-1/4 BOLT, LOCK WASHERS, AND NUTS.
- 4.) MAKE SURE INNER FLAIL TUBE IS SLID COMPLETELY ONTO DRIVE HUB - TIGHTEN ECCENTRIC LOCKING COLLAR USING A HAMMER AND PUNCH - ROTATE ECCENTRIC LOCKING COLLAR THE SAME DIRECTION AS FLAIL TUBE ROTATION - TIGHTEN SET SCREWS
- 5.) MOUNT DRIVE HUB ONTO INTERMEDIATE DRIVE SHAFT USING SNAP RINGS - SPREAD GREASE AROUND RUBBER O-RING
- 6.) SIDE OUTER FLAIL TUBE ASSEMBLY ONTO INTERMEDIATE DRIVE HUB - MOUNT END BEARING PLATE AND BEARING - TIGHTEN ECCENTRIC LOCK COLLAR - ROTATE SAME DIRECTION AS FLAIL TUBE ROTATION - TIGHTEN SET SCREWS.

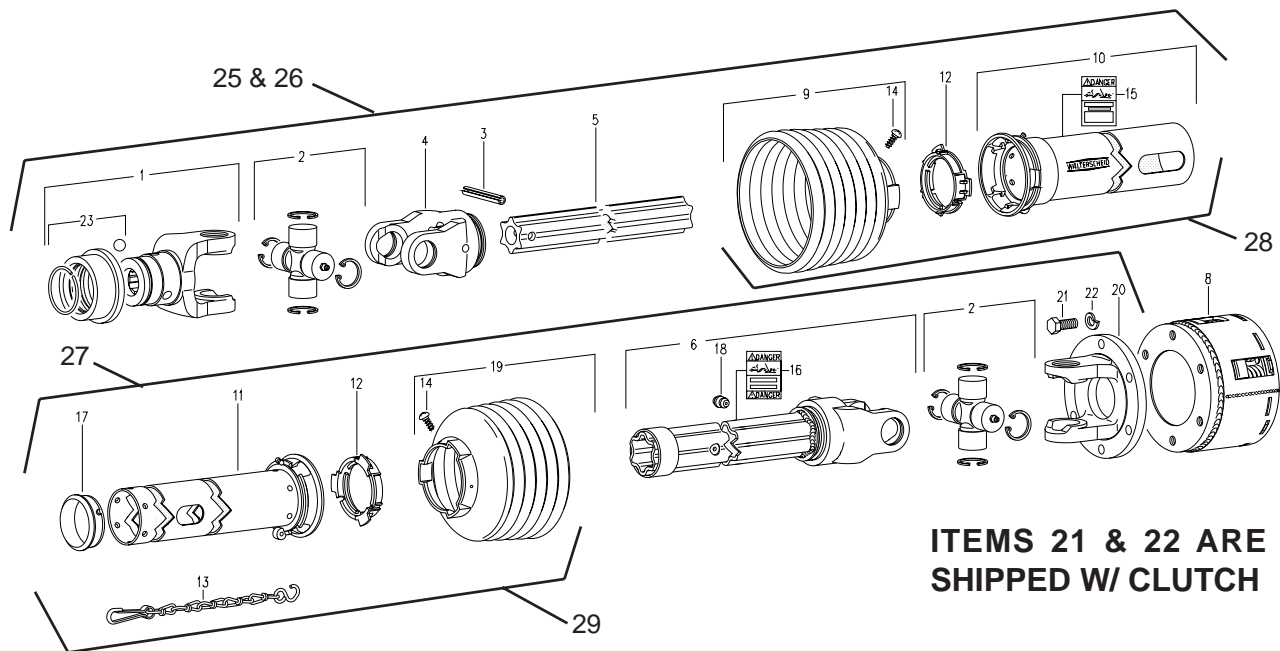
PULL TYPE PTO SHAFT



ITEMS 26 & 27 ARE SHIPPED W/ CLUTCH

1	234386	YOKE 1-3/4"-20SPL
	234377	YOKE 1-3/8"-21 SPL
2	234378	DOUBLE YOKE
4	237364	INBOARD YOKE S4
5	234380	CROSS & BEARING KIT
6	237359	SPRING PIN, 10x90
7	237365	INNER PROFILE S4GA
8	237366	PROFILE S5H & SLV W.A.
9	237367	INBOARD YOKE S5
10	237363	FLANGE YOKE
11	234360	CROSS & BEARING KIT
12	234365	BEARING RING SC25
13	234381	OUT SHIELD TUBE OVL
14	234382	INN SHIELD TUBE RND
15	234383	CV CONE & BRG ASSY
16	234384	SHIELD CONE 4 RIB
17	234370	SHIELD CONE 6 RIB
18	234367	SCREW-IN ITEM 15, 16 & 17
19	234368	SUPPORT BEARING
20	234366	SAFETY CHAIN
21	235523	DECAL OUT - IN ITEM 13
23	234369	ZERK - IN ITEM 8
25	234361	FRICITION/OVERRUNNING CLUTCH
26	234371	BOLT M12x30
27	234372	LOCK WASHER M12
28	234385	CROSS & BEARING KIT
29	234376	AS COL. KIT - IN ITEM 1 (1-3/4")
	234373	AS COL. KIT - IN ITEM 1 (1-3/8")
30	234374	CC. LOCK ASSY. - IN ITEM 25
31	235514	TRACTOR HALP PTO SHAFT 1-3/4"-20SPL
32	235516	TRACTOR HALP PTO SHAFT 1-3/8"-21 SPL
33	235518	CLUTCH HALF PTO SHAFT W/O CLUTCH
34	235519	TRACTOR HALF PTO SHAFT SHIELD
35	235520	CLUTCH HALF PTO SHAFT SHIELD
36	234121	1-3/4" PTO SHAFT COMPLETE W/O CLUTCH
37	234120	1-3/8" PTO SHAFT COMPLETE W/O CLUTCH

3 POINT PTO SHAFT

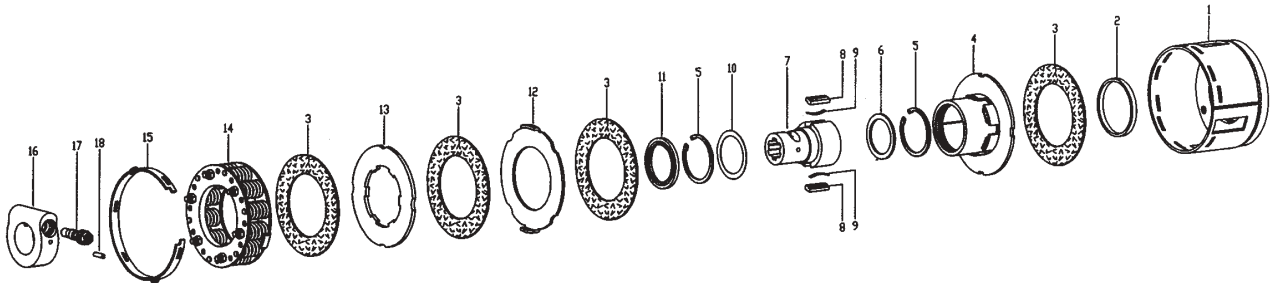


ITEMS 21 & 22 ARE SHIPPED W/ CLUTCH

1	234375	YOKE 1-3/4"-20 SPL ASG
	234359	YOKE 1-3/8"-21 SPL ASG
2	234360	CROSS & BEARING KIT
3	237359	SPRING PIN 10x90
4	237360	INBOARD YOKE S4
5	237361	INNER PROFILE S4GA
6	237362	IB YOKE, PROFILE (S5H) & SLEEVE W.A.
8	234361	FRICION/OVERRUNNING CLUTCH
9	234362	SHIELD CONE 7 RIB
10	234363	OUT. SHIELD TUBE OVL
11	234364	INN. SHIELD TUBE RND
12	234365	BEARING RING SC25
13	234366	SAFETY CHAIN
14	234367	SCREW-IN ITEM 9 & 19
15	235523	DECAL OUT - IN ITEM 10
17	234368	SUPPORT BEARING
18	234369	ZERK - IN ITEM 6
19	234370	SHIELD CONE 6 RIB
20	237363	FLANGE YOKE
21	234371	BOLT M12x30
22	234372	LOCK WASHER M12
23	234376	AS COL. KIT IN ITEM 1 (1-3/4")
	234373	AS COL. KIT IN ITEM 1 (1-3/8")
24	234374	CC LOCK ASSY - IN ITEM 8
25	235513	TRACTOR HALF PTO SHAFT 1-3/4"-20SPL
26	235511	TRACTOR HALF PTO SHAFT 1-3/8"-21 SPL
27	235517	CLUTCH HALF PTO SHAFT W/O CLUTCH
28	235521	TRACTOR HALF PTO SHIELD
29	235522	CLUTCH HALF PTO SHIELD
30	234118	1-3/8" PTO SHAFT COMPLETE W/O CLUTCH
31	234119	1-3/4" PTO SHAFT COMPLETE W/O CLUTCH

PTO CLUTCH EFK/97

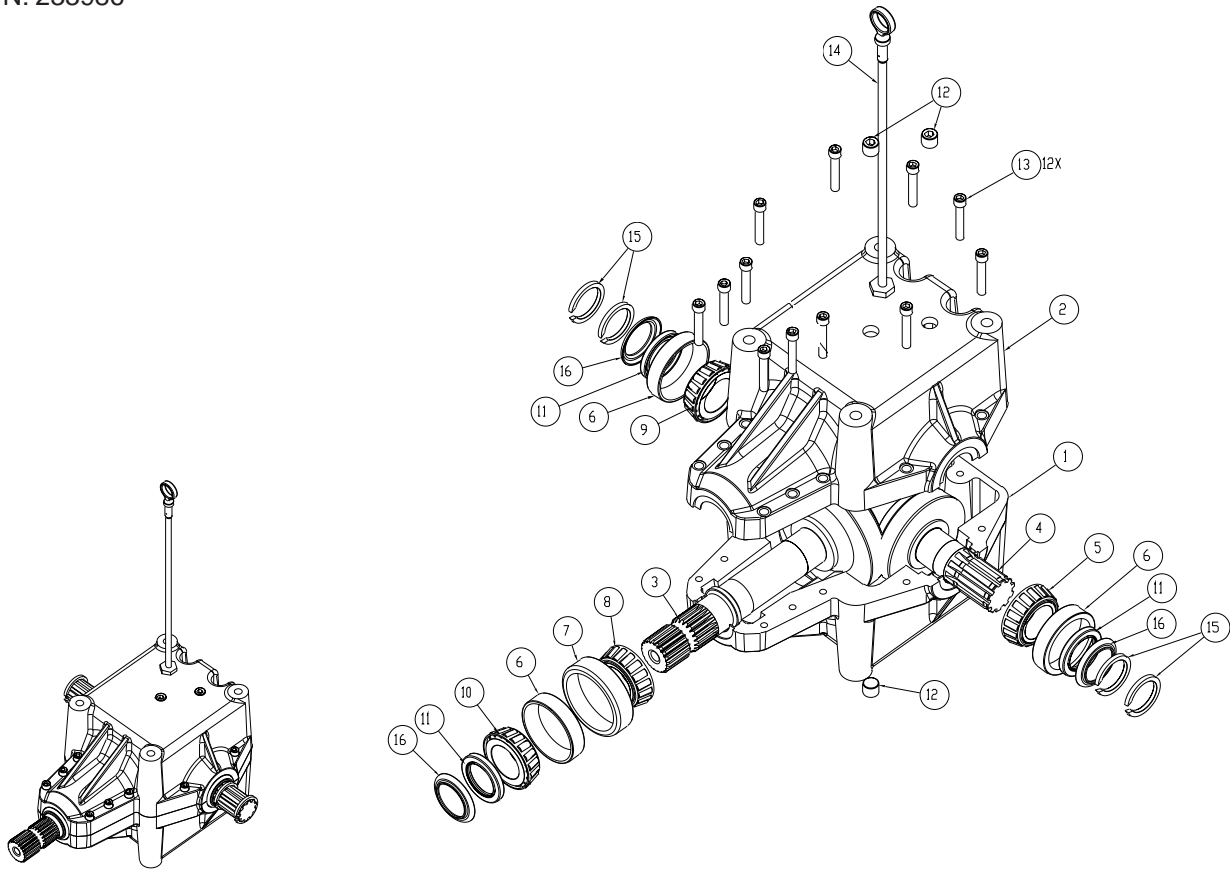
PN: 234361



1	234795	HOUSING
2	235507	WEAR RING
3	234797	FRICTION DISC
4	234794	OVERRUNNING HOUSING
5	235508	RETAINING RING
6	235502	WASHER - 56x72
7	234792	HUB
8	235504	KEY
9	235505	LEAF SPRING
10	235506	WASHER - 59.9x72
11	234796	SEAL RING
12	234799	DRIVE PLATE
13	234798	DRIVE PLATE
14	234800	SPRING PACK
15	235500	SETTING RING
16	235501	CLAMPING RING
17	234374	CLAMPING CONE
18	235503	SPRING PIN - 6x22

GEARBOX 800 SERIES

PN: 233986

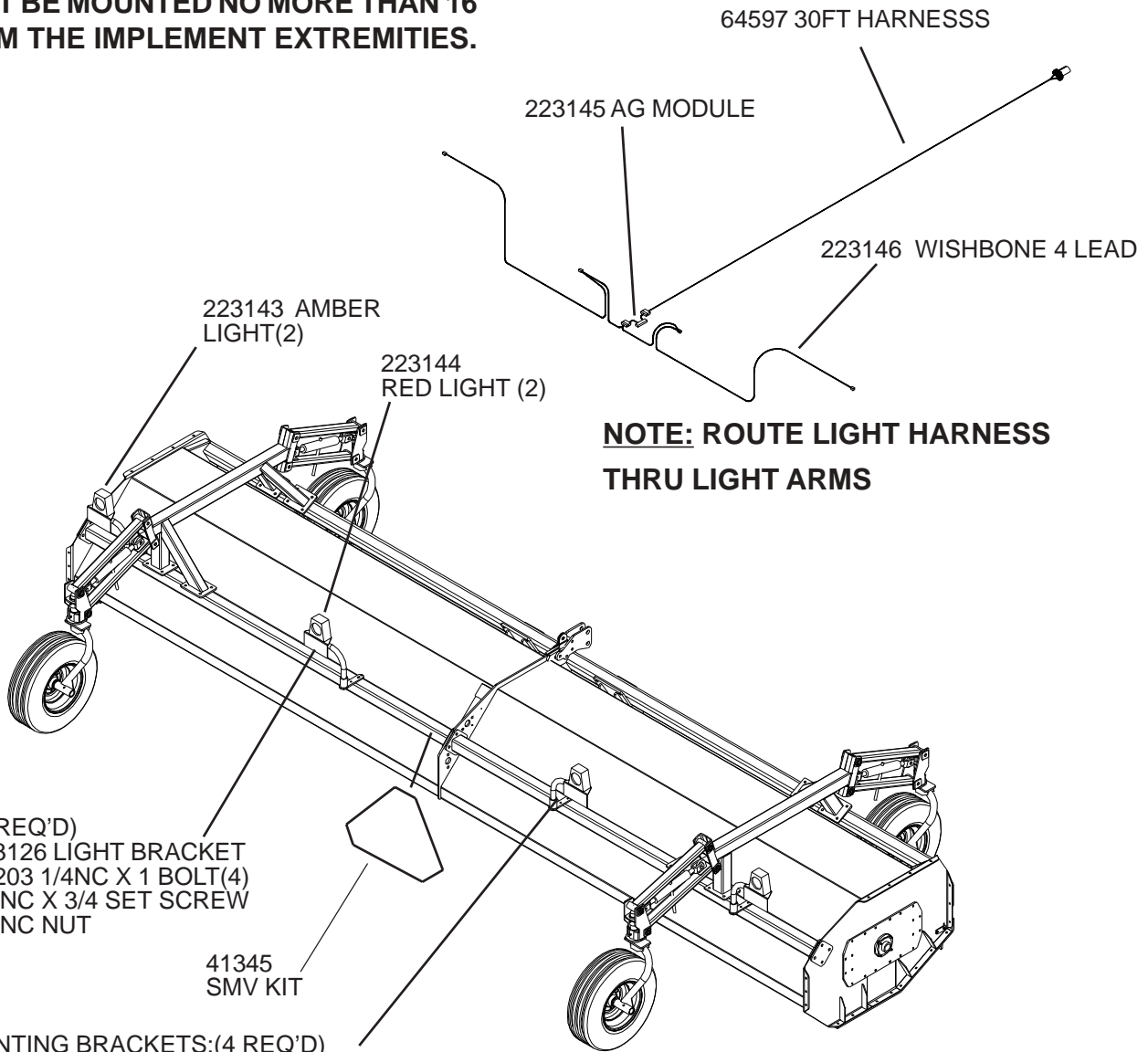


1	234398	CASTING, MACHINED R800 TAP
2	234399	CASTING, MACHINED R800 THRU
3	234400	ASSY, SHAFT/GEAR R600
4	234702	ASSY, CROSS SHAFT/GEAR
5	234703	BEARING, CONE 1.750
6	12104	BEARING, CUP 3.265
7	16084	BEARING, CUP 3.6718
8	16083	BEARING, CONE TMKN #3777
9	12103	BEARING, CONE 25580
10	234708	BEARING, CONE TMKN #25592
11	234709	SEAL, 1.75-2.437-.312 (R) TC
12	234710	PLUG, 1/2-14 NPT SCHD W/3M
13	234711	BOLT, 3/8-16x2.25 SHCS
14	234139	DIPSTICK, R800 1/2-14 NPT
15	234142	SNAP RING - 603493
16	235525	SHIELD STRWRAP 1.75 X 2.25

NOTE: Gear ratio is 1:1.35 (input CCW on stub shaft)
Torque 3/8-16 capscrews (item 13) to 35-40 FT LBS

SAFETY LIGHTS

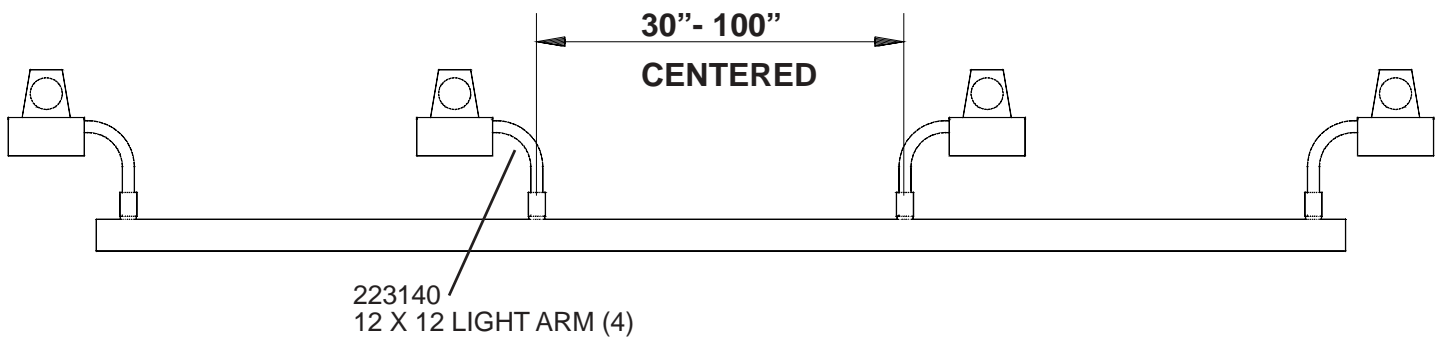
NOTE: MOUNT AMBER LIGHTS AS WIDE AS POSSIBLE. THE AMBER LIGHTS MUST BE MOUNTED NO MORE THAN 16" FROM THE IMPLEMENT EXTREMITIES.



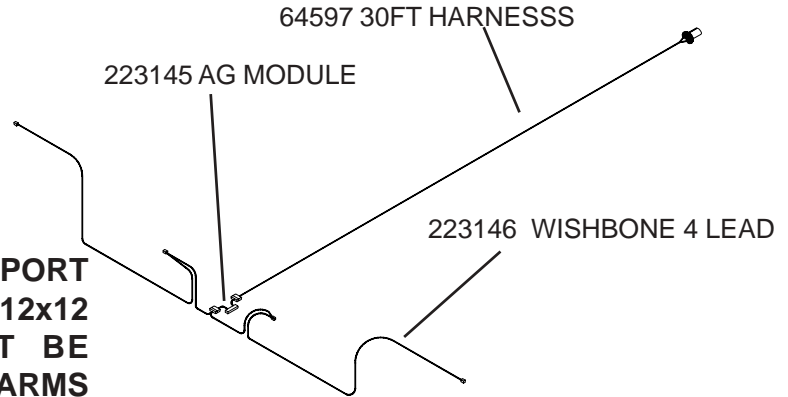
NOTE: ROUTE LIGHT HARNESS THRU LIGHT ARMS

MOUNTING BRACKETS: (4 REQ'D)
 223130 SHORT BASE (2-1/2, 3,4 FRAMES)
 HARDWARE:
 88385 3/8NC X 4 X 4-3/4 U-BOLT

NOTE: MOUNT THE RED LIGHTS AS REARWARD AS PRACTICAL ON THE CENTER FRAME. SPACE EVENLY, 2' TO 5' FROM THE MACHINE CENTER.

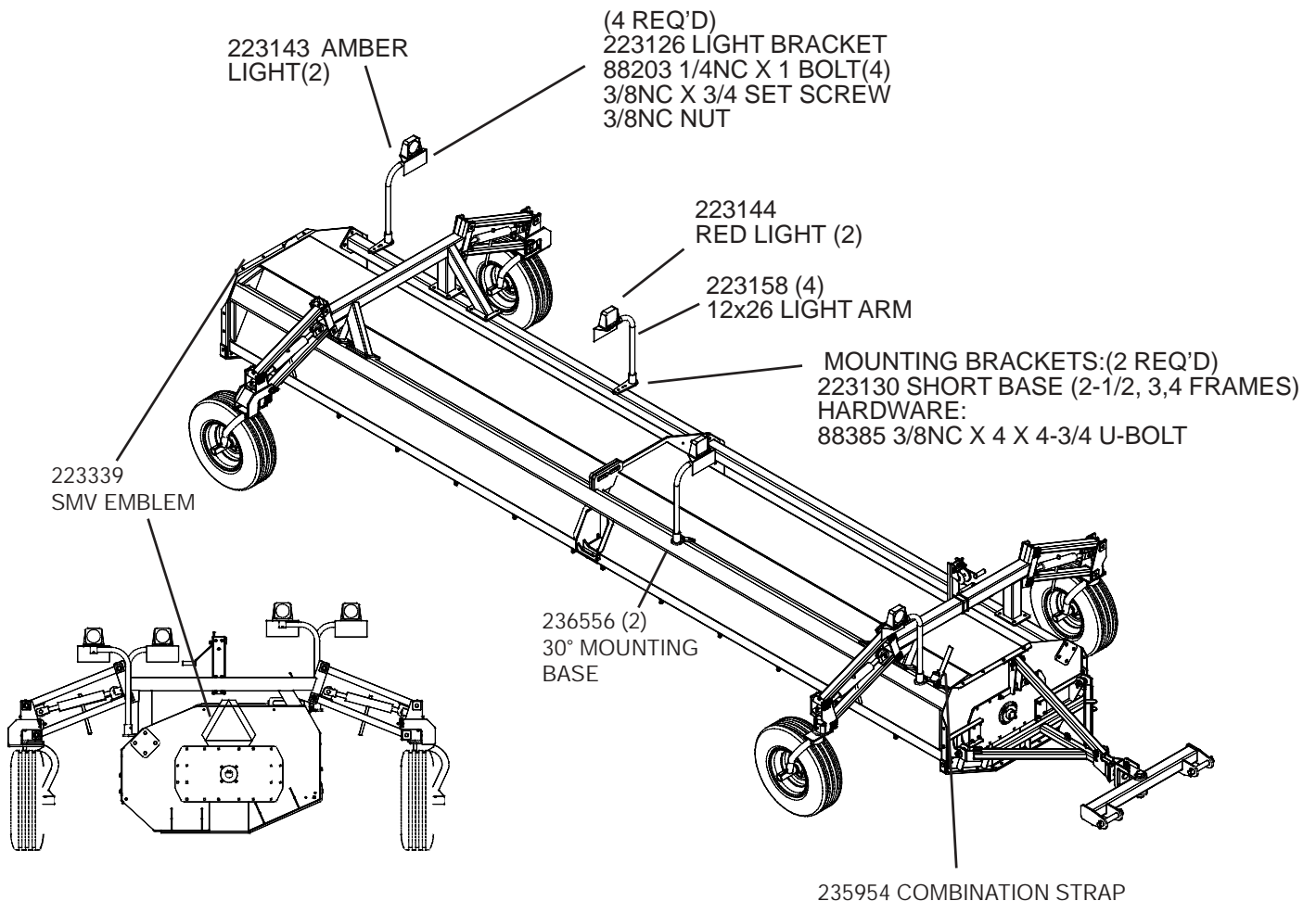


END TRANSPORT SAFETY LIGHTS

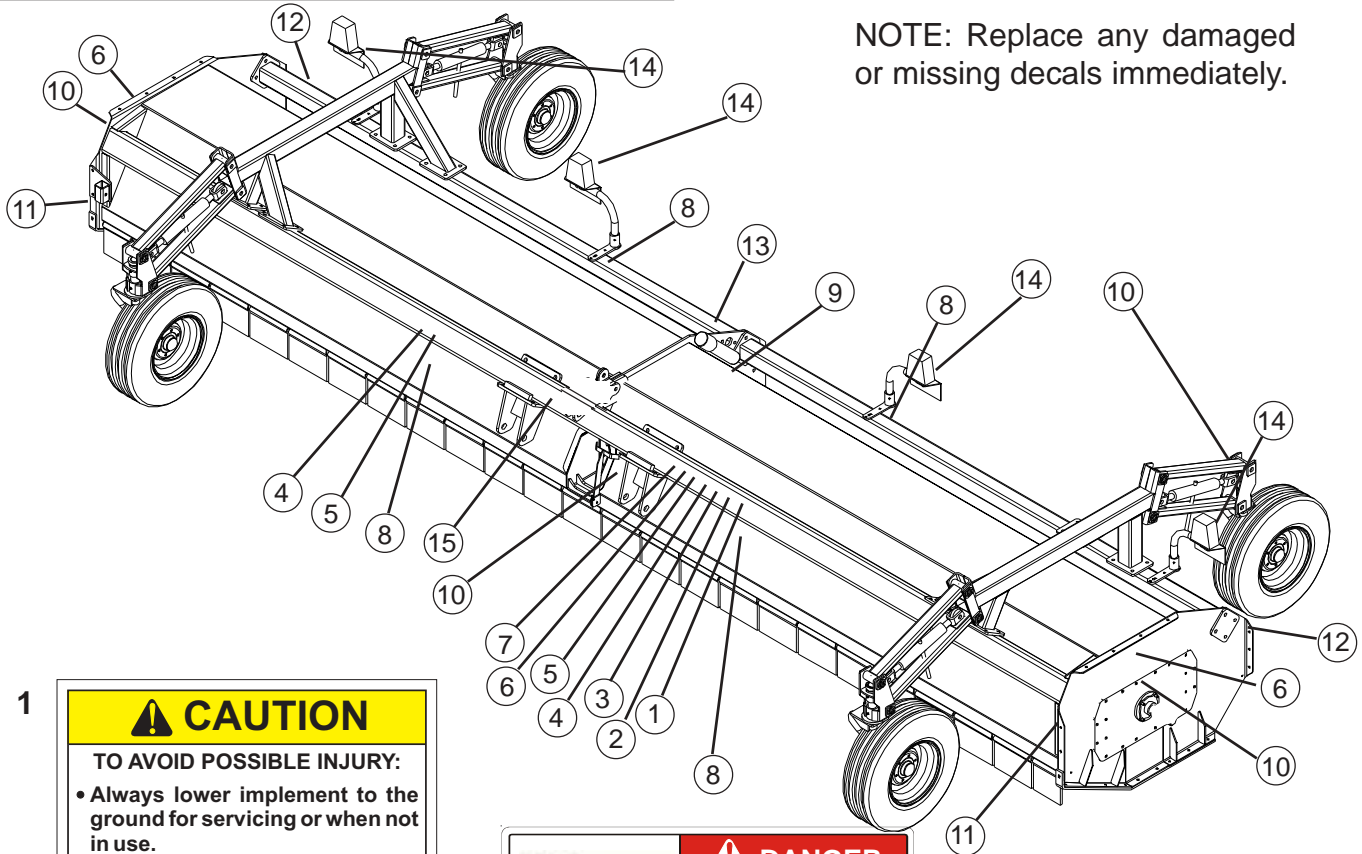


WHEN MOUNTING AN END TRANSPORT HITCH ON EXISTING UNITS, THE 12x12 LIGHT ARMS 223140(4) MUST BE REMOVED AND THE 12x26 LIGHT ARMS ADDED, 223158(4). REMOVE ITEM 223130(2). THIS IS DONE TO KEEP THE LIGHT ARMS RUNNING VERTICAL. MOUNT ALL 4 LIGHTS AS SHOWN. ON UNITS WITH END TRNASPORT HITCH ITEM 235954 IS LOCATED AS SHOWN. TO PREVENT DAMAGE TO LIGHT CORD MAKE SURE IT IS ATTACHED SUCURELY TO SHREDDER BODY.

NOTE: ROUTE LIGHT HARNESS THRU LIGHT ARMS



SAFETY DECAL PLACEMENT



NOTE: Replace any damaged or missing decals immediately.

1

CAUTION

TO AVOID POSSIBLE INJURY:

- Always lower implement to the ground for servicing or when not in use.
- Never allow anyone to ride on implement.
- Keep everyone clear of tractor and implement while in use or while tractor is running.

31926

31926

4

! DANGER

CRUSHING HAZARD

To prevent serious injury or death:

- Do not stand between implement and moving tractor.
- Stop tractor engine and set park brake before installing pins.

222802

2

! CAUTION

1. Read Operator's Manual before using machine.
2. Stop tractor engine, lower machine to ground, place all controls in neutral, set parking brake, remove ignition key and wait for all moving parts to stop before servicing, adjusting, repairing unplugging or fitting.
3. Install and secure all guards before starting.
4. Keep hands, feet, hair and clothing away from moving parts.
5. Do not allow riders.
6. Keep all hydraulic lines, fittings and couplers tight and free of leaks before using.
7. Clean reflectors, SMV and lights before transporting.
8. Install safety locks before transporting or working beneath components.
9. Add extra lights and use pilot vehicle when transporting during times of limited visibility.
10. Use hazard flashers in tractor when transporting.
11. Install safety chain when attaching to tractor.
12. Keep away from overhead electrical lines. Electrocutation can occur without direct contact.
13. Review safety instructions with all operators annually.

SW4

234338

5

! DANGER

THROWN OBJECT HAZARD

To prevent serious injury or death:

- Do not operate unless all guards are installed and in good condition.
- Stop blade rotation if bystanders come within several hundred feet.

M809

234337

3

! WARNING

To avoid Injury, Death or Machine Damage:

- Avoid unsafe operation or maintenance.
- Make sure tractor engine is turned off before performing maintenance.
- Do not operate or work on this machine without reading and understanding the operator's manual.
- If manual is lost, contact your nearest dealer for a new manual.

62503 SERVICE DECAL

62503

6

! DANGER

ROTATING BLADE HAZARD

To prevent serious injury or death from rotating blade:

- Do not go under frame when blades are turning or tractor PTO is engaged. Keep others away.
- Do not service machine while machine is running.
- Keep hands, feet, hair and clothing away from moving parts.

208256

234339



78132



234335



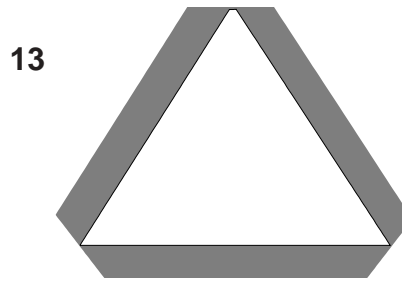
62557

16

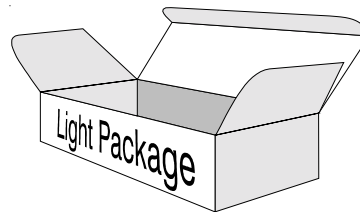


235549 General Safety Decal

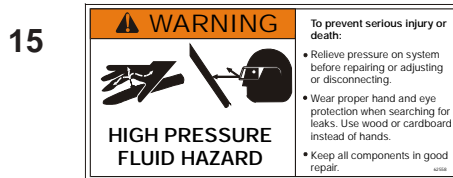
Item 16 to be used in place of items: 1,2,3,4,5,6 and 7.



41345 SMV KIT



223163 CLEARANCE LIGHT PACKAGE (STANDARD)
236559 CLEARANCE LIGHT PACKAGE (END TRANSPORT MODELS ONLY)



62558



22372 AMBER REFLECTOR



22371 RED REFLECTOR