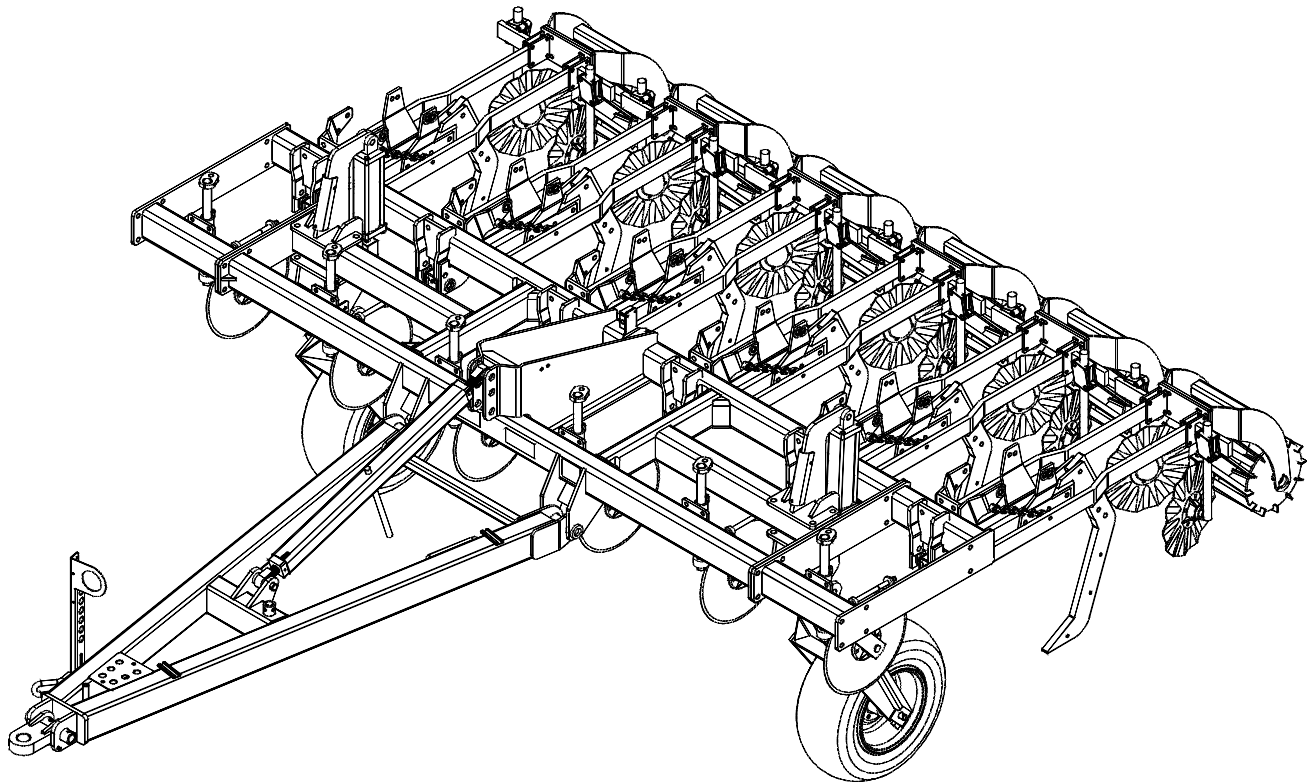




# 357 INLINE RIPPER PARTS



**Serial # 460696 and up**

PRINTED IN USA (74192) 11/15

**WIL-RICH**

PO Box 1030  
Wahpeton, ND 58074  
PH (701) 642-2621  
Fax (701) 642-3372  
[www.wil-rich.com](http://www.wil-rich.com)

# WARRANTY

The only warranty Wil-Rich gives and the only warranty the dealer is authorized to give is as follows:

We warrant products sold by us to be in accordance with our published specifications or those specifications agreed to by us in writing at time of sale. Our obligation and liability under this warranty is expressly limited to repairing, or replacing, at our option, within 12 months after date of retail delivery, any product not meeting the specifications. ***We make no other warranty, express or implied and make no warranty of merchantability or of fitness for any particular purpose.*** Our obligation under the warranty shall not include any transportation charges or costs or installation or any liability for direct, indirect or consequential damage or delay. If requested by us, products or parts for which a warranty claim is made are to be returned transportation prepaid to our factory. Any improper use, operation beyond rated capacity, substitution of parts not approved by us, or any alteration or repair by others in such manner as in our judgment affects the product materially and adversely shall void this warranty. ***No employee or representative is authorized to change this warranty in any way or grant any other warranty.***

Wil-Rich reserves the right to make improvement changes on any of our products without notice.

***When warranty limited or not applicable:*** Warranty on hoses, cylinders, hubs, spindles, engines, valves, pumps or other trade accessories are limited to the warranties made by the respective manufactures of these components. Rubber tires and tubes are warranted directly by the respective tire manufacturer only, and not by Wil-Rich.

Warranty does not apply to any machine or part which has been repaired or altered in any way so as in the our judgment to affect its reliability, or which has been subject to misuse, negligence or accident.

***A Warranty Validation and Delivery Report Form must be filled out and received by Wil-Rich to initiate the warranty coverage.***

## WARRANTY CLAIMS PROCEDURE

1. The warranty form must be returned to Wil-Rich within fifteen (15) working days from the repair date.
2. Parts returned to Wil-Rich without authorization will be refused. The parts must be retained at the dealership for ninety (90) days after the claim has been filed. If the Service Department would like to inspect the parts, a packing slip will be mailed to the dealer. The packing slip must be returned with the parts. The parts must be returned prepaid within thirty (30) days of receiving authorization. After the parts are inspected and warranty is verified, credit for the return freight will be issued to the dealer.
3. Parts that will be scrapped at the dealership will be inspected by Wil-Rich Sales Representatives, District Sales Managers or Service Representatives within the ninety (90) day retaining period.

## ORIENTATION

Any reference to left (L) or right (R) sides or components is to be understood as being viewed from behind the implement and looking forward.

## SERIAL NUMBER BREAK

Every implement has a serial number located on the frame. These serial numbers are consecutively assigned to the implements as they are manufactured. To aid in part ordering, we reference the serial number at the point the change occurred to provide an accurate means of determining the proper parts.

## MODIFICATIONS

It is the policy of Wil-Rich Operations to improve its products whenever possible and practical to do so. We reserve the right to make changes, improvements, and modifications at any time without incurring the obligation to make such changes, improvements and modifications on any equipment sold previously.

## ABBREVIATIONS

<b>ASSY</b> .....	<b>Assembly</b>
<b>BLD</b> .....	<b>Blade</b>
<b>BRKT</b> .....	<b>Bracket</b>
<b>CTR</b> .....	<b>Center</b>
<b>GR</b> .....	<b>Grade of Bolt</b>
<b>HD</b> .....	<b>Heavy Duty</b>
<b>HDWE</b> .....	<b>Hardware</b>
<b>MF</b> .....	<b>Main frame</b>
<b>MTG</b> .....	<b>Mounting</b>
<b>NC</b> .....	<b>National Coarse Thread</b>
<b>NF</b> .....	<b>National Fine Thread</b>

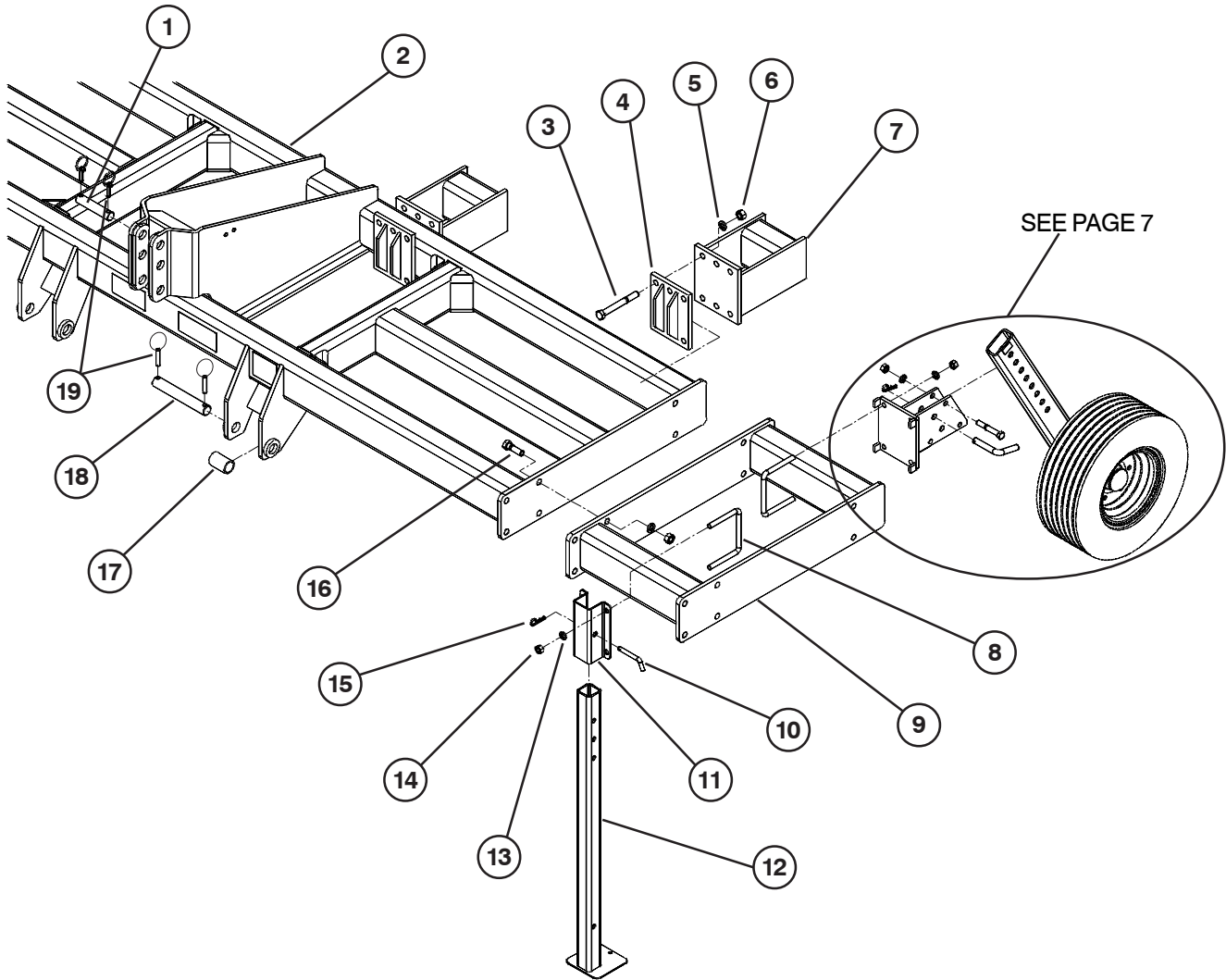
<b>MAIN FRAME</b> .....	<b>4-6</b>
<b>GAUGE WHEELS</b> .....	<b>7</b>
<b>COULTER CUTTERS</b> .....	<b>8</b>
<b>PULL HITCH</b> .....	<b>9</b>
<b>LIFT STATION</b> .....	<b>10</b>
<b>YOKE HUB ASSEMBLY</b> .....	<b>11</b>
<b>HEAVY DUTY GAUGE WHEEL</b> .....	<b>12</b>
<b>SHANK ASSY</b> .....	<b>13,14</b>
<b>SOLID MOUNT SHANK ASSY</b> .....	<b>15</b>
<b>SLOT TILL GANG ASSY</b> .....	<b>16,17</b>
<b>DISC LEVELER</b> .....	<b>18</b>
<b>MINIMAL DIST SHANK &amp; PTS</b> .....	<b>19</b>
<b>PARABOLIC SHK &amp; PTS, 7"FRWR</b> ....	<b>20</b>
<b>LIFT STATION HYDRAULICS</b> .....	<b>21</b>
<b>12 SHANK MAIN LIFT HYD</b> .....	<b>22</b>
<b>12 SHANK FOLDING HYD</b> .....	<b>23</b>
<b>8 SHANK FOLDING HYD</b> .....	<b>24</b>
<b>DECALS</b> .....	<b>25,26</b>
<b>SAFETY LIGHTS</b> .....	<b>27,28,29</b>

NOTE: Standard nuts and lock washers are not called out. Anything other than standard will be called out.

### STANDARD NUTS AND LOCK WASHERS

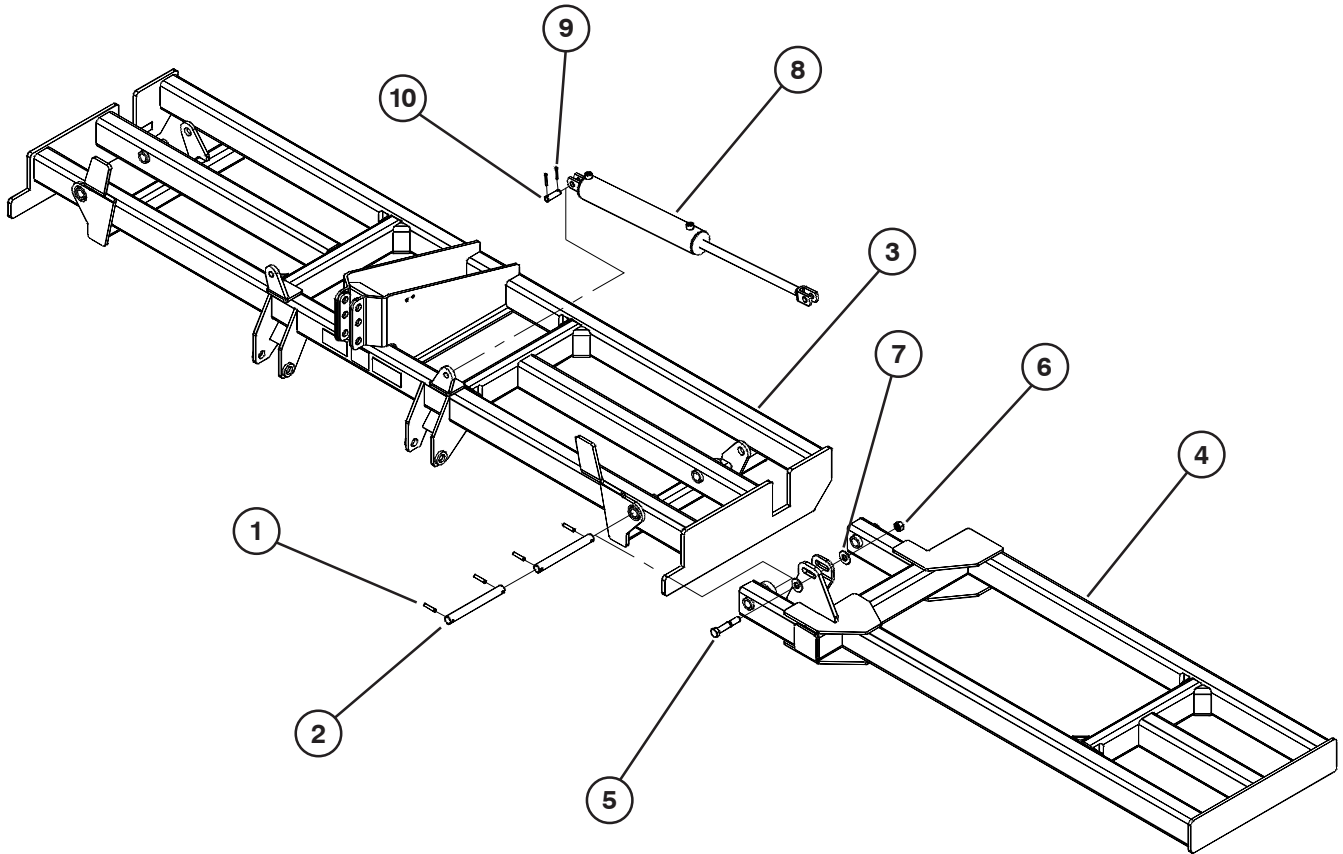
881721/4NC Nut88262	1/4 Lock Washer
881033/8NC Nut88362	3/8 Lock Washer
881041/2NC Nut88303	1/2 Lock Washer
881265/8NC Nut88129	5/8 Lock Washer
881103/4NC Nut88130	3/4 Lock Washer
883717/8NC Nut88341	7/8 Lock Washer

# MAIN FRAME 4,5,6,7&8 SHANK



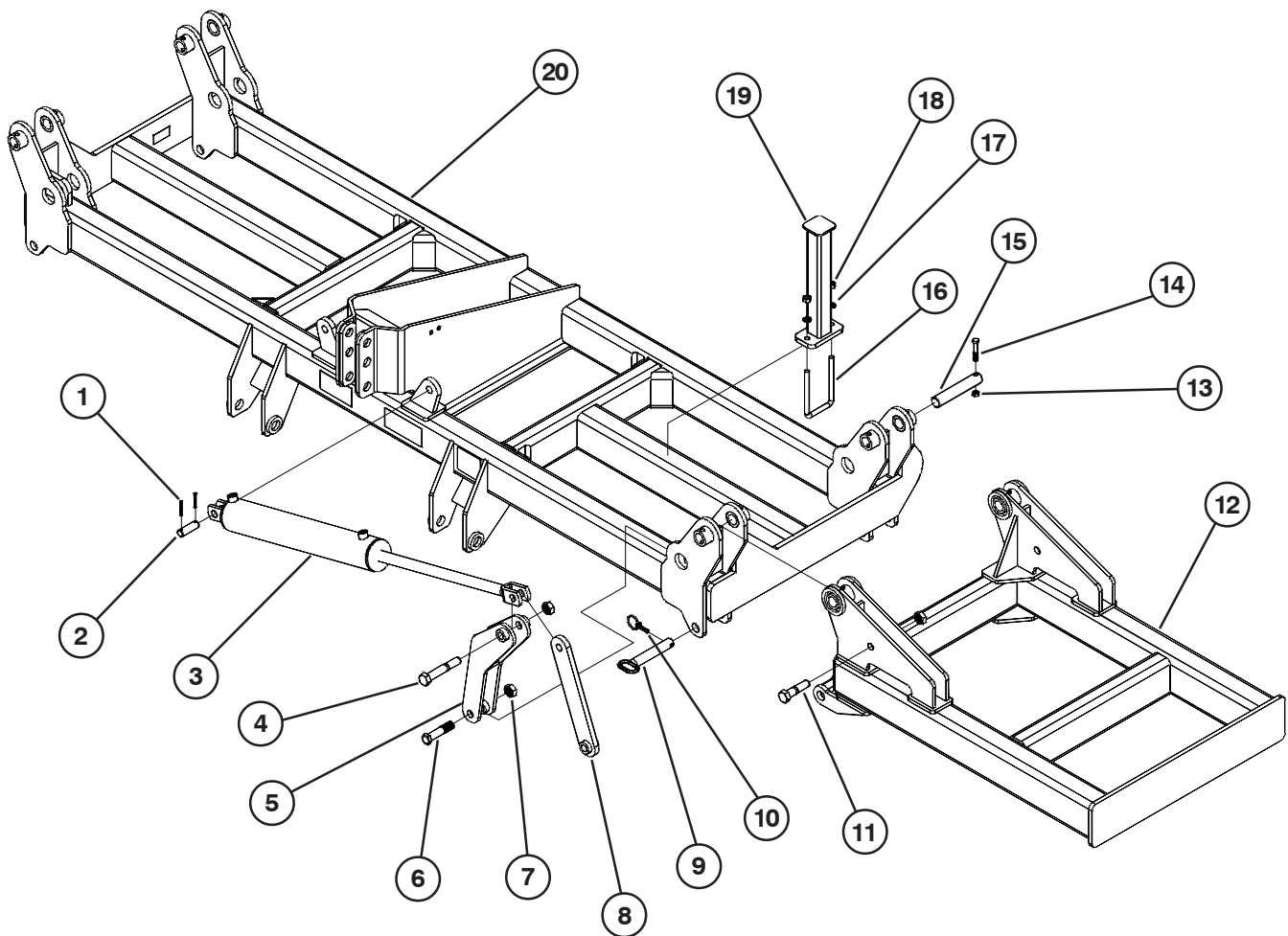
Item	Part No.	Description	Item	Part No.	Description
1	234390	UPPER 3PT PIN 1-1/4x5.91	16	88404	3/4NCx2-1/2 BOLT
2	234234	357 MAIN FRAME 4 THRU 7 SHANK	17	62452	SPACER 1-7/8ODx1.5
	233583	357 MAIN FRAME 8 SHANK 30"	18	234102	LOWER 3 PT PIN 1-7/16x9.53
3	88600	3/4NCx6-1/2 GR8 BOLT	19	32990	7/16x1-1/2 CLICK PIN
4	62323	BACKING PLATE			
5	88130	3/4 LOCK WASHER			
6	88110	3/4NC NUT			
7	62318	SET BACK 12"			
8	89093	5/8NCx6x5-1/2 U-BOLT			
9	234230	1'9" FRAME EXTENSION			
	234232	2'8" FRAME EXTENSION			
10	234811	1/2x4 BENT PIN			
11	59008	PARKING STAND RETAINER			
12	58999	PARKING STAND LEG			
13	88129	5/8 LOCK WASHER			
14	88126	5/8NC NUT			
15	23039	2.69" COTTER PIN			

# MAIN FRAME & WING 12 SHANK



Item	Part No.	Description
1	89059	Roll Pin 1/2x2-1/2
2	235992	Headless Pin 1-1/2x12
3	235964	357 Main Frame for 12 shank 30
4	235971	3 Shank Wing Left
	236509	3 Shank Wing Right
5	88670	BOLT 1NCx5-1/2 GR5
6	89075	NUT 1NC
7	88196	1" FLAT WASHER
8	12062F	5x24 HYD CYLINDER
	233731	5" SEAL KIT
9	42484	ROLL PIN 1/4x2-1/4
10	42473	HEADLESS PIN 1x2-3/8

# MAIN FRAME & WING 8 SHANK 30 FF

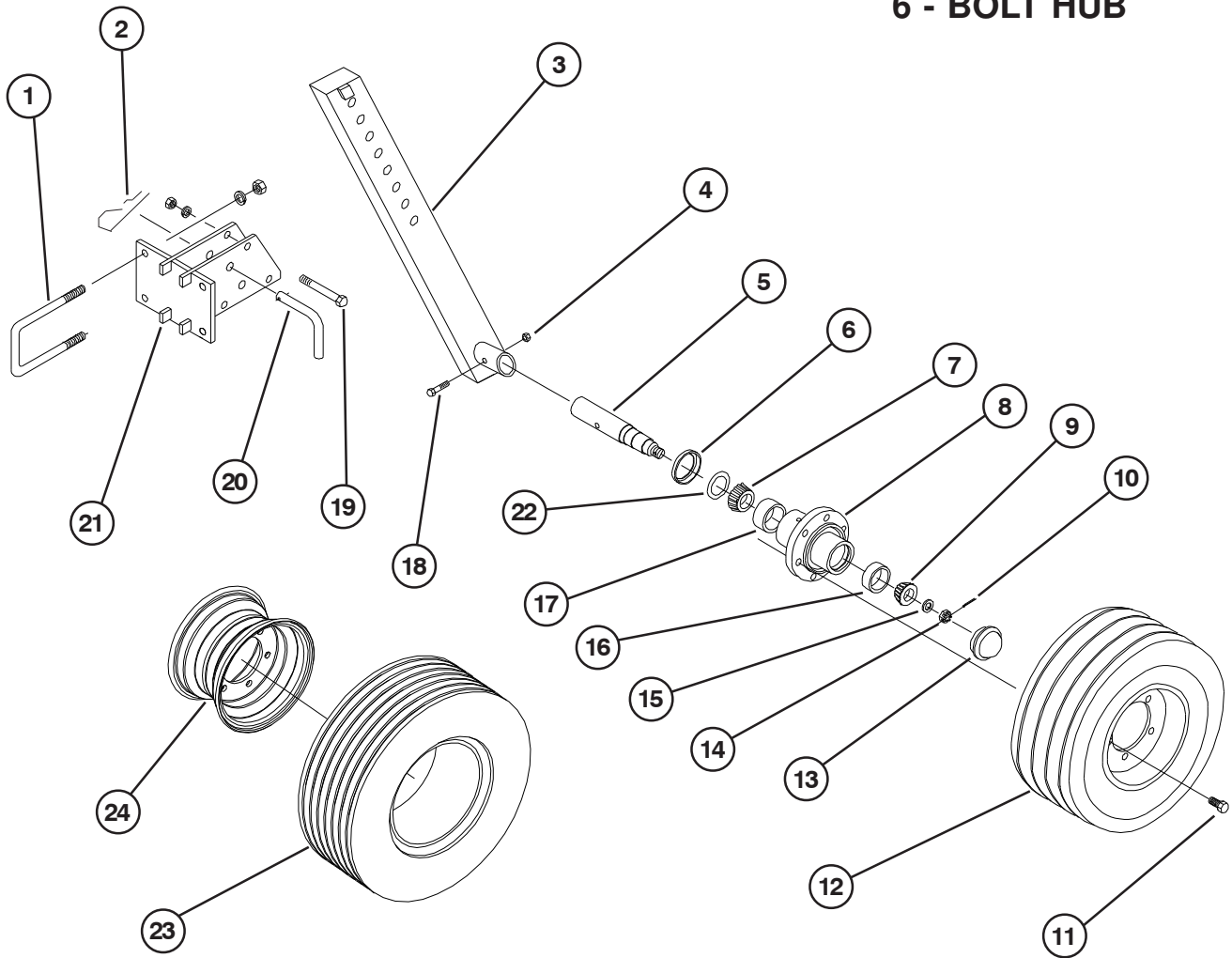


Item	Part No.	Description
1	42484	ROLL PIN 1/4x2-1/4
2	42473	HEADLESS PIN 1x2-3/8
3	51226F	4x24 HYD CYLINDER
	233730	4" SEAL KIT
4	88264	1NCx6 GR5 BOLT
5	236533	PIVOT ARM
6	88580	1NCx4-1/2 GR5 BOLT
7	88348	1NC LOCK NUT
8	236536	LINK ARM
9	235569	HITCH PIN 1-1/4x6-3/8
10	32990	CLICK PIN 7/16x1-1/2
11	88398	1NCx4 GR5 BOLT
12	236511	2 SHANK WING (FITS BOTH LEFT & RIGHT)
13	88363	1/2NC LOCK NUT
14	88541	1/2NCx3 GR5 BOLT
15	236541	WING PIVOT PIN 1-1/2x8-1/4
16	89097	5/8NCx4x7-1/4 U-BOLT
17	88129	5/8 LOCK WASHER
18	88126	5/8NC NUT
19	236540	2 SHANK WING REST
20	236505	8 SHANK MAIN FRAME

# GAUGE WHEEL

## BOLT ON SPINDLE

### 6 - BOLT HUB



Item	Part No.	Description
1	89093	5/8NCx6x5-1/2 U-Bolt
2	23039	Hair Pin Cotter 2.69
3	66146	Gauge Wheel Leg
4	88660	7/16NC Lock Nut
5	41232	1-3/4 Spindle(LS7593F-04)
6	25585	Triple Lip Seal
7	11378	1.50 Bore Bearing Cone (LM29749)
8	30405	6Bolt Hub w/Cups (Includes items 16, 17)
9	10345	1.25 Bore Bearing Cone (LM67048)
10	88301	3/16x1-1/2 Cotter Pin
11	88142	1/2NFx1 Wheel Bolt
12	66145	20.5x10x8 10 Ply Wheel Assy
13	11381	Dust Cap
14	88340	7/8NF Slotted Nut
15	16094	Spindle Washer 7/8ID
16	10344	2.32OD Bearing Cup (LM64010)

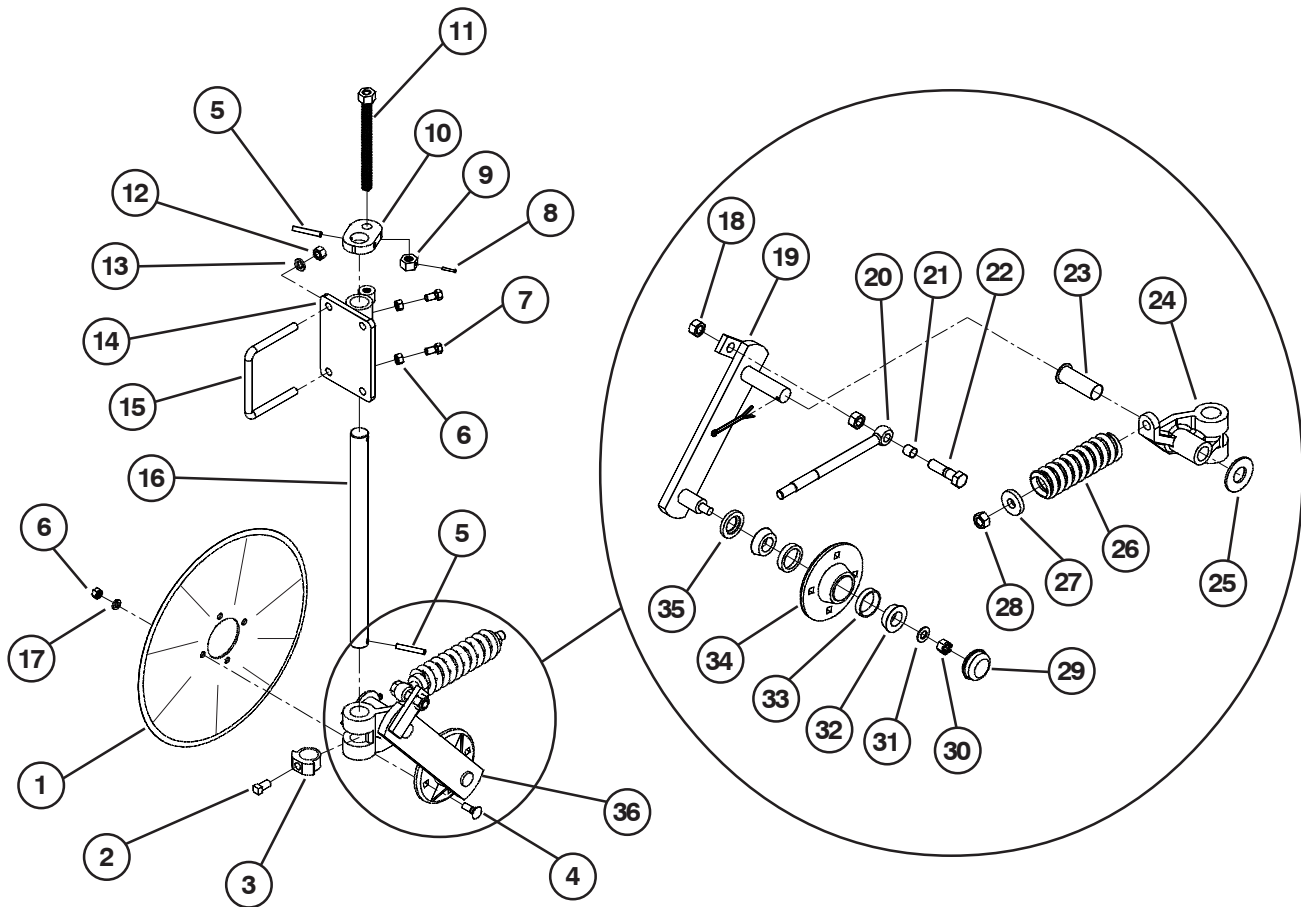
Item	Part No.	Description
17	11379	2.563OD Bearing Cup (LM29710)
18	88674	7/16NCx2-3/4 GR5 Bolt
19	88298	5/8NCx4 GR5 Bolt
20	23096	Lock Pin 3/4x3-19/32
21	61018	Gauge Wheel Mount
22	25586	Wear Sleeve
23	243855	Tire 20.5 x 10 x 8 10ply
24	243856	Rim 10 x 6 x 6 Bolt Gray

NOTE: Standard nuts and lock washers are not called out. Anything other than standard will be called out.

#### STANDARD NUTS AND LOCK WASHERS

88172	1/4NC Nut	88262	1/4 Lock Washer
88103	3/8NC Nut	88362	3/8 Lock Washer
88104	1/2NC Nut	88303	1/2 Lock Washer
88126	5/8NC Nut	88129	5/8 Lock Washer
88110	3/4NC Nut	88130	3/4 Lock Washer
88371	7/8NC Nut	88341	7/8 Lock Washer

# COULTER CUTTER

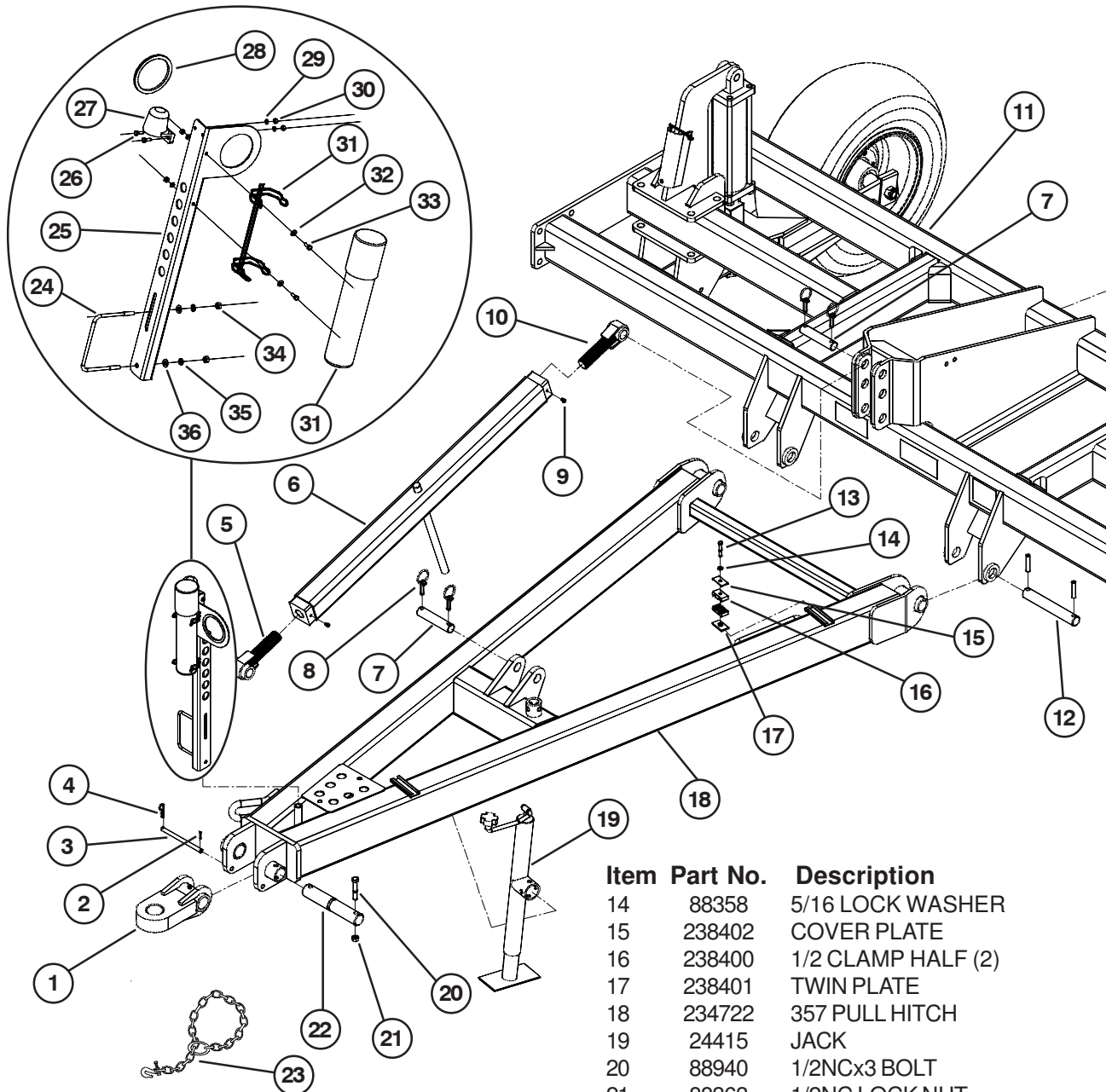


Item	Part No.	Description
1	234261	20" RIPPLE BLADE
2	89382	5/8NCx1 SET SCREW
3	234262	CLYMER LOCKING COLLAR
4	88873	1/2NCx1-1/2 CARRIAGE BOLT
5	88770	3/8x2-1/2 ROLL PIN
6	88104	1/2NC LOCK NUT
7	88446	1/2NCx1 SQ HEAD SET SCREW
8	88856	3/16x1-1/8 ROLL PIN
9	234249	3/4-6 ACME NUT W/ HOLE
10	234251	BRIDGE PLATE
11	234248	3/4-6x9 ACME ADJUSTMENT BOLT
12	88126	5/8NC NUT
13	88129	5/8 LOCK WASHER
14	234246	MOUNTING BRACKET
15	89093	5/8NCx6x5-1/2 U-BOLT
16	234250	1-1/2 DIA SHAFT
17	88303	1/2 LOCK WASHER
18	88123	3/4NF NUT
19	234257	SWING ARM
20	234265	SPRING ROD
21	234263	NYLON BUSHING
22	88119	3/4NFx3 BOLT
23	234258	FLANGED BUSHING
24	234259	SPRING BUSHING CASTING
25	88602	1-1/4 FLAT WASHER

Item	Part No.	Description
26	234260	COULTER SPRING
27	236553	SPRING BUSHING
28	88356	3/4NC LOCK NUT
29	234256	DUST CAP
30	88558	5/8NF SLOTTED NUT
31	19949	3/4 SPINDLE WASHER
32	10345	1-1/4 ID BEARING CONE
33	10344	2.328 BEARING CUP
34	234255	4-BOLT HUB
35	234252	GREASE SEAL
36	234264	COLTER CUTTER ASSY



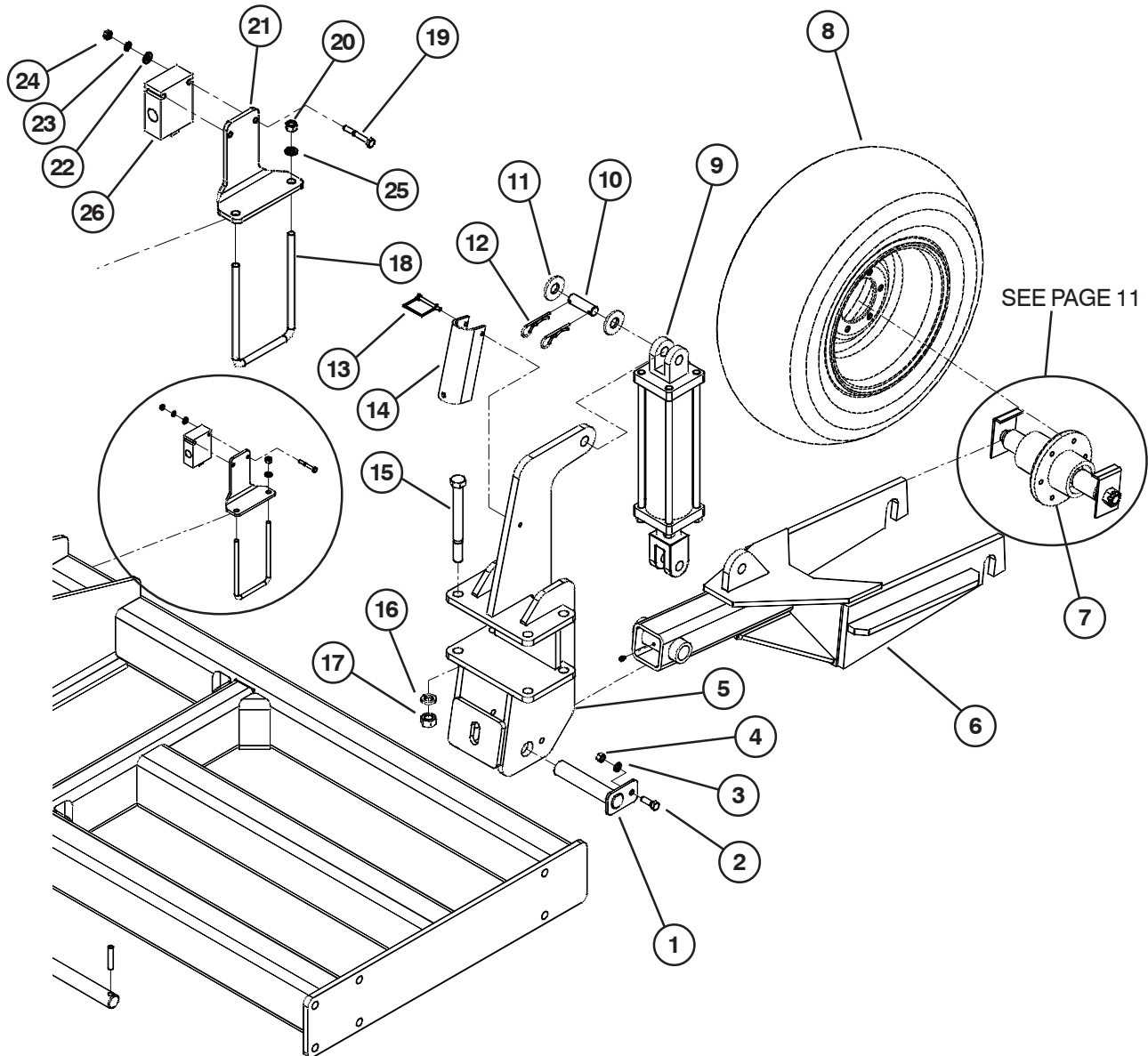
# PULL HITCH



Item	Part No.	Description
1	69917	TONGUE
2	89018	1/8x1 ROLL PIN
3	234757	TONGUE REST PIN
4	23039	.14x2.69 HAIR PIN
5	234731	LOWER ROD END - RH THREADS
6	234727	ADJUSTMENT ARM
7	234390	UPPER 3PT PIN
8	32990	7/16x1-1/2 CLICK PIN
9	88550	1/4 GREASE FITTING
10	234734	UPPRE ROD END -LH THREADS
11	234234	357 MAIN FRAME 4 THRU 7 SHANK
	233583	357 MAIN FRAME 8 SHANK 30"
12	234102	LOWER 3PT PIN
13	88544	5/16NCx2 BOLT
14	88358	5/16 LOCK WASHER
15	238402	COVER PLATE
16	238400	1/2 CLAMP HALF (2)
17	238401	TWIN PLATE
18	234722	357 PULL HITCH
19	24415	JACK
20	88940	1/2NCx3 BOLT
21	88363	1/2NC LOCK NUT
22	69948	1-3/4x9 HEADLESS PIN
23	24459	20K SAFETY CHAIN
24	89406	3/8NCx6x4-3/4 U-BOLT
25	236142	HYDRAULIC HOSE BRACKET
26	88203	1/4NCx1 BOLT
27	223329	LIGHT PLUG HOLDER
28	236092	RUBBER EDGING
29	88262	1/4 LOCK WASHER
30	88172	1/4NC NUT
31	234313	OPERATORS MANUAL TUBE&BRKT
32	88261	1/4 FLAT WASHER
33	88993	1/4NCx3/4 BOLT
34	88103	3/8NC NUT
35	88362	3/8 LOCK WASHER
36	88282	3/8 FLAT WASHER

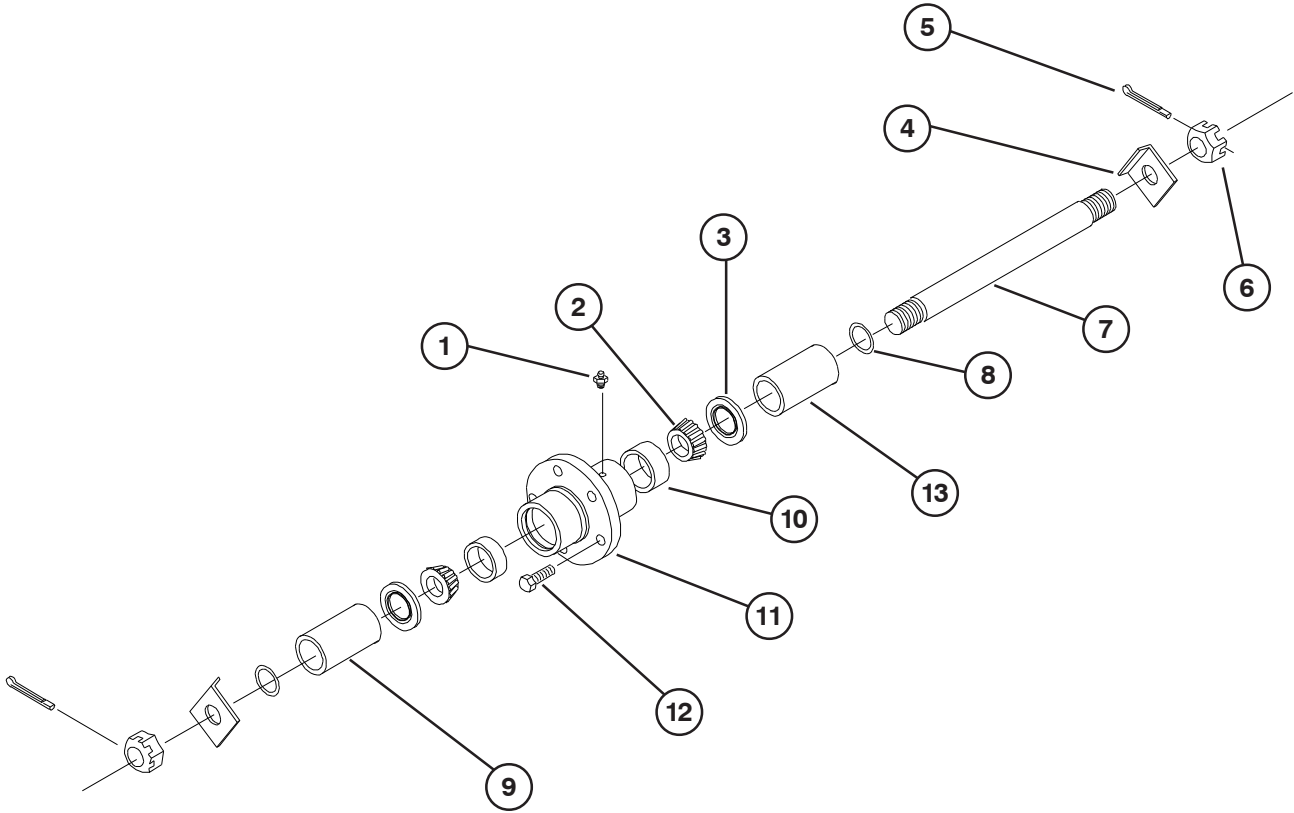
357 INLINE RIPPER PARTS 74192 11/15

# LIFT STATION



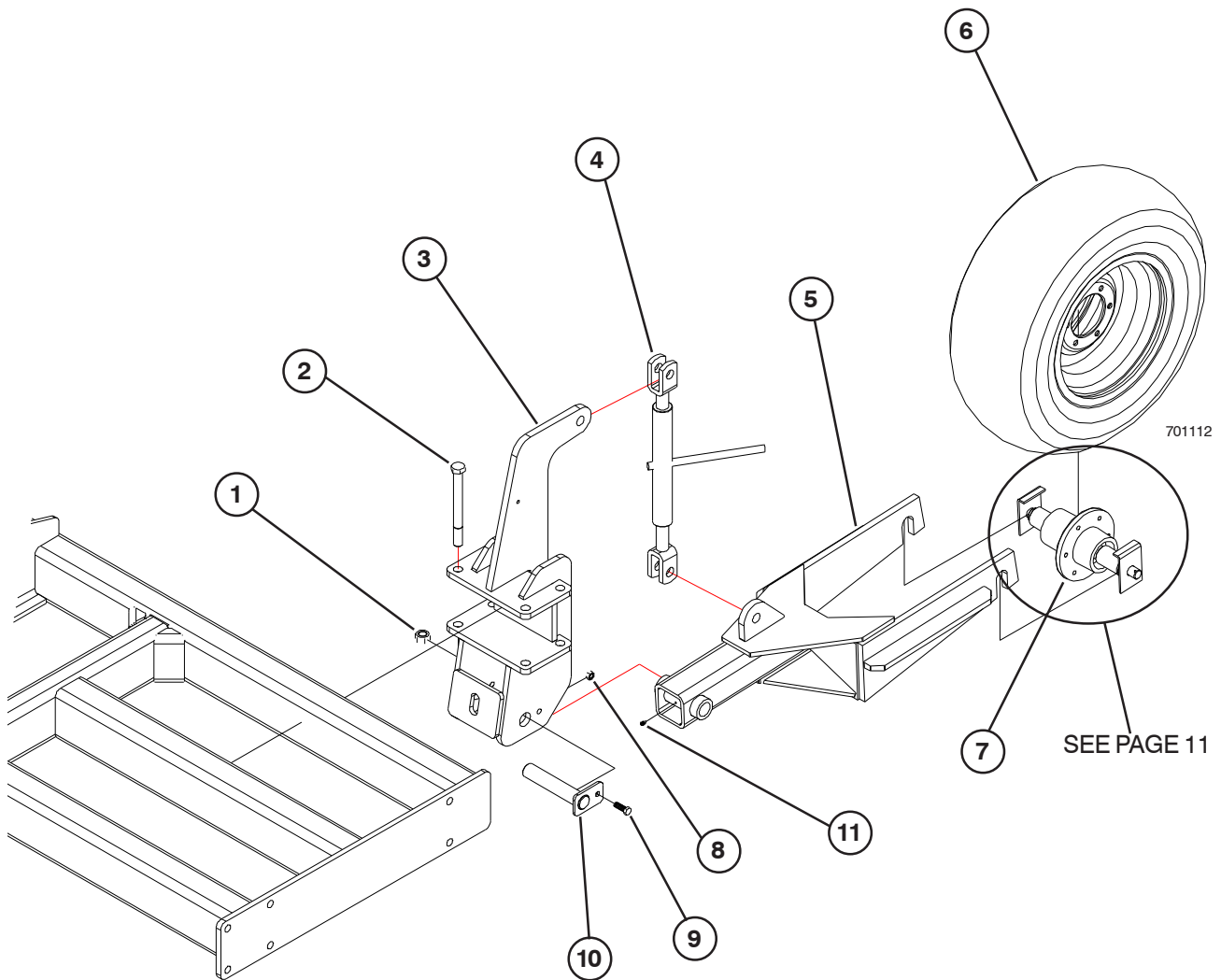
Item	Part No.	Description	Item	Part No.	Description
1	234756	PIN 1-1/2x8	14	42253	2" CYLINDER CHANNEL LOCK
2	88475	1/2NCx1-1/2 BOLT	15	88847	7/8NCx9 BOLT
3	88303	1/2 LOCK WASHER	16	88341	7/8 LOCK WASHER
4	88104	1/2NC NUT	17	88371	7/8NC NUT
5	234750	REAR STRUT LIFT STATION	18	89040	3/8NCx4x7 U-BOLT
6	234742	REAR STRUT - LH (SHOWN)	19	88492	1/4NCx2 GR8 BOLT
	234743	REAR STRUT - RH	20	88103	3/8NC NUT
7	234758	YOKE HUB ASSY (16" SPINDLE)	21	234762	FLOW DIVIDER MNTING PLT
8	65696	WHL ASSY 11LX15 6B 10 HWY	22	88261	1/4 FLAT WASHER
	41279	TIRE 11L-15F1 12PLY HWY SERVICE	23	88262	1/4 LOCK WASHER
	46714	RIM 15X10 6BOLT	24	88172	1/4NC NUT
9	234764	4x12 HYD CYLINDER	25	88362	3/8 LOCK WASHER
	222038	4" SEAL KIT	26	234761	FLOW DIVIDER
10	42473	HEADLESS PIN 1x2-3/8			
11	88196	1" FLAT WASHER			
12	88137	3/16x3-3/4 SPRING PIN			
13	915402	5/16x2-3/4 LYNCH PIN			

# YOKE HUB ASSEMBLY FOR LIFTSTATION (PAGE 10)



Item	Part No.	Description
1	88263	1/8NPT GREASE FITTING
2	54731	BEARING CONE
3	208981	2" INTERNAL TRIPLE LIP SEAL
4	55150	SPINDLE LOCK
5	88133	3/16x2 COTTER PIN
6	88299	1NF SLOTTED NUT
7	234751	1-1/2x16 SPINDLE
8	12456	SHAFT SEAL
9	234752	2ODx3.09 SEALED SPINDLE TUBE
10	16082	BEARING CUP
11	54729	HUB W/ CUPS (INCLUDES ITEM 10)
12	63831	9/16NFx1-1/8 WHEEL BOLT
13	234753	2ODx2.85 SEALED SPINDLE TUBE

# HEAVY DUTY GAUGE WHEEL

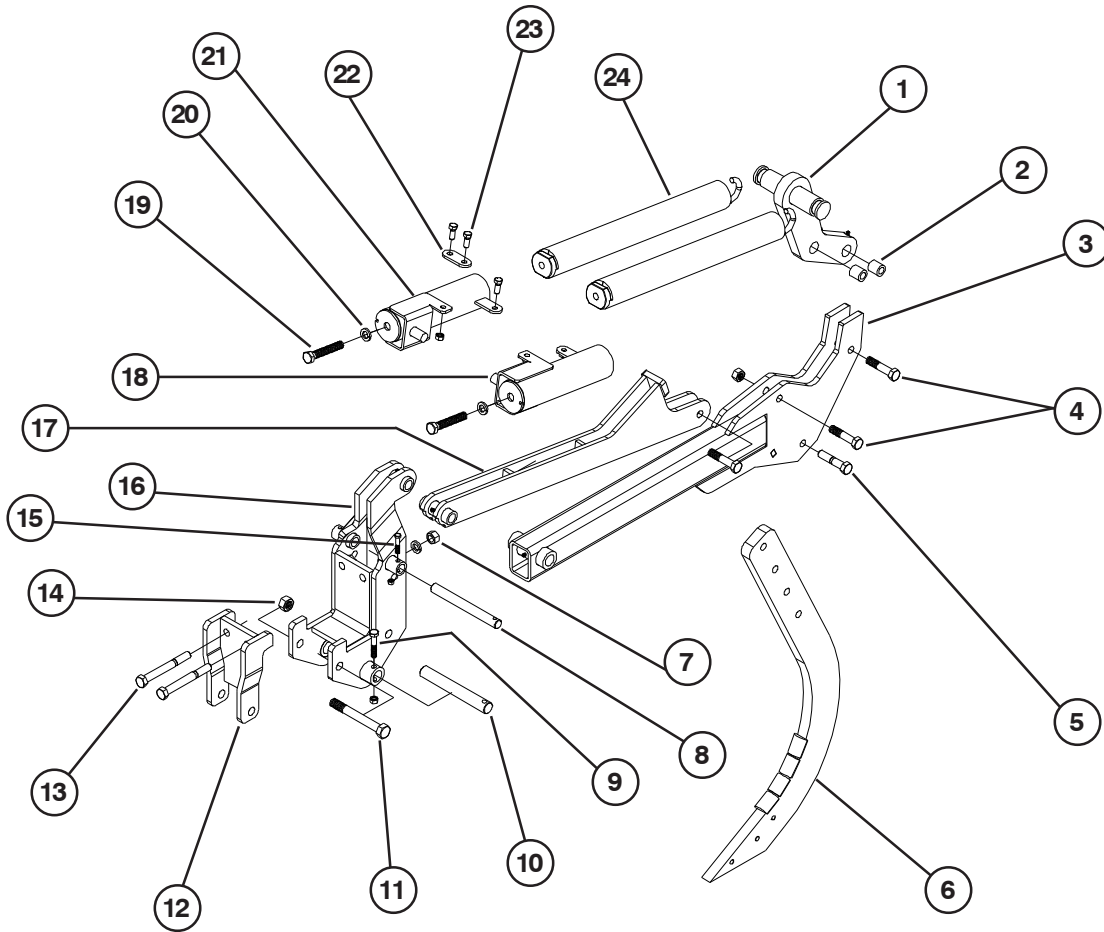


## ITEM PART NO. DESCRIPTION

1	88836	7/8 LOCK NUT
2	88847	7/8 X 9 HEX BOLT GR5
3	234750	LIFT STATION
4	33140	RATCHET JACK
5	234742	REAR STRUT-LH (SHOWN)
	234743	REAR STRUT-RH
6	24538	WHEEL ASSY 11L X 15 6B GRAY
	10498	RIM 15X8 6BOLT
	29066	TIRE 11L X 15 8PLY
7	234758	YOKE HUB ASSEMBLY (16 IN SPINDLE)
8	88363	1/2 LOCK NUT
9	88475	BLT HEX 1/2-13NC X 1-1/2 5Z
10	234756	PIN WELD 1-1/2 IN DIA
11	88550	FTG GRS 1/4-28

# SHANK ASSEMBLY-SPRING RESET

SERIAL NUMBER 463195 AND BELOW



700812

## ITEM PART NO. DESCRIPTION

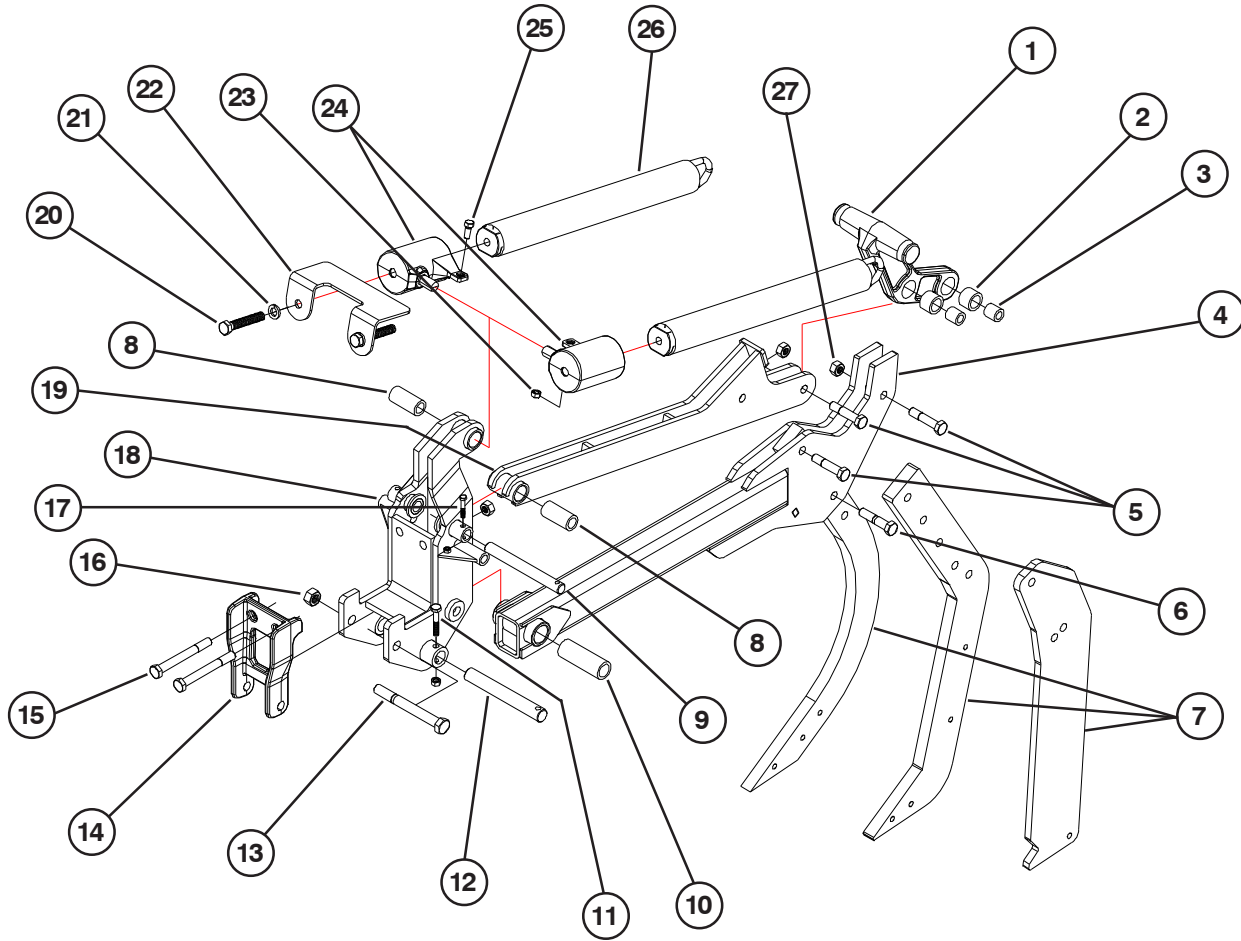
1	239801	LINK ARM WELD-REAR DOG LEG
2	69825	BUSHING
3	351104	SHANK ARM WELD
4	64409	3/4NC X 3-1/2GR8 PIVOT BLT(GOLD)
5	89401	TAP BLT HEX 3/4 X 3-1/2 5Z
6	233739	MINIMAL DISTURBANCE SHANK
	240024	PARABOLIC SHANK (SHOWN)
7	88110	NUT HEX 3/4-10NC 5Z
8	239416	UPPER PIN 1 X 9-5/16
9	88585	BLT HEX 1/2-13NC X 2-3/4 5Z
10	239417	LOWER PIN 1-1/4 X 9-5/16
11	89489	BLT HEX 7/8-9NC X 8 8YZ
12	234397	LOCKING BRACKET WELD
13	88600	BLT HEX 3/4-10NC X 6-1/2 8Z
14	88371	NUT HEX 7/8-9NC 5Z
15	89011	BLT HEX 3/8-16NC X 2 5Z
16	350623	MOUNTING BRACKET WELD-SHANK ARM
17	239699	TOP LINK ARM WELD
18	239813	SPRING CANISTER WELD-SINGLE LH

## ITEM PART NO. DESCRIPTION

19	10210	ADJUSTMENT BOLT
20	88130	WSHR HLK 3/4ID(13/16ACT) Z
21	237863	SPRING CANISTER WELD RH-SINGLE
22	239804	STRAP-FRONT SPRING CONNECTION
23	88554	BLT HEX 1/2-13NC X 1-1/4 5Z
24	221209	SPRING PLUG ASSY

# SHANK ASSEMBLY-SPRING RESET

SERIAL NUMBER 463196 AND ABOVE



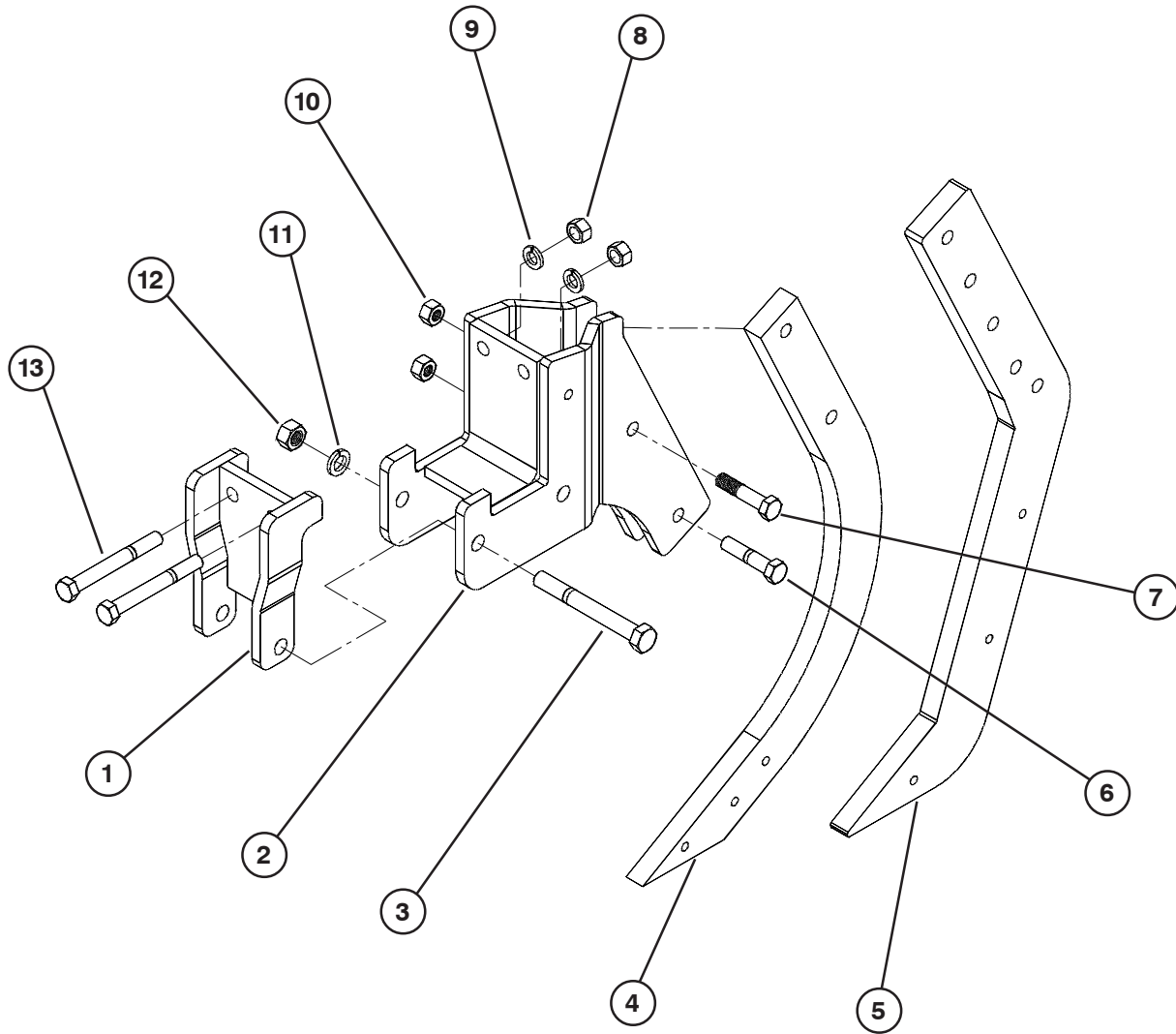
**ITEM PART NO. DESCRIPTION**

1	353339	REAR DOG LEG
2	353305	PLASTIC BUSHING 1.75 X 1.25 X 1.25
3	69825	BUSHING
4	353321	SHANK ARM WELD
5	64409	3/4NC X 3-1/2GR8 PIVOT BLT(GOLD)
6	89401	TAP BLT HEX 3/4 X 3-1/2 5Z
7	240024	PARABOLIC SHANK
	233739	MINIMAL DISTURBANCE SHANK
	355422	SHANK-3/4 WIDE
8	353306	PLASTIC BUSHING 1.50 X 1.02 X 3.19
9	239416	UPPER PIN 1 X 9-5/16
10	353307	PLASTIC BUSHING-MAIN PIVOT
11	88585	BLT HEX 1/2-13NC X 2-3/4 5Z
12	239417	LOWER PIN 1-1/4 X 9-5/16
13	89489	BLT HEX 7/8-9NC X 8 8YZ
14	234397C	LOCKING BRACKET
15	88600	BLT HEX 3/4-10NC X 6-1/2 8Z
16	88371	NUT HEX 7/8-9NC 5Z
17	89011	BLT HEX 3/8-16NC X 2 5Z
18	355439	MOUNTING BRACKET-SHANK ARM
19	355441	TOP LINK ARM WELD
20	10210	ADJUSTMENT BOLT

**ITEM PART NO. DESCRIPTION**

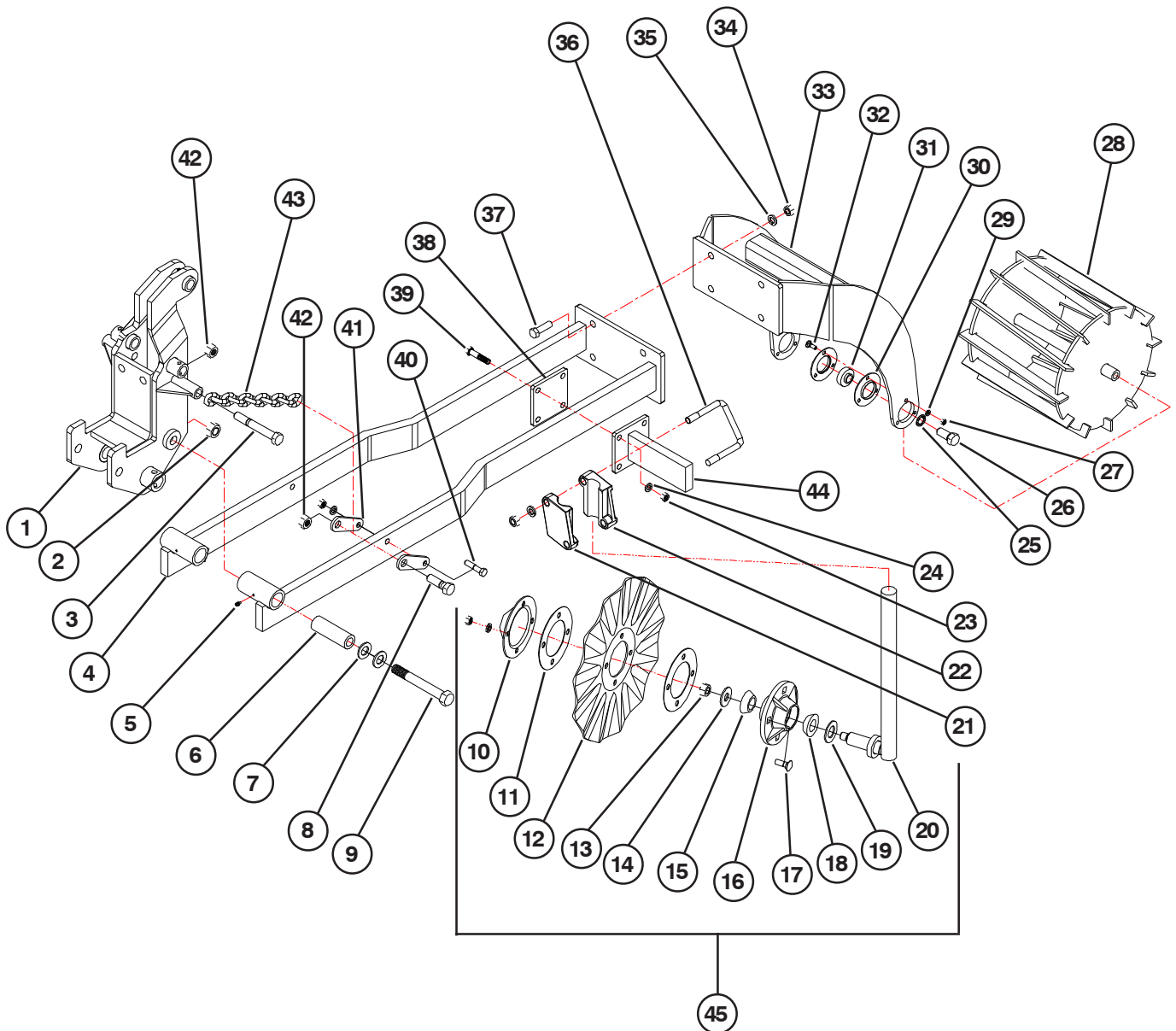
21	88130	WSHR HLK 3/4ID(13/16ACT) Z
22	353348	PLATE-SPRING RETAINER
23	88363	NUT 2POSLK 1/2-13NC 5Z
24	353308	SPRING CANISTER
25	88554	BLT HEX 1/2-13NC X 1-1/4 5Z
26	221209	SPRING PLUG ASSY
27	88356	NUT 2POSLK 3/4-10NC 5Z

# SOLID MOUNT SHANK ASSY

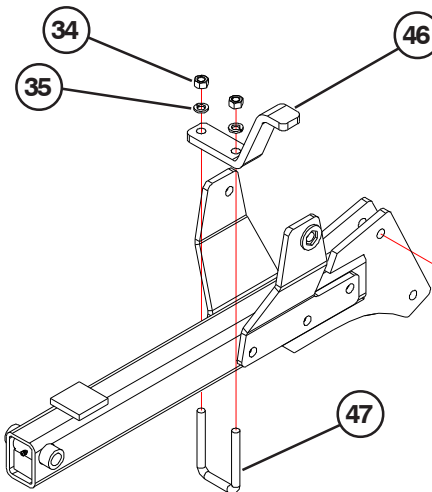


Item	Part No.	Description
1	234397	LOCKING BRACKET
2	235908	SOLID MOUNT BRACKET
3	89169	7/8NCx7-1/2 BOLT
4	240024	PARABOLIC SHANK
5	233739	MINIMAL DISTURBANCE SHANK
6	89401	3/4NCx3-1/2 TAP BOLT(SHEAR BOLT)
7	64409	3/4NCx3-1/2 GR8 BOLT (GOLD)
8	88110	3/4NC NUT
9	88130	3/4 LOCK WASHER
10	88356	3/4NC LOCK NUT
11	88341	7/8 LOCK WASHER
12	88371	7/8NC NUT
13	89130	3/4NCx6-1/2 BOLT

# SLOT TILL GANG ASSEMBLY



**NOTE: BASKET ARM STOP IS BOLTED ON SHANK ASSEMBLY'S THAT ARE BOLTED ON THE THE WINGS ONLY. THIS CONTROLS THE MOTION OF THE BASKET ARMS WHEN UNIT IS BEING FOLDED.**

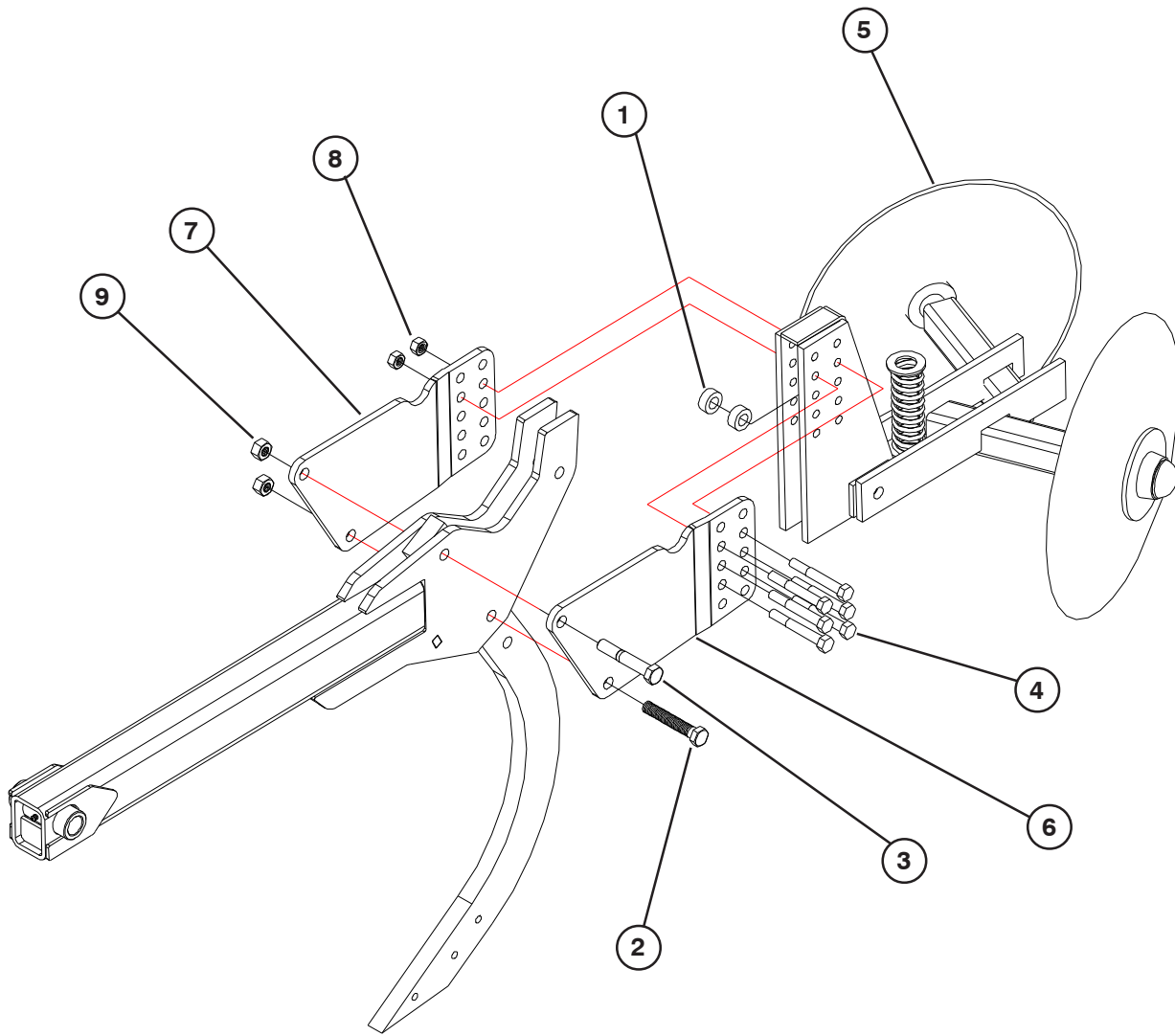




# SLOT TILL GANG ASSEMBLY

<b>Item</b>	<b>Part No.</b>	<b>Description</b>
1	350623	SHANK ARM MOUNTING BRKT
2	88836	NUT 2POSLK 7/8NC
3	88579	BLT HEX 3/4NC X 5-1/2
4	234047	FLOATING ARM
5	88550	1/4 GREASE FITTING
6	234042	DISC GANG BUSHING
7	88132	7/8 FLAT WASHER
8	88404	BLT HEX 3/4NC X 2-1/2
9	88436	BLT HEX 7/8NC X 7
10	14367	DUST CAP
11	15471	COULTER GASKET
12	234048	3/4" - 12 WAVE BLADE
13	88306	3/4NF LOCK NUT
14	19949	3/4 SPINDLE WASHER
15	10345	1-1/4ID BEARING CONE (LM67048)
16	19998	COULTER HUB ASSY
17	88873	1/2NCx1-1/2 CARRIAGE BOLT
18	19996	1-1/4 BEARING CONE (LM67000LA)
19	88397	1-1/4x2-1/4x10GA MACHINERY BUSHING
20	234030	DISK MOUNT
21	15522	OUTER MOUNT PLATE
22	15521	INNER MOUNT PLATE
23	88104	1/2 NC NUT
24	88303	1/2 LOCK WASHER
25	88754	3/4 INTERNAL LOCK WASHER
26	88405	3/4NCx1-3/4 BOLT
27	88127	5/16NC NUT
28	234039	CRUMBLER BASKET
29	88358	5/16 LOCK WASHER
30	21129	FLANGETTE
31	21130	BASKET BEARING
32	88519	5/16NCx1 CARRIAGE BOLT
33	234035	BASKET MOUNT
34	88126	5/8NC NUT
35	88129	5/8 LOCK WASHER
36	88453	5/8NCx4x4-1/2 U-BOLT
37	88294	5/8NCx2 BOLT
38	234053	PLATE - DISC MOUNT
39	88410	1/2NCx2-1/2 BOLT
40	88825	BLT HEX 1/2NC X 2-1/4
41	237869	BAR-CHAIN MOUNT
42	88356	NUT 2POSLK 3/4NC
43	235903	357 BASKET ARM CHAIN
44	234041	DISC CLAMP BRANCH
45	234050	WAVE COULTER ASSY (INCLUDES ITEMS 10 THRU 20, 23, & 24)
46	236527	BASKET ARM STOP
47	88503	5/8NCx3x5-1/4 U-BOLT

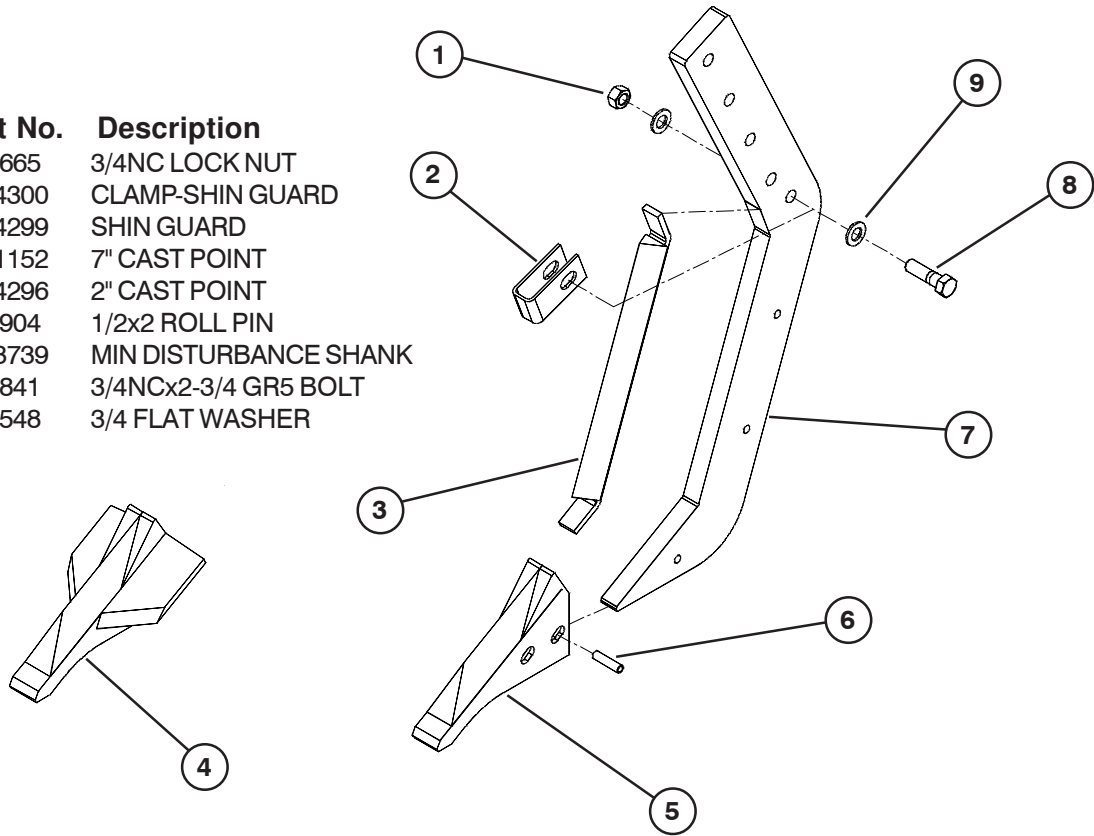
# DISC LEVELER



Item	Part No.	Description
1	223230	SPACER (13/16IDx1-1/2ODx5/8)
2	10210	3/4NCx4-1/2 FULL THREAD TAP BOLT GR5(SHEAR BOLT)
3	88953	3/4NCx4-1/2 GR8 BOLT
4	88381	5/8NCx4-1/2 BOLT
5	223231	DISK HILLER
6	352538	LEFT SIDE PLATE
7	352537	RIGHT SIDE PLATE
8	88369	5/8NC LOCK NUT
9	88356	3/4NC LOCK NUT

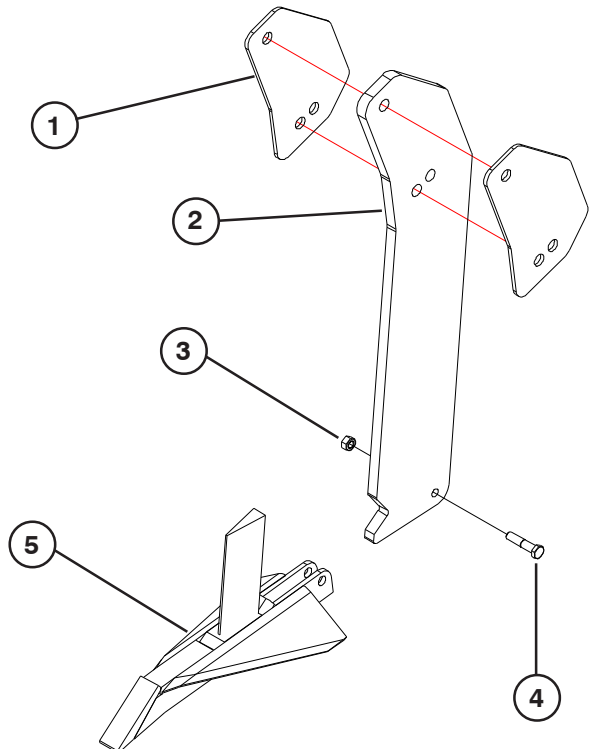
# MINIMAL DISTURBANCE SHANK & POINTS

Item	Part No.	Description
1	88665	3/4NC LOCK NUT
2	234300	CLAMP-SHIN GUARD
3	234299	SHIN GUARD
4	351152	7" CAST POINT
5	234296	2" CAST POINT
6	88904	1/2x2 ROLL PIN
7	233739	MIN DISTURBANCE SHANK
8	88841	3/4NCx2-3/4 GR5 BOLT
9	88548	3/4 FLAT WASHER



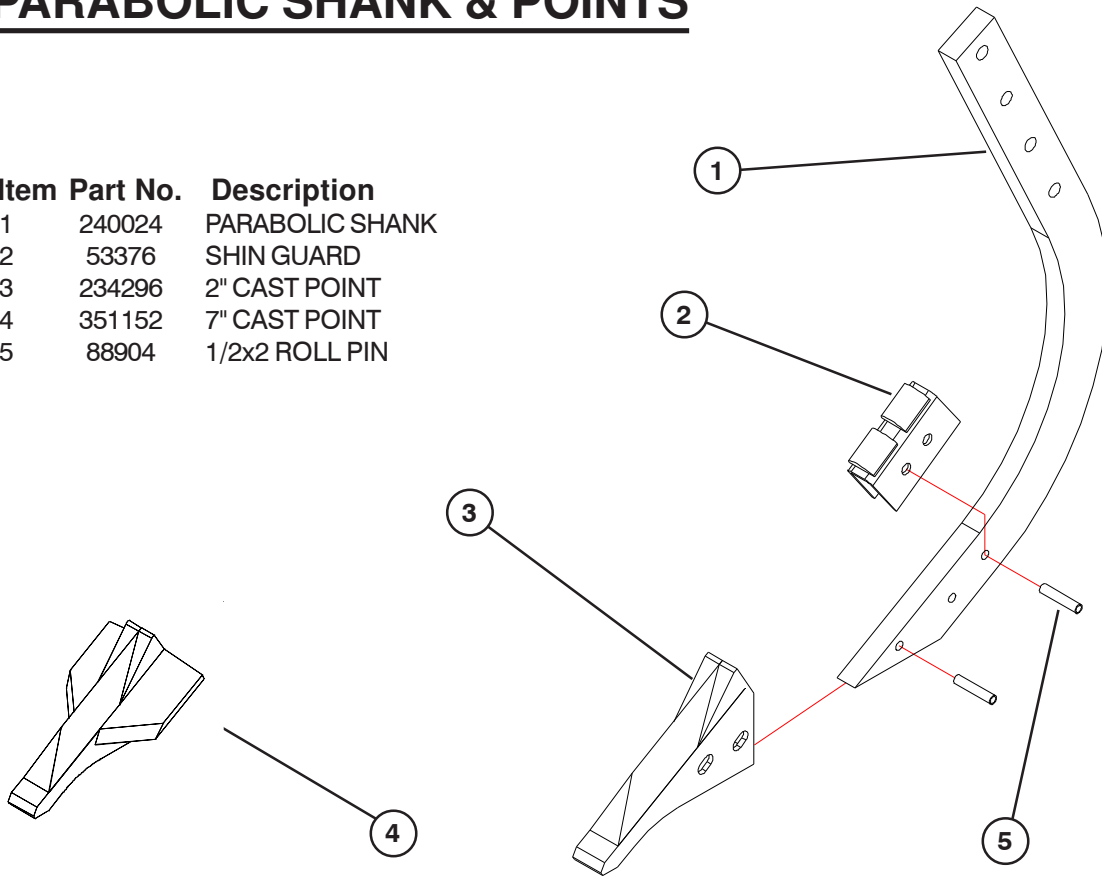
# 3/4" MINIMAL DISTURBANCE SHANK & POINT

Item	Part No.	Description
1	355423	SPACER PLATE
2	355422	3/4 WIDE SHANK
3	88363	1/2NC LOCK NUT
4	88825	1/2NCx2-1/4 BOLT
5	355421	MIN DISTURBANCE POINT



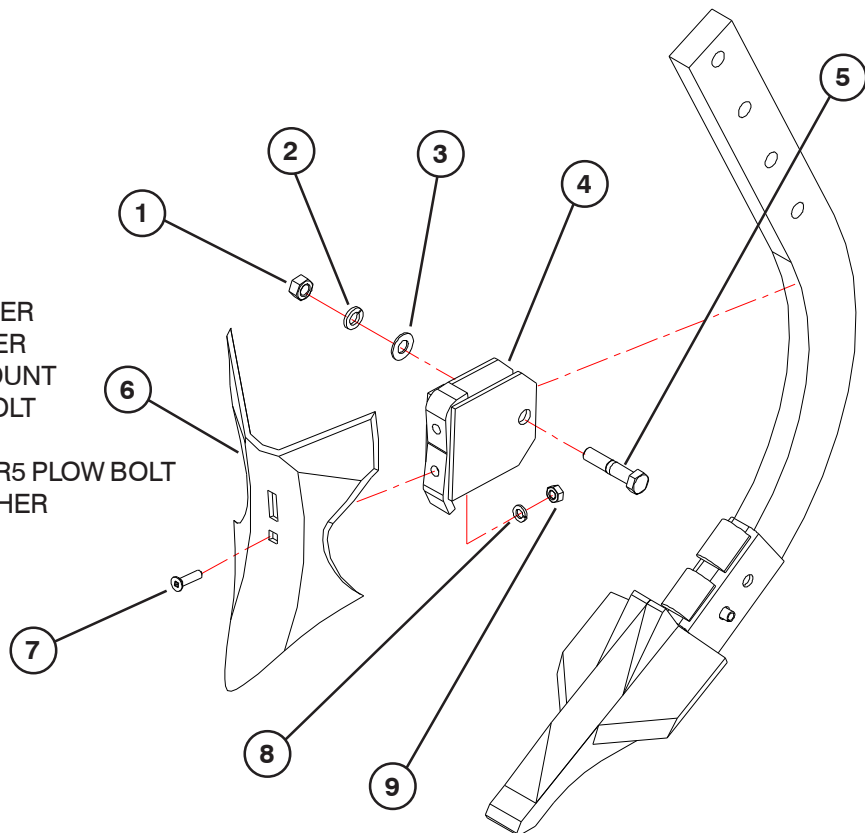
# PARABOLIC SHANK & POINTS

Item	Part No.	Description
1	240024	PARABOLIC SHANK
2	53376	SHIN GUARD
3	234296	2" CAST POINT
4	351152	7" CAST POINT
5	88904	1/2x2 ROLL PIN

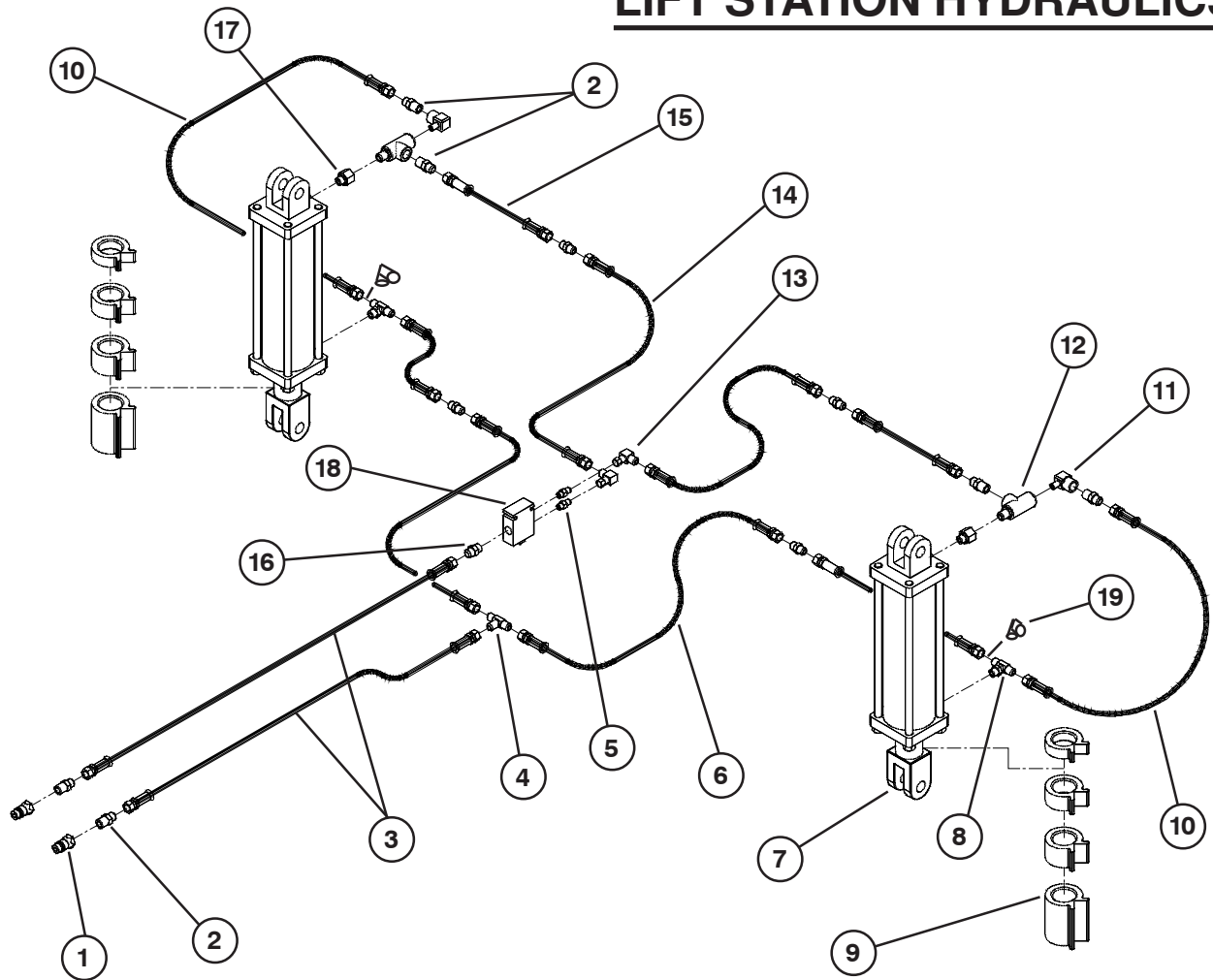


# 7" FURROWER

Item	Part No.	Description
1	88126	5/8NC NUT
2	88129	5/8 LOCK WASHER
3	88277	5/8 FLAT WASHER
4	61426	FORROWER MOUNT
5	88408	5/8NCx3 GR5 BOLT
6	61427	7" FURROWER
7	88599	7/16NCx1-1/2 GR5 PLOW BOLT
8	88269	7/16 LOCK WASHER
9	88270	7/16NC NUT



# LIFT STATION HYDRAULICS



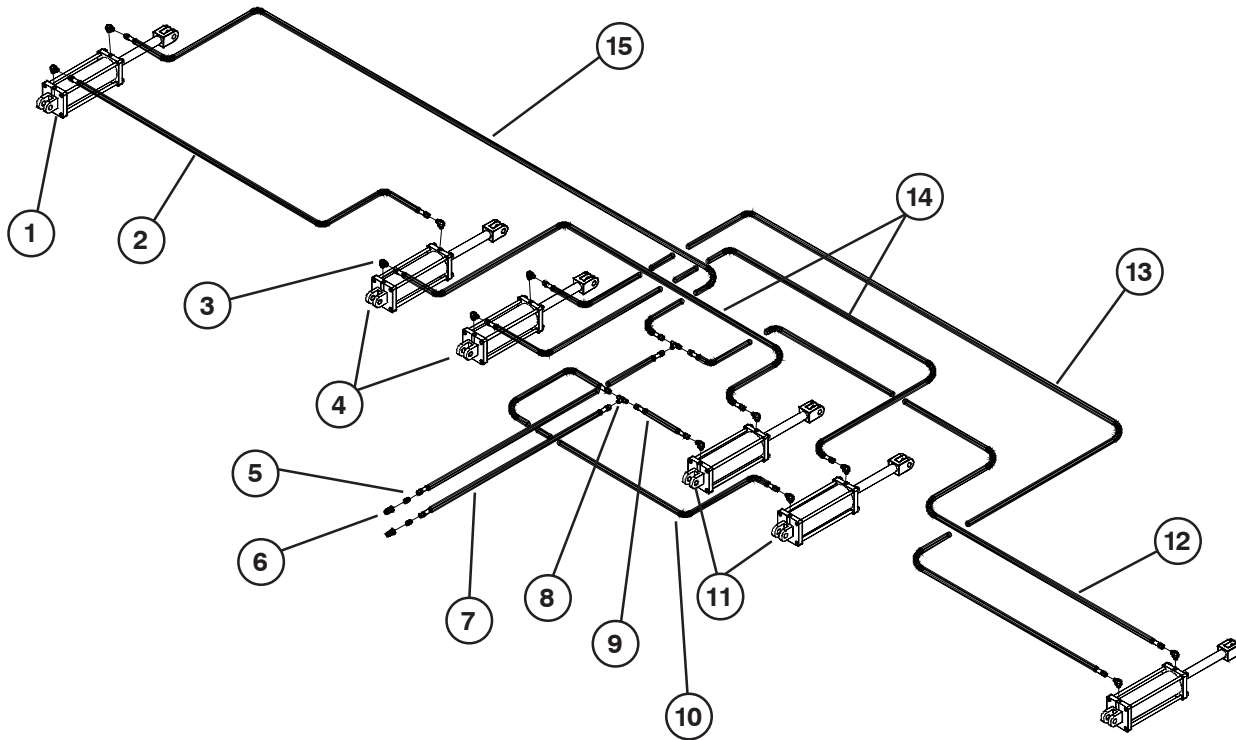
Item	Part No.	Description
1	60640	QUICK DICONNECT COUPLER
2	13234	ADAPTOR 8MJ-8MPT
3	208612	HOSE 1/2x204 8FJX-8FJX
4	13238	TEE 8MJ-8MJ-8MJ
5	67140	ADAPTOR 6MJ-6MORB
6	25602	HOSE 3/8x65 8FJX-8FJX
7	234767	4x12 HYD CYLINDER
	222038	SEAL KIT
8	56534	TEE 8MJ-8MJ-8MORB
9	63834	1-3/4 STOP PACKAGE
10	25594	HOSE 3/8x21 8FJX-8FJX
11	69082	ELBOW 4MPT-8FPT
12	69686	PILOT CHECK VALVE 1/2NPT
13	222919	ELBOW 8MJ-6FJX
14	13268	HOSE 3/8x78 8FJX-8FJX
15	13261	HOSE 3/8x30 8FJX-8FJX
16	24024	ADAPTOR 8MJ-8MORB
17	222855	ADAPTOR 8MORB-8FPT
18	234761	FLOW DIVIDER/COMBINER
19	25591	ELBOW 8MJx8FJX



**CAUTION: CYLCLE CYLINDERS SEVERAL TIME BEFORE LOWERING UNIT ON WHEELS. THIS MUST BE DONE TO PURGE ALL AIR OUT OF THE SYSTEM.**

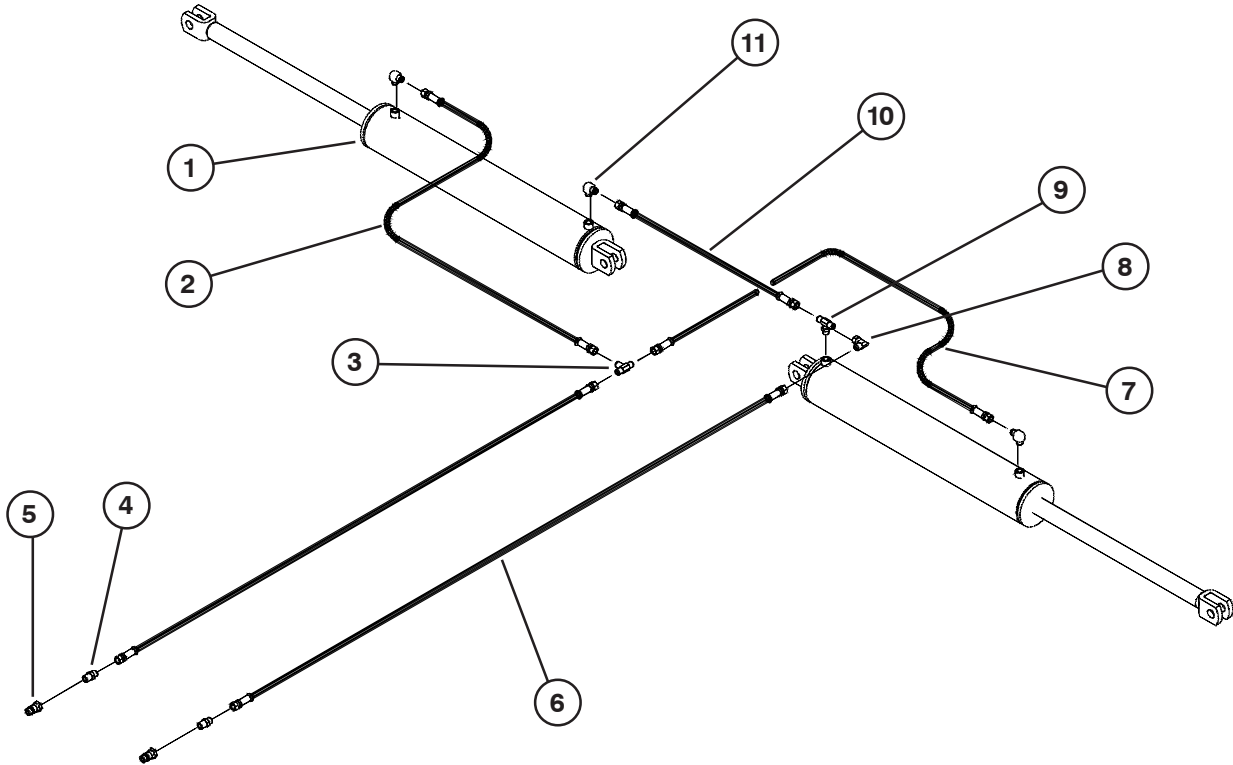
**NOTE: ITEM 19 IS USED ON 8 SHANK FOLDING UNITS ONLY.**

# 12 SHANK MAIN LIFT HYDRAULICS



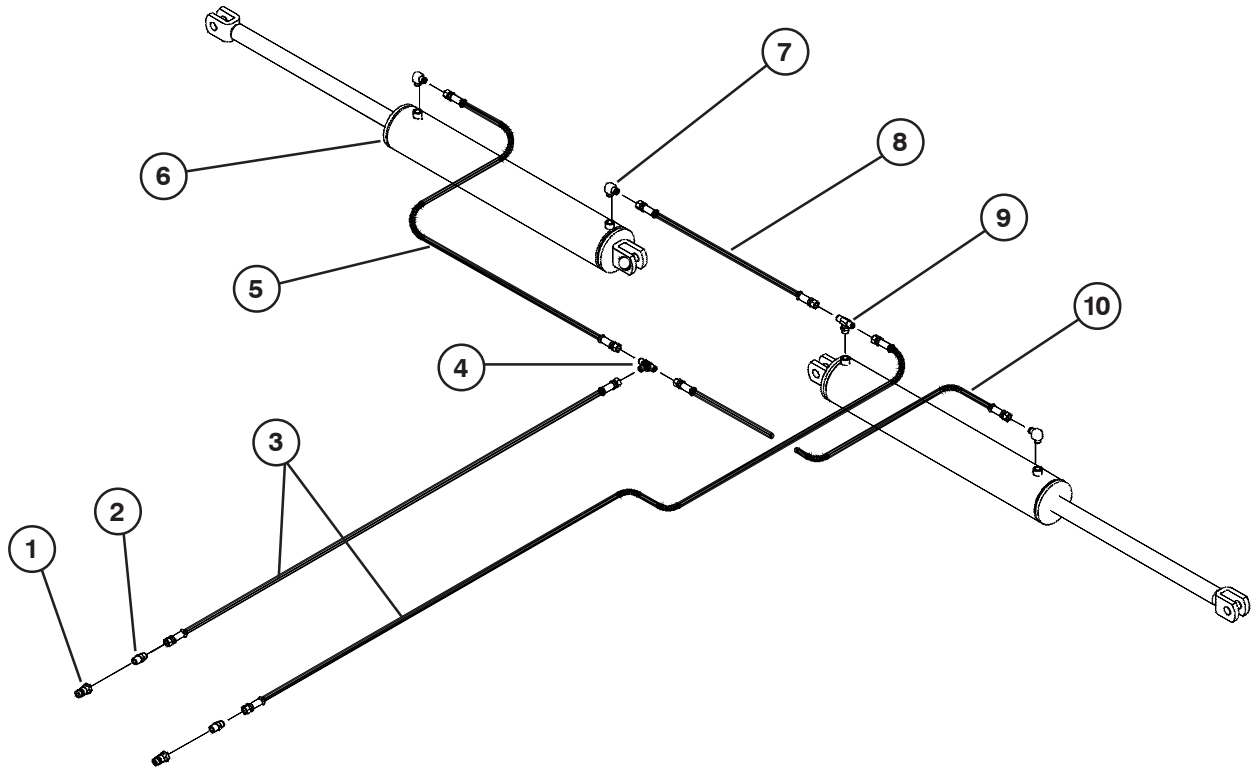
Item	Part No.	Description
1	235969	4-1/2x12 HYDRAULIC CYLINDER
	238474	4-1/2" SEAL KIT
2	13483	HOSE 3/8x120 8FJX - 8FJX
3	25580	ELBOW 8MORBx8MJ
4	235968	4-3/4x12 HYDRAULIC CYLINDER
	238475	4-3/4 SEAL KIT
5	13234	ADAPTER 8MJx8MPT
6	60640	QUICK DISCONNECT COUPLER
7	234947	HOSE 3/8x194 8FJX - 8FJX
8	13238	TEE 8MJx8MJx8MJ
9	25594	HOSE 3/8x21 8FJX - 8FJX
10	14644	HOSE 3/8x36 8FJX - 8FJX
11	235967	5x12 HYDRAULIC CYLINDER
	238476	5" SEAL KIT
12	235386	HOSE 3/8x137 8FJX - 8FJX
13	234939	HOSE 3/8x220 8FJX - 8FJX
14	13482	HOSE 3/8x108 8FJX - 8FJX
15	233689	HOSE 3/8x180 8FJX - 8FJX
	221714	HEADLESS PIN 1DIA X 4 (CYLINDER PIN)
	42484	ROLL PIN 1/4 X 2-1/4

# 12 SHANK HYD FOLD



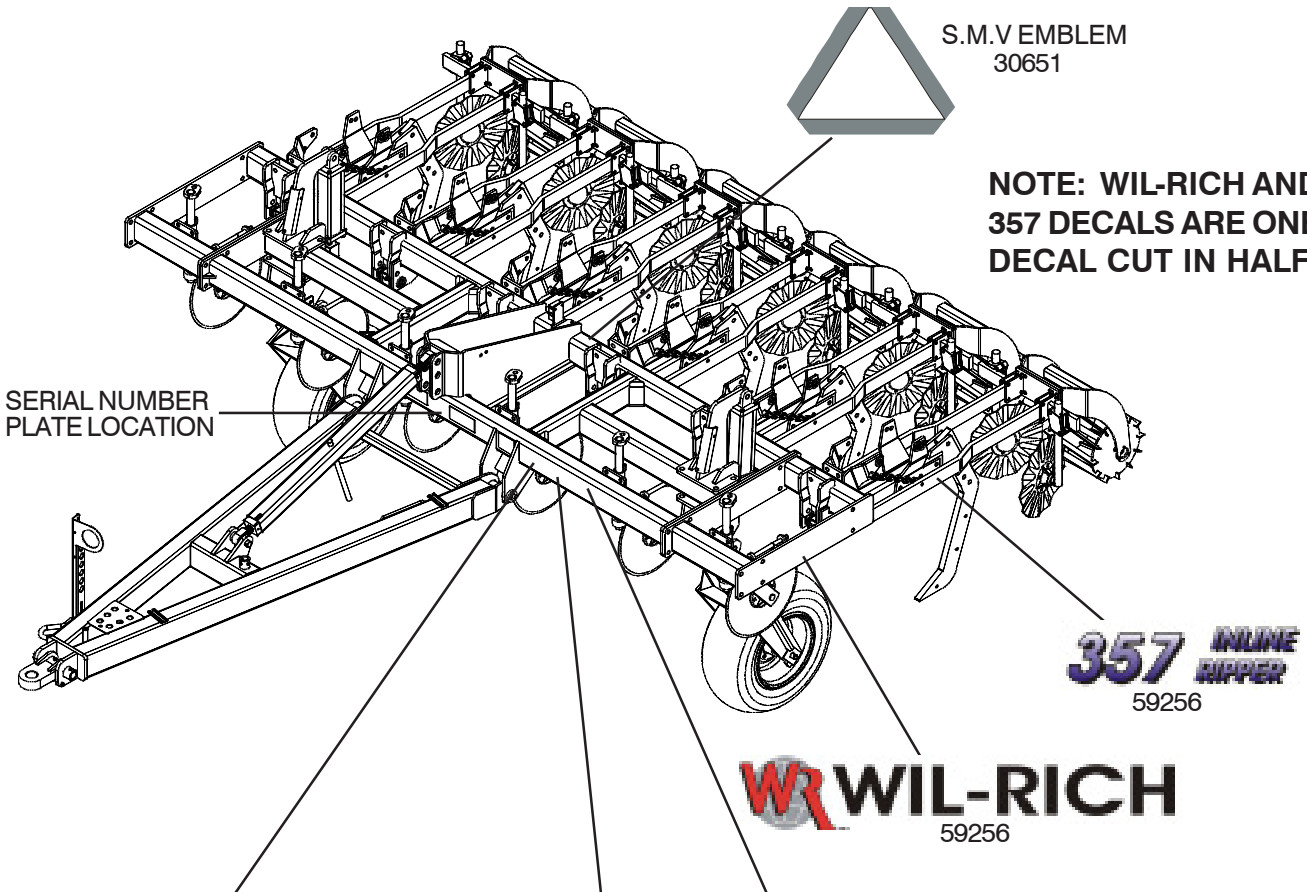
Item	Part No.	Description
1	12062F	5x24 HYDRAULIC CYLINDER
	233731	5" SEAL KIT
2	25603	3/8x75 8FJX - 8FJX HOSE
3	13238	TEE 8MJx8MJx8MJ
4	13234	ADAPTER 8MJx8MPT
5	60640	QUICK DISCONNECT COUPLER
6	13484	HOSE 3/8x156 8FJX - 8FJX
7	13261	HOSE 3/8x30 8FJX - 8 FJX
8	25591	ELBOW 8MJx8FJX
9	56534	TEE 8MJx8MJx8MORB
10	15515	HOSE 3/8x62 8FJX - 8FJX
11	25580	ELBOW 8MORBx8MJ

# 8 SHANK HYD FOLD



Item	Part No.	Description
1	60640	QUICK DISCONNECT COUPLER
2	13234	ADAPTER 8MJx8MPT
3	13484	HYD HOSE 3/8x156 8FJX - 8FJX
4	13238	TEE 8MJx8MJx8MJ
5	13265	HYD HOSE 3/8x56 8FJX - 8FJX
6	51226F	4x24 HYD CYLINDER
	233730	4" SEAL KIT
7	25580	ELBOW 8MORBx8MJ
8	14644	HYD HOSE 3/8x36 8FJX - 8FJX
9	56534	TEE 8MJx8MJx8MORB
10	13261	HYD HOSE 3/8x30 8FJX - 8FJX





**WARNING**

TO AVOID INJURY OR MACHINE DAMAGE:

- BEFORE OPERATING: Study Operators Manual, safety messages and safe operating procedures, read safety signs on this machine.
- Transport on public roads - Observe Federal, State and Local regulations; display SMV emblem; Attach proper strength implement safety chain; and limit maximum speed to 20mph (32km/h).
- Lower or block all elevated components before servicing or leveling this machine.

24227

**CAUTION**

TO AVOID POSSIBLE INJURY:

- Always lower implement to the ground for servicing or when not in use.
- Never allow anyone to ride on implement.
- Keep everyone clear of tractor and implement while in use or while tractor is running.

31926

**DANGER**

**CRUSHING HAZARD**

To prevent serious injury or death:

- Do not stand between implement and moving tractor.
- Stop tractor engine and set park brake before installing pins.

222802

**CAUTION: Keep all safety decals and reflectors clean, readable and in good condition. If a decal or reflector cannot be easily read, seen, or has been painted over, replace it immediately. Decals and reflectors may be ordered through your WIL-RICH dealer.**

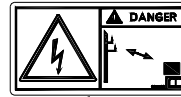
# DECALS



1



2



3



4



5



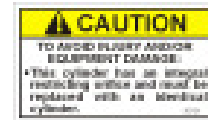
6



7



8



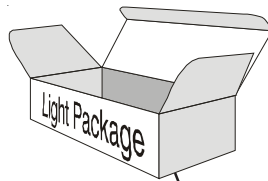
9



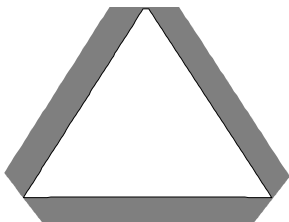
10



11



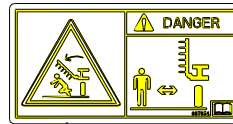
13



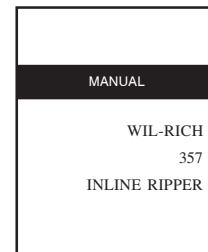
12



15



14

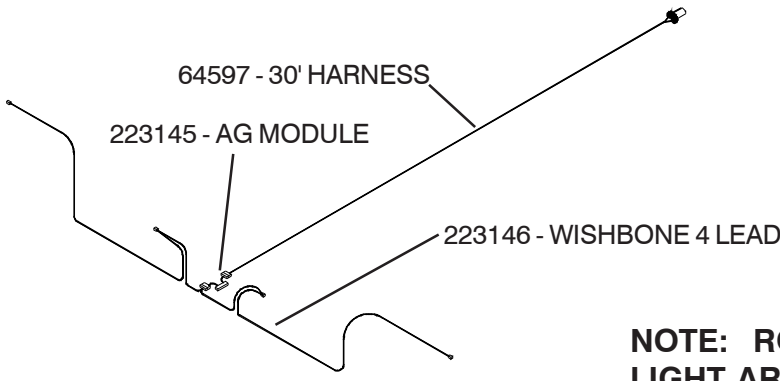


16

ITEM	PART NO	DESCRIPTION
1	997868	DECAL SPEED SIGN 25 MILE/HR
2	59256	357 INLINE RIPPER DECAL
3	997862	DECAL HIGH VOLTAGE DANGER
4	997263	DECAL TILLAGE PROMOTES A SAFER ENVIRONMENT FOR TOMORROW
5	997864	DECAL LOCKOUT WARNING
6	997860	DECAL READ MANUAL WARNING
7	22372	AMBER REFLECTOR
8	236746	HITCH RISE
9	20121	INTEGRAL RESTRICTOR DECAL
10	9971163	DECAL SAFETY SET
11	65342	WIL-RICH DECAL 3-5/8X23-7/8

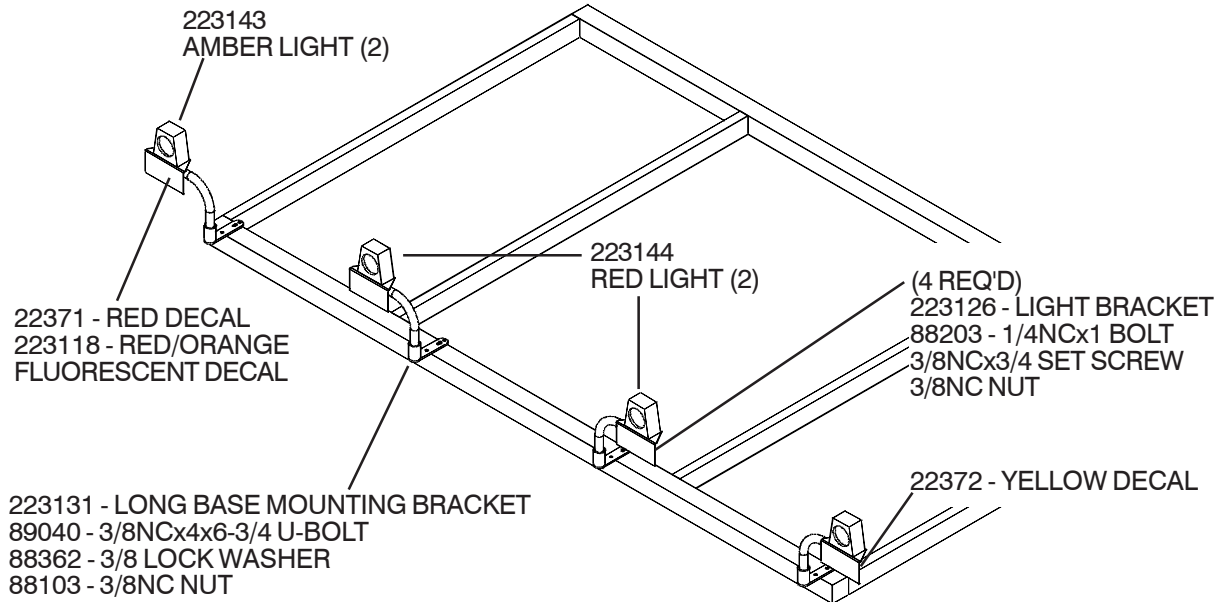
ITEM	PART NO	DESCRIPTION
12	350690	SMV KT (7SQ 4X6 5X7 TUBE)
13	223189	LIGHT KIT 3 THRU 8 SHANK
	237358	LIGHT KIT (FLAT FOLD)
	236569	LIGHT KIT 12 SHANK
14	997854	DECAL FOLDING WINGS DANGER
15	997865	DECAL LOCKOUT
16	9971378WRA	ASSEMBLY/OPERATORS MANUAL

# SAFETY LIGHTS

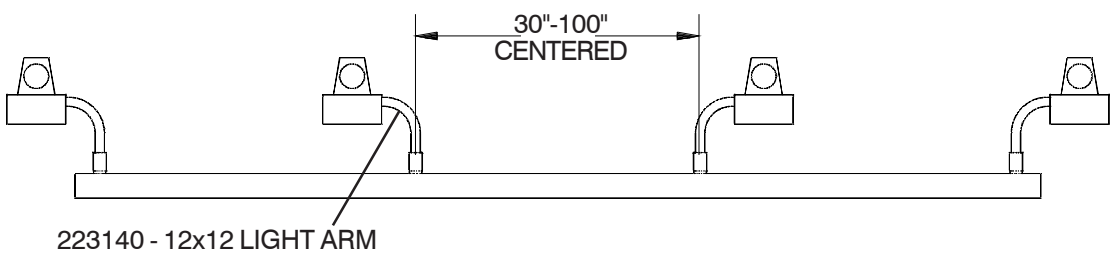


**NOTE: ROUTE LIGHT HARNESS THRU LIGHT ARMS.**

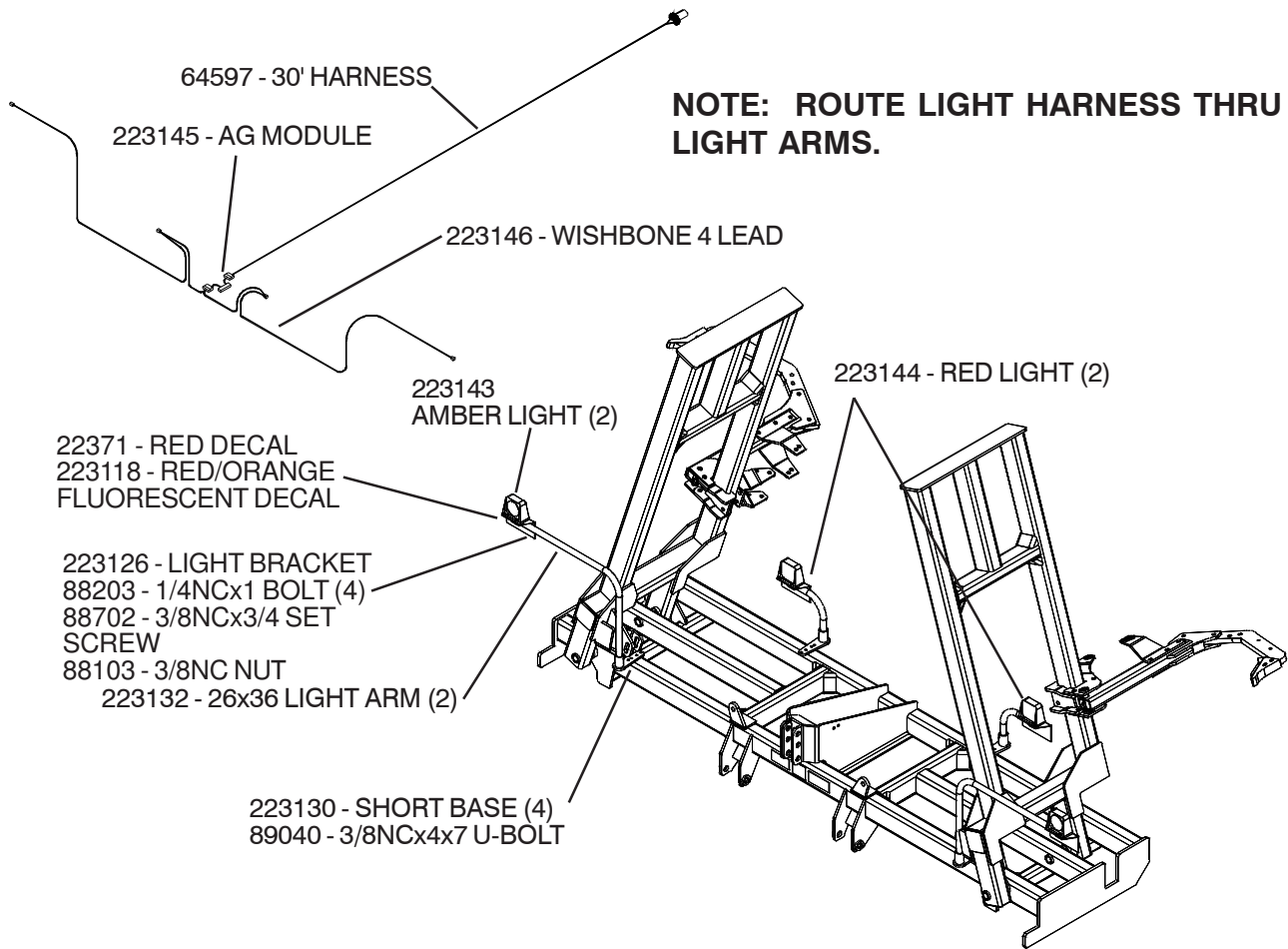
**NOTE: MOUNT AMBER LIGHTS AS WIDE AS POSSIBLE. THE AMBER LIGHTS MUST BE MOUNTED NO MORE THAN 16" FROM THE IMPLEMENT EX-TREMITIES.**



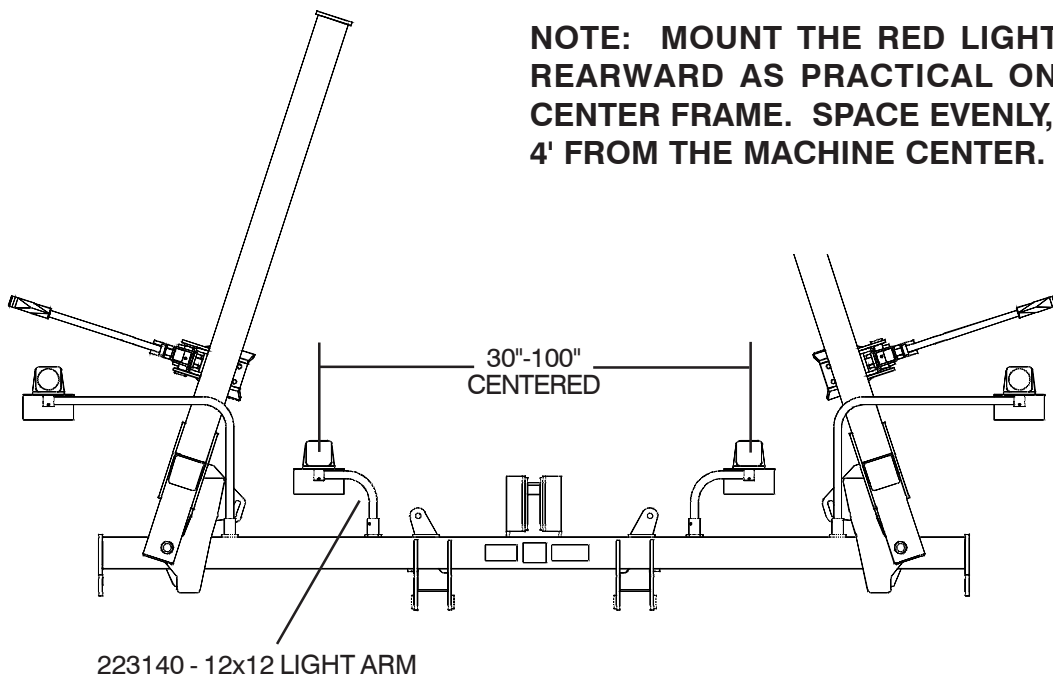
**NOTE: MOUNT THE RED LIGHTS AS REARWARD AS PRACTICAL ON THE CENTER FRAME. SPACE EVENLY, 2' TO 5' FROM THE MACHINE CENTER.**



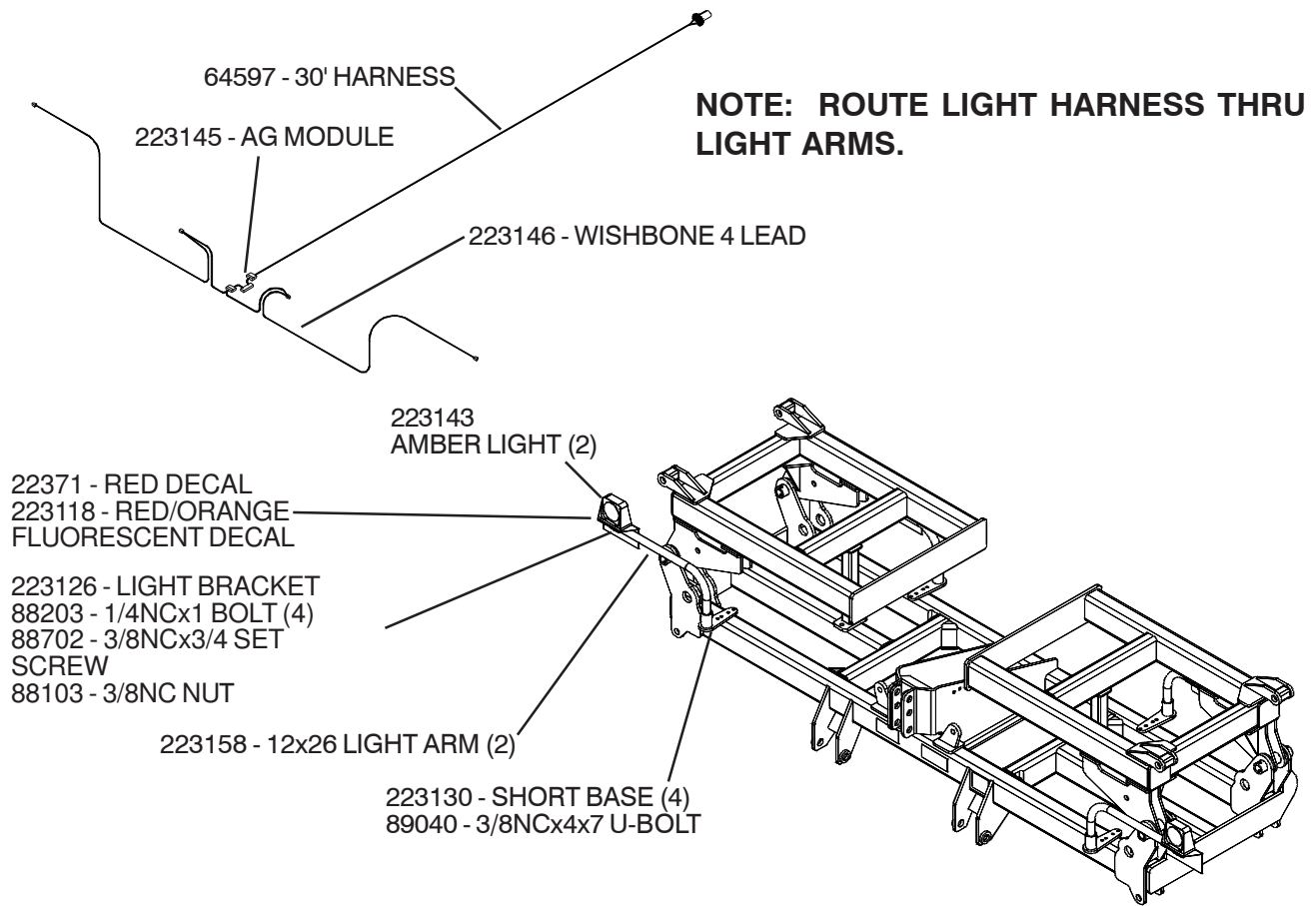
# 12 SHANK FOLDING SAFETY LIGHTS



**NOTE: MOUNT AMBER LIGHTS AS WIDE AS POSSIBLE. THE AMBER LIGHTS MUST BE MOUNTED NO MORE THAN 16" FROM THE IMPLEMENT EXTREMITIES.**

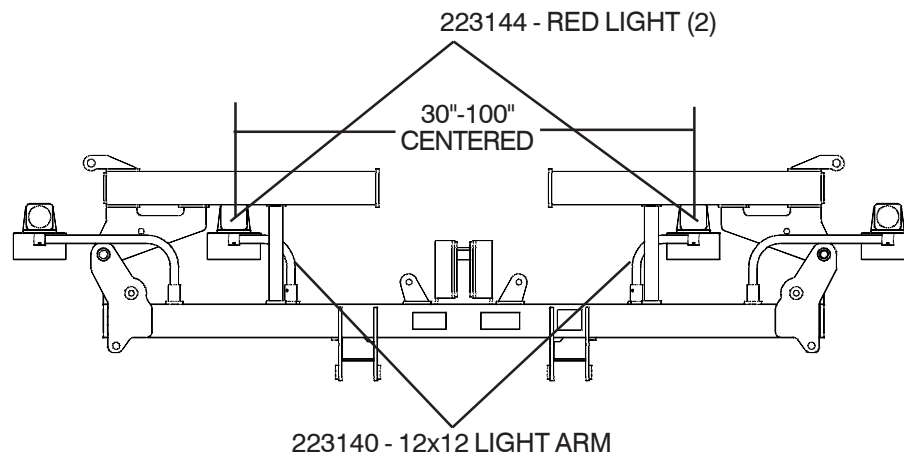


# 8 SHANK FOLDING SAFETY LIGHTS



**NOTE: MOUNT AMBER LIGHTS AS WIDE AS POSSIBLE. THE AMBER LIGHTS MUST BE MOUNTED NO MORE THAN 16" FROM THE IMPLEMENT EXTREMITIES.**

**NOTE: MOUNT THE RED LIGHTS AS REARWARD AS PRACTICAL ON THE CENTER FRAME. SPACE EVENLY, 2' TO 4' FROM THE MACHINE CENTER.**



**PAGE LEFT BLANK INTENTIONALLY**