



ASSEMBLY, ADJUSTMENT & PARTS

MOUNTED HEAVY DUTY COIL TINE HARROW

FOR 5800, QUAD 4 CHISEL PLOWS AND

800NT SERIES WISHEK DISKS

 **WIL-RICH**

PO Box 1030

Wahpeton, ND 58074

PH (701) 642-2621

Fax (701) 642-3372

PERSONAL SAFETY IS IMPORTANT!

ALL PERSONNEL INVOLVED WITH THE ASSEMBLY AND/OR OPERATION OF THIS EQUIPMENT MUST BE INFORMED OF PROPER SAFETY PROCEDURES. OPERATOR'S AND ASSEMBLY MANUALS PROVIDE THE NECESSARY INFORMATION. IF THE MANUAL IS LOST FOR A PARTICULAR IMPLEMENT, ORDER A REPLACEMENT AT ONCE. OPERATOR'S AND ASSEMBLY MANUALS ARE AVAILABLE AT NO CHARGE UPON REQUEST.

ADDRESS INQUIRIES TO:

WIL-RICH

PO BOX 1030

WAHPETON, ND 58074

PH (701)642-2621 FAX (701)642-3372

ASSEMBLY INFORMATION

Remove all wires and arrange the parts conveniently.

NOTE: Always wear safety glasses or goggles and be careful when cutting wires and steel bands as they are under tension and will spring back when cut.

Wherever the terms "left" and "right" are used, it must be understood to mean from a position behind and facing the machine.

Lubricate all bearings and moving parts as you proceed and make sure they work freely.

Loosely install all bolts connecting mating parts before final tightening.

When tightening bolts, they must be torqued to the proper number of foot-pounds as indicated in the table unless specified. It is important that all bolts be kept tight.

On new machines, all nuts and bolts must be re-checked after a few hours of operation.

When replacing a bolt, use only a bolt of the same grade or higher. Except in shear bolt applications, where you must use the same grade bolt.

Bolts with no markings are grade 2

Grade 5 bolts furnished with the machine are identified by three radial lines on the head.

Grade 8 bolts furnished with the machine are identified by six radial lines on the head.

All U-bolts are grade 5.



THIS SYMBOL USED TO CALL YOUR ATTENTION TO INSTRUCTIONS CONCERNING YOUR PERSONAL SAFETY.

BE SURE TO OBSERVE AND FOLLOW THESE INSTRUCTIONS

	GRADE 2			GRADE 5			GRADE 8		
TORQUE IN FOOT POUNDS									
BOLT DIA	3/8	1/2	5/8	3/4	7/8	1			
HEX HEAD	9/16	3/4	15/16	1-1/8	1-5/16	1-1/2			
UNC GR2	18	45	89	160	252	320			
UNC GR5	30	68	140	240	360	544			
UNC GR8	40	100	196	340	528	792			
UNF GR2	21	51	102	178	272	368			
UNF GR5	32	70	168	264	392	572			
UNF GR8	48	112	216	368	792	840			

CAUTION

TO AVOID INJURY AND/OR MACHINE DAMAGE:

- Refer to Operator's Manual for safety instructions.
- Do not stand or climb on machine when operating.
- Use clean hazard flashers and SMV sign when transporting.
- Observe highway traffic regulations.

23325

CAUTION

Failure to follow these instructions may result in personal injury and/or equipment damage.

- Just before and during operation be sure no one is on or around the implement.
- Before activating the hydraulic system, check hoses for proper connections.
- Before lowering the wings for the first time, make sure the entire system has been charged with oil.
- With wings down always install hydraulic cylinder channel lock(s) for transporting.

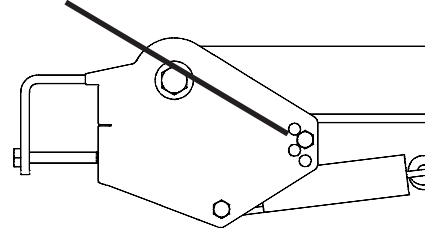
54374

HARROW OPERATION

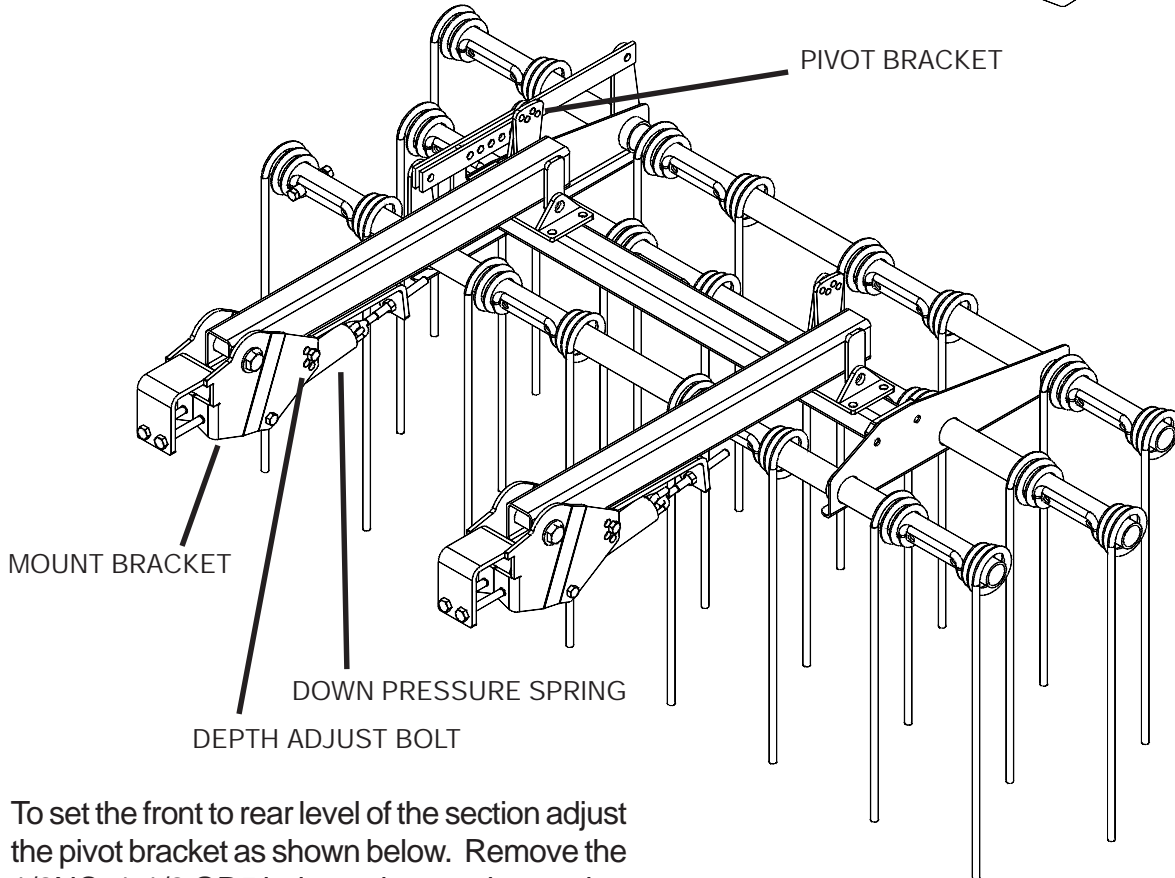
SECTION LEVEL ADJUSTMENT

To set the harrow working depth, first set the chisel plow to its working position. Remove the 5/8NCx5 GR5 bolt and relocate as required. The section should be set to run 3" to 5" deep in the working position.

DEPTH ADJUSTMENT BOLT

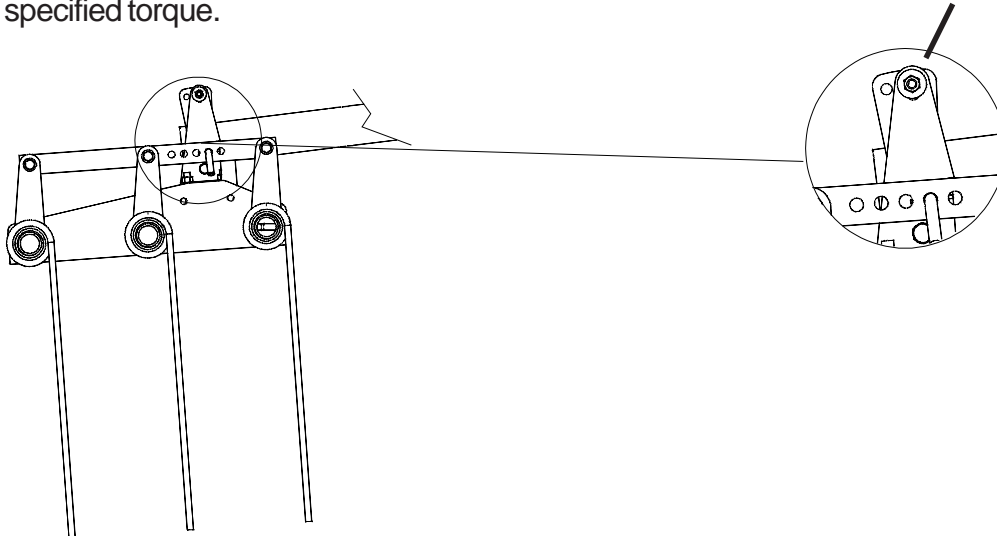


PIVOT BRACKET

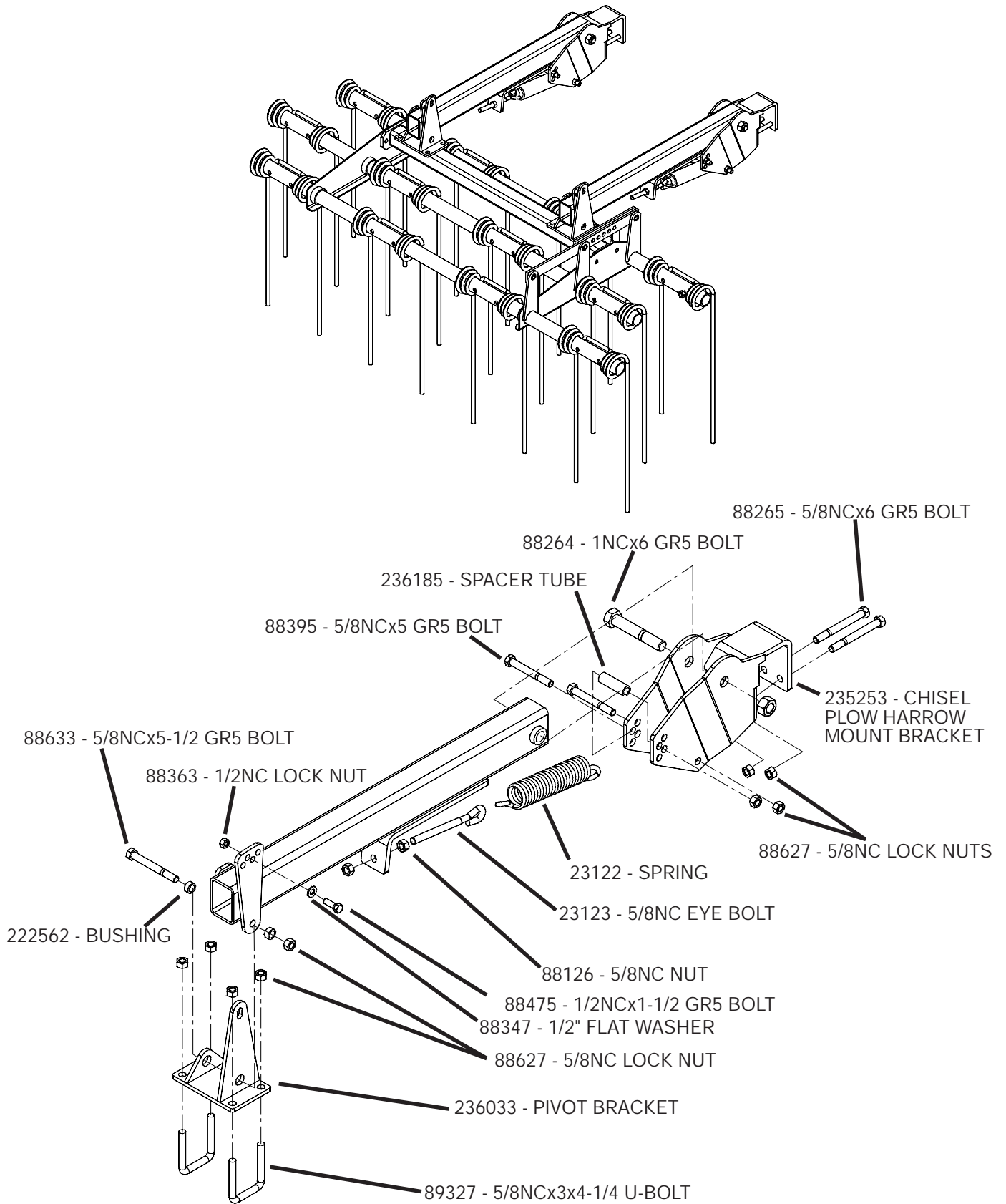


To set the front to rear level of the section adjust the pivot bracket as shown below. Remove the 1/2NCx1-1/2 GR5 bolts and rotate the section until the section is level. Reinstall bolts and tighten to specified torque.

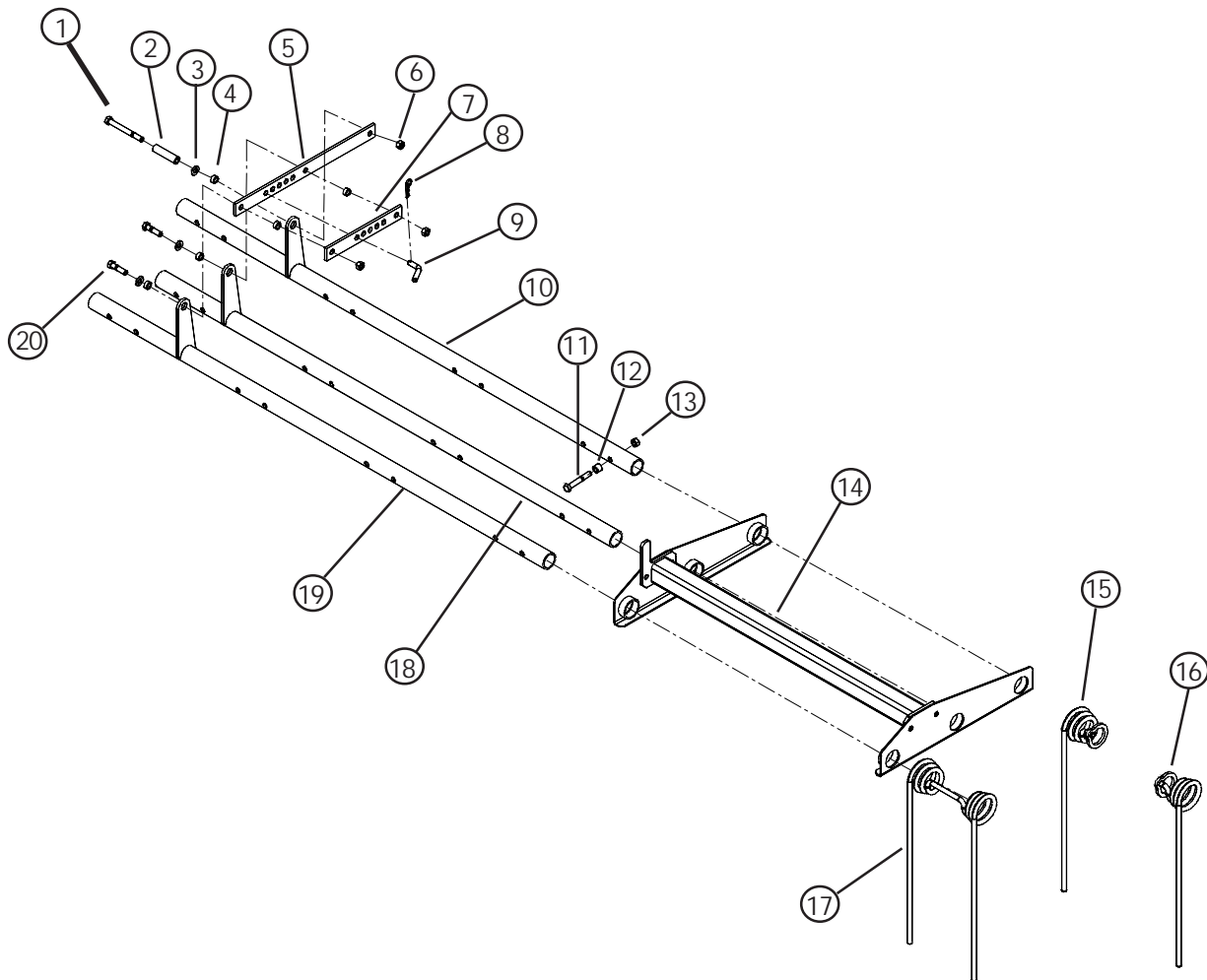
1/2NCx1-1/2 GR5 BOLT



HARROW ARM/PIVOT BRACKET ASSEMBLY



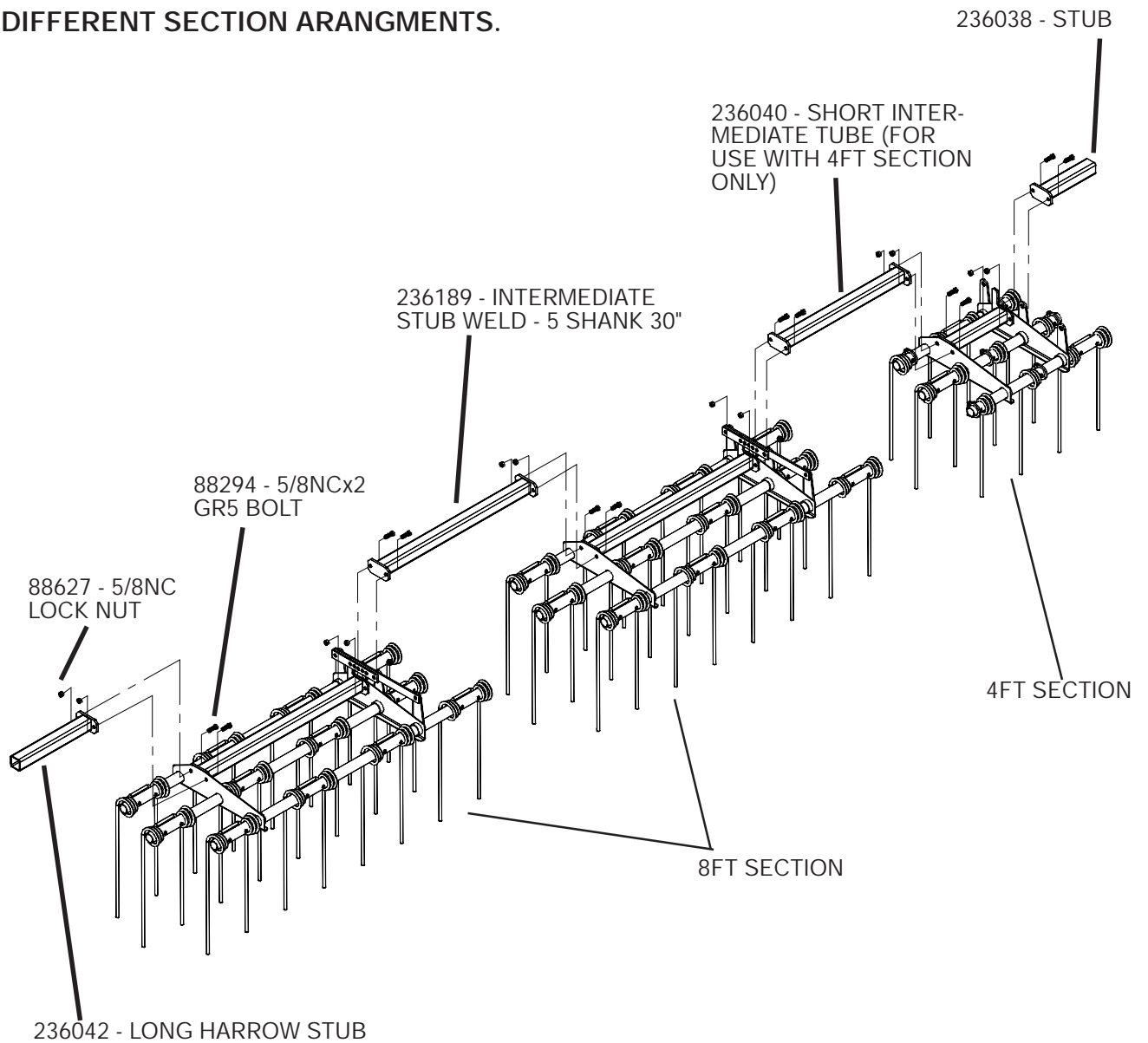
HARROW SECTION ASSEMBLY



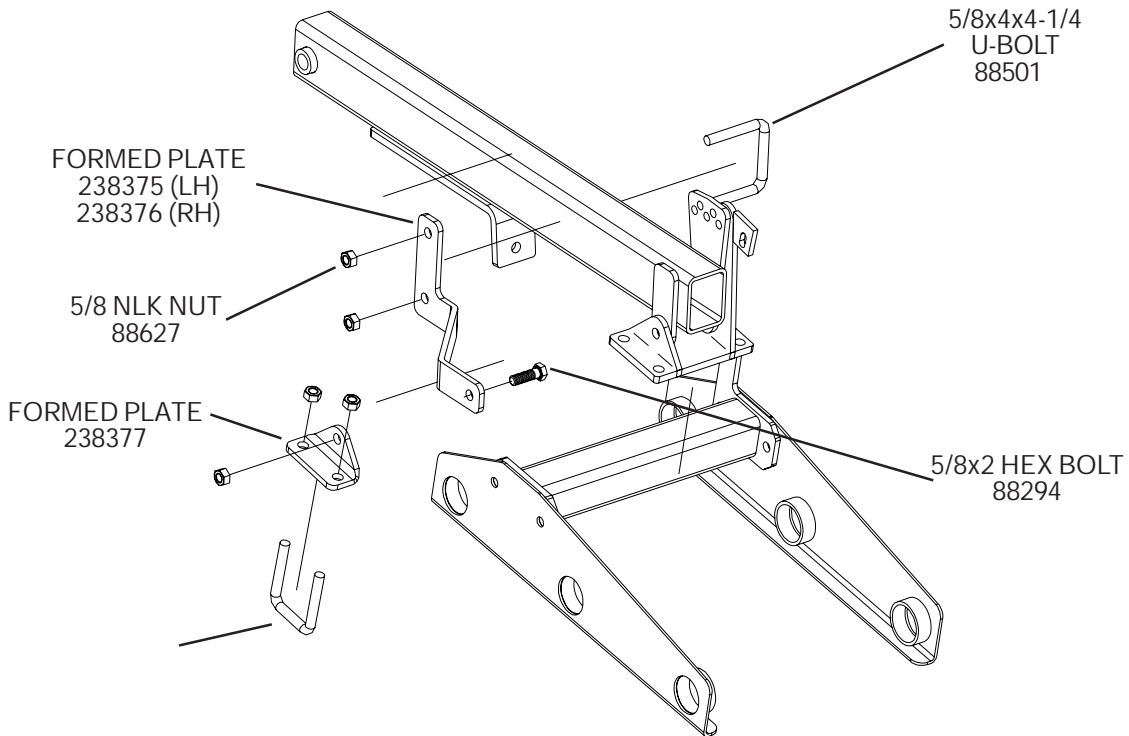
ITEM	PART NO.	DESCRIPTION	ITEM	PART NO.	DESCRIPTION
1	88295	5/8NCx6 GR5 BOLT	15	236021	QTY 3/ 4FT SEC. R SINGLE HARROW TOOTH
2	22521	SPACER TUBE	16	236020	QTY 3/ 4FT SEC. L SINGLE HARROW TOOTH
3	88277	5/8 FLAT WASHER	17	236087	SHORT H.D. HARROW TOOTH
4	222562	BUSHING			QTY - 12/ 8FT SEC
5	222570	ADJUST BAR			9/ 6FT SEC
6	88627	5/8NC LOCK NUT			3/ 4FT SEC
7	222575	INNER ADJUST BAR	18	222573	8FT CENTER HARROW TUBE
8	23039	HAIR PIN		222568	6FT CENTER HARROW TUBE
9	32871	5/8x1-3/8 BENT PIN		236026	4FT CENTER HARROW TUBE
10	222574	8FT REAR HARROW TUBE	19	222572	8FT FRONT HARROW TUBE
	222569	6FT REAR HARROW TUBE		222567	6FT FRONT HARROW TUBE
	236027	4FT REAR HARROW TUBE		236024	4FT FRONT HARROW TUBE
11	88298	5/8NCx4 GR5 BOLT	20	88409	5/8NCx2-1/2 GR5 BOLT
		QTY - 24-8FT			
		18-6FT			
		12-4FT			
12	200479	BUSHING			
13	88845	5/8NC LOCK NUT			
14	236195	8FT HARROW MOUNT WELD			
	236198	6FT HARROW MOUNT WELD			
	236028	4FT HARROW MOUNT WELD			

INTERMEDIATE TUBE ASSEMBLY

NOTE: THIS IS FOR GENERAL ASSEMBLY INSTRUCTIONS. HARROWS CAN HAVE DIFFERENT SECTION ARANGMENTS.



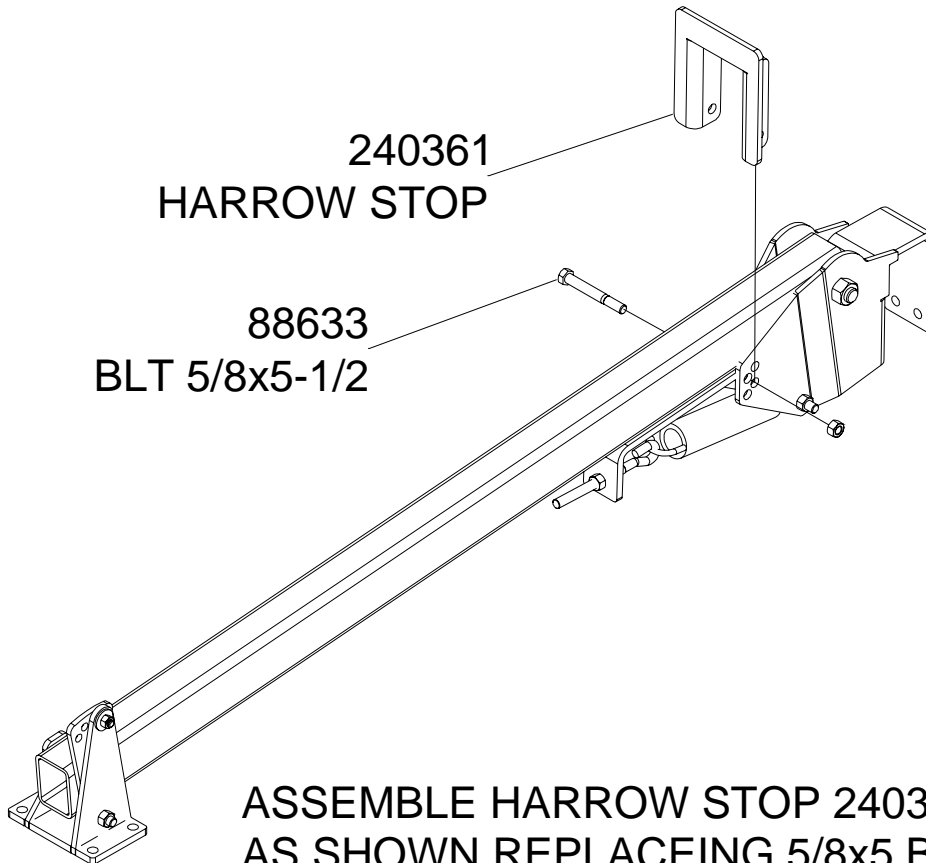
SINGLE HARROW ARM SUPPORT ASSEMBLY



700158

THIS KIT IS DESIGNED TO BE USED ON HARROW SECTION THAT ARE SUPPORTED WITH ONE ARM. USUALLY THEY ARE 4FT SECTION ON OUTER WINGS OF MACHINES

HARROW STOP ARM ASSEMBLY



ASSEMBLE HARROW STOP 240361
AS SHOWN REPLACEING 5/8x5 BOLT
WITH BOLT SUPPLIED. THIS SHOULD BE
DONE ON OUTER WINGS TO PREVENT
HARROW DAMAGE.

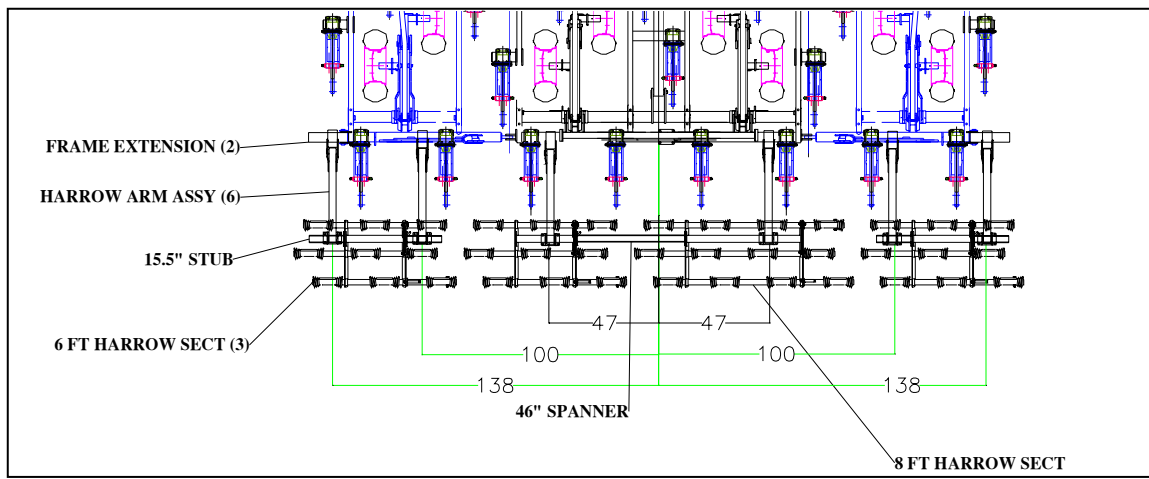
CHISEL PLOW HARROW MOUNTING CHART

x		x
x	x	x

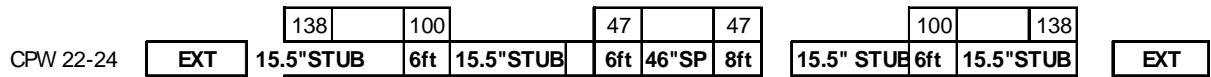
APPROX ARM LOCATION (IN FROM CENTER)
SECTION, STUBS, SPANNERS & EXT

CHISEL MODEL	OUTER WINGS	WINGS	MAIN FRAME	WINGS	OUTER WINGS
CPR 10			29 6ft 46"SP 6ft 47 47		
CPR 10-12			6ft 46"SP 8ft 47 47		
CPR 10-14			8ft 46"SP 8ft		
CPR 18		96 4ft 109	29 6ft 46"SP 6ft 47 47	96 4ft 109	
CPW 18-20		4ft	6ft 46"SP 8ft	4ft	
CPW 22	EXT	138 22.5"STUB 6ft 100 138	29 6ft 46"SP 6ft 47 47	100 6ft 22.5"STUB 138	EXT
CPW 22-24	EXT	15.5"STUB 6ft 100 138	15.5"STUB 6ft 46"SP 8ft 29 6ft 46"SP 6ft	15.5" STUB 6ft 15.5"STUB 100 139	EXT
CPW 22-26	EXT	8ft 123 89	6ft 46"SP 6ft 37 8 45 6ft 46"SP 8ft	8ft 89 123	EXT
CPW 28		8ft	6ft 46"SP 8ft	8ft	
CPW 28-30		136 4ft 39"SP 6ft 15.5"STUB 100	47 8 47 6ft 46"SP 6ft	15.5"STUB 6ft 39"SP 4ft 100 148	
CPW 25		148 22.5 STUB 6ft 124	47 8 45 6ft 46"SP 8ft	6ft 22.5 STUB 124 156	
CPW 25-27	EXT	156 15.5 STUB 6ft 119	65 8 57 8ft 46"SP 8ft	6ft 15.5 STUB 119 162	EXT
CPW 25-29	EXT	162 15.5 STUB 8ft 127	37 8 45 6ft 46"SP 8ft	8ft 15.5 STUB 127 163	EXT
CPW 31		163 8ft 89	65 8 57 8ft 46"SP 8ft	8ft 89 165	
CPW 31-33		165 4ft 39"SP 6ft 15.5"STUB 129	55 8 47 6ft 46"SP 8ft	15.5"STUB 6ft 39"SP 4ft 129 192	
CPW 31-35	EXT	192 6ft 39"SP 4ft	65 8 57 8ft 46"SP 8ft	6ft 39"SP 6ft 129 192	EXT
CPW 31-35	EXT	192 6ft 39"SP 4ft	65 8 57 8ft 46"SP 8ft	4ft 39"SP 6ft 115 165	EXT
CPW 31-37	203	165 15.5"STUB 8ft 115	55 8 47 6ft 46"SP 8ft	115 8ft 15.5"STUB 165	203
CPW 31-39	4ft	164 15.5"STUB 8ft 128	65 8 57 8ft 46"SP 8ft	8ft 15.5"STUB 128 164	4ft
CPW 31-39	4ft	8ft	8ft 46"SP 8ft	8ft	4ft
CPW 37		195 150 115 6ft 46"SP 6ft	55 8 47 6ft 46"SP 8ft	115 150 195 6ft 46"SP 6ft	
CPW 37-39		207 157 128 6ft 46"SP 6ft	65 8 57 8ft 46"SP 8ft	128 157 207 6ft 46"SP 6ft	
CPW 37-41		207 150 115 8ft 46"SP 6ft	55 8 47 6ft 46"SP 8ft	115 150 207 6ft 46"SP 8ft	
CPW 37-43	241	186 150 115 4ft 39"SP 6ft	65 8 57 8ft 46"SP 8ft	115 150 186 6ft 39"SP 4ft	241
CPW 37-43	4ft	4ft 39"SP 6ft	8ft 46"SP 8ft	6ft 39"SP 4ft	4ft
CPW 37-45	246	195 157 115 6ft 46"SP 6ft	55 8 47 6ft 46"SP 8ft	115 157 195 6ft 46"SP 8ft	246
CPW 37-45	4ft	6ft 46"SP 6ft	6ft 46"SP 8ft	6ft 46"SP 8ft	4ft

EXAMPLE FOR HARROW ASSEMBLY



EXAMPLE CPW 22-24

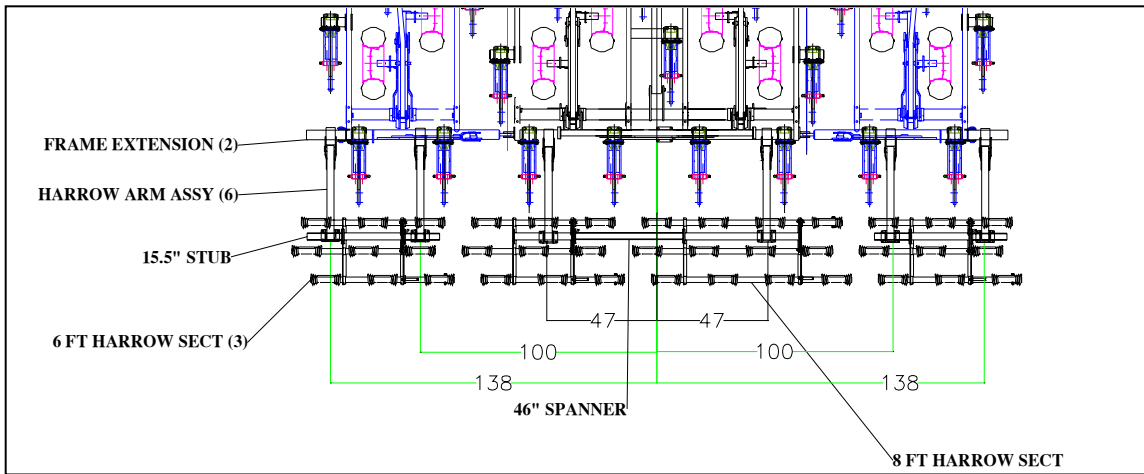


800NT SERIES WISHEK DISK HARROW MOUNTING CHART

x		x	APPROX ARM LOCATION (IN FROM CENTER) SECTION, STUBS, SPANNERS & EXT
x	x	x	

DISK MODEL	FRAME EXTENSIONS	WINGS	MAIN FRAME			WINGS	FRAME EXTENSION	
14 disk	EXT		8ft	46"SP	8ft		EXT	
			52		52			
16 disk	EXT		6ft	46"SP	6ft	46"SP	6ft	EXT
			52	8	52			
18 disk	EXT		6ft	46"SP	8ft	46"SP	6ft	EXT
			72	22	22	72		
22 disk		8ft		8ft		8ft		
		110		22	22	92	110	
24 disk	EXT	8ft	6ft	38"SP	4ft	8ft	EXT	
		134		27	27	99	134	
26 disk	EXT	8ft	6ft	46"SP	6ft	8ft	EXT	
		134		27	27	100	134	
30 disk	EXT	8ft 15.5 STUB	8ft	46"SP	8ft	15.5 STUB 8ft	EXT	
		134		27	27	100	134	
34 LNT disk		78in Mnt tube	100in Mnt tube			78in Mnt tube		
		6ft 46"SP 6ft	6ft	46"SP	8ft	6ft 46"SP 6ft		
		178 143 110	45	2	45	110 143 178		
38 LNT disk		78in Mnt tube	100in Mnt tube			78in Mnt tube		
		8ft 46"SP 6ft	6ft	46"SP	8ft	6ft 46"SP 8ft		
		178 143 110	45	2	45	110 143 178		

EXAMPLE FOR HARROW ASSEMBLY



EXAMPLE CPW 22-24

